



AD-236

Parts Manual

24 VAC Phase 5

American Dryer Corporation
88 Currant Road
Fall River MA 02720-4781 USA
Telephone: +1 (508) 678-9000 / Fax: +1 (508) 678-9447
e-mail: techsupport@amdry.com

www.adclaundry.com

Retain This Manual In A Safe Place For Future Reference

American Dryer Corporation products embody advanced concepts in engineering, design, and safety. If this product is properly maintained, it will provide many years of safe, efficient, and trouble free operation.

ONLY qualified technicians should service this equipment.

OBSERVE ALL SAFETY PRECAUTIONS displayed on the equipment or specified in the installation manual included with the dryer.

The following “**FOR YOUR SAFETY**” caution must be posted near the dryer in a prominent location.

FOR YOUR SAFETY

Do not store or use gasoline or other flammable vapors and liquids in the vicinity of this or any other appliance.

POUR VOTRE SÉCURITÉ

Ne pas entreposer ni utiliser d'essence ni d'autres vapeurs ou liquides inflammables à proximité de cet appareil ou de tout autre appareil.

We have tried to make this manual as complete as possible and hope you will find it useful. ADC reserves the right to make changes from time to time, without notice or obligation, in prices, specifications, colors, and material, and to change or discontinue models.

Important

For your convenience, log the following information:

DATE OF PURCHASE _____ MODEL NO. **AD-236**
RESELLER'S NAME _____
Serial Number(s) _____

Replacement parts can be obtained from your reseller or the ADC factory. When ordering replacement parts from the factory, you can FAX your order to ADC at (508) 678-9447 or telephone your order directly to the ADC Parts Department at (508) 678-9000. Please specify the dryer model number and serial number in addition to the description and part number, so that your order is processed accurately and promptly.

The illustrations on the following pages may not depict your particular dryer exactly. The illustrations are a composite of the various dryer models. Be sure to check the descriptions of the parts thoroughly before ordering.

“IMPORTANT NOTE TO PURCHASER”

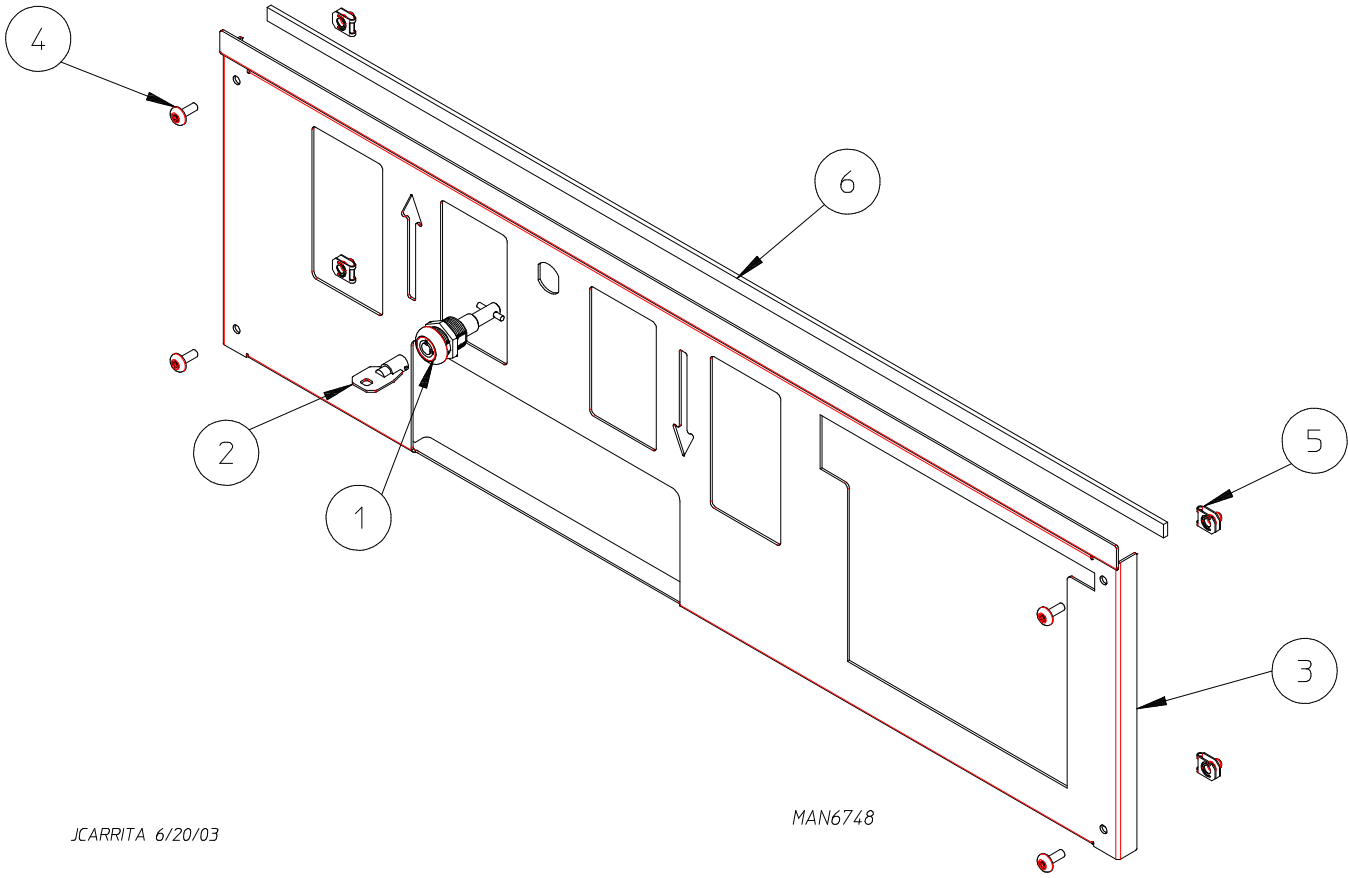
Information must be obtained from your local gas supplier on the instructions to be followed if the user smells gas. These instructions must be posted in a prominent location near the dryer.

Table of Contents

Coin Control Door Assembly for Models Mfd. as of May 30, 2003	4
Locking Control Door Assembly for Models Mfd. prior to May 30, 2003	5
Coin Microprocessor Control Panel / Box Assemblies	6
Upper Front Panel Assembly (For Plastic Door)	8
Upper Front Panel Assembly (For Cold Rolled Steel Door)	9
Lower Front Panel Assembly (For Plastic Door)	10
Lower Front Panel Assembly (For Cold Rolled Steel Door)	11
Plastic Main Door Assembly	12
Main Door "Steel" Assembly	13
Main Door Switch Assembly (For Plastic Door)	14
Main Door Switch Assembly (For Cold Rolled Steel Type Door)	15
Tumbler / Support Assembly	16
Lint Drawer Assembly	17
Lint Drawer Switch Assembly	18
Upper Pocket Sensor Bracket Assembly	19
Lower Pocket Sensor Bracket Assembly	20
Idler Bearing Assembly	21
Tumbler Bearing Assembly	22
T.E.F.C. Motor Mount Assembly	24
Direct Spark Ignition Gas Valve / Burner Assembly	26
Gas Piping Assembly	28
Gas Burner Assembly	29
Sail Switch Assembly	30
Single-Phase (1 \emptyset) Motor, Electrical Relay Panel Assembly	31
3-Phase (3 \emptyset) Motor, Electrical Relay Panel Assembly	32
Back Guard Assembly	33
Exhaust Ducting Assembly	34
Additional Parts Available	35

Coin Control Door Assembly

For Models Mfd. as of May 30, 2003



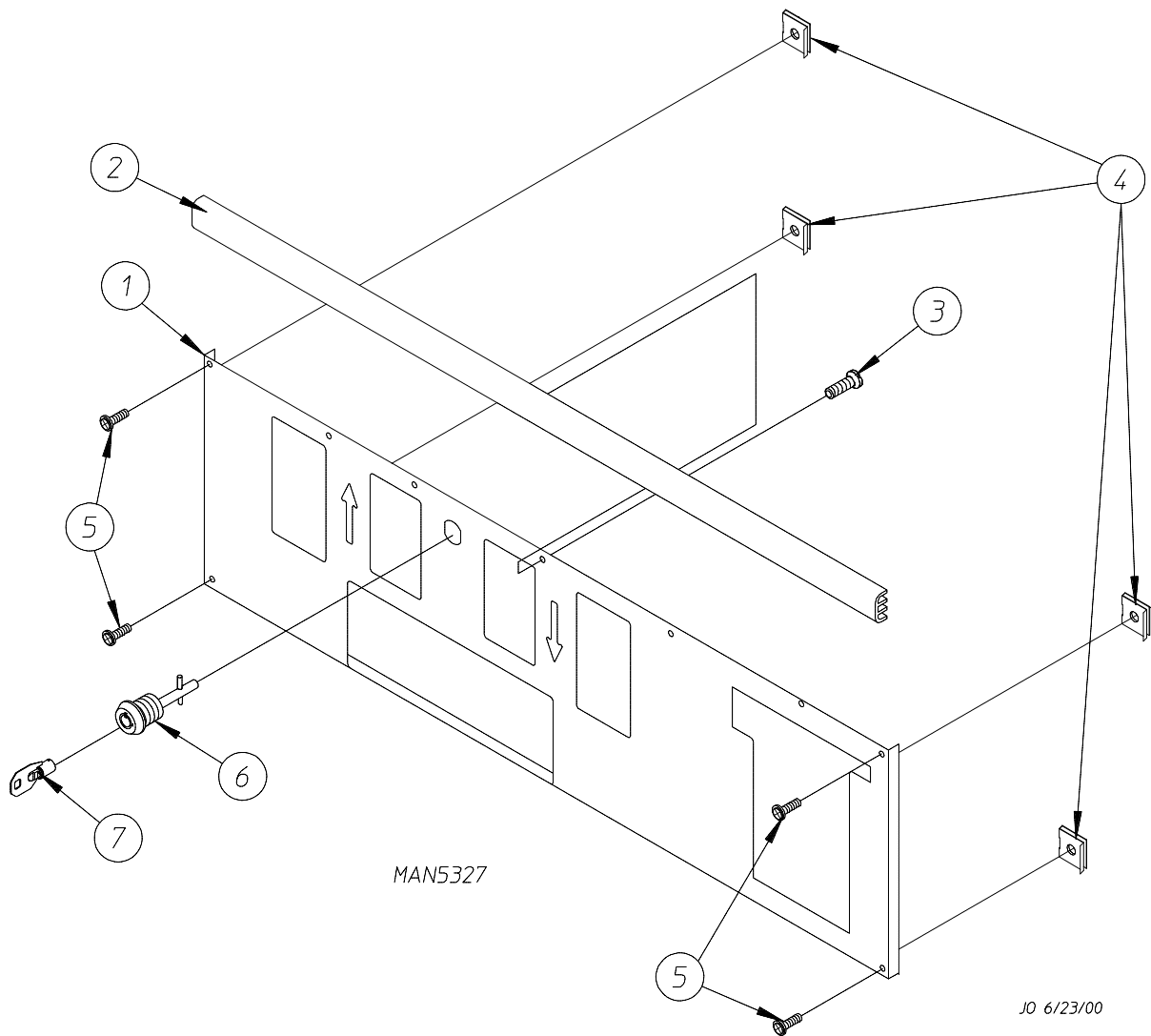
JCARRITA 6/20/03

MAN6748

<u>Illus. No.</u>	<u>Part No.</u>	<u>Qty.</u>	<u>Description</u>
1	160040	1	ACE® Control Door Lock
2	160140	1	ACE® Key XX4451
3	883896	1	White Locking Control Door Complete (includes illus. nos. 1 through 3 and 6)
	883897	1	Ivory Locking Control Door Complete (includes illus. nos. 1 through 3 and 6)
	883898	1	Blue Locking Control Door Complete (includes illus. nos. 1 through 3 and 6)
4	150314	4	#10-32 x 1/2" TORX Plus® Screw
5	154011	4	#10-32 Multi-Thread U-Nut
6	117604	3	Noise Suppression Tape

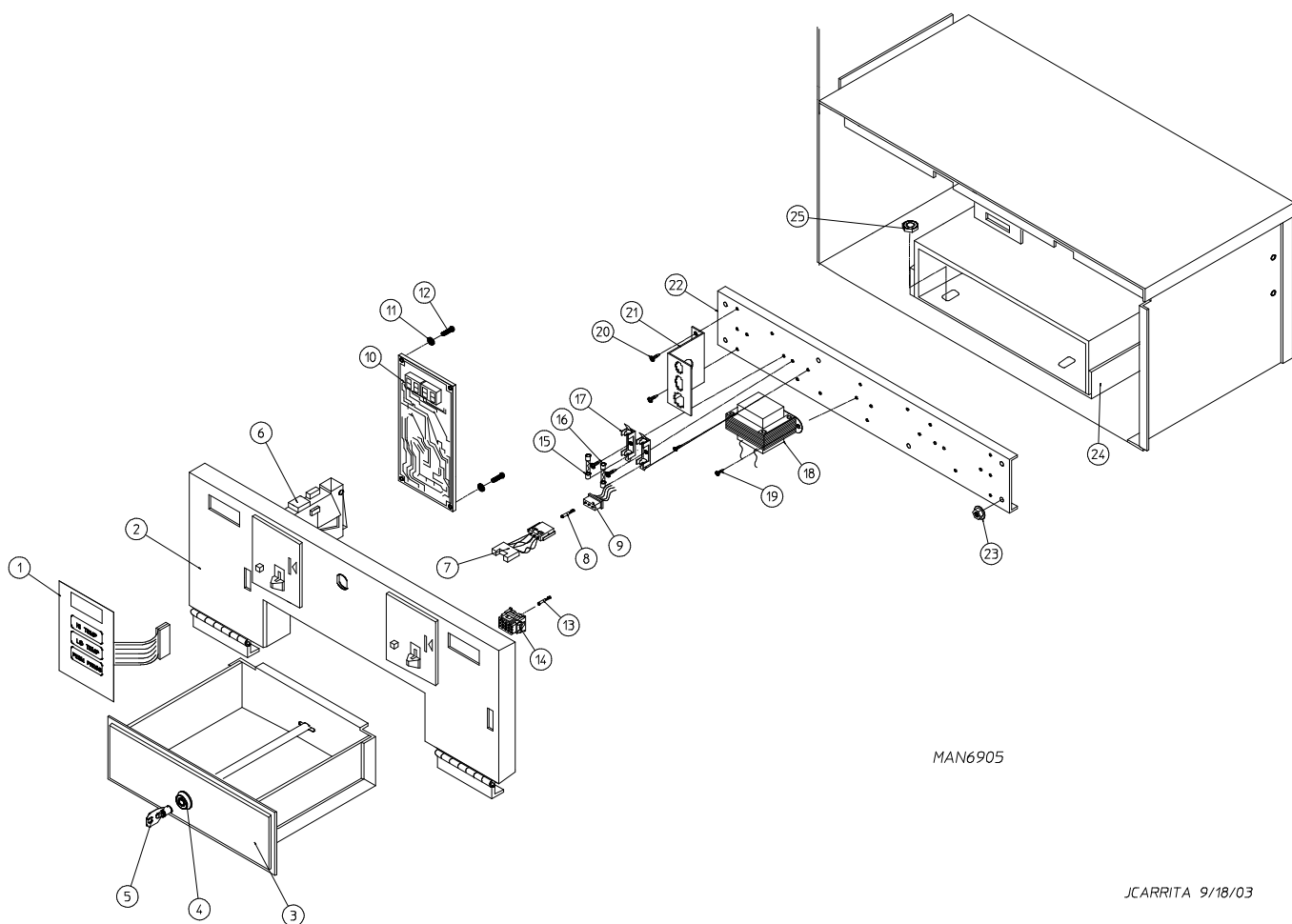
Locking Control Door Assembly

For Models Mfd. prior to May 30, 2003



<u>Illus. No.</u>	<u>Part No.</u>	<u>Qty.</u>	<u>Description</u>
1	882691	1	White Locking Control Door Complete (includes illus. nos. 1 through 3)
	883466	1	Ivory Locking Control Door Complete (includes illus. nos. 1 through 3)
	882692	1	Almond Locking Control Door Complete (includes illus. nos. 1 through 3)
	882693	1	Blue Locking Control Door Complete (includes illus. nos. 1 through 3)
2	180516	1	Black Trim
3	150201	5	#10-32 x 1/4" Phillips Pan Head Screw
4	154011	4	#10-32 Multi-Thread U-Nut (for models mfd. as of January 4, 2001)
	154009	4	Tinnerman Clips (for models mfd. prior to January 4, 2001)
5	150217	4	#10-32 x 3/4" Phillips Pan Head Machine Screw
6	160040	1	ACE® Control Door Lock
7	160140	1	ACE® Key XX4451

Coin Microprocessor Control Panel / Box Assemblies



NOTE: Duplicate all components for right-hand side of control box.

Coin Microprocessor Control Panel / Box Assemblies

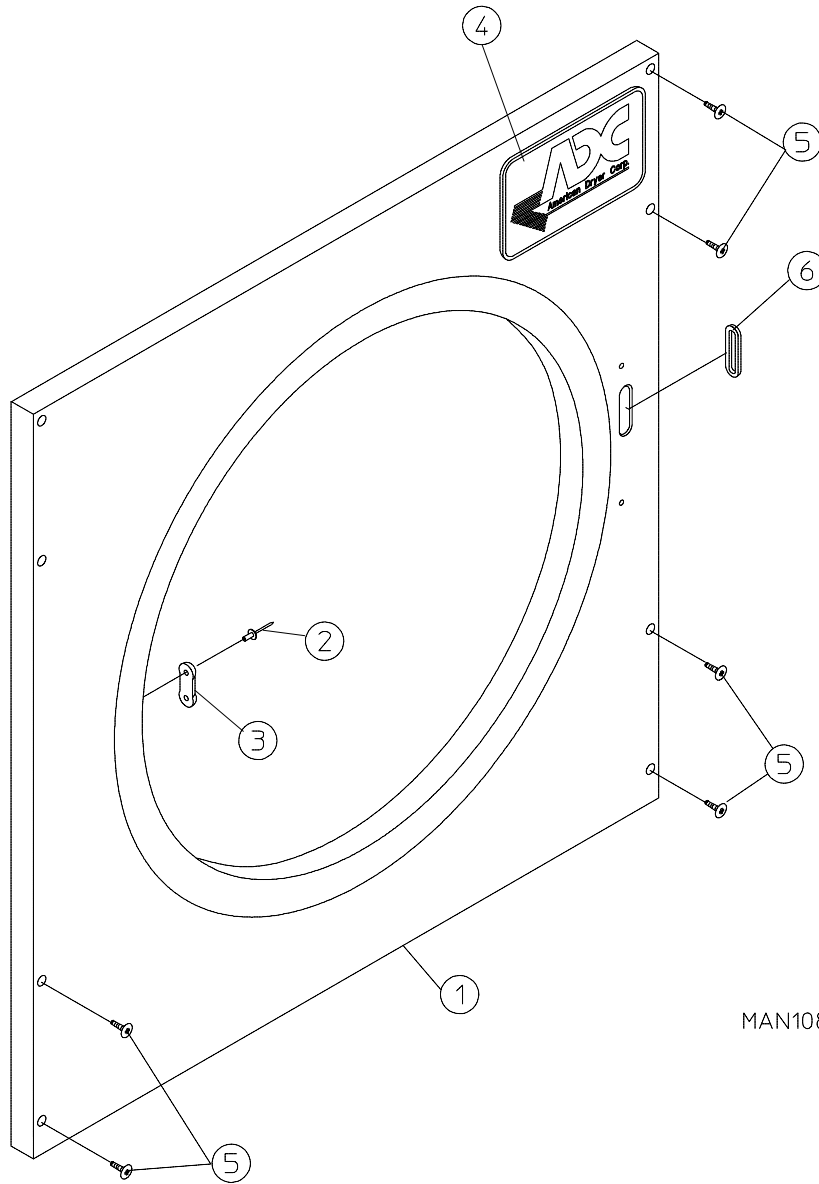
<u>Illus. No.</u>	<u>Part No.</u>	<u>Qty.</u>	<u>Description</u>
1	112526	1	Coin Keypad Label Assembly
2	882694	1	Control Panel Assembly Less Acceptor (includes illus. nos. 1, 2, and 10 through 12)
3	882695	1	White Coin Box
	883467	1	Ivory Coin Box
	882696	1	Almond Coin Box
	882697	1	Blue Coin Box
4	160042	1	ACE® Standard Coin Box Lock Assembly with Key
5	160136*	1	Key (for standard coin box lock)
6	881163	1	Microprocessor Single Coin Acceptor with Optical Switch
7	881143	1	Optical Switch
8	137021**	3	Microprocessor Socket
9	137023**	1	Optical Switch Connector
	880772	1	Single Coin Optic Switch Harness
	824080	1	Dual Coin Optic Switch Harness
	137213	1	Phase 5 Coin Controller
10	824998	1	Phase 5 Battery Clip
	153010	2	#6 Star Washer
12	150005	2	#6-32 x 1/4" Phillips Round Head Machine Screw
13	122706	15	Microprocessor Socket
14	122641	1	15-Pin Microprocessor Connector
	122800	1	Microprocessor (female) Pin Extraction Tool
15	136057	1 or 2	1/2-Amp (Slo-Blo) Fuse
16	150002	1 or 2	#6-32 x 1" Round Head Machine Screw
17	136008	1 or 2	Fuse Block
18	141403	1	24 Volt Transformer
19	150301	2	#8-18 x 7/16" Phillips Pan Head TEK Screw
20	150301	2	#8-18 x 7/16" Phillips Pan Head TEK Screw
21	353258	1	Plug Retainer Bracket
22	826343	1	Control Box Panel Assembly Complete (115 volt) (includes illus. nos. 15 through 22)
	826342	1	Control Box Panel Assembly Complete (208-240 volt) (includes illus. nos. 15 through 22)
23	151001	6	#8-32 Pal Nut
24	882699	1	White Coin Vault
	882700	1	Almond Coin Vault
	883899	1	Ivory Coin Vault
	882701	1	Blue Coin Vault
25	152014	4	1/4-20 Hex Flange Nut

* Specify key number when ordering.

** For dual coin, double the quantity.

IMPORTANT: Check label on computer chip to verify correct part number for controller (computer).

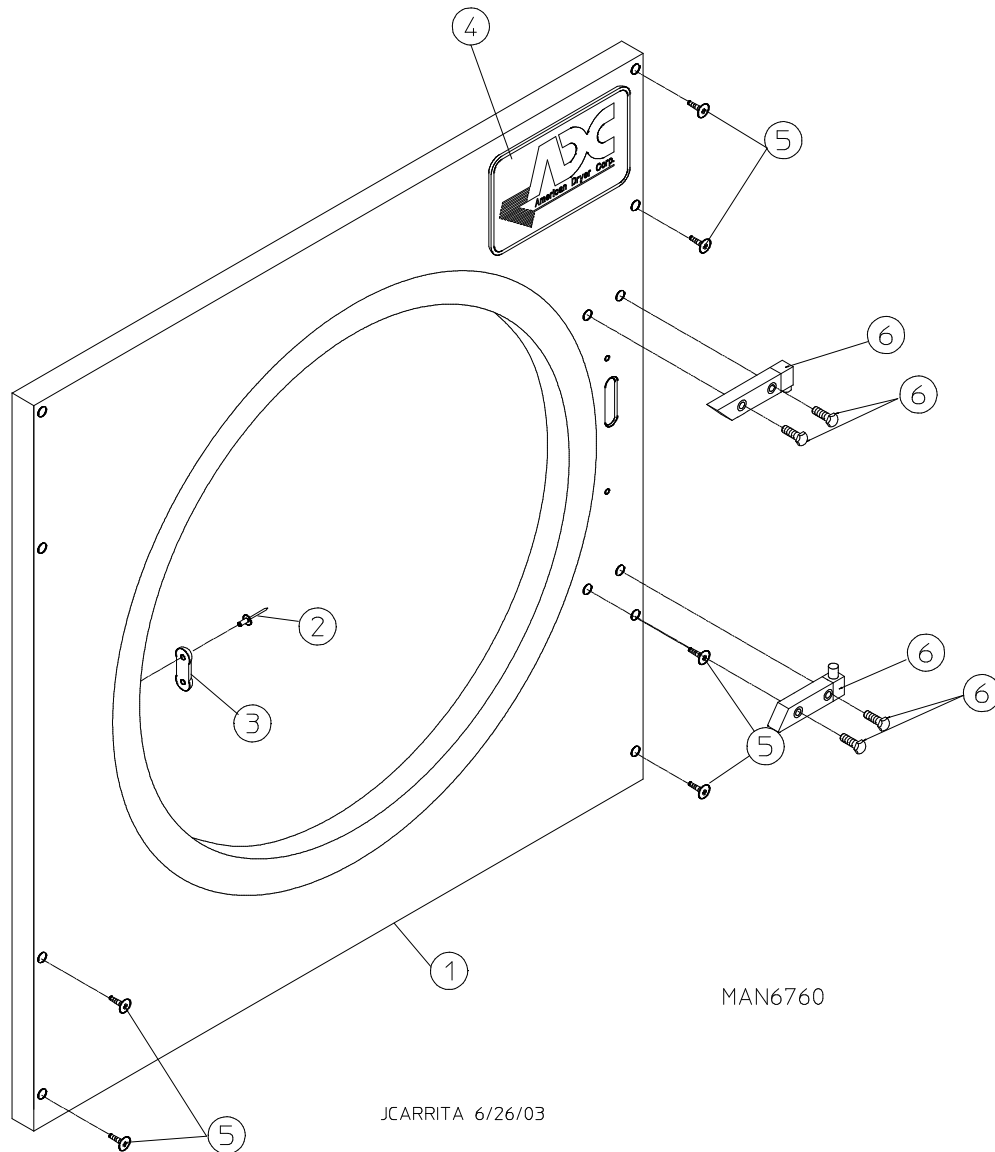
Upper Front Panel Assembly (For Plastic Door)



MAN1084

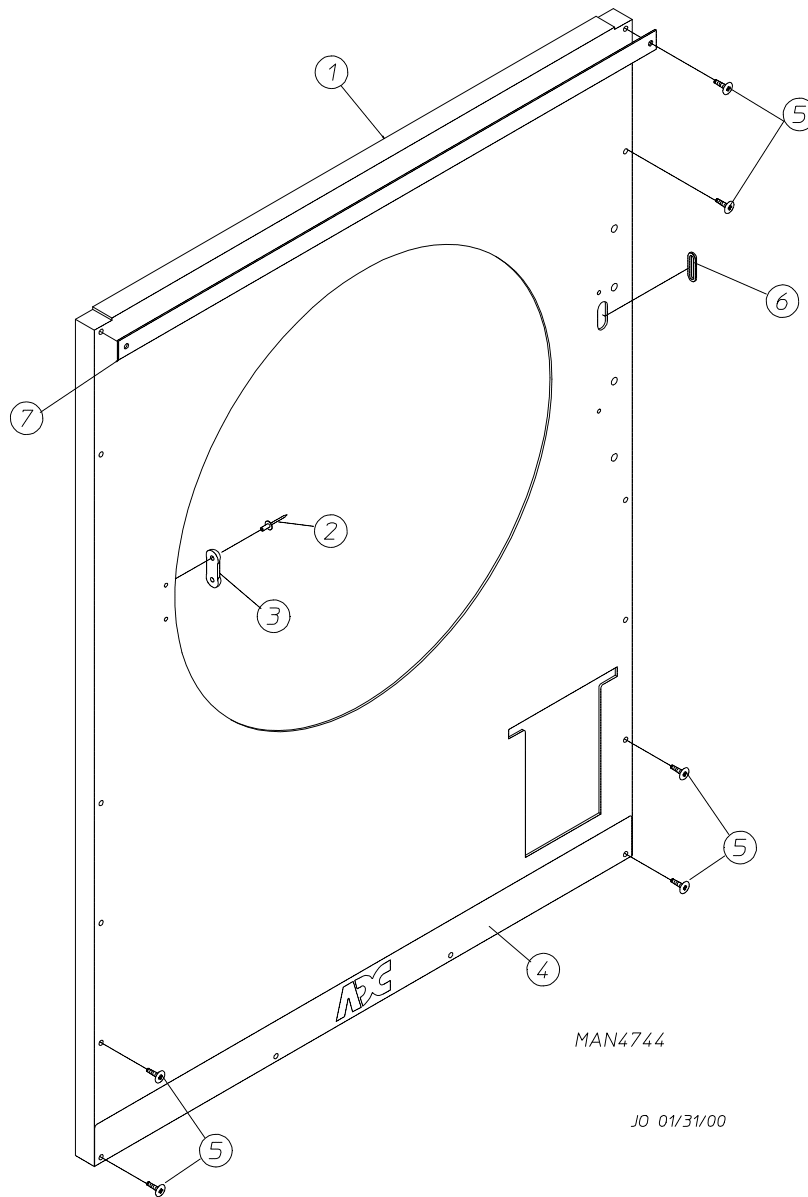
<u>Illus. No.</u>	<u>Part No.</u>	<u>Qty.</u>	<u>Description</u>
1	882705	1	White Upper Front Panel Assembly (includes illus. nos. 1 through 3 and 6)
	882706	1	Almond Upper Front Panel Assembly (includes illus. nos. 1 through 3 and 6)
	882707	1	Blue Upper Front Panel Assembly (includes illus. nos. 1 through 3 and 6)
	883469	1	Ivory Upper Front Panel Assembly (includes illus. nos. 1 through 3 and 6)
2	154215	2	1/4" Pop Rivet
3	170330	1	Friction Door Latch
4	112301	1	ADC Logo ONLY
	870011	1	Logo Double Tape Kit
5	150309	8	#10-16 x 1/2" Hex Head TEK Crimptite Screw
	150313	8	#10-16 x 1/2" TORX Plus® Screw (for models mfd. as of October 2, 2000)
6	121405	1	Rubber Grommet

Upper Front Panel Assembly (For Cold Rolled Steel Door)



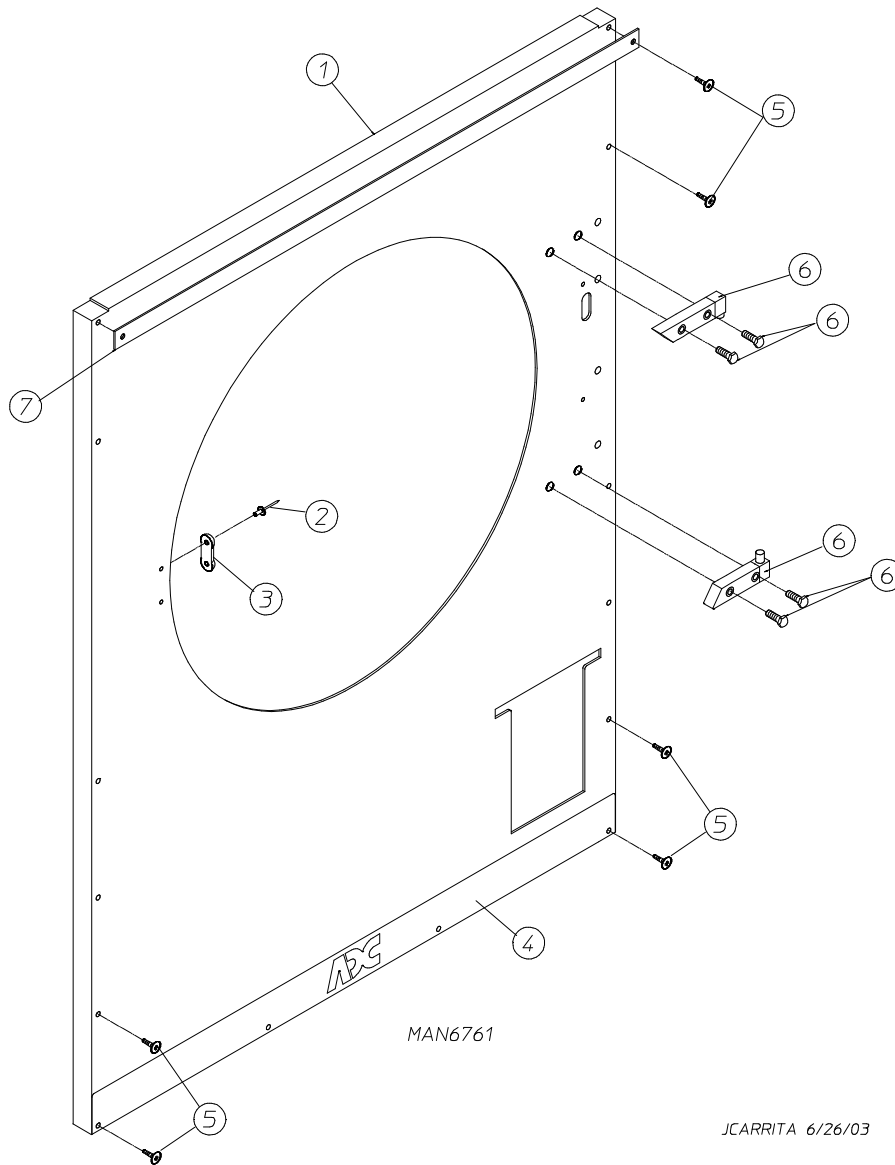
Illus. No.	Part No.	Qty.	Description
1	883260	1	White Upper Front Panel Assembly (includes illus. nos. 1 through 3)
	883262	1	Almond Upper Front Panel Assembly (includes illus. nos. 1 through 3)
	883261	1	Blue Upper Front Panel Assembly (includes illus. nos. 1 through 3)
	883468	1	Ivory Upper Front Panel Assembly (includes illus. nos. 1 through 3)
2	154215	2	1/4" Pop Rivet
3	170330	1	Friction Door Latch
4	112301	1	ADC Logo ONLY
	870011	1	Logo Double Tape Kit
5	150309	8	#10-16 x 1/2" Hex Head TEK Crimptite Screw
	150313	8	#10-16 x 1/2" TORX Plus® Screw (for models mfd. as of October 2, 2000)
6	—	—	Main Door Hinge (refer to Main Door "Steel" Assembly on page 13)

Lower Front Panel Assembly (For Plastic Door)



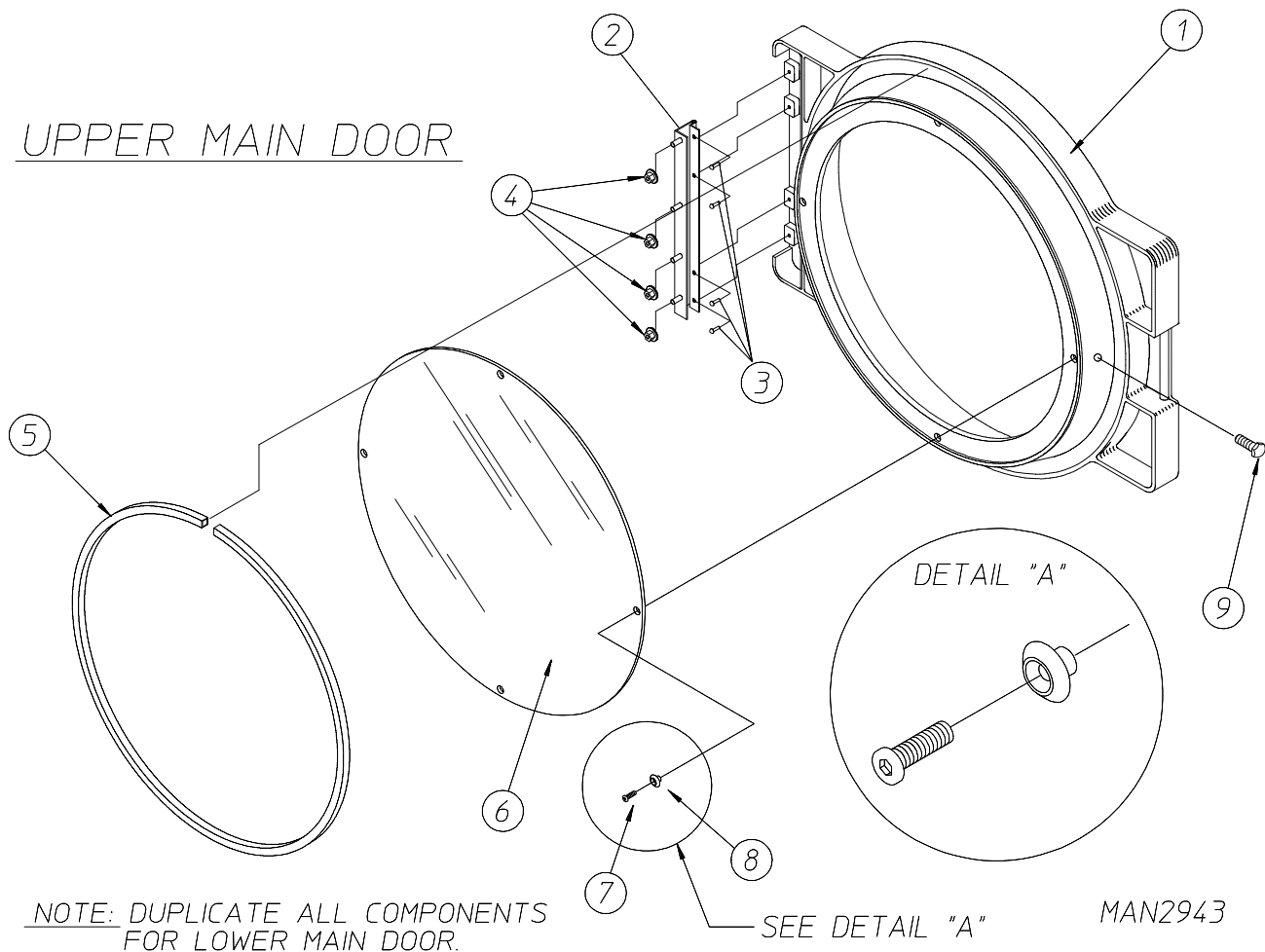
<u>Illus. No.</u>	<u>Part No.</u>	<u>Qty.</u>	<u>Description</u>
1	882702	1	White Lower Front Panel Assembly (includes illus. nos. 1 through 4, 6, and 7)
	882703	1	Almond Lower Front Panel (includes illus. nos. 1 through 4, 6, and 7)
	882704	1	Blue Lower Front Panel (includes illus. nos. 1 through 4, 6, and 7)
	883470	1	Ivory Lower Front Panel (includes illus. nos. 1 through 4, 6, and 7)
2	154215	2	1/4" Pop Rivet
3	170330	1	Friction Door Latch
4	315187	1	Kick Plate Trim
5	150309	14	#10-16 x 1/2" Hex Head TEK Crimptite Screw
	150313	14	#10-16 x 1/2" TORX Plus® Screw (for models mfd. as of October 2, 2000)
6	121405	1	Rubber Grommet
7	882602	1	Black Lower Front Panel Trim

Lower Front Panel Assembly (For Cold Rolled Steel Door)



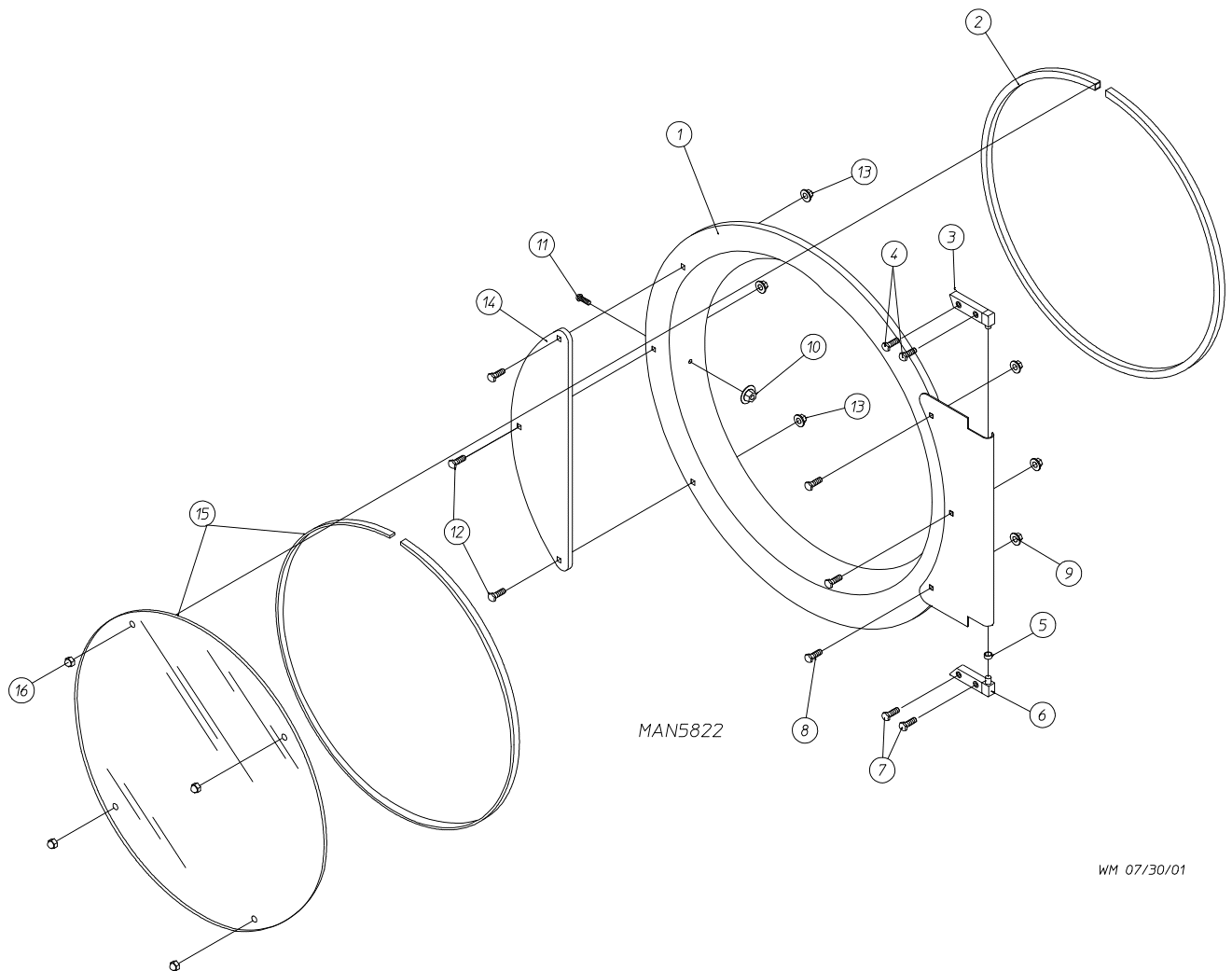
<u>Illus. No.</u>	<u>Part No.</u>	<u>Qty.</u>	<u>Description</u>
1	883479	1	White Lower Front Panel Assembly (includes illus. nos. 1 through 4 and 7)
	883481	1	Almond Lower Front Panel (includes illus. nos. 1 through 4 and 7)
	883480	1	Blue Lower Front Panel (includes illus. nos. 1 through 4 and 7)
	883468	1	Ivory Lower Front Panel (includes illus. nos. 1 through 4 and 7)
2	154215	2	1/4" Pop Rivet
3	170330	1	Friction Door Latch
4	315187	1	Kick Plate Trim
5	150309	14	#10-16 x 1/2" Hex Head TEK Crimptite Screw
	150313	14	#10-16 x 1/2" TORX Plus® Screw (for models mfd. as of October 2, 2000)
6	—	—	Main Door Hinge (refer to Main Door "Steel" Assembly on page 13)
7	882602	1	Black Lower Front Panel Trim

Plastic Main Door Assembly



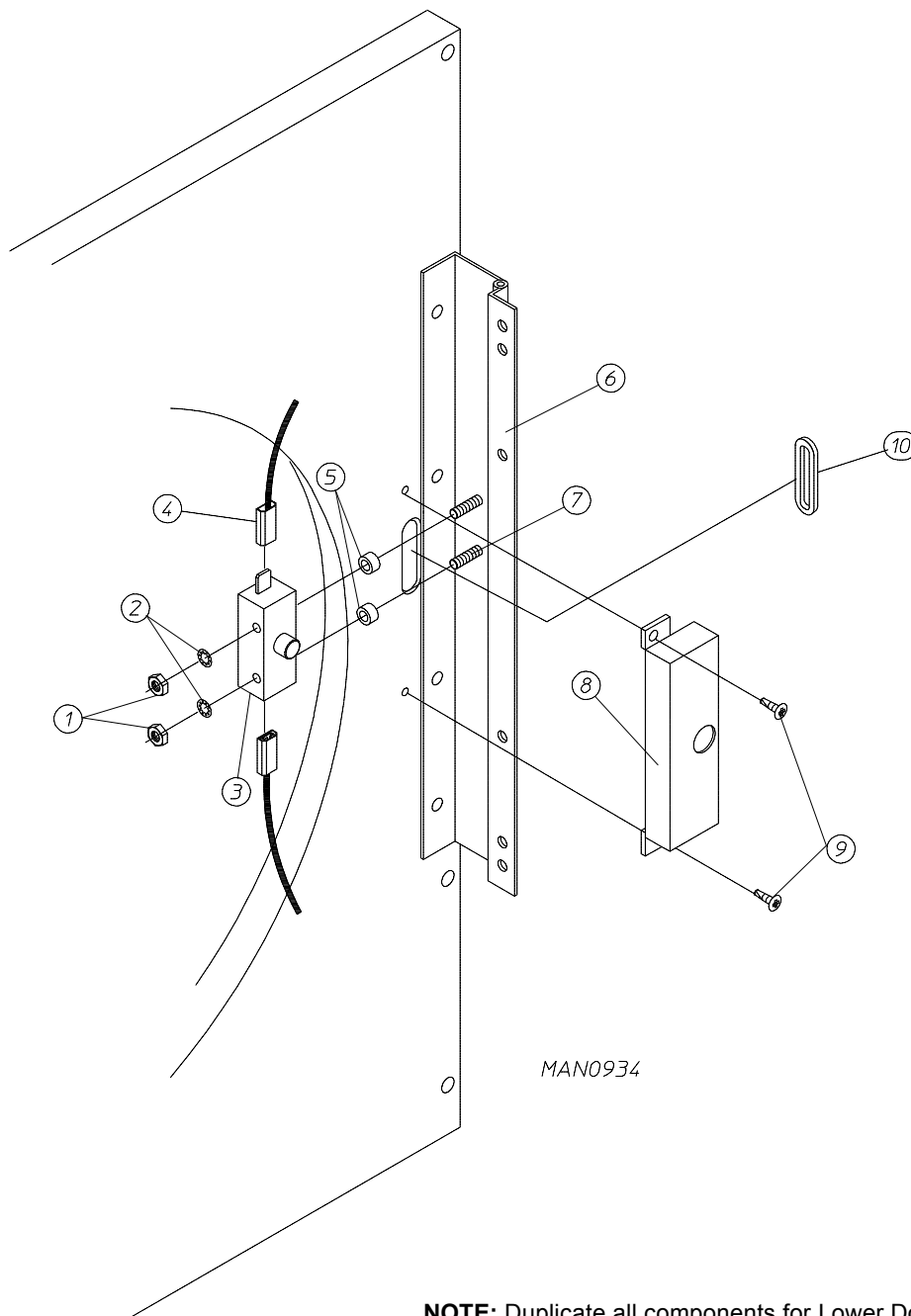
<u>Illus. No.</u>	<u>Part No.</u>	<u>Qty.</u>	<u>Description</u>
1	881422	1	Black Plastic Main Door Assembly Complete with Mechanical Fasteners (includes illus. nos. 1 and 5 through 9)
2	800448	4	12-1/2" Stainless Steel Main Door Hinge Assembly
3	150410	4	#10-24 x 3/8" Phillips Pan Head Taptite Screw
4	152014	1	1/4-20 Free Spin Wash Nut
5	102349	1	Main Door Gasket
6	102212	1	20-7/16" Door Glass with (4) Holes
	170731	1	Main Door Glass Adhesive (10.3 oz. cartridge)
7	150448	4	1/2" Stainless Steel Flat Head Allen Screw
8	170319	4	Door Glass (nylon) Spacer
9	150431	1	Main Door Latch Screw (#10 x 7/16" dome hex head)

Main Door "Steel" Assembly



<u>Illus. No.</u>	<u>Part No.</u>	<u>Qty.</u>	<u>Description</u>
1	881150	1	Black Main Door Assembly Complete (includes illus. nos. 1, 2, and 8 through 15)
2	102354	1	Door Gasket
	170731	1	Black Gasket Adhesive (10.3 oz. cartridge)
3	881152	1	Black Top Hinge Block Assembly (includes illus. nos. 3 and 4)
4	150445	2	1/4-20 x 3/4" Black Cap Head Setscrew
5	153031	1	1/4" Nylon Washer
6	881151	1	Black Bottom Hinge Block Assembly (includes illus. nos. 5 through 7)
7	150445	2	1/4-20 x 3/4" Black Cap Head Setscrew
8	150683	3	1/4-20 x 5/8" Black Carriage Bolt
9	152014	3	1/4-20 Free Spin Wash Nut
10	151010	1	#10-32 Black Hex Acorn Nut
11	150120	1	Door Latch Screw
12	150683	3	1/4-20 x 5/8" Black Carriage Bolt
13	152014	3	1/4-20 Free Spin Wash Nut
14	881210	1	Black Main Door Handle ONLY
15	102211	1	20-7/16" Door Glass without Holes
	102218	1	20-7/16" Door Glass with Holes (for models with mechanical fasteners)
	170731	1	Black Glass Adhesive (10.3 oz. cartridge)
16	151013	4	#10-32 Black Nylon Acorn Nut (for models with mechanical fasteners)

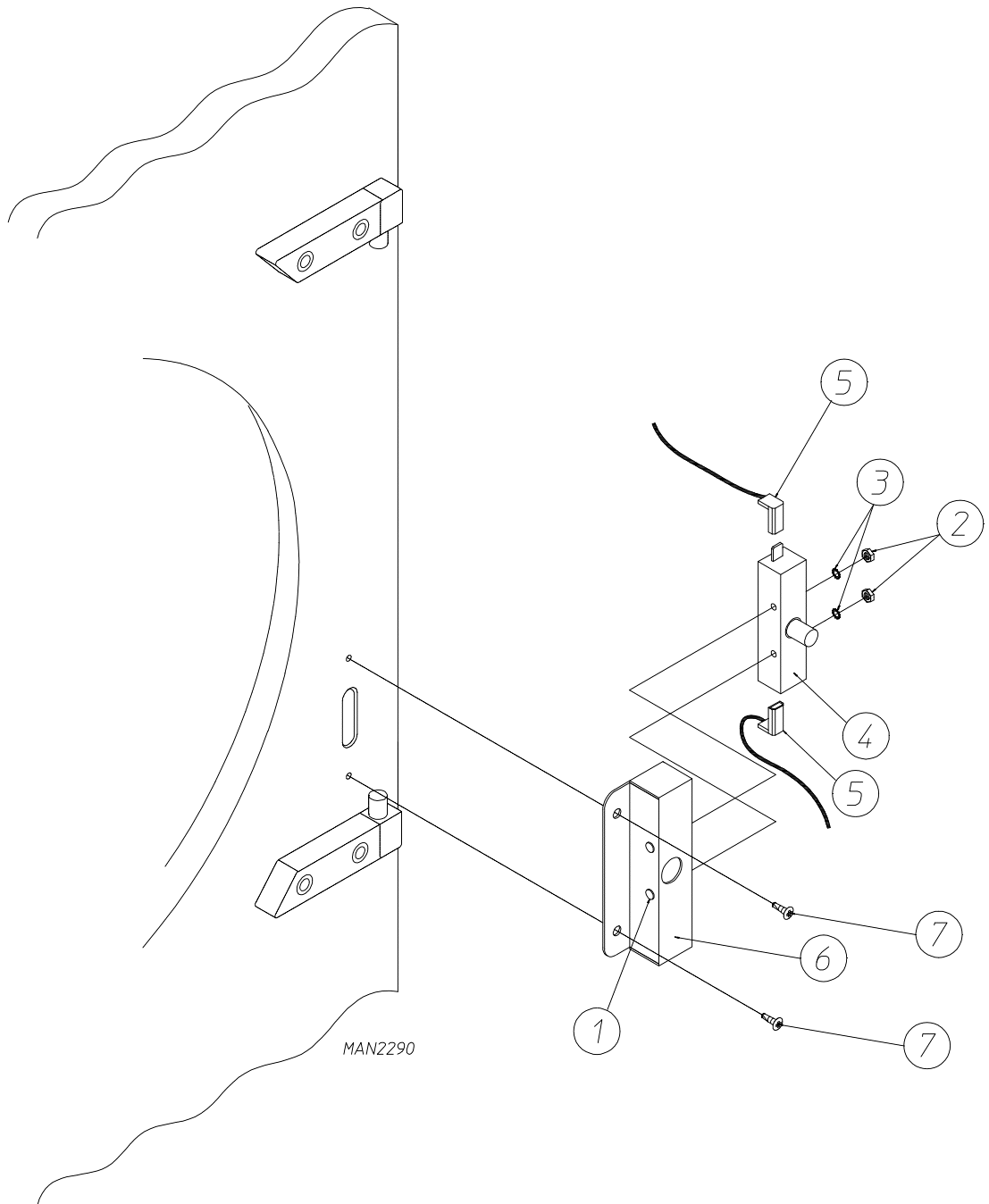
Main Door Switch Assembly (For Plastic Door)



NOTE: Duplicate all components for Lower Door Switch Assembly.

<u>Illus. No.</u>	<u>Part No.</u>	<u>Qty.</u>	<u>Description</u>
1	152013	2	#6-32 Hex Nut
2	153008	2	#6 Lock Washer
3	137005	1	Single-Pole Door Switch
4	121028	2	Insulated Terminal
5	154281	2	3/8" Standard Nylon Spacer
6	800448	1	12-1/2" Stainless Steel Main Door Hinge Assembly (includes illus. nos. 6 and 7)
7	153565	2	#6 Stud
8	881246	1	Main Door Switch Housing
9	150201	2	#10-32 x 1/4" Phillips Pan Head Screw
10	121405	1	Rubber Grommet

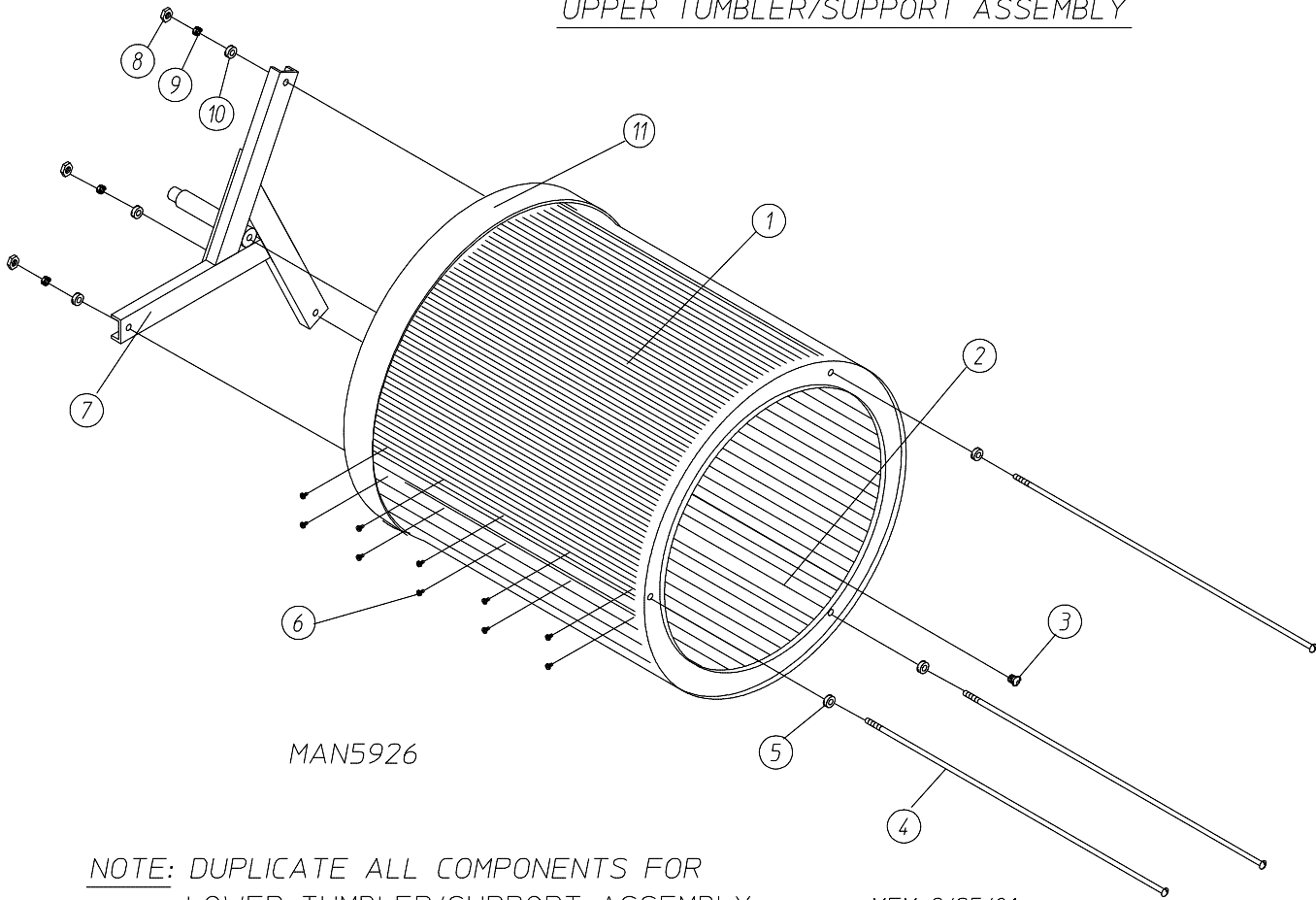
Main Door Switch Assembly (For Cold Rolled Steel Type Door)



<u>Illus. No.</u>	<u>Part No.</u>	<u>Qty.</u>	<u>Description</u>
1	150006	2	#6-32 x 7/8" Phillips Pan Head Machine Screw
2	152013	2	#6-32 Hex Nut
3	153010	2	#6 Star Washer
4	137005	1	Door Switch ONLY
5	122636	2	Flag Terminal
6	881211	1	Black Main Door Switch Housing
	881153	1	Black Main Door Switch Housing Complete (includes illus. nos. 1 through 4 and 6)
7	150301	2	#8-18 x 7/16" Phillips Pan Head TEK Screw

Tumbler / Support Assembly

UPPER TUMBLER/SUPPORT ASSEMBLY



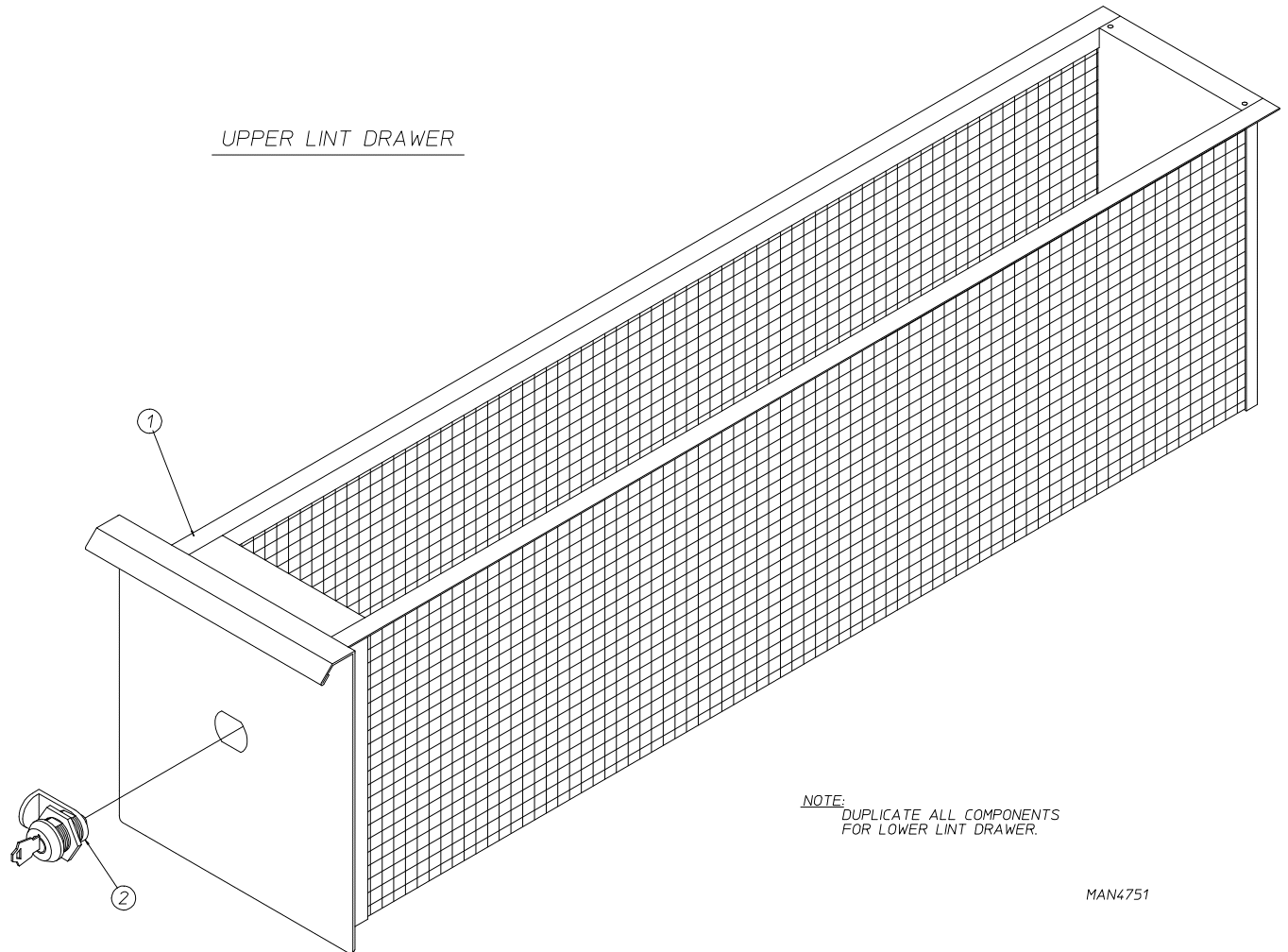
MAN5926

NOTE: DUPLICATE ALL COMPONENTS FOR
LOWER TUMBLER/SUPPORT ASSEMBLY.

MFM 9/25/01

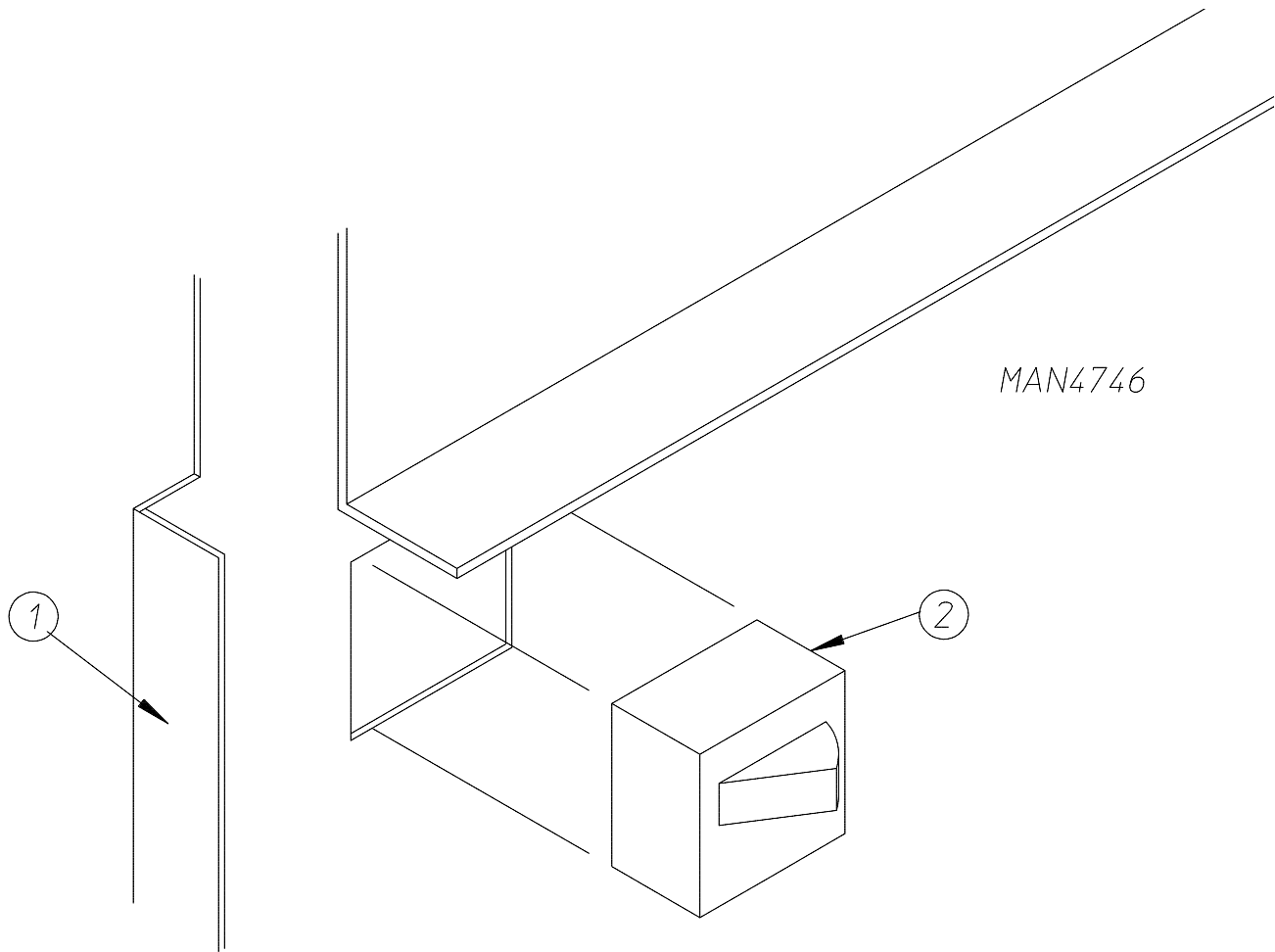
<u>Illus. No.</u>	<u>Part No.</u>	<u>Qty.</u>	<u>Description</u>
1	800831	1	Tumbler and Support Assembly Complete with Felt Collar (includes illus. nos. 1 through 11)
	800721*	1	Tumbler ONLY (includes illus. nos. 1, 2, and 6)
	800891	1	Stainless Steel Tumbler and Support Assembly Complete with Felt Collar (includes illus. nos. 1 through 11)
	800841*	1	Stainless Steel Tumbler ONLY (includes illus. nos. 1, 2, and 6)
2	301315	2	Short Tumbler Rib ONLY
	301316	1	Tall Tumbler Rib ONLY
	301414	2	Stainless Steel Short Tumbler Rib ONLY
	301415	1	Stainless Steel Tall Tumbler Rib ONLY
3	150518	1	5/16-18 x 3/8" Socket Button Head Screw
4	100915	3	3/8-16 x 31" Tie Rod
5	153004	3	3/8" Flat Washer
6	154210	30	5/32" x 3/16" Pop Rivet
7	800617	1	Tumbler Support ONLY
8	152027	3	3/8-16 Hex Nut
9	153005	3	3/8" Lock Washer
10	153004	3	3/8" Flat Washer
11	116003	1	Felt Collar ONLY
	401010	1	#847 Adhesive for Felt Collar (5 oz. tube) – Not Illustrated

* Felt collar is not included and must be ordered separately.



<u>Illus. No.</u>	<u>Part No.</u>	<u>Qty.</u>	<u>Description</u>
1	883995	1	White Locking External Lint Drawer
	882712	1	Almond Locking External Lint Drawer
	883996	1	Blue Locking External Lint Drawer
	883994	1	Ivory Locking External Lint Drawer
	882708	1	White External Lint Drawer
	882709	1	Almond External Lint Drawer
	882710	1	Blue External Lint Drawer
	883472	1	Ivory External Lint Drawer
	2	882478	1

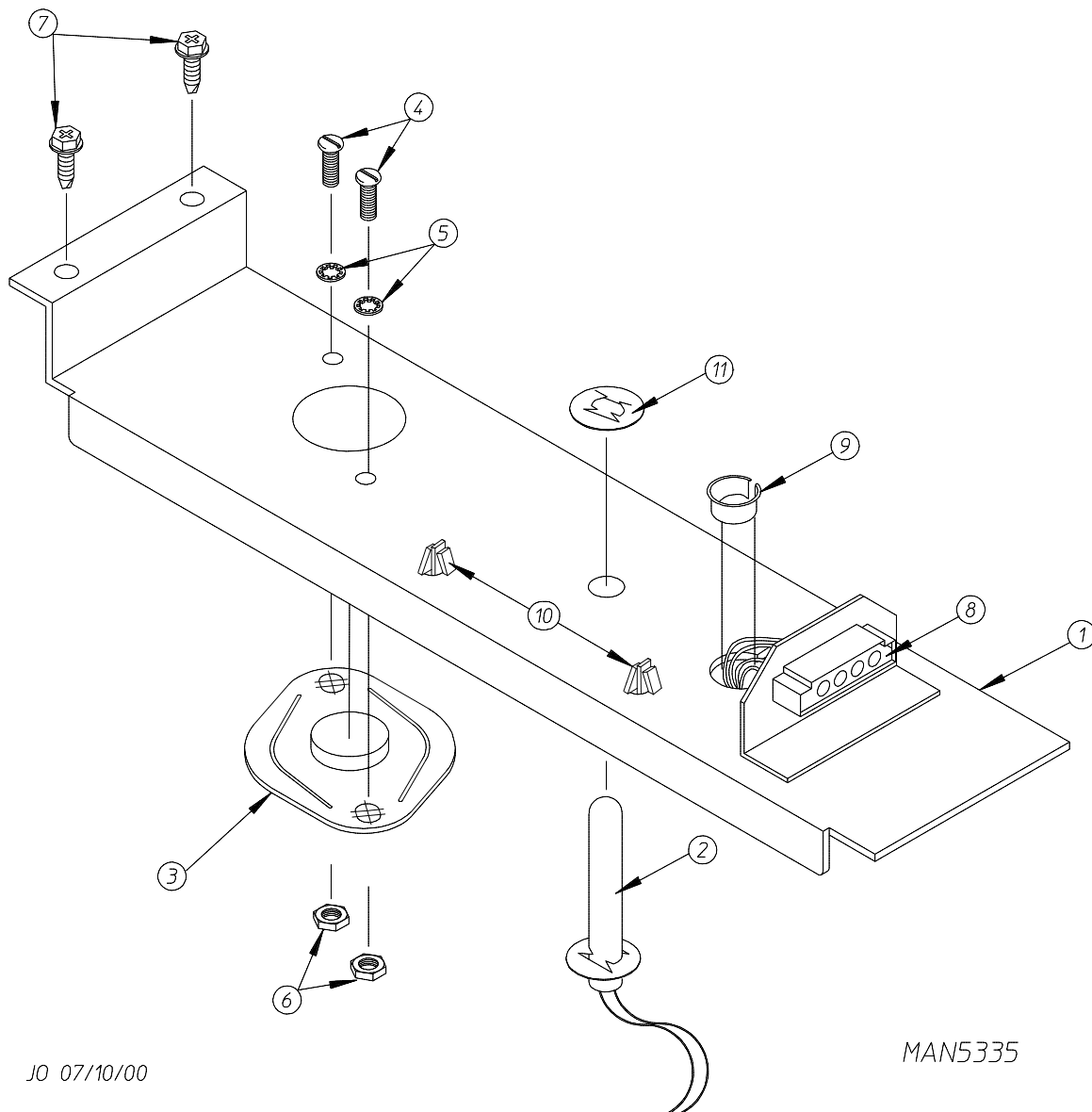
Lint Drawer Switch Assembly



<u>Illus. No.</u>	<u>Part No.</u>	<u>Qty.</u>	<u>Description</u>
1	800972	1	Lint Drawer Switch Box (for bottom pocket Only)
2	122002*	1	Lint Drawer Switch
	150301	1	#8-18 x 7/16" Phillips Pan Head TEK Screw – Not Illustrated (for bottom pocket Only)

* Duplicate lint drawer switch for upper pocket.

Upper Pocket Sensor Bracket Assembly

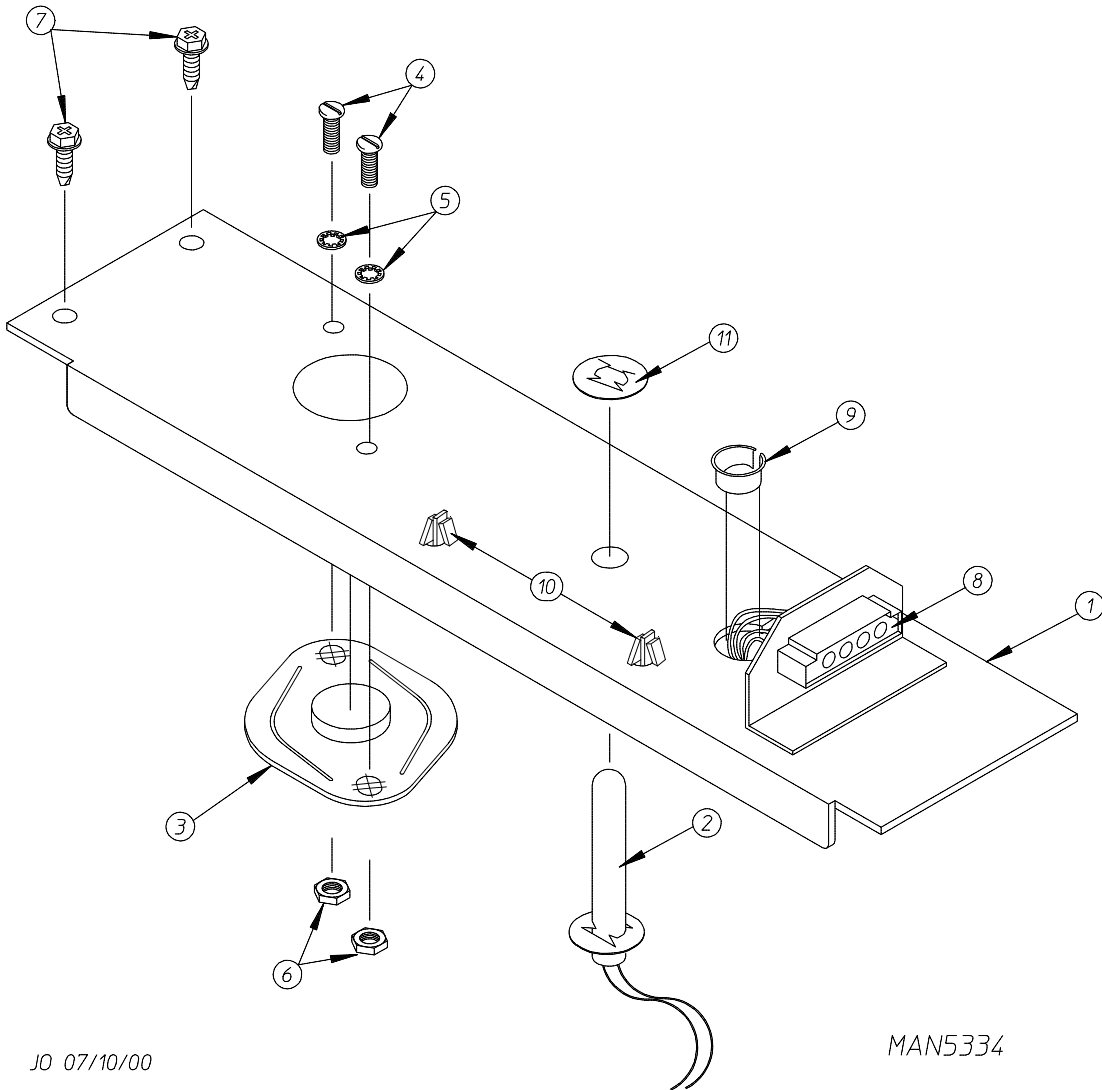


JO 07/10/00

MAN5335

<u>Illus. No.</u>	<u>Part No.</u>	<u>Qty.</u>	<u>Description</u>
1	800769	1	Temperature Sensor Bracket
	882726	1	Temperature Sensor Bracket Complete (includes illus. nos. 1 through 11)
2	882931	1	Temperature Sensor Probe (includes illus. nos. 2, 8, 10, and 11)
3	130112	1	225° Automatic Reset Thermostat
4	150005	2	#6-32 x 1/4" Round Head Machine Screw
5	153010	2	#6 Star Washer
6	152000	2	#6-32 Hex Nut
7	150309	2	#10-16 x 1/2" Hex Head TEK Crimplite Screw
8	122605	1	4-Pin Plug (female)
9	121300	1	Open / Closed Bushing
10	121494	2	3/16" Push Mount Wire Tie
11	154007	2	1/4" Push-On Fastener

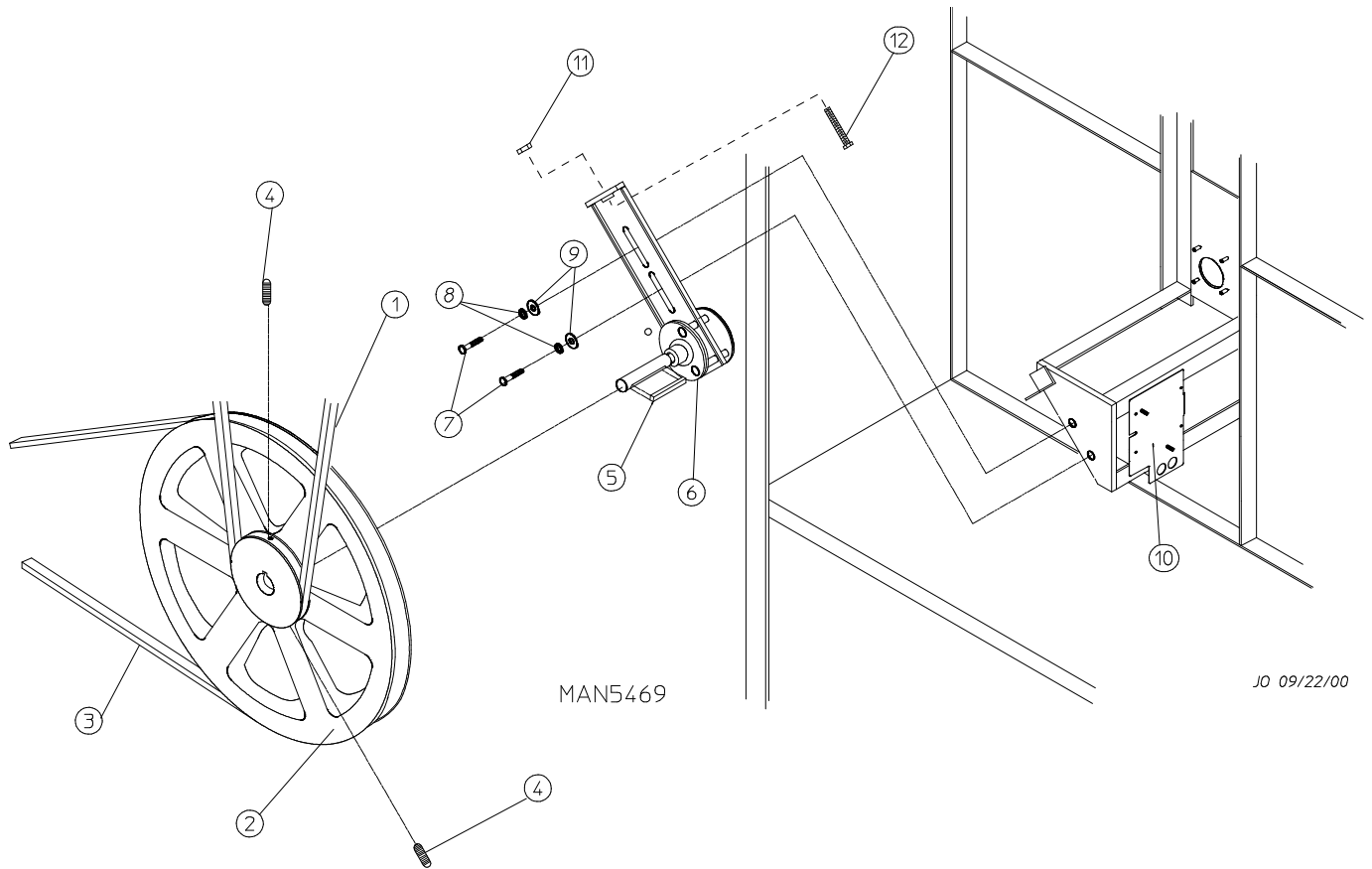
Lower Pocket Sensor Bracket Assembly



JD 07/10/00

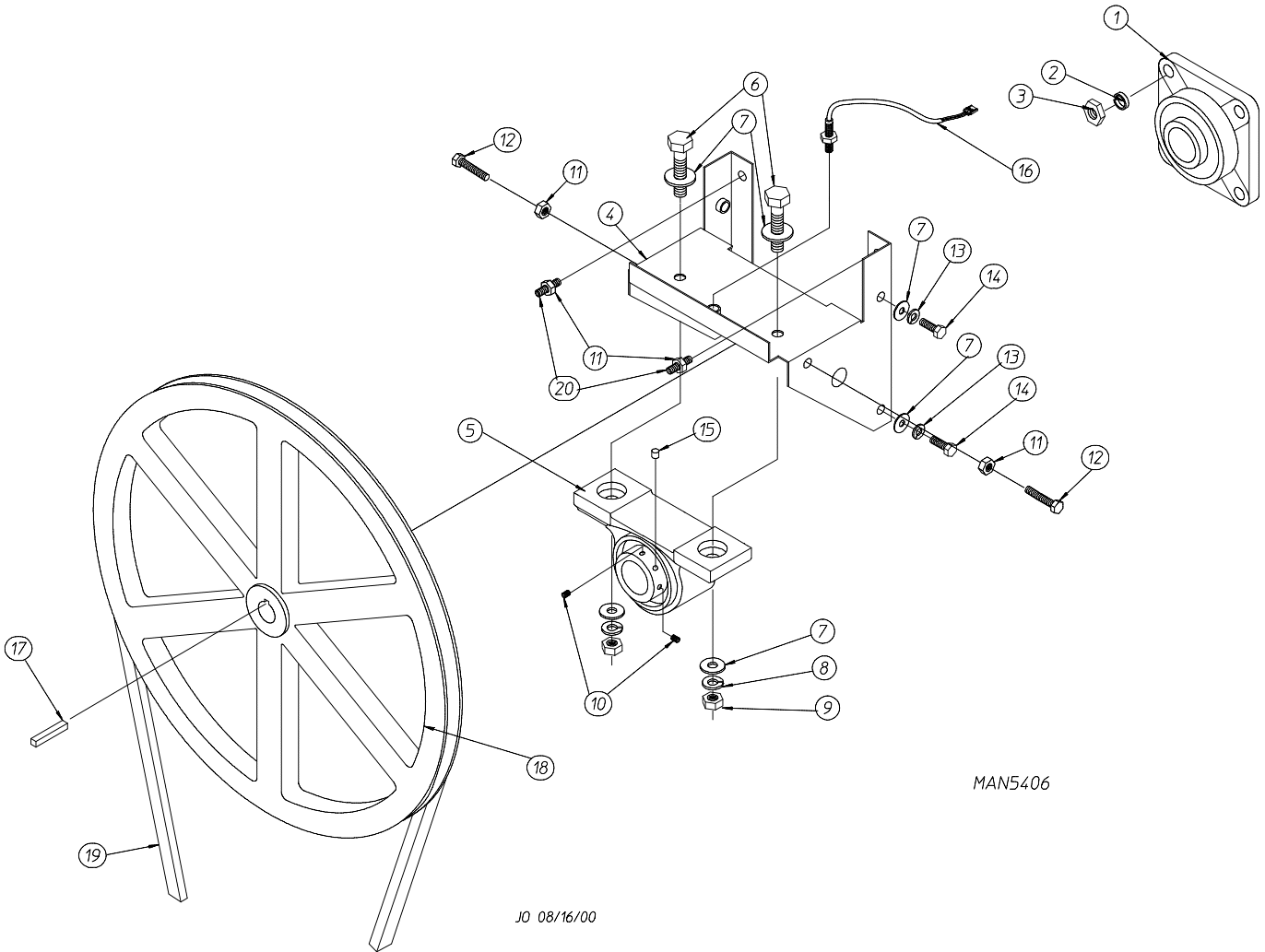
MAN5334

<u>Illus. No.</u>	<u>Part No.</u>	<u>Qty.</u>	<u>Description</u>
1	800770	1	Temperature Sensor Bracket ONLY
	882727	1	Temperature Sensor Bracket Complete (includes illus. nos. 1 through 11)
2	882931	1	Temperature Sensor Probe (includes illus. nos. 2, 8, 10, and 11)
3	130112	1	225° Automatic Reset Thermostat
4	150005	2	#6-32 x 1/4" Round Head Machine Screw
5	153010	2	#6 Star Washer
6	152000	2	#6-32 Hex Nut
7	150309	2	#10-16 x 1/2" Hex Head TEK Crimptite Screw
8	122605	1	4-Pin Connector (female)
9	121300	1	Open / Closed Bushing
10	121494	2	3/16" Push Mount Wire Tie
11	154007	2	1/4" Push-On Fastener



<u>Illus. No.</u>	<u>Part No.</u>	<u>Qty.</u>	<u>Description</u>
1	100111	1	5L-650 V-Belt (to tumbler pulley)
2	101129	1	9" x 2-1/2" Pulley with 3/16" Key
3	100113	1	4L-400 V-Belt (to motor pulley) for 60 Hz Models ONLY
	100115	1	4L-410 V-Belt (to motor pulley) for 50 Hz Models ONLY
4	154301	2	5/16-18 x 1" Allen Setscrew
5	100705	1	3/16" x 3/16" x 1-3/8" Key
6	882777	1	Idler Bearing Assembly Complete
7	150617	2	3/8-16 x 1" Hex Head Machine Bolt
8	153005	2	3/8" Lock Washer
9	153004	2	3/8" Flat Washer
10	—	—	Direct Spark Ignition Module Mounting Bracket (refer to Direct Spark Ignition Gas Valve / Burner Assembly on page 26)
11	152004	1	5/16-18 Hex Nut
12	150509	1	5/16-18 x 3" Hex Head Machine Bolt

Tumbler Bearing Assembly

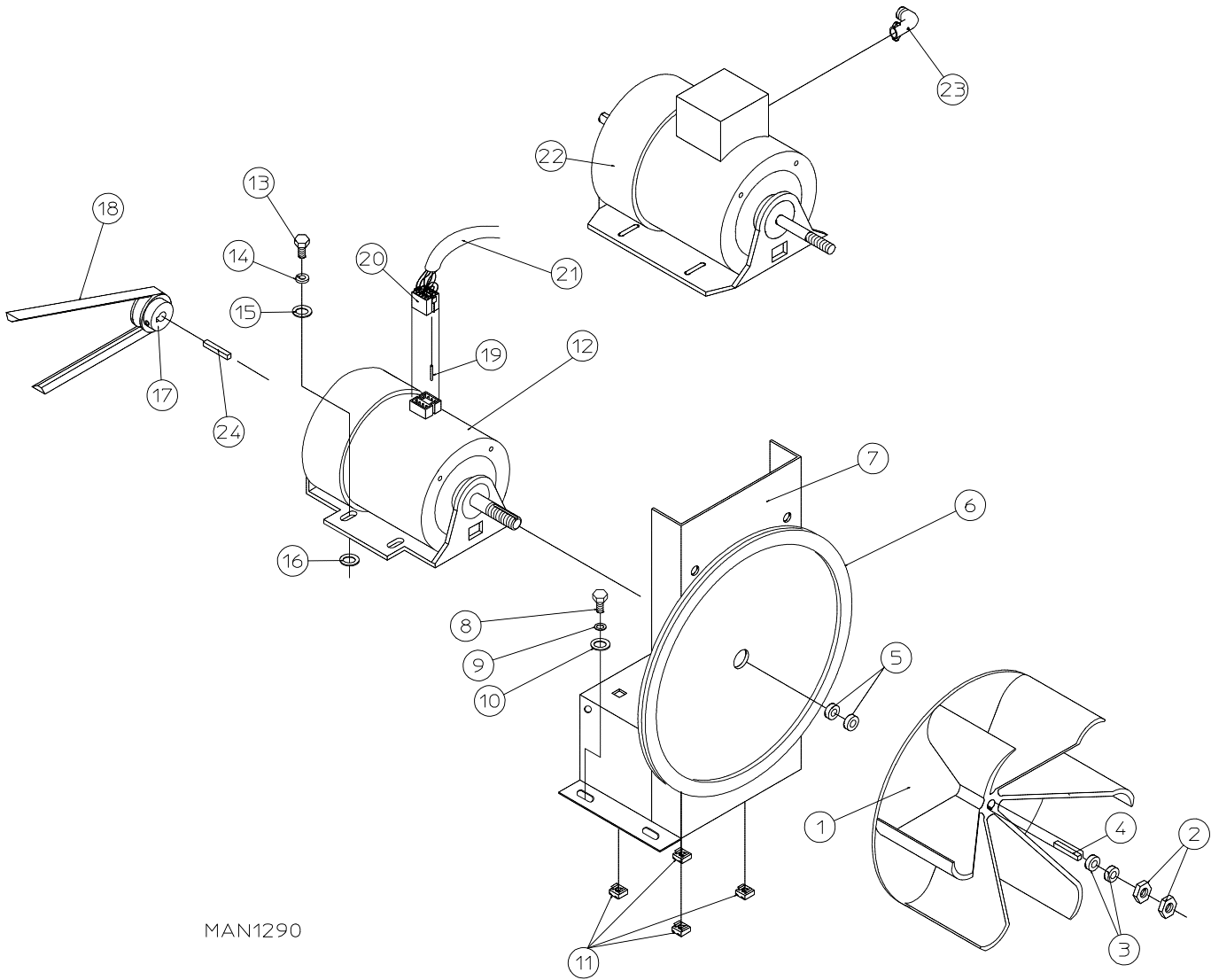


MAN5406

JO 08/16/00

<u>Illus. No.</u>	<u>Part No.</u>	<u>Qty.</u>	<u>Description</u>
1	880203	1	1-3/8" Flange Bearing
2	153005	4	3/8" Lock Washer
3	152005	4	3/8-16 Hex Nut
4	882544	1	Pillow Block Bearing Assembly Complete (includes illus. nos. 4 through 14 and 20)
	882545	1	Pillow Block Bearing Assembly Complete (for models mfd. with rotational sensor) (includes illus. nos. 4 through 16 and 20)
	882542	1	Pillow Block Bearing Support ONLY
	882543	1	Pillow Block Bearing Support ONLY (for models mfd. with rotational sensor)
5	880202	1	1-3/8" Pillow Block Bearing
	880779	1	1-3/8" Pillow Block Bearing (for models mfd. with rotational sensor)
6	150601	2	3/8-16 x 2" Hex Bolt
7	153004	8	3/8" Flat Washer
8	153005	2	3/8" Lock Washer
9	152005	2	3/8-16 Hex Nut
10	154326	2	5/16-24 x 3/8" Black Setscrew
11	152004	4	5/16-18 Hex Nut
12	150621	2	5/16-18 x 1-1/2" Tap Bolt
13	153002	4	5/16" Lock Washer
14	150501	4	5/16-18 x 3/4" Tap Bolt
15	102120	1	Sintered 8 Magnet (for models mfd. with rotational sensor)
16	824807	1	Rotational Sensor Assembly (for models mfd. with rotational sensor)
17	100713	1	1/4" x 1/4" x 7/8" Key
18	884042	1	18" Pulley
19	100111	1	5L-650 V-Belt (to idler assembly)
20	150610	2	5/16-18 x 1-1/2" Allen Setscrew

T.E.F.C. Motor Mount Assembly



MAN1290

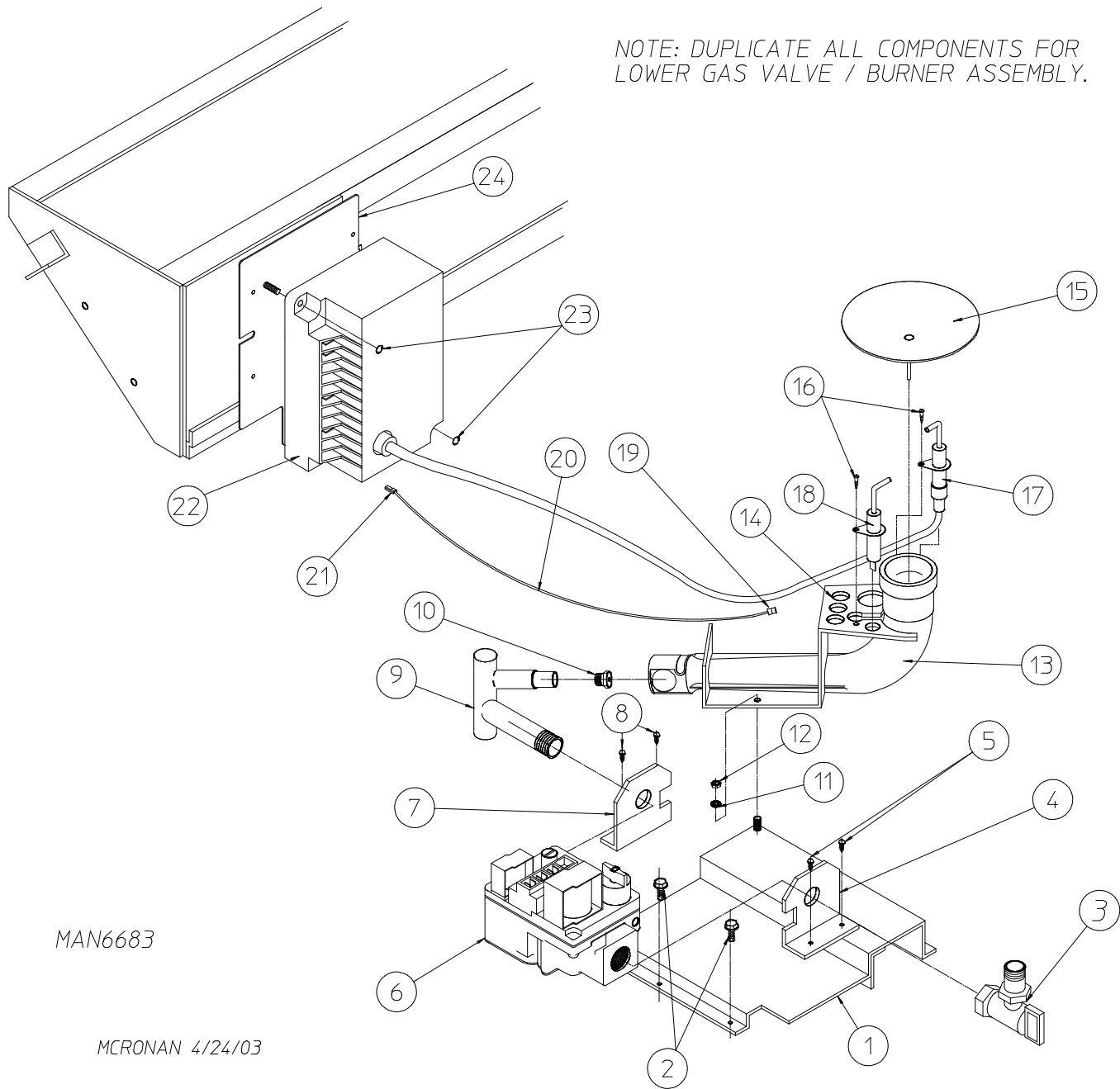
<u>Illus. No.</u>	<u>Part No.</u>	<u>Qty.</u>	<u>Description</u>
1	100604	1	12-1/2" Impellor with 1/2" Bore
2	152006	2	1/2-20 Left-Hand Jam Nut
3	153050	*	1/2" S.A.E. Flat Washer
4	100702	1	1/8" x 1/8" x 1-1/2" Key
5	153050	*	1/2" S.A.E. Flat Washer
6	117604	4	Noise Suppression Tape (sold by the foot)
7	800965	1	Motor Mount ONLY
	803967	1	1/2 hp 115-230v (1 \emptyset) 60 Hz Motor Mount Assembly Complete with Plug Motor (includes illus. nos. 1 through 7 and 11 through 17)
	822526	1	1/2 hp 240v (1 \emptyset) 50 Hz Totally Enclosed, Fan-Cooled Motor Mount Assembly Complete with Plug Motor (includes illus. nos. 1 through 7 and 11 through 17)
	803968**	1	1/2 hp 208/230/380/460v (3 \emptyset) 60 Hz Totally Enclosed, Fan-Cooled Motor Mount Assembly Complete (includes illus. nos. 1 through 7, 11, 13 through 17, 22, and 23)
	803902**	1	1/2 hp 208/230/380/460v (3 \emptyset) 50 Hz Totally Enclosed, Fan-Cooled Motor Mount Assembly Complete (includes illus. nos. 1 through 7, 11, 13 through 17, 22, and 23)
8	150501	4	5/16-18 x 3/4" Hex Head Machine Bolt
9	153002	4	5/16" Lock Washer
10	153001	4	5/16" Flat Washer
11	154000	4	5/16-18 Tinnerman Nut
12	181049	1	1/2 hp 100-230v (1 \emptyset) 50/60 Hz Motor with Plug
	883629	1	1/2 hp 240v (1 \emptyset) 50 Hz Motor with Plug (for models mfd. prior to August 22, 2002)
13	150501	4	5/16-18 x 3/4" Hex Head Machine Bolt
14	153002	4	5/16" Lock Washer
15	153001	4	5/16" Flat Washer
16	153001	*	5/16" Flat Washer
17	101131	1	1/2" x 2-1/4" Motor Pulley (for use on 1 \emptyset , 60 Hz models Only)
	101133	1	5/8" x 2-1/4" Motor Pulley (for use on 3 \emptyset , 60 Hz models Only)
	101125	1	1/2" x 2-1/2" Motor Pulley (for use on 1 \emptyset , 50 Hz models Only) (for models mfd. as of August 22, 2002)
	101130	1	5/8" x 2-1/2" Motor Pulley (for use on 3 \emptyset , 50 Hz models and 1 \emptyset , 50 Hz models) (for models mfd. prior to August 22, 2002)
18	100113	1	4L-400 V-Belt (to idler) for 60 Hz Models ONLY
	100115	1	4L-410 V-Belt (to idler) for 50 Hz Models ONLY
19	122701	8	Socket Terminal
20	137030	1	8-Pin Housing
	122801	1	Pin / Socket Extraction Tool – Not Illustrated
21	837005	1	120v (1 \emptyset) Motor Harness with Plug
	837006	1	230v (1 \emptyset) Motor Harness with Plug
22	100007**	1	1/2 hp 208/230/380/460v (3 \emptyset) 50/60 Hz Totally Enclosed, Fan-Cooled Motor
23	120200	1	3/8" x 90° Connector
24	100701	1	3/16" x 3/16" x 1" Key (for use on 3 \emptyset models Only)

* As required.

** Specify voltage when ordering.

Direct Spark Ignition Gas Valve / Burner Assembly

NOTE: DUPLICATE ALL COMPONENTS FOR LOWER GAS VALVE / BURNER ASSEMBLY.



MAN6683

MCRONAN 4/24/03

Direct Spark Ignition Gas Valve / Burner Assembly

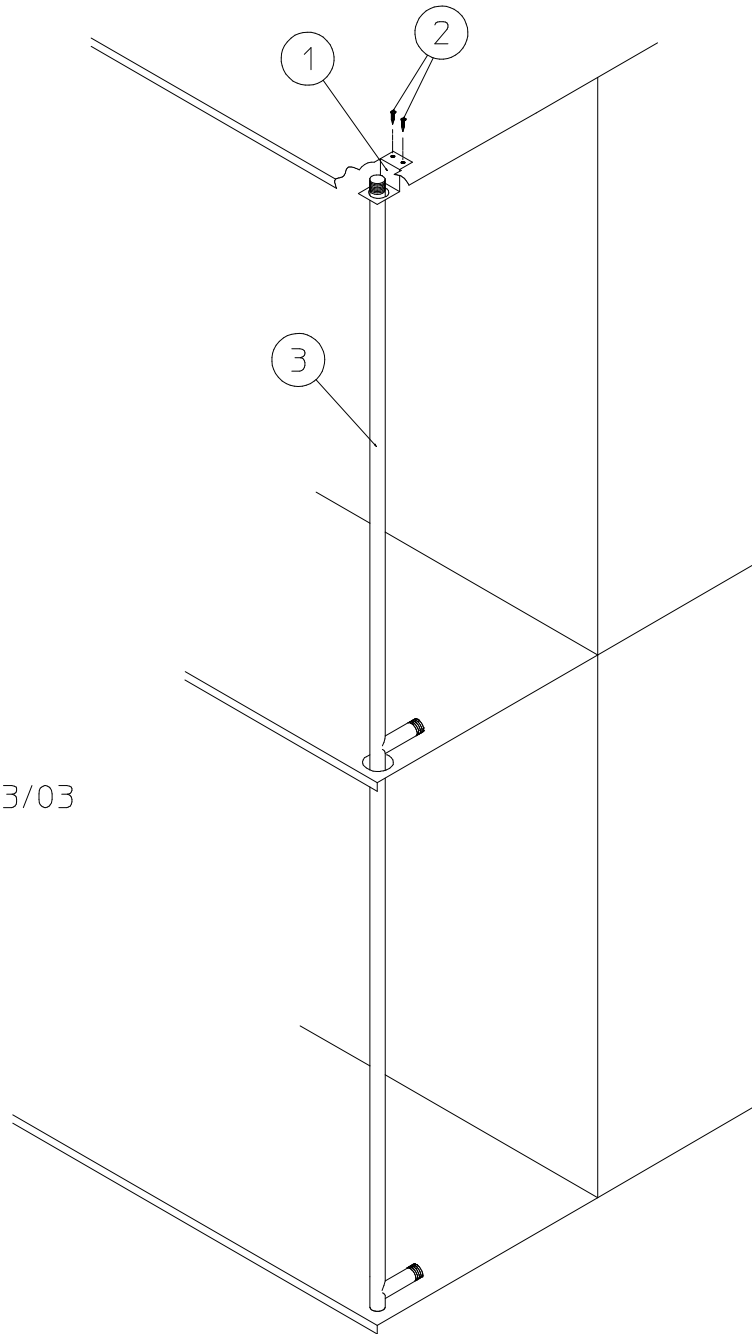
<u>Illus. No.</u>	<u>Part No.</u>	<u>Qty.</u>	<u>Description</u>
1	824142	1	Gas Valve / Burner Tube Mounting Plate ONLY
	809313*	1	Natural Gas – Gas Valve / Burner Assembly Complete Less Orifice (includes illus. nos. 1 and 3 through 18)
	809314*	1	Liquid Propane Gas Valve / Burner Assembly Complete Less Orifice (includes illus. nos. 1 and 3 through 18)
	882396**	1	Liquid Propane Conversion Kit with Orifice
2	150300	2	#10-16 x 1/2" Hex Washer TEK Screw
3	141317	1	1/2 Union Elbow (for models mfd. as of June 30, 2003)
	881367	1	Union Shutoff with 1/2" Tailpiece (for models mfd. prior to June 30, 2003)
4	318650	1	Notched Pipe Bracket
5	150301	2	#8-18 x 7/16" Phillips Pan Head TEK Screw
6	887274	1	1/2" 24 VAC (natural gas) Gas Valve
	887273	1	1/2" 24 VAC (liquid propane) Gas Valve
7	318650	1	Notched Pipe Bracket
8	150301	2	#8-18 x 7/16" Phillips Pan Head TEK Screw
9	141235	1	1/2" Single Port Manifold
10	140829	1	#18 Burner Orifice (natural gas Only)
	140814	1	#38 Burner Orifice (liquid propane gas Only)
11	153012	1	#8 Steel Burr
12	152001	1	#8-32 Hex Nut
13	141131	1	Up-Shot Burner Tube (includes illus. no. 15)
14	318009	1	Burner Tube Bracket
15	_____***	1	Flame Spreader
16	150315	2	#6 x 3/8" Phillips Pan Head Machine Screw
17	128917	1	Spark Electrode with High Voltage Wire
	305412	1	Direct Spark Ignition Ignitor Gap Feeler Gauge – Not Illustrated
18	128918	1	Flame Sensor Probe
19	121028	1	1/4" Insulated Terminal
20	132607	2	#18 Gauge Red Silicone Wire (sold by the foot)
21	121028	1	1/4" x 0.032 Insulated Terminal
22	884284	1	Direct Spark Ignition Module with Three Tries (for models mfd. as of April 14, 2000)
	884284	1	Direct Spark Ignition Module Conversion Kit (for models mfd. prior to April 14, 2000)
23	152013	2	#6-32 Hex Nut
24	824131	1	Direct Spark Ignition Module Mounting Bracket

* Burner orifice is not included and must be ordered separately.

** Consult factory for elevations over 2,000 feet.

*** Not sold separately.

Gas Piping Assembly

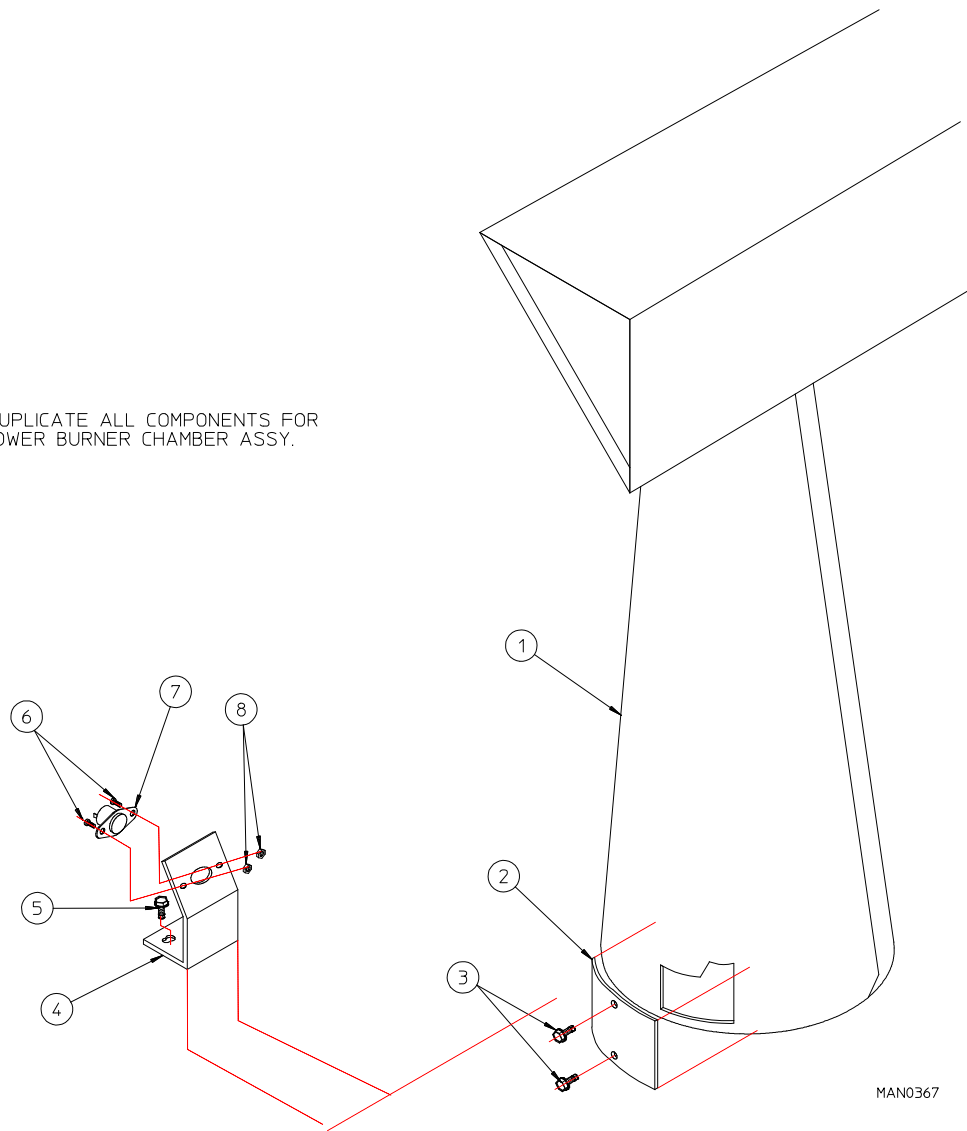


MAN6922
JCARRITA 9/23/03

<u>Illus. No.</u>	<u>Part No.</u>	<u>Qty.</u>	<u>Description</u>
1	318702	1	Top Pipe Support Bracket ONLY
2	150300	2	#10-16 x 1/2" Hex Washer TEK Screw
3	141236	1	Gas Piping Manifold

UPPER BURNER CHAMBER ASSY

NOTE: DUPLICATE ALL COMPONENTS FOR LOWER BURNER CHAMBER ASSY.



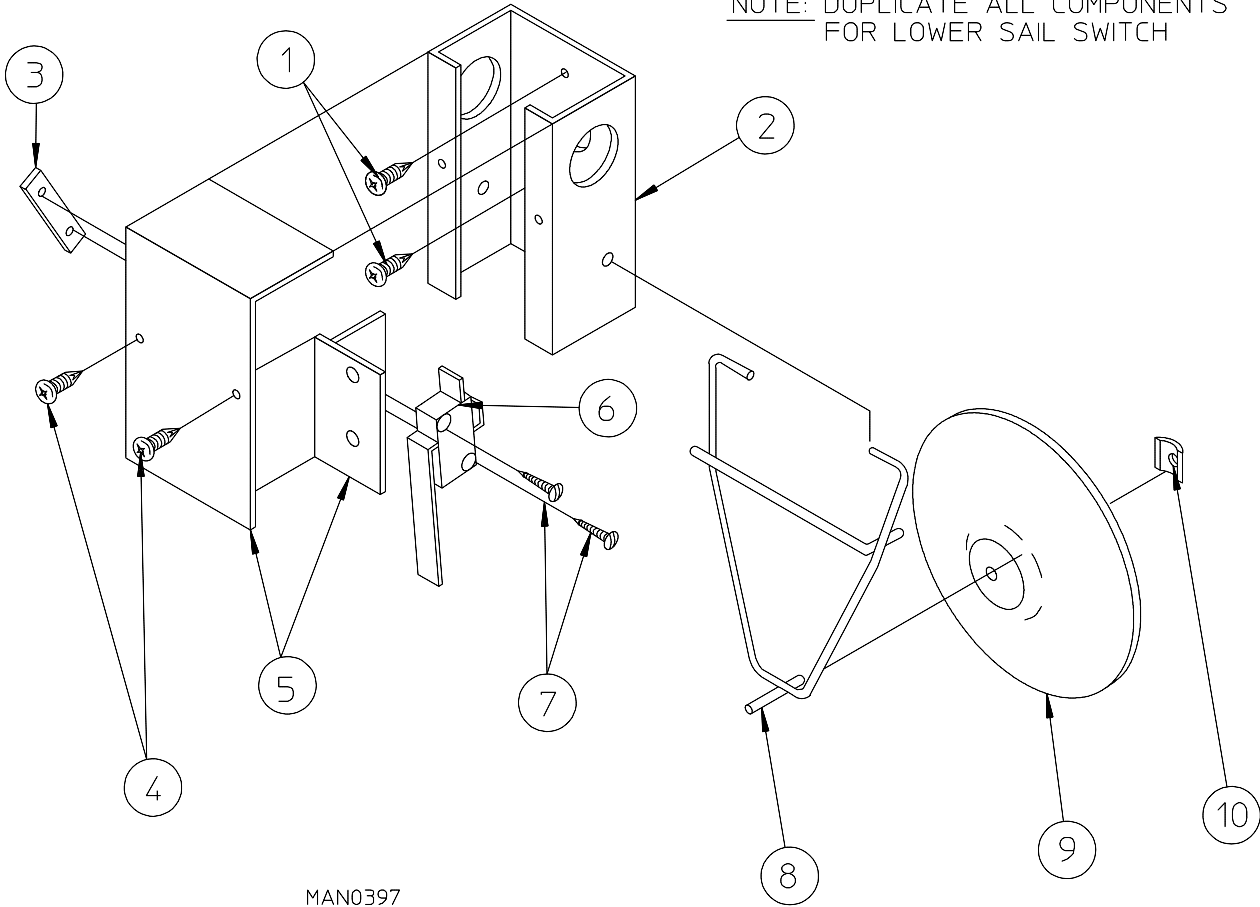
MAN0367

<u>Illus. No.</u>	<u>Part No.</u>	<u>Qty.</u>	<u>Description</u>
1	800526	1	Gas Burner Chamber Assembly (includes illus. nos. 1 through 3)
2	318006	1	Flame Viewing Plate
3	150300	2	#10-16 x 1/2" Hex Washer TEK Screw
4	802502	1	Hi-Limit Bracket Assembly (includes illus. nos. 4 through 8)
	319710	1	Hi-Limit Bracket ONLY
5	150301	2	#8-18 x 7/16" Phillips Pan Head TEK Screw
6	150001	2	#6-32 x 1/2" Right-Hand Machine Screw
7	130301	1	225° Hi-Limit Thermostat
8	151000	2	#6-32 Pal Nut

Sail Switch Assembly

UPPER SAIL SWITCH

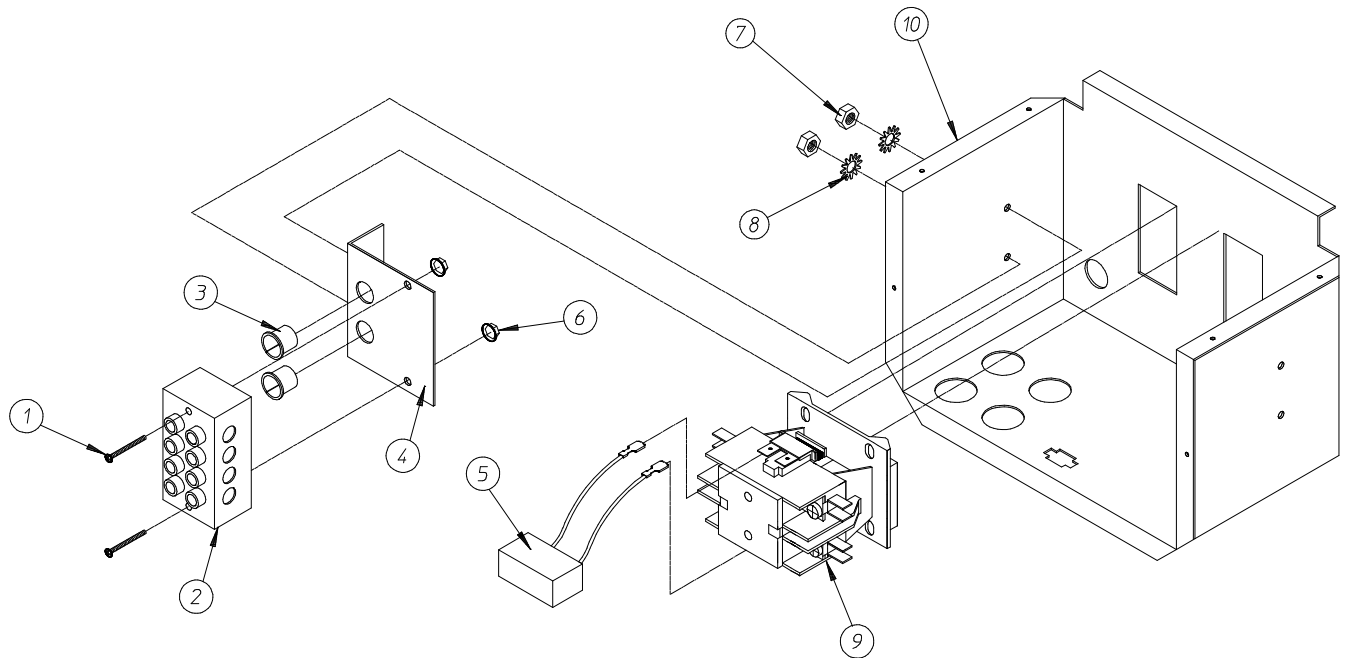
NOTE: DUPLICATE ALL COMPONENTS FOR LOWER SAIL SWITCH



MAN0397

<u>Illus. No.</u>	<u>Part No.</u>	<u>Qty.</u>	<u>Description</u>
1	150301	2	#8-18 x 7/16" Phillips Pan Head TEK Screw
2	802800	1	Sail Switch Box with Cover and Bracket (includes illus. nos. 2, 4, and 5)
3	154004	1	Twin Speed Nut
4	150300	2	#10-16 x 1/2" Hex Head TEK Screw
5	802799	1	Sail Switch Box Cover and Bracket ONLY
6	122200	1	Sail Switch
7	150303	2	#4 x 3/4" Pan Head Machine Screw
8	105500	1	Sail Switch Actuator Rod
9	319202	1	Sail Switch Damper
10	154002	1	1/8" Push-On Fastener

Single-Phase (1Ø) Motor, Electrical Relay Panel Assembly



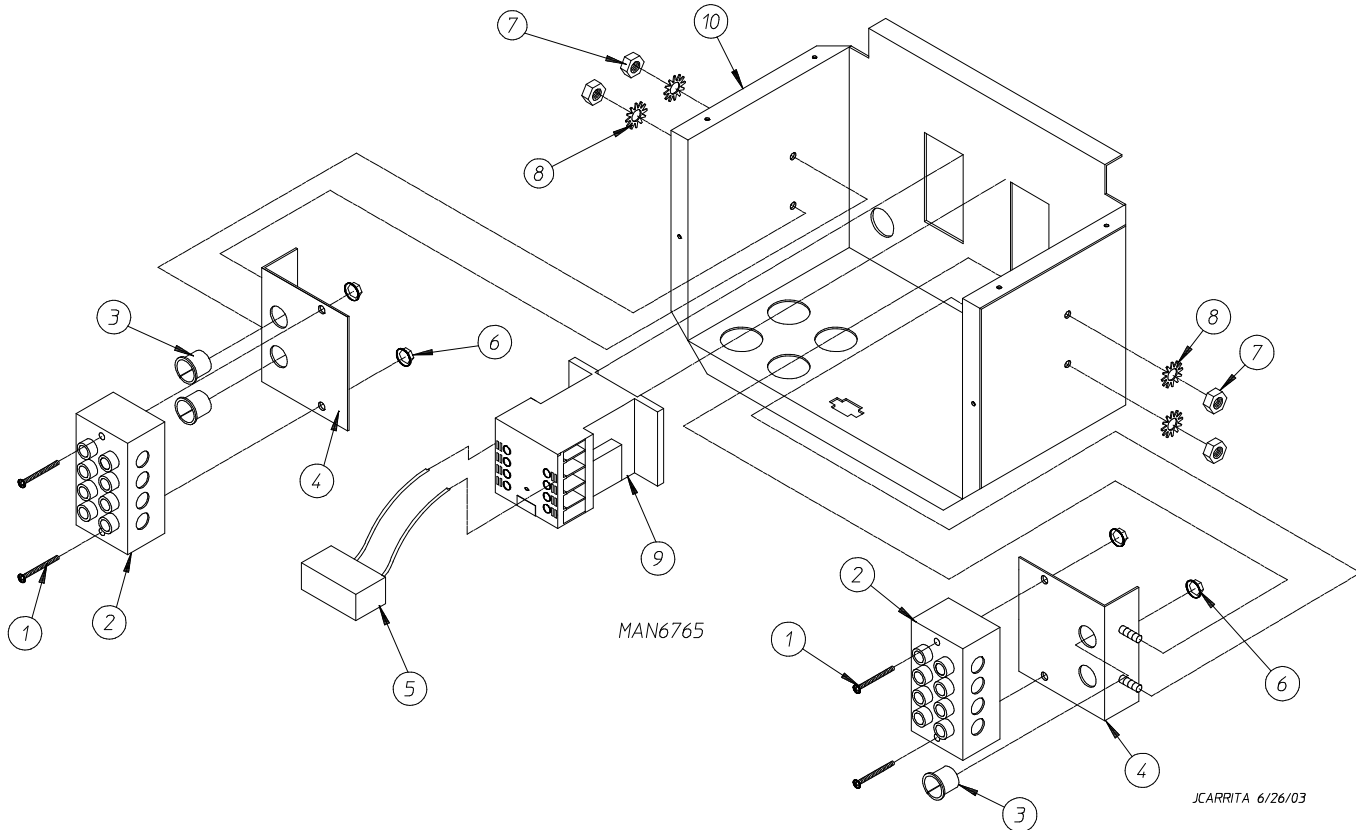
MAN6956

JCARRITA 10/14/03

Illus. No.	Part No.	Qty.	Description
1	150009*	2	#6-32 x 1-1/2" Phillips Machine Screw
2	120701*	1	Power Block
3	121300*	2	Open / Closed Bushing
4	353142*	1	Power Block Mounting Bracket
5	824828	1	Arc Suppressor Capacitor
6	151000*	2	#6-32 Pal Nut
7	152001*	2	#8-32 Hex Nut
8	153012*	2	#8 Star Washer
9	132498	1	24 VAC Motor Contactor
10	826324	1	Top Rear Electric Box Assembly Complete (115V)
	826347	1	Bottom Rear Electric Box Assembly Complete (115V)
	826422	1	Top Rear Electric Box Assembly Complete (208-240V)
	826421	1	Bottom Rear Electric Box Assembly Complete (208-240V)
	850474	1	Rear Electric Box ONLY

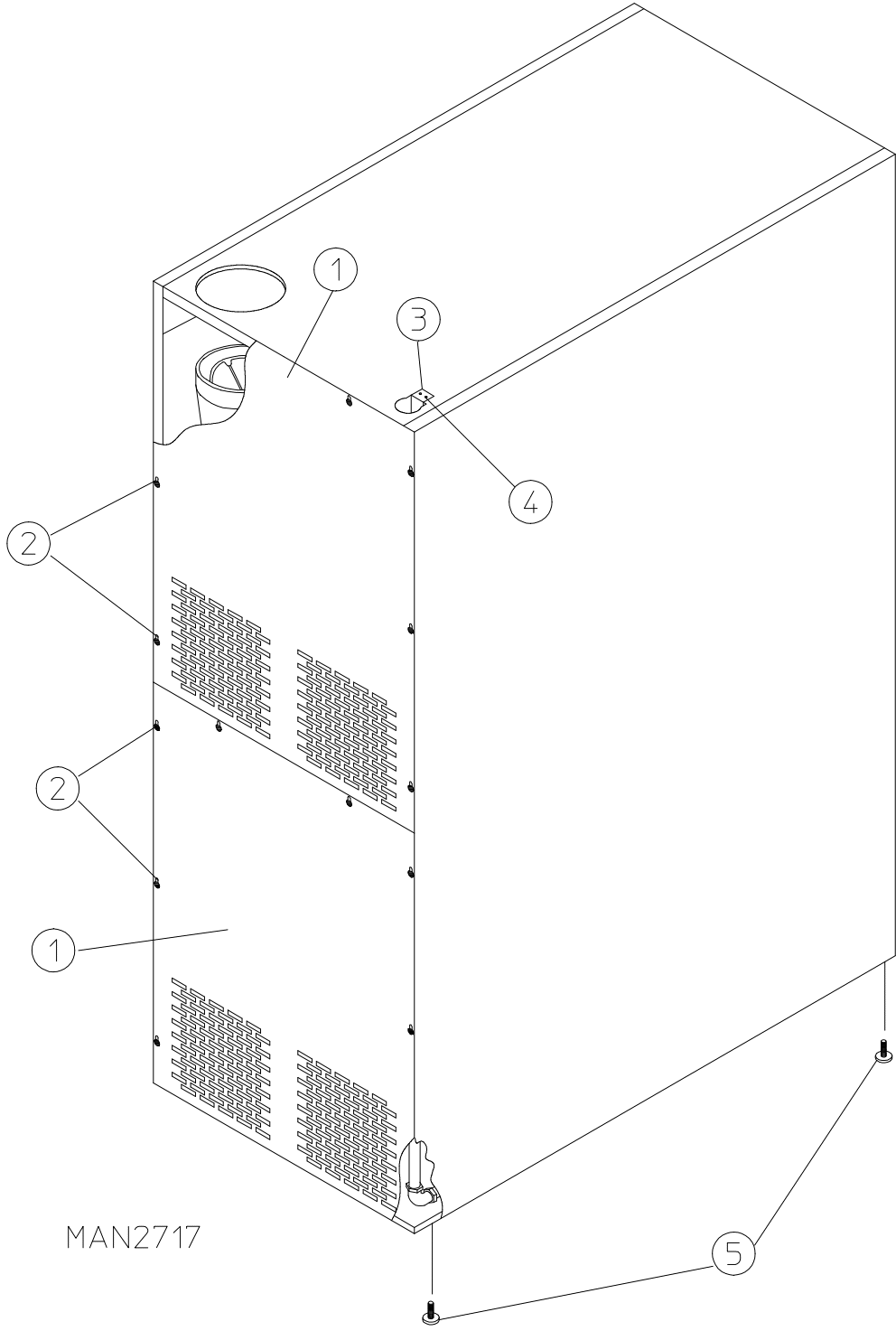
* Parts for top pocket electric box only.

3-Phase (3 ϕ) Motor, Electrical Relay Panel Assembly



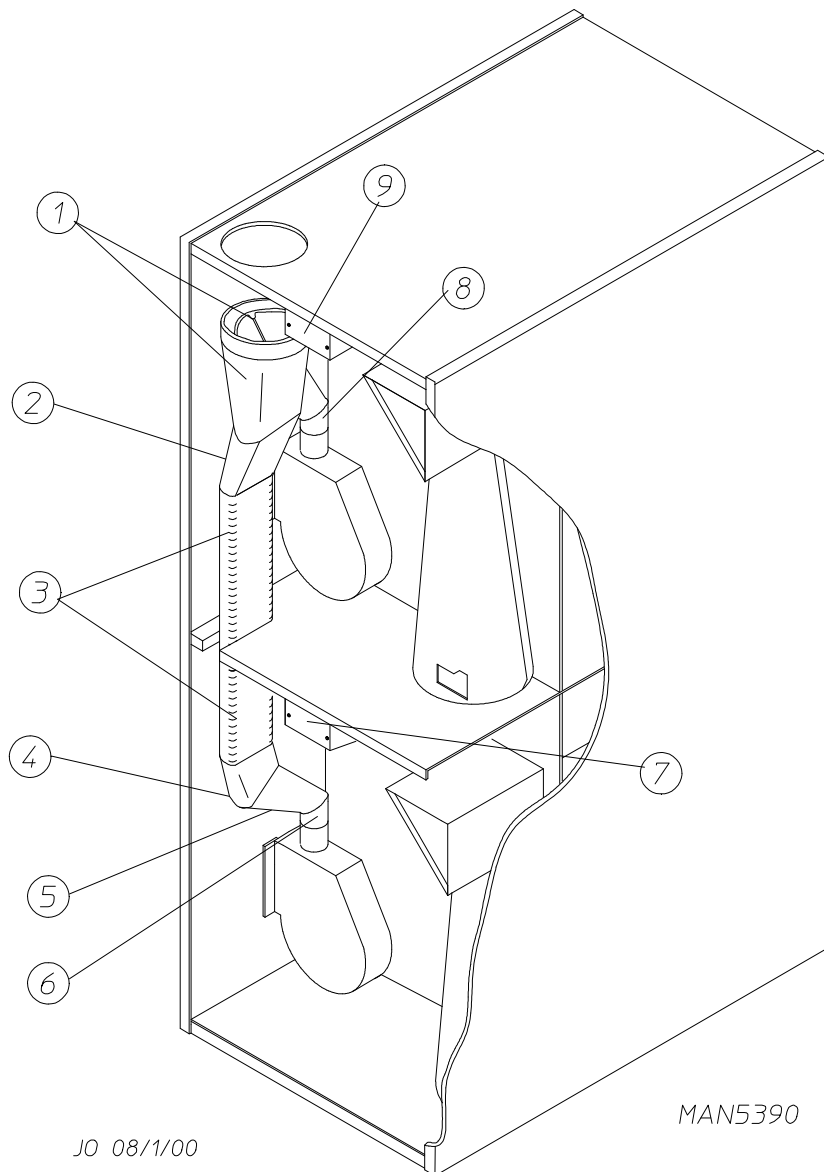
Illus. No.	Part No.	Qty.	Description
1	150009*	4	#6-32 x 1-1/2" Phillips Machine Screw
2	120701*	2	Power Block
3	121300*	3	Open / Closed Bushing
4	353142*	2	Power Block Mounting Bracket
5	137015	1	Arc Suppressor Capacitor ONLY
6	151000*	4	#6-32 Pal Nut
7	152001*	4	#8-32 Hex Nut
8	153012*	4	#8 Star Washer
9	132447	1	24 VAC Motor Contactor
10	826340	1	Top Rear Electric Box Assembly Complete
	826348	1	Bottom Rear Electric Box Assembly Complete
	850474	1	Rear Electric Box ONLY

* Parts for top pocket electric box only.



<u>Illus. No.</u>	<u>Part No.</u>	<u>Qty.</u>	<u>Description</u>
1	311014	2	Upper / Lower Back Guard Assembly
2	150301	16	#8-18 x 7/16" Phillips Pan Head TEK Screw
3	318702	1	Top Pipe Support Bracket ONLY
4	150300	2	#10-16 x 1/2" Hex Washer TEK Screw
5	103500	4	Adjustable Leveling Leg

Exhaust Ducting Assembly



<u>Illus. No.</u>	<u>Part No.</u>	<u>Qty.</u>	<u>Description</u>
1	880505	1	Wye Branch Damper Assembly
2	143527	1	6" Round x 7" Oval Straight Boot
3	143539	1	15-1/2" Long x 7" Oval Duct
4	143537	1	7" Oval x 45° Elbow
5	143538	1	6" Round x 7" Oval Straight Boot
6	143536	2	6" Round x 45° Elbow
7	315062	1	Rear Wiring Box Cover ONLY
	150300	2	#10-16 x 1/2" Hex Washer TEK Screw – Not Illustrated
8	143536	2	6" Round x 45° Elbow
9	315062	1	Rear Wiring Box Cover ONLY
	150300	2	#10-16 x 1/2" Hex Washer TEK Screw – Not Illustrated
	117505	*	Aluminum Duct Tape (sold by the foot) – Not Illustrated

* As required.

<u>Part No.</u>	<u>Description</u>
114533	"Black/White/Green Ground" Label
112280	"Clean Lint Screen" Label
112533	"Phase 5 Coin Program Location Summary" Label
114001	"Caution – Exhaust/Lint Screen" Label
114006	"Warning – Fire Hazards" Label
120100	3/8" Straight (BX) Connector
120300	3/8" x 45° (BX) Connector
120400	3/8" Red Jacket (BX) Insulator
120500	3/8" Jiffy Clip (BX Retainer Clip)
120600	3/8" Greenfield (BX)
120800	1/4" In-Line Connector
120802	Red Butt Connector
120902	#74B Wire Nut
120903	Crimp-On Wire Nut
121006	#10 Insulated Ring Terminal
121014	1/4" Insulated (female) Terminal
121499	5-1/2" Harness Tie
121500	8" Harness Tie
121503	Harness Tie Mounting Clip
122804	Manometer (water column test gauge)
170194	Tumbler Lint Cleaning Brush
404502	White Brush-In-Cap Bottle Touch-Up Paint
404506	Almond "B" Brush-In-Cap Bottle Touch-Up Paint
404507	Cornflower Blue Brush-In-Cap Bottle Touch-Up Paint
404516	Ivory Brush-In-Cap Bottle Touch-Up Paint

