



AD-285 Parts Manual
24 VAC Phase 5
1992 thru 1997

American Dryer Corporation
88 Currant Road
Fall River, MA 02720-4781
Telephone: (508) 678-9010 / Fax: (508) 678-9447
E-mail: service@amdry.com

Retain This Manual In A Safe Place For Future Reference

American Dryer Corporation products embody advanced concepts in engineering, design, and safety. If this product is properly maintained, it will provide many years of safe, efficient, and trouble-free operation.

ONLY properly licensed technicians should service this equipment.

OBSERVE ALL SAFETY PRECAUTIONS displayed on the equipment or specified in the installation/operator's manual included with the dryer.

WARNING: UNDER NO CIRCUMSTANCES should the door switch or the heat circuit devices ever be disabled.

WARNING: The dryer must never be operated with any of the back guards, outer tops, or service panels removed. PERSONAL INJURY or FIRE COULD RESULT.

We have tried to make this manual as complete as possible and hope you will find it useful. ADC reserves the right to make changes from time to time, without notice or obligation, in prices, specifications, colors, and material, and to change or discontinue models.

Important

For your convenience, log the following information:

DATE OF PURCHASE _____ **MODEL NO.** AD-285

DISTRIBUTORS NAME _____

Serial Number(s) _____

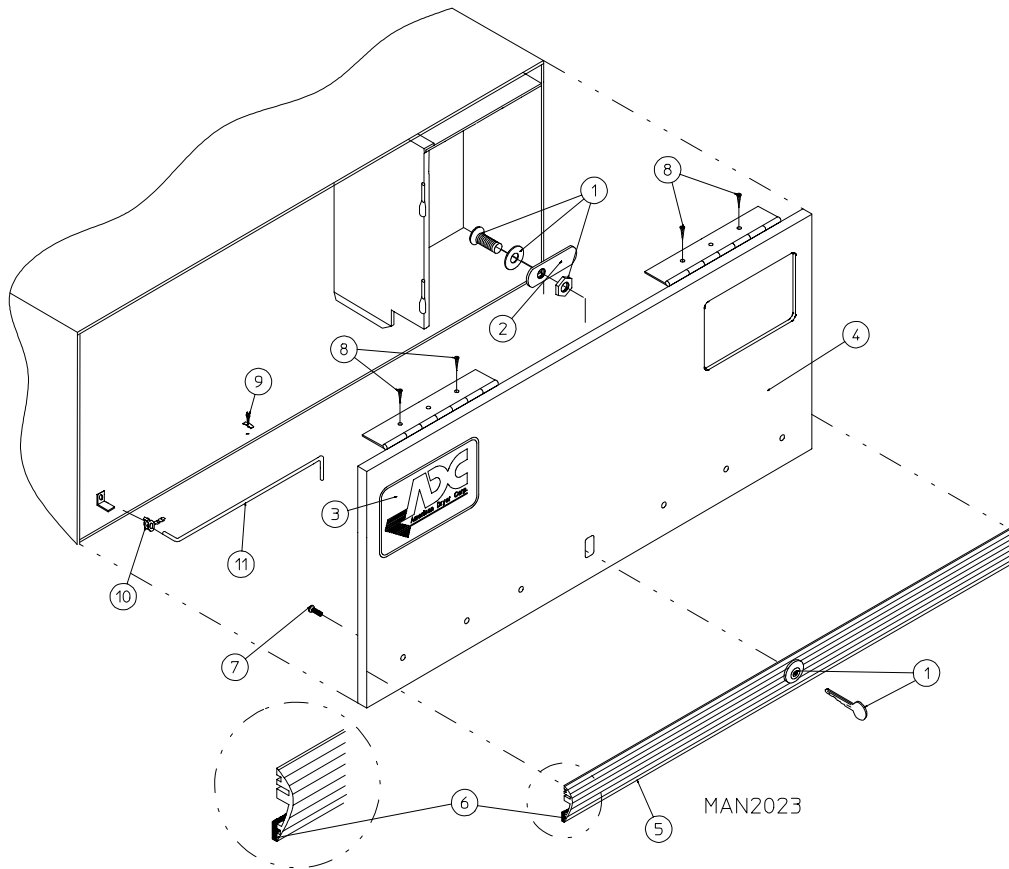
Replacement parts can be obtained from your distributor or the ADC factory. When ordering replacement parts from the factory, you can FAX your order to ADC at (508) 678-9447 or telephone your orders directly to the ADC Parts Department at (508) 678-9010. Please specify the dryer model number and serial number in addition to the description and part number, so that your order is processed accurately and promptly.

The illustrations on the following pages may not depict your particular dryer exactly. The illustrations are a composite of the various dryer models. Be sure to check the descriptions of the parts thoroughly before ordering.

INSTRUCTIONS TO BE FOLLOWED IN THE EVENT THE USER SMELLS GAS MUST BE POSTED IN A PROMINENT LOCATION. THE INSTRUCTIONS TO BE POSTED SHALL BE OBTAINED FROM THE LOCAL GAS SUPPLIER.

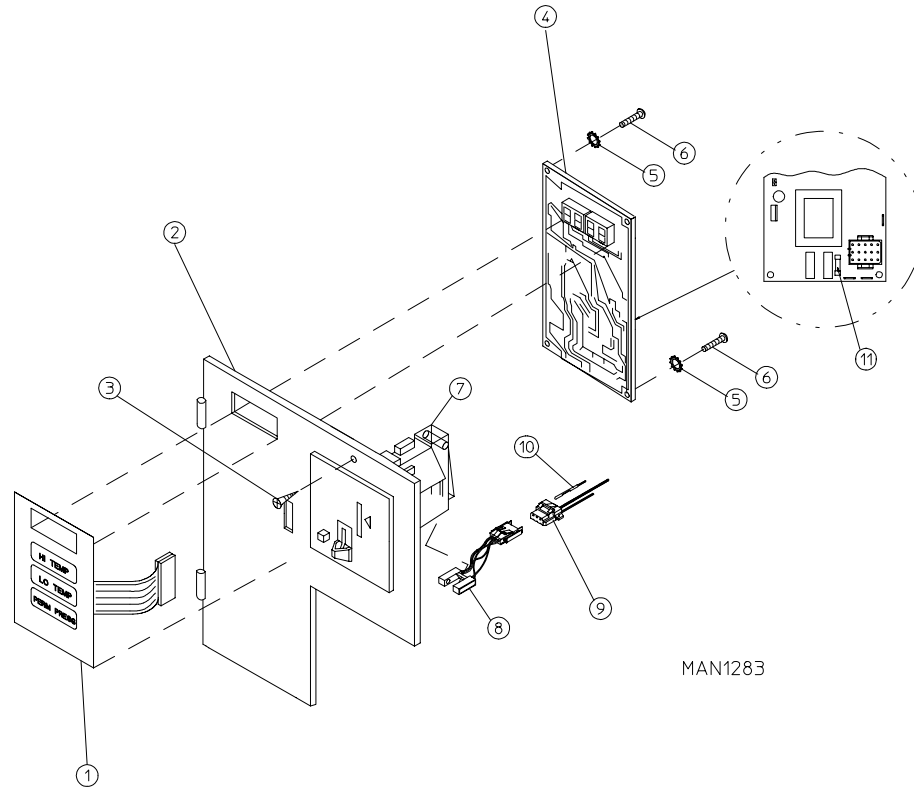
Table of Contents

AD-285 High Security Control Door Assembly	2
Phase 5 Coin Microprocessor Control Panel Assembly	3
Phase 5 OPL Microprocessor Control Panel Assembly	4
Phase 5 Coin and OPL Microprocessor Control Box Assembly	5
Dual Timer Control Panel Assembly	6
Dual Timer Control Box Assembly	7
Non-Microprocessor Control Panel Assembly	8
Non-Microprocessor Control Box Assembly	9
Coin Meter Replacement Parts	10
AD-285 Coin Vault Assembly	11
Main Door Assembly	12
Main Door Switch Assembly	13
Front Panel Assembly	14
AD-285 Lint Trap Assembly	15
AD-285 Drop Lint Door Assembly	16
AD-285 Basket (Tumbler)/Support Assemblies	17
Tumbler Bearing Assembly	18, 19
Idler Bearing Assembly	20, 21
AD-285 Totally Enclosed, Fan-Cooled (T.E.F.C.) Motor Mount Assembly	22, 23
Sensor Bracket Assemblies	24, 25
ADG-285 Direct Spark Ignition (DSI) Burner Assembly	26, 27
ADG-285 Sail Switch/Hi-Limit Assemblies	28, 29
Single Phase Motor, Electric Relay Panel Assembly	30
3-Phase Motor, Electric Relay Panel Assembly	31
ADG-285 Outer Top/Back Guard Assemblies	32
Microprocessor Coin Acceptor Listing	33
ADG-285 Step Down Transformer Listing	34
Additional Parts Available	35



<u>Illus. No.</u>	<u>Part No.</u>	<u>Qty.</u>	<u>Description</u>
1	160015	1	High Security MK-100 Lock Assembly with Key (for Coin Models ONLY)
	160104	1	MK-100 Key ONLY
	160017	1	Special Dummy Lock ONLY (for Non-Coin Models ONLY)
2	160016	1	Lock Cam ONLY
3	881053	1	ADC Logo with Tape
	870011	1	Double Sided Tape Kit
4	800019*	1	AD-285 High Security Control Door Assembly Less Lock (includes illus. nos. 4 through 7)
	800143	1	AD-285 High Security Stainless Steel Control Door Assembly Less Lock (includes illus. nos. 4 through 7)
5	180203	1	AD-285 Top Gray Trim Strip with Lock Hole
6	117603	3	Suppressor Tape/Gasket (sold in feet)
7	150201	5	#10-32 x 1/4" Phillips Round Head Machine Screw
8	150300	4	#10 x 1/2" Hex Washer TEK Screw
9	102600	1	Control Door Support Rod Catch
10	102601	1	Control Door Rod Retainer Clip
11	102503	1	Control Door Support Rod

* Specify color when ordering.

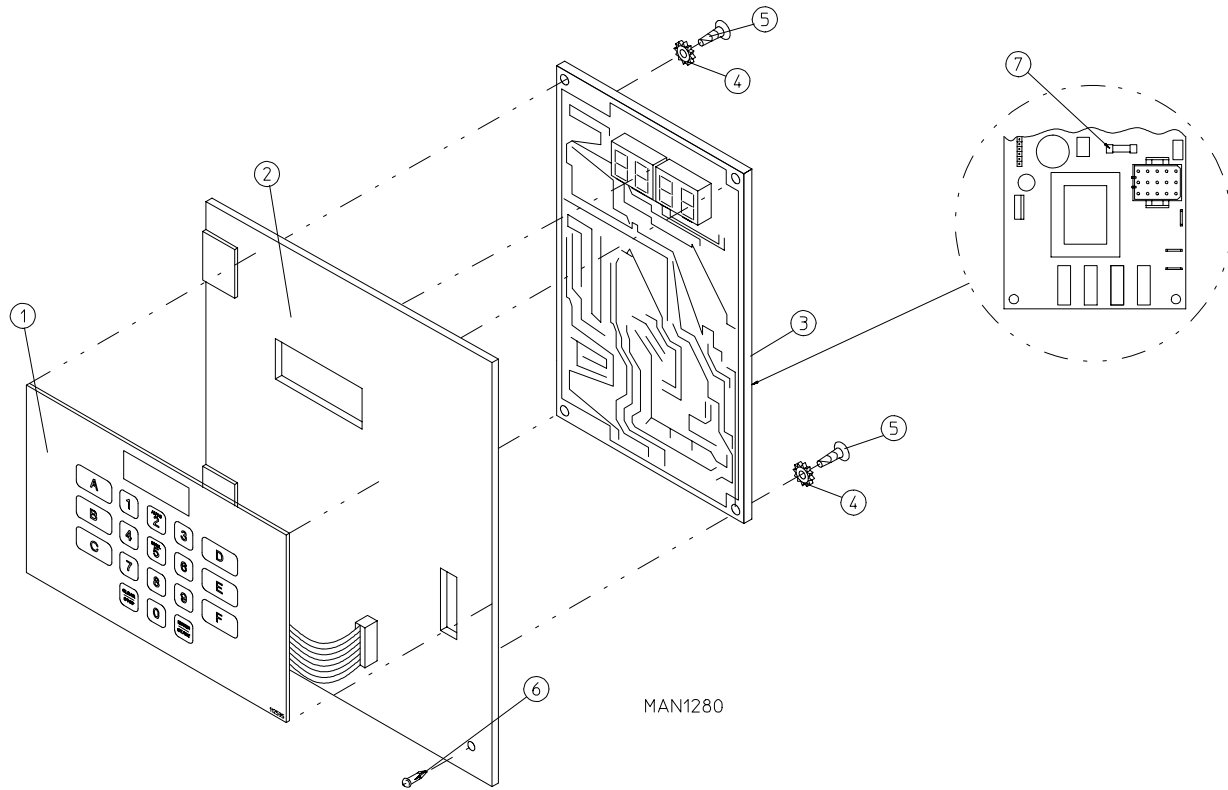


MAN1283

<u>Illus. No.</u>	<u>Part No.</u>	<u>Qty.</u>	<u>Description</u>
1	112526	1	Coin Keyboard Label Assembly
2	801213	1	Phase 5 Coin Control Panel Assembly (includes illus. nos. 1, 2, 4, 5, 6, and 11)
	801229	1	Phase 5 Coin Control Panel Assembly with Battery Option (includes illus. nos. 1, 2, 4, 5, 6, and 11)
	801259	1	Coin Control Panel ONLY
	801258	1	Coin Control Panel with Battery Bracket
3	150415	1	#10-16 x 1/2" Phillips Round Head CrimpTite Screw
4	137213	1	Phase 5 Coin Controller ONLY
	824998	1	Phase 5 Battery Clip
5	153010	2	#6 Star Washer
6	150005	2	#6-32 x 1/4" Phillips Round Head Machine Screw
7	-----	1	Microprocessor Coin Acceptor with Optical Switch (refer to Microprocessor Coin Acceptor Listing on page 33)
8*	137056	1	Optic Switch ONLY
9*	137023	1	Optic Switch Connector ONLY
10	137021	3*	Microprocessor Socket ONLY
	880772	1	Single Coin Optical Switch Harness
	824080	1	Dual Coin Optical Switch Harness
	122800	1	Microprocessor (female) Pin Extraction Tool
11	136048	1	1/8-Amp (Slo Blo) Fuse ONLY

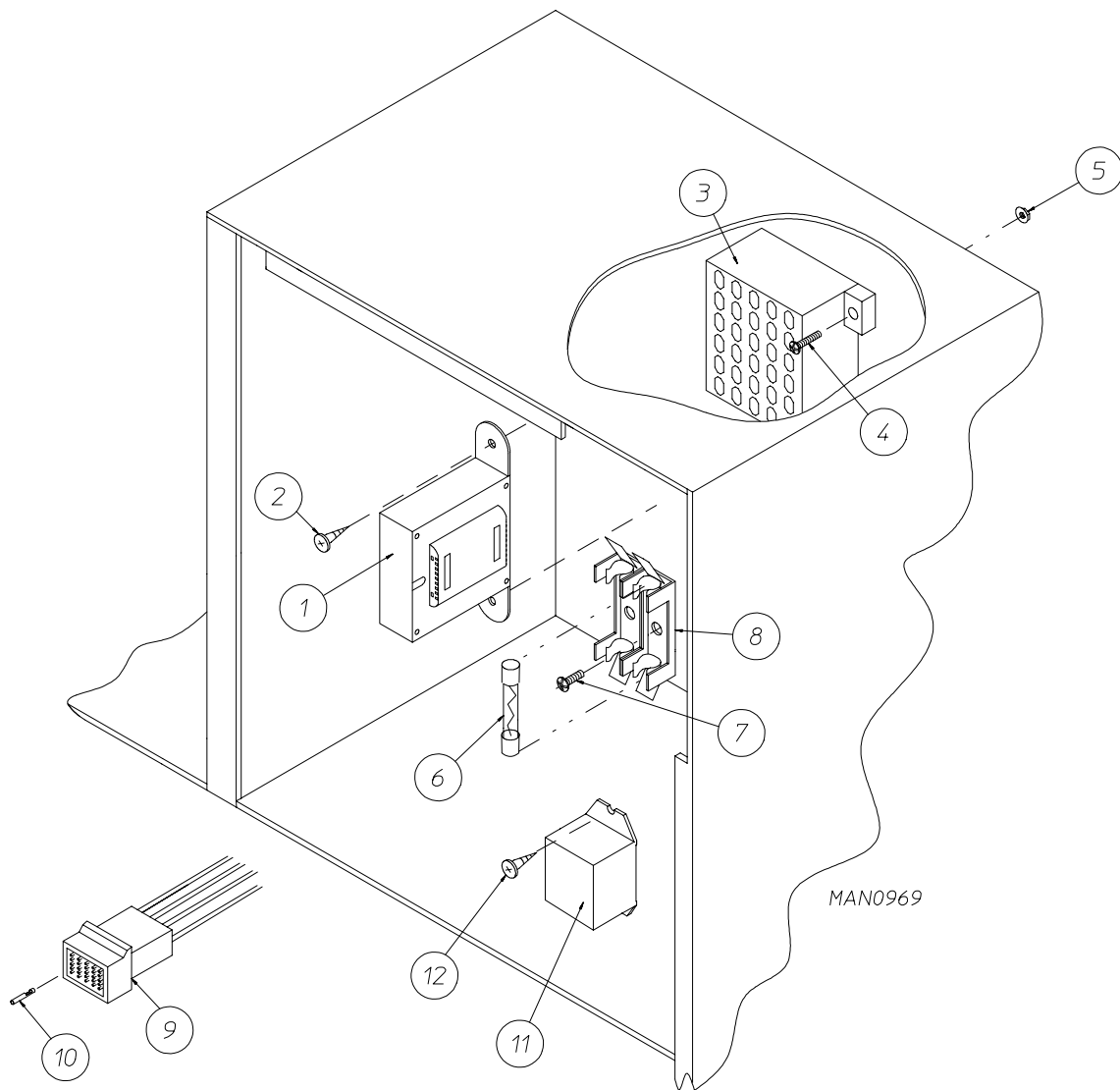
* For Dual Coin Models, double the quantity.

IMPORTANT: Check label on computer chip to verify correct part number of controller.



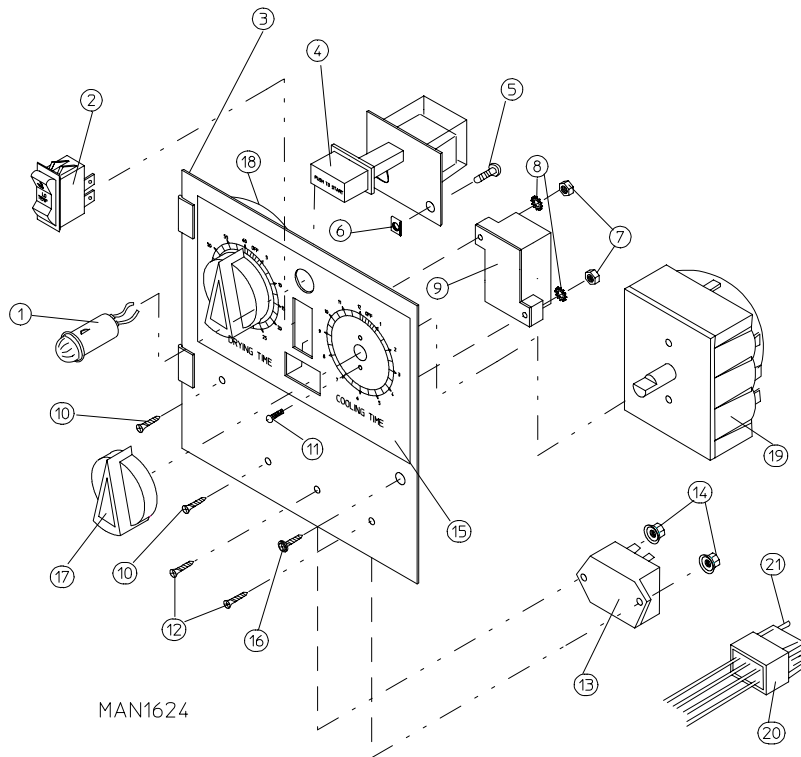
<u>Illus. No.</u>	<u>Part No.</u>	<u>Qty.</u>	<u>Description</u>
1	112535	1	OPL English Keyboard Label Assembly
	112276	1	OPL Stick-on-Labels (English Only) ... Not Illustrated
	112275	1	OPL Stick-on-Labels (Spanish, Italian, and Hebrew) ... Not Illustrated
	112277	1	3-Language OPL Stick-on-Labels (English, Spanish, and Hebrew) ... Not Illustrated
	112278	1	5-Language OPL Stick-on Labels (Italian, Dutch, French, German, and Chinese) ... Not Illustrated
2	801255	1	Phase 5 Microprocessor Control Panel ONLY
	801256	1	Phase 5 Microprocessor Control Panel ONLY with Battery Bracket Complete
	801206	1	Phase 5 OPL Non-Reversing Microprocessor Control Panel Assembly (includes illus. nos. 1 through 7)
3	137222	1	Phase 5 OPL Non-Reversing Controller ONLY
	824998	1	Phase 5 Battery Clip
4	153010	2	#6 Star Washer
5	150005	2	#6-32 x 3/4" Phillips Round Head Machine Screw
6	150415	1	#10-16 x 1/2" Phillips Round Head CrimpTite Screw (for models mfd. as of March 1, 1994)
	160005	1	Spring Turn Latch (2-piece) For models mfd. prior to March 1, 1994
7	136048	1	1/8-Amp (Slo Blo) Fuse ONLY

IMPORTANT: Check label on computer chip to verify correct part number for controller.

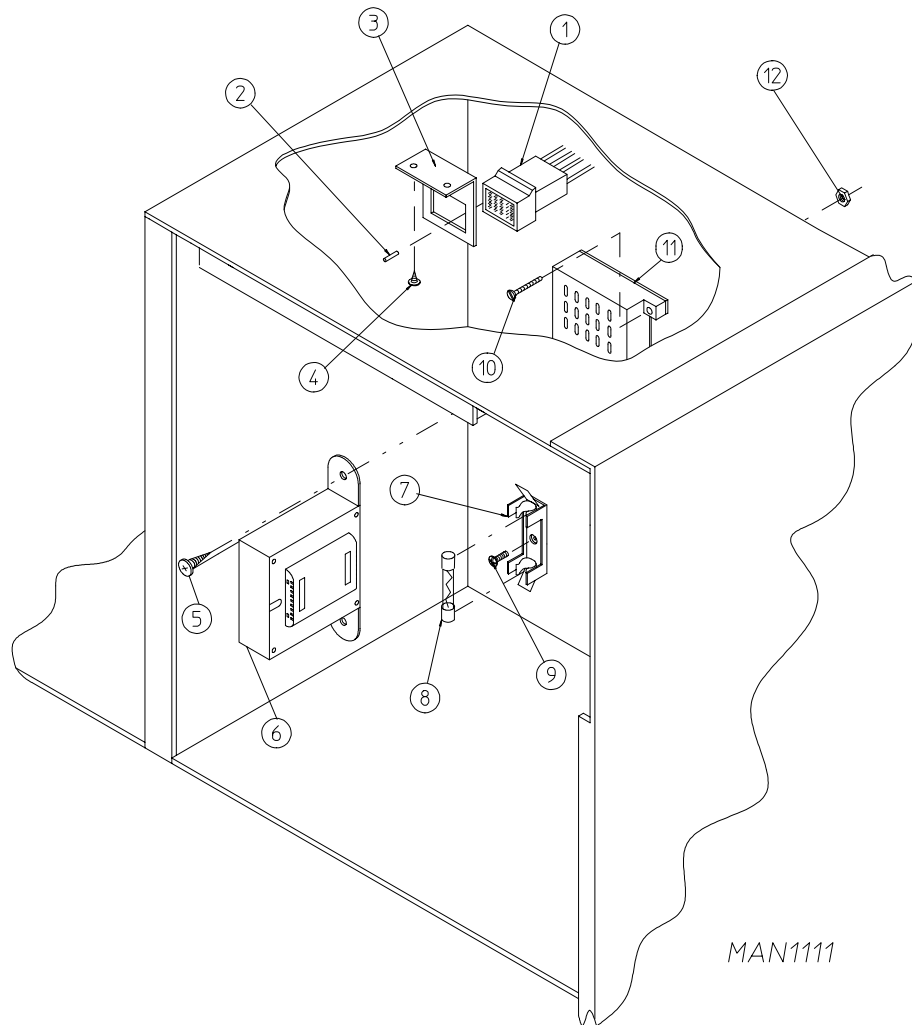


<u>Illus. No.</u>	<u>Part No.</u>	<u>Qty.</u>	<u>Description</u>
1	-----	1	Step Down Transformer (refer to ADG-285 Step Down Transformer Usage Listing on page 34)
2	150300	2	#10 x 1/2" Hex Washer TEK Screw
3	120715	1	30-Position Terminal Block
4	150002	2	#6-32 x 1" Slotted Round Head Machine Screw
5	151000	2	#6-32 Pal Nut
6	136057	*	1/2-Amp (Slo Blo) Fuse
7	150301	*	#8 x 7/16" Phillips Pan Head TEK Screw
8	136008	*	Fuse Block/Strip ONLY
9	122641	1	15-Pin Microprocessor Connector
10	122706	*	Socket Terminal ONLY

* As required.



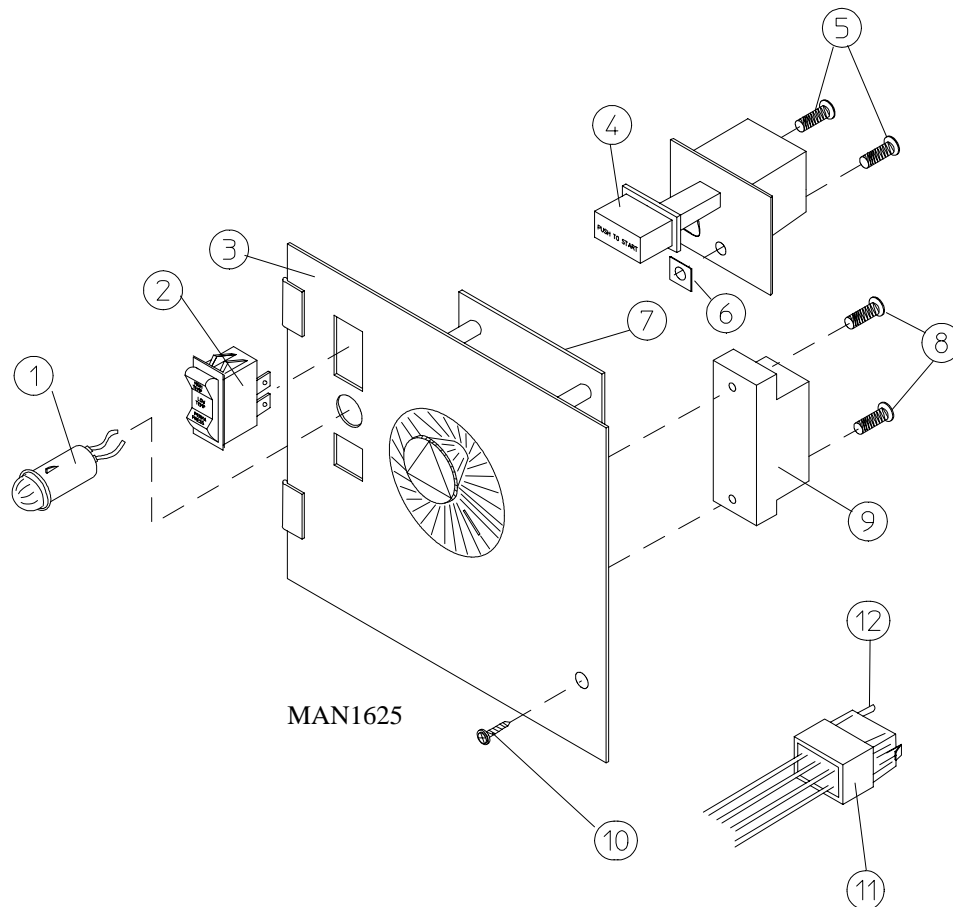
<u>Illus. No.</u>	<u>Part No.</u>	<u>Qty.</u>	<u>Description</u>
1	123005	1	Red Indicator Light - 24 VAC
2	122400	1	Rocker Heat Selector Switch
3	824015	1	Dual Timer Control Panel Assembly Complete - 24 VAC (includes illus. nos. 1 through 21)
	800051	1	Dual Timer Control Panel ONLY
4	131917	1	Push-to-Start Relay - 24 VAC
5	150207	2	#10-24 x 1/2" Round Head Machine Screw
6	154001	2	#10-24 Speed Nut
7	152000	2	#6-32 Hex Nut, 5/16" ATF
8	153010	2	#6 Star Washer
9	120713	1	18-Position Terminal Block
10	150002	2	#6-32 x 1" Round Head Machine Screw
11	150110	4	#8-32 x 1/4" Phillips Machine Screw
12	150001	2	#6-32 x 1/2" Round Head Machine Screw
13	131931	1	Dual Timer Relay - 24 VAC
14	151000	2	#6-32 Pal Nut
15	112050	1	Dual Timer Label ONLY
16	150415	1	#10-16 x 1/2" Phillips Round Head Crimpite Screw (for models mfd. as of March 1, 1994)
17	124103	2	Arrow Timer Knob
18	124025	1	60-Minute Timer - 24 VAC
19	124030	1	15-Minute Timer - 24 VAC
20	122602	1	9-Pin Connector ONLY
21	122700	8	Pin Terminal ONLY
---	122801	1	Pin/Socket Extraction Tool



<u>Illus. No.</u>	<u>Part No.</u>	<u>Qty.</u>	<u>Description</u>
1	122603	1	9-Pin Socket Connector
2	122701	8	Socket Terminal ONLY
	122801	1	Pin/Socket Extraction Tool
3	315010	1	9-Pin Connector Bracket
4	150300	2	#10 x 1/2" Hex Washer TEK Screw
5	150300	2	#10 x 1/2" Hex Washer TEK Screw
6	-----	1	Step Down Transformer (refer to ADG-285 Step Down Transformer Usage Listing on page 34)
7	136008	*	Fuse Block/Strip ONLY
8**	136057	*	1/2-Amp (Slo Blo) Fuse
9	150301	*	#8-18 x 7/16" Phillips Pan Head TEK Screw
10	150002	2	#6-32 x 1" Slotted Round Head Machine Screw
11	120715	1	30-Position Terminal Block
12	151000	2	#6-32 Pal Nut

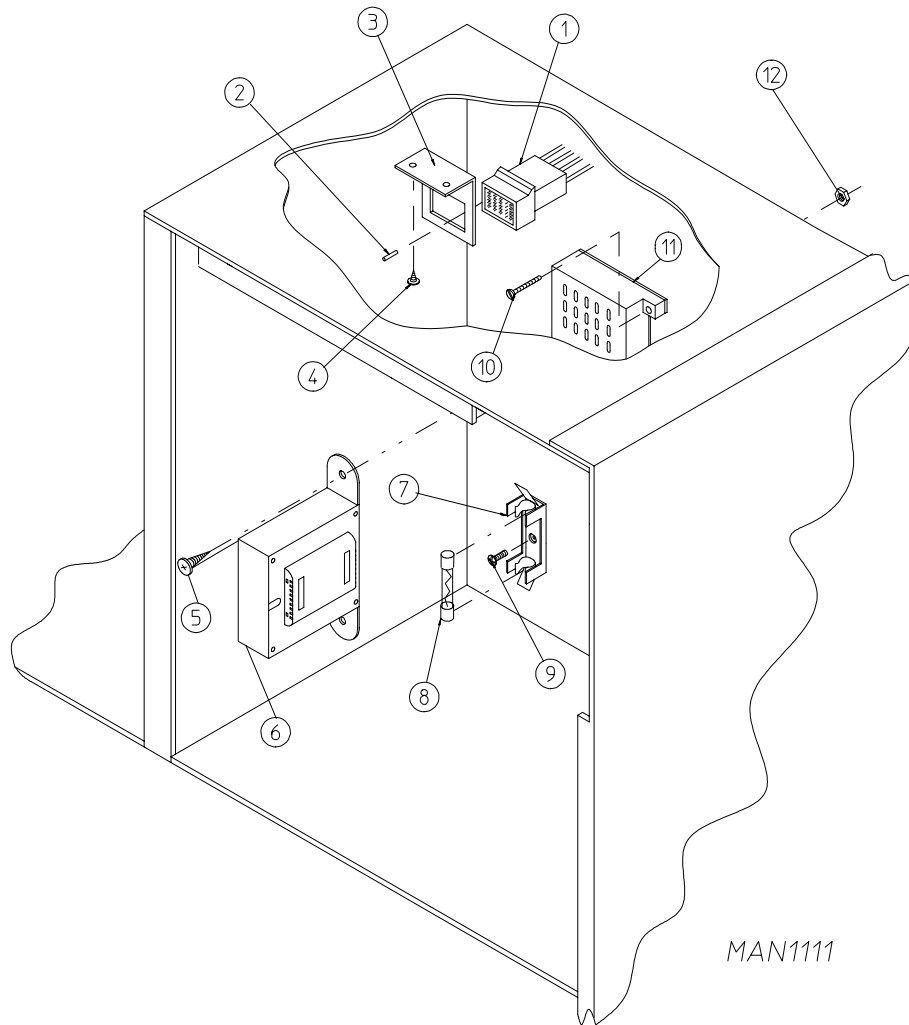
* As required.

** Check fusing on dryer for verification.



<u>Illus. No.</u>	<u>Part No.</u>	<u>Qty.</u>	<u>Description</u>
1	123005	1	Red Indicator Light - 24 VAC
2	122400	1	Rocker Heat Selector Switch
3	824020	1	Coin Meter Control Panel Assembly Complete less Meter - 24 VAC (includes illus. nos. 1 through 6 and 8 through 12)
	800054	1	Coin Meter Control Panel ONLY
4	131917	1	Push-to-Start Relay - 24 VAC
5	150207	2	#10-24 x 1/2" Round Head Machine Screw
6	154001	2	#10-24 Speed Nut
7*	125601	1	25¢ Coin Meter - 24 VAC (Specify Timing)
8	150303	2	#4 x 3/4" Pan Head "A" Screw
9	120712	1	12-Position Terminal Block
10	150415	1	#10-16 x 1/2" Phillips Round Head Crimpite Screw (for models mfd. as of March 1, 1994)
	160005	1	Spring Turn Latch (2-piece) (for models mfd. as of March 3, 1994)
11	122602	1	9-Pin Connector ONLY
12	122700	9	Pin Terminal ONLY
---	122801	1	Pin/Socket Extraction Tool

* Consult factory for coin meters not listed.

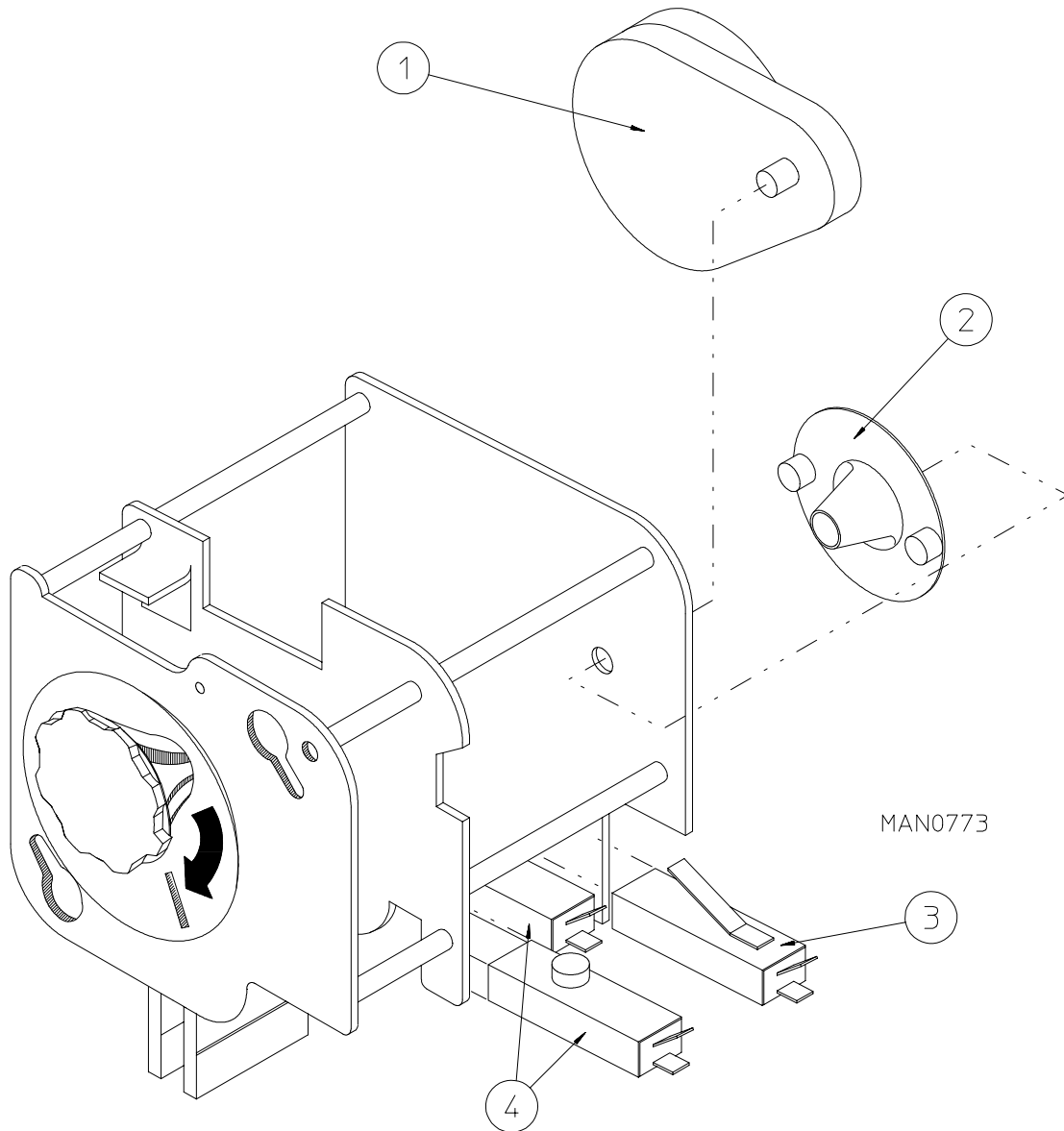


MAN1111

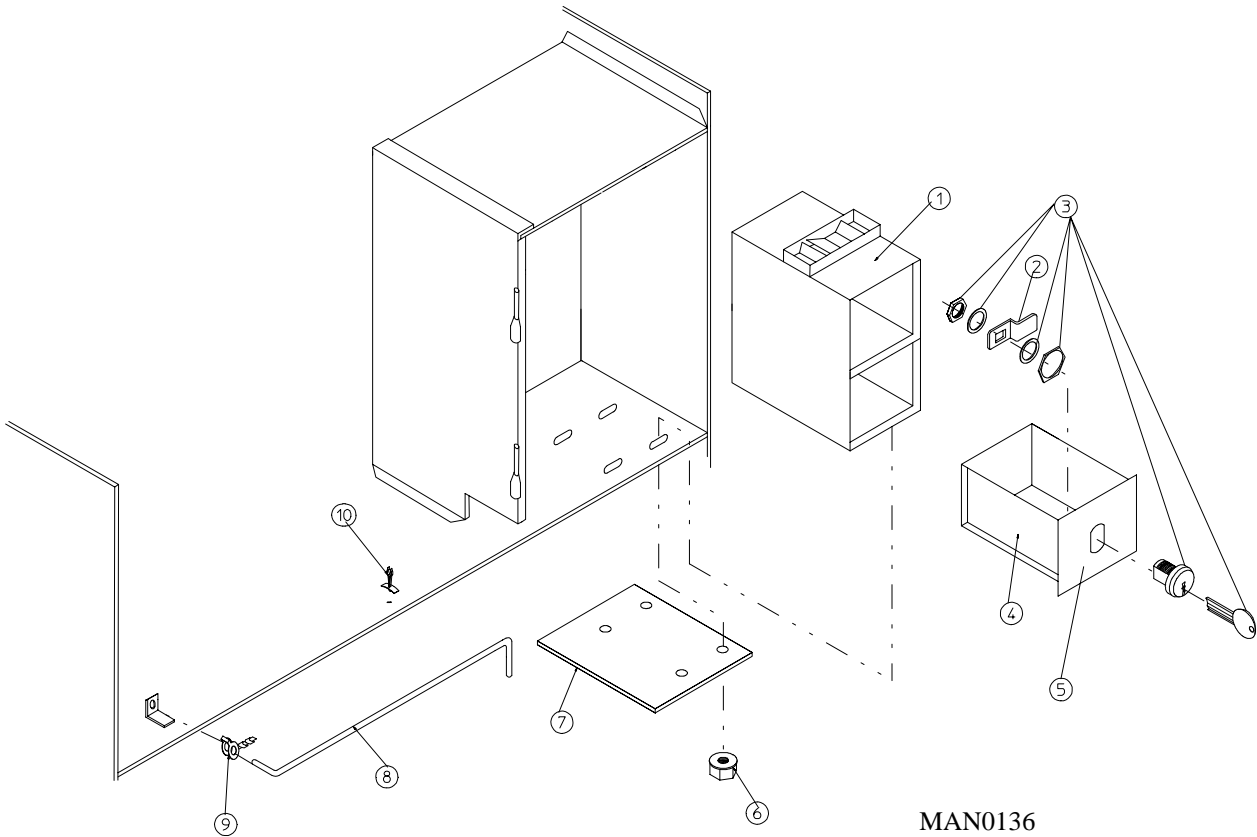
<u>Illus. No.</u>	<u>Part No.</u>	<u>Qty.</u>	<u>Description</u>
1	122603	1	9-Pin Socket Connector
2	122701	8	Socket Terminal ONLY
	122801	1	Pin/Socket Extraction Tool
3	315010	1	9-Pin Connector Bracket
4	150300	2	#10 x 1/2" Hex Washer TEK Screw
5	150300	2	#10 x 1/2" Hex Washer TEK Screw
6	-----	1	Step Down Transformer (refer to ADG-285 Step Down Transformer Usage Listing on page 34)
7	136008	*	Fuse Block/Strip ONLY
8**	136057	*	1/2-Amp (Slo Blo) Fuse
9	150301	*	#8-18 x 7/16" Phillips Pan Head TEK Screw
10	150002	2	#6-32 x 1" Slotted Round Head Machine Screw
11	120715	1	30-Position Terminal Block
12	151000	2	#6-32 Pal Nut

* As required.

** Check fusing on dryer for verification.

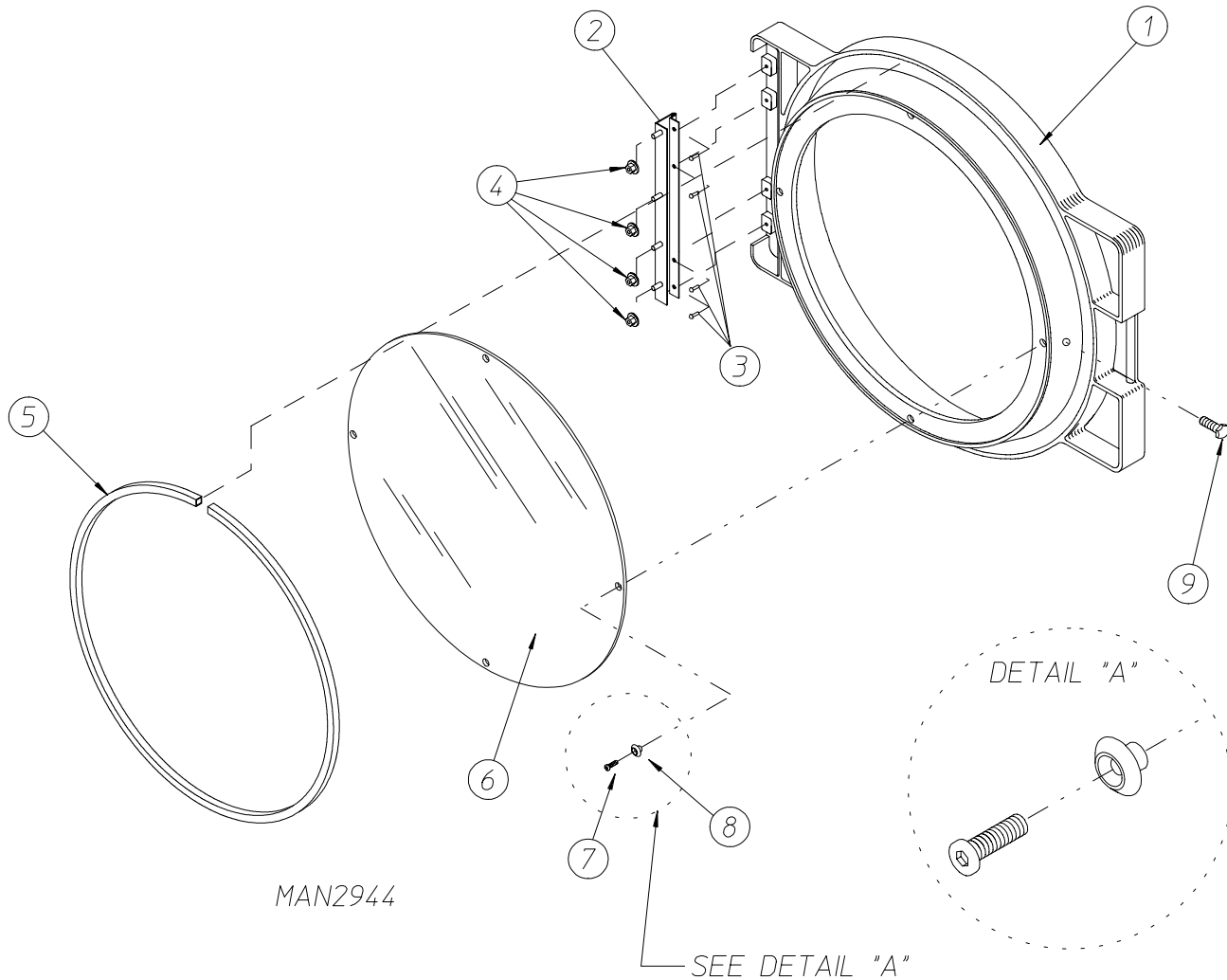


<u>Illus. No.</u>	<u>Part No.</u>	<u>Qty.</u>	<u>Description</u>
1	125541	1	1/60 RPM 24 VAC / 60 Hz Meter Motor
	125540	1	1/30 RPM 24 VAC / 50 Hz Meter Motor
2	125500	1	2-Point Cam
	125501	1	3-Point Cam
	125502	1	4-Point Cam
	125503	1	5-Point Cam
	125504	1	6-Point Cam
	125506	1	8-Point Cam
	125507	1	9-Point Cam
	125508	1	10-Point Cam
	125510	1	12-Point Cam
	3	125515	1
4	125516	2	Meter Switch "A" or "C"

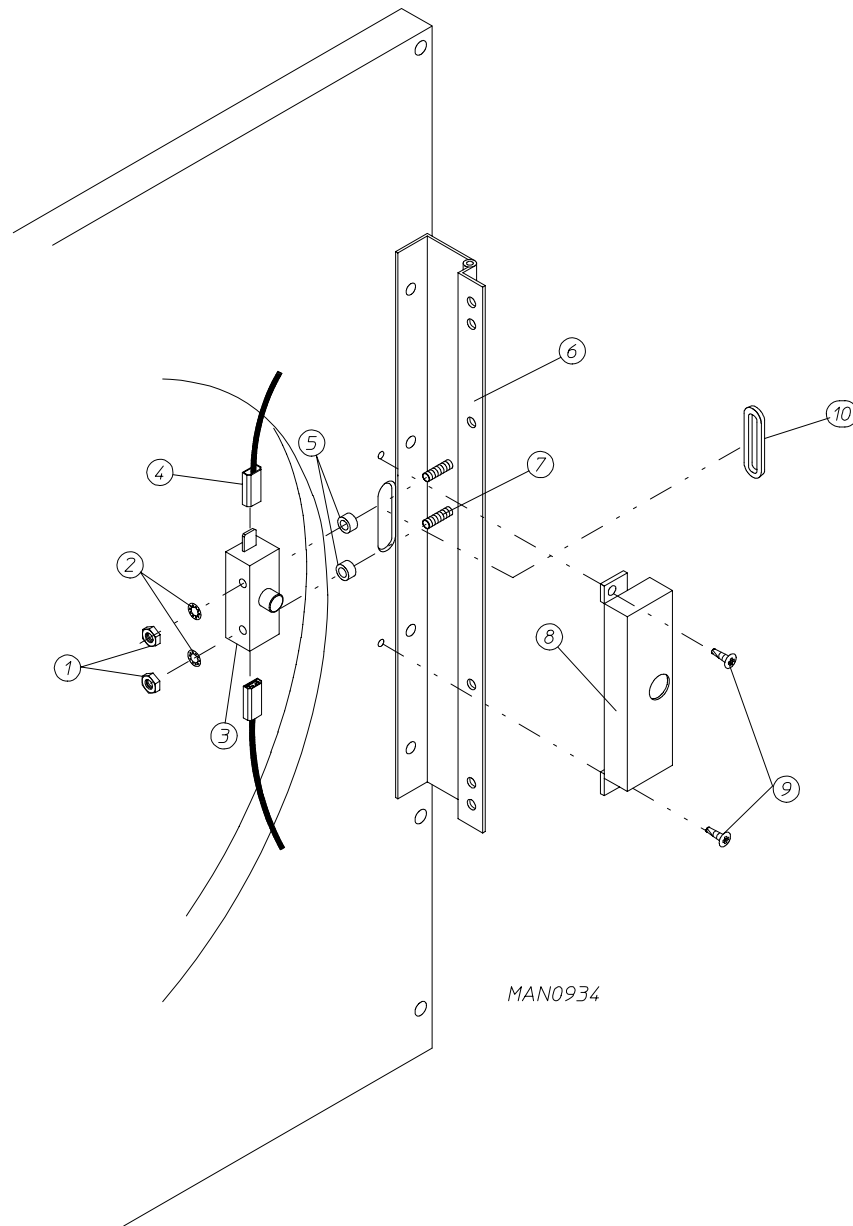


<u>Illus. No.</u>	<u>Part No.</u>	<u>Qty.</u>	<u>Description</u>
1	802131	1	AD-285 Microprocessor Coin Vault Assembly Complete (includes illus. nos. 1 through 6)
	802130	1	AD-285 Non-Microprocessor Coin Vault Assembly Complete (includes illus. nos. 1 through 6)
	802121	1	AD-285 Microprocessor Coin Vault ONLY
	802120	1	AD-285 Non-Microprocessor Coin Vault ONLY
2	160006	1	Cam for 1/4-Turn Lock ONLY
3	875061	1	1/4-Turn Lock Assembly (includes illus. nos. 2 and 3)
	160007	1	1/4-Turn Lock with Key ONLY
	160105*	1	1/4-Turn Mer-Pel Key ONLY
4	802020	1	1/4-Turn Coin Box Assembly (includes illus. nos. 2 through 5)
	802019	1	1/4-Turn Coin Box ONLY without Faceplate
5	802018	1	1/4-Turn Coin Box Faceplate ONLY
6	152014	4	1/4-20 Free Spin Wash Nut
7	309250	1	AD-285 Coin Vault Slot Cover
8	102503	1	AD-285 Control Door Support Rod
9	102601	1	Control Door Rod Retainer Clip
10	102600	1	Control Door Support Rod Catch

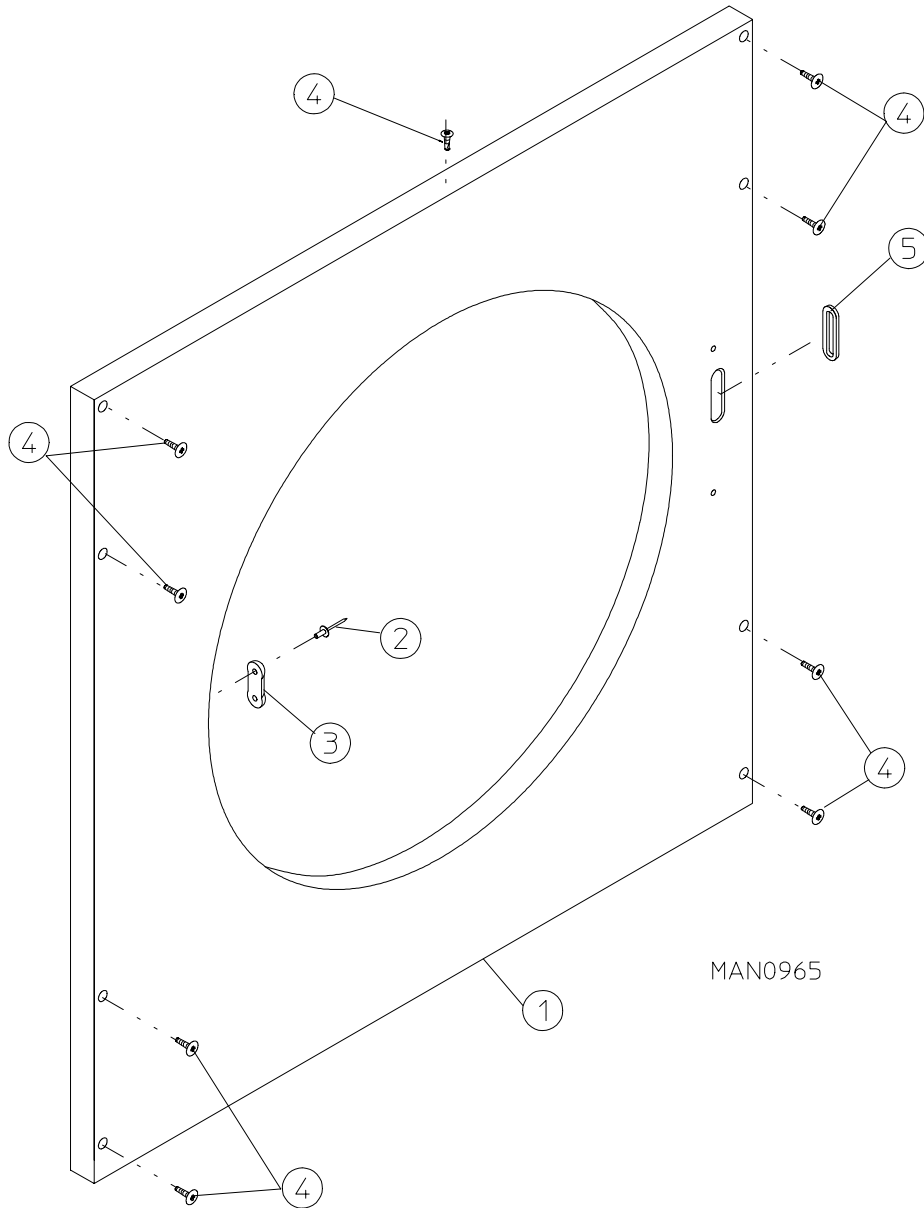
* Specify key number when ordering.



<u>Illus. No.</u>	<u>Part No.</u>	<u>Qty.</u>	<u>Description</u>
1	881422	1	Black Plastic Main Door Assembly Complete with Mechanical Fasteners (includes illus. nos. 1 and 5 through 9)
2	800448	1	12-1/2" Stainless Steel Main Door Hinge Assembly
3	150410	4	#10-24 x 3/8" Phillips Pan Head Taptite Screw
4	152014	4	1/4-20 Free Spin Wash Nut
5	102349	1	Main Door Gasket
6	102212	1	20-7/16" Door Glass with (4) Holes
	170730	1	Main Door Glass Adhesive (10.3 oz. Cartridge)
7	150448	4	1/2" Stainless Steel Flat Head Allen Screw
8	170319	4	Door Glass (Nylon) Spacer
9	150431	1	Main Door Latch Screw (#10 x 7/16" Dome Hex Head)

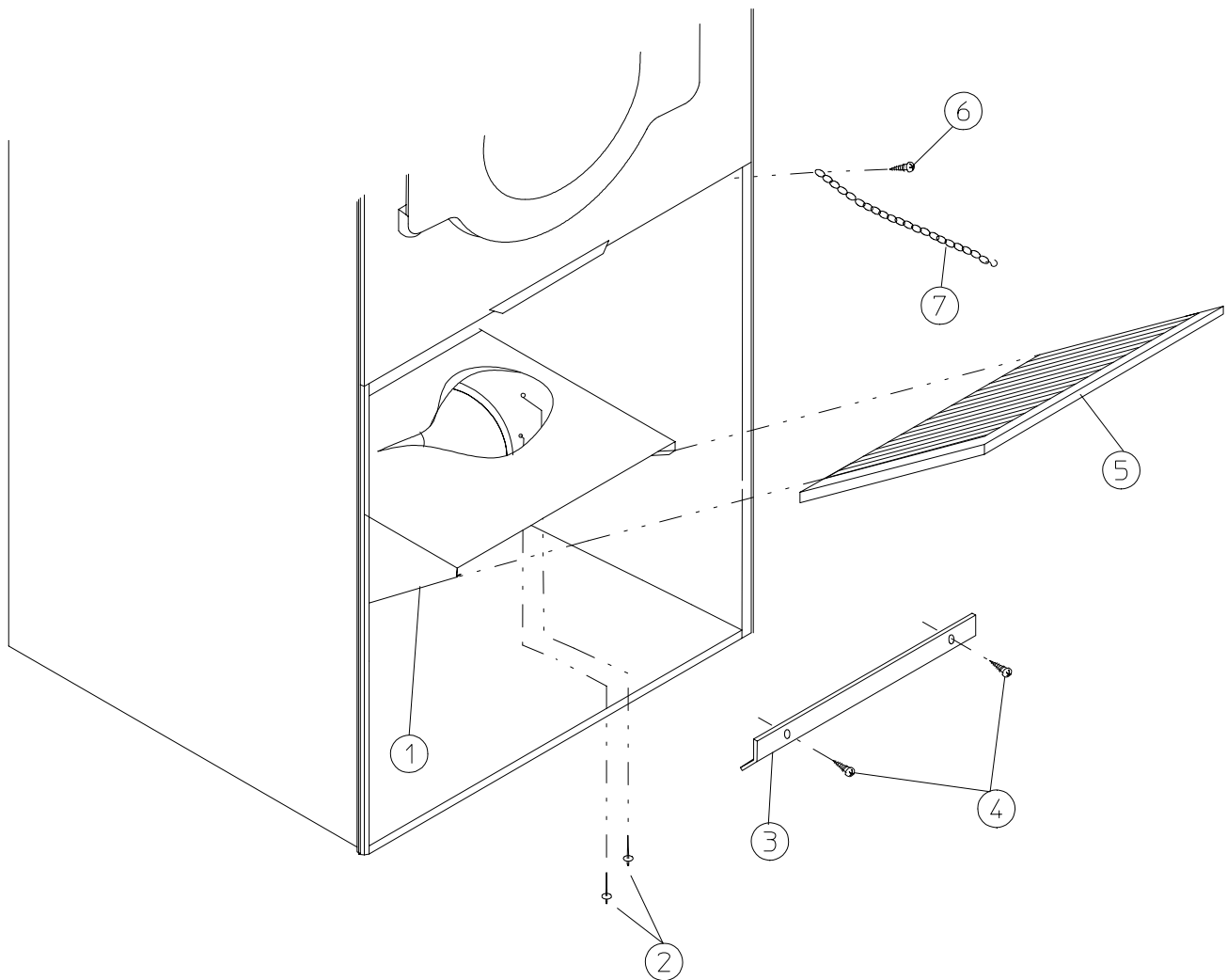


<u>Illus. No.</u>	<u>Part No.</u>	<u>Qty.</u>	<u>Description</u>
1	152013	2	#6-32 Hex Nut
2	153008	2	#6 Lock Washer
3	137005	1	Single Pole Door Switch
4	121028	2	Insulated Female Terminal
5	154281	2	3/8" Standard Nylon Spacers
6	800448	1	12-1/2" Stainless Steel Main Door Hinge
7	153565	2	#6 Stud
8	881246	1	Main Door Switch Housing ONLY
9	150201	2	#10-32 x 1/4" Phillips Pan Head Screw
10	121405	1	Rubber Grommet



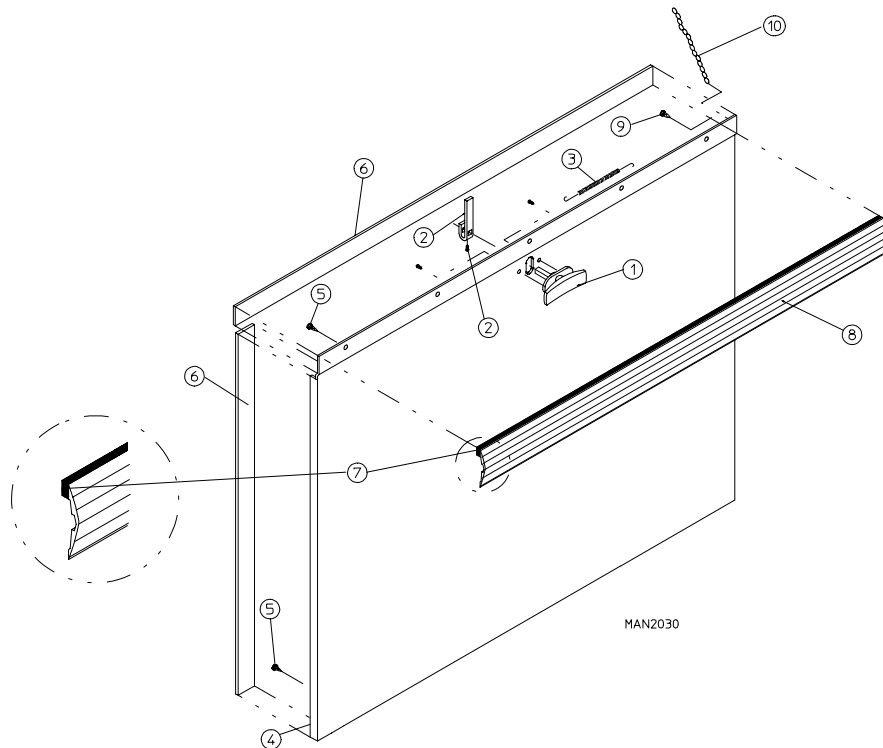
<u>Illus. No.</u>	<u>Part No.</u>	<u>Qty.</u>	<u>Description</u>
1	800676*	1	AD-285 Front Panel Assembly Complete with Hinge (includes illus. nos. 1, 2, 3, and 6)
	800677	1	AD-285 Stainless Steel Upper Front Panel Assembly Complete with Hinge (includes illus. nos. 1, 2, 3, and 6)
2	154215	2	5/32" Pop Rivet
3	170330	1	Friction Door Latch
4	112350	1	ADC Logo ONLY
	870011	--	Logo Double Sided Tape Kit
5	150415	8	#10-16 x 1/2" Phillips Round Head Crimptite Screw
6	121405	1	Rubber Grommet

* Specify color when ordering.



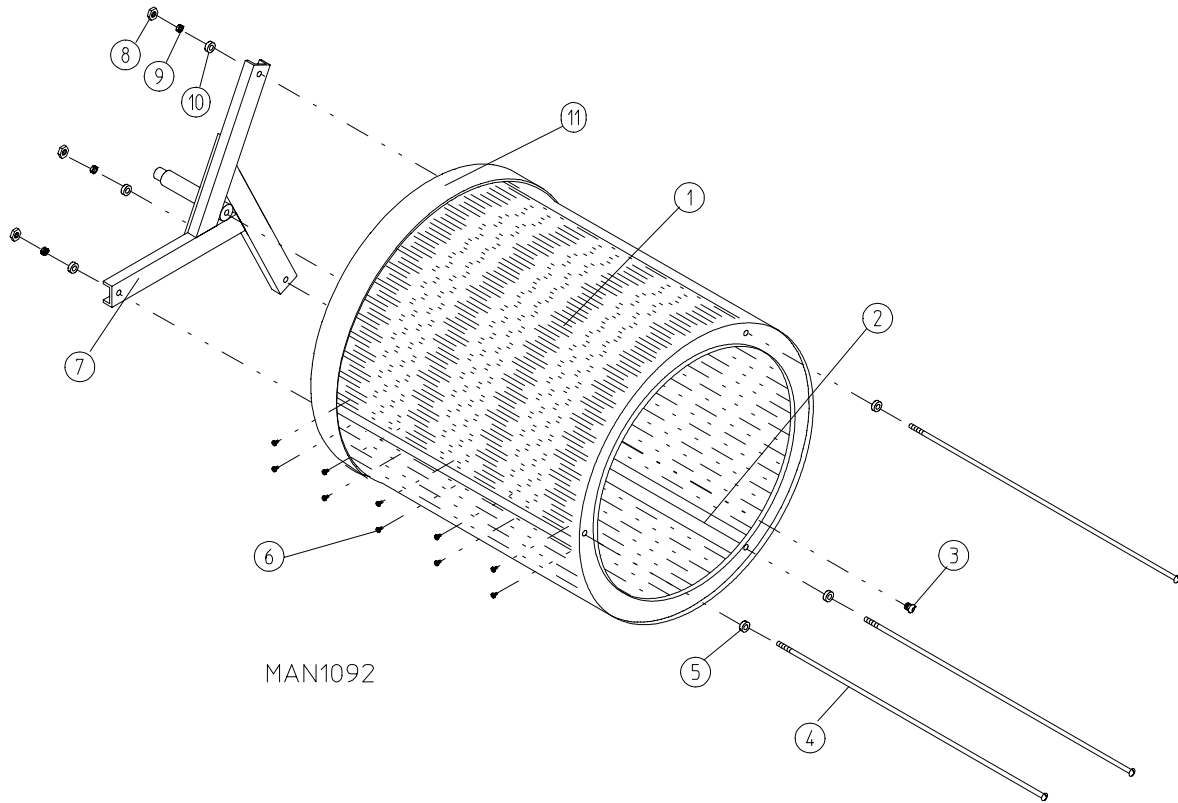
MAN0107

Illus. No.	Part No.	Qty.	Description
1	800410	1	AD-285 Lint Trap Assembly Complete (includes illus. nos. 1, 3, 4, and 5)
	800411	1	AD-285 Lint Trap ONLY
2	154200	7	5/32" Pop Rivet
3	304102	1	Lint Screen Holder ONLY
4	150300	3	#10 x 1/2" Hex Washer TEK Screw
5	800503	1	AD-285 Lint Screen ONLY
6	150419	2	#6 x 1/2" Tamperproof Screw
7	108120	1	Chain for Drop Lint Door (10-1/2" length)
-	150418	1	Tamperproof Screw Hand Driver



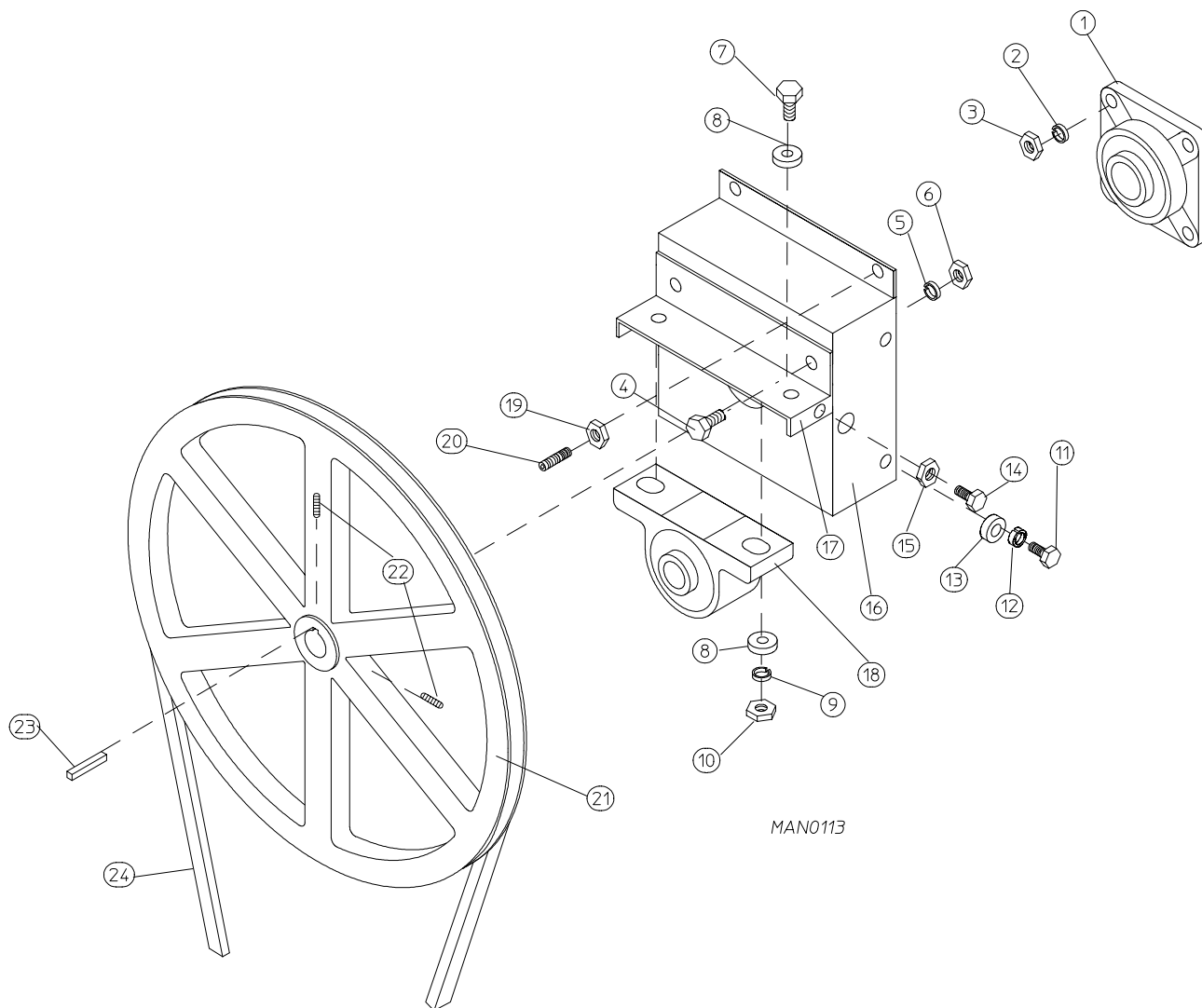
<u>Illus. No.</u>	<u>Part No.</u>	<u>Qty.</u>	<u>Description</u>
1	160001	1	AD-100 Lock Assembly with Key (for Coin Models ONLY)
	160103	1	AD-100 Key ONLY
	800150	1	Knob Latch Kit Assembly (includes illus. nos. 1 and 2)
	160200	1	Knob Latch ONLY with 2 Screws (without cam)
	160003	1	Dummy Lock ONLY (for Non-Coin Models)
	160104	1	MK-100 Key ONLY (for dummy lock)
2	160008	1	Lock Cam for AD-100 and Dummy Lock
	160009	1	Knob Latch Adjustable Cam ONLY
	150425	1	#12-24 x 3/8" Round Head Machine Screw (screw for Knob Latch Adjustable Cam)
3	157000	1	Drop Lint Door Spring
4	800234*	1	AD-285 Drop Lint Door Assembly Complete (includes illus. nos. 4 through 8)
	800244	1	AD-285 Stainless Steel Drop Lint Door Assembly Complete (includes illus. nos. 4 through 8)
5	150201	6	#10-32 x 1/4" Phillips Pan Head TEK Screw
6	117600	7	Noise Suppressor Tape (sold in feet)
7	117603	3	Suppressor Tape/Gasket (sold in feet)
			For models mfd. as of February 8, 1995
8	180213	1	AD-285 Trim / Kick Plate (28-3/8" length)
9	150419	2	#6 x 1/2" Tamperproof TEK Screw
10	108120	1	Chain for Drop Lint Door (10-1/2" length)
---	150418	1	Tamperproof Screw Hand Driver

* Specify color when ordering.



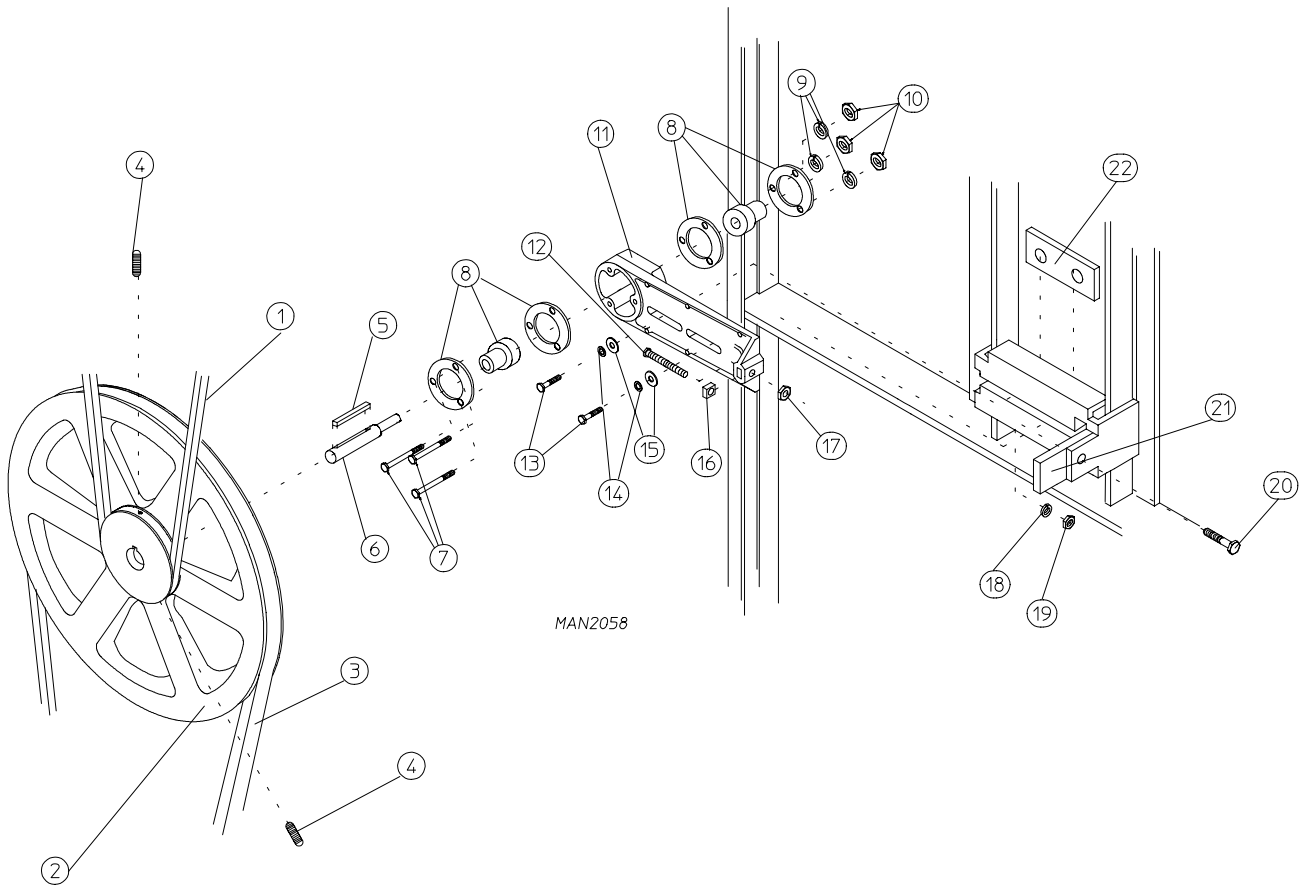
Illus. No.	Part No.	Qty.	Description
1	800830	1	AD-285 Basket/Tumbler and Support Assembly Complete with Felt Collar (includes illus. nos. 1 through 11)
	800890	1	AD-285 Stainless Steel Basket/Tumbler and Support Assembly Complete with Felt Collar (includes illus. nos. 1 through 11)
	800720*	1	AD-285 Basket/Tumbler Only without Felt Collar (includes illus. nos. 1, 2, and 6)
	800840*	1	AD-285 Stainless Steel Basket/Tumbler ONLY without Felt Collar (includes illus. nos. 1, 2, and 6)
2	301315	2	AD-285 (short) Basket/Tumbler Rib ONLY
	301316	1	AD-285 (tall) Basket/Tumbler Rib ONLY
	301414	2	AD-285 Stainless Steel (short) Basket/Tumbler Rib ONLY
	301415	1	AD-285 Stainless Steel (tall) Basket/Tumbler Rib ONLY
3	150518	1	#5/16-18 x 3/8" Socket Button Head Screw
4	100902	3	#5/16-18 x 31" Tie Rod
5	153001	3	5/16" Flat Washer
6	150415	30	#10-16 x 1/2" Phillips Round Head Crimpite Screw
7	800612	1	AD-285 Basket/Tumbler Support ONLY
8	152004	3	#5/16-18 Hex Nut
9	153002	3	5/16" Lock Washer
10	153001	3	5/16" Flat Washer
11	116003	1	Felt Collar ONLY
---	401010	1	#847 Adhesive for Felt Collar (5 oz Tube)

* Felt collar *not included* and **must be** ordered separately.



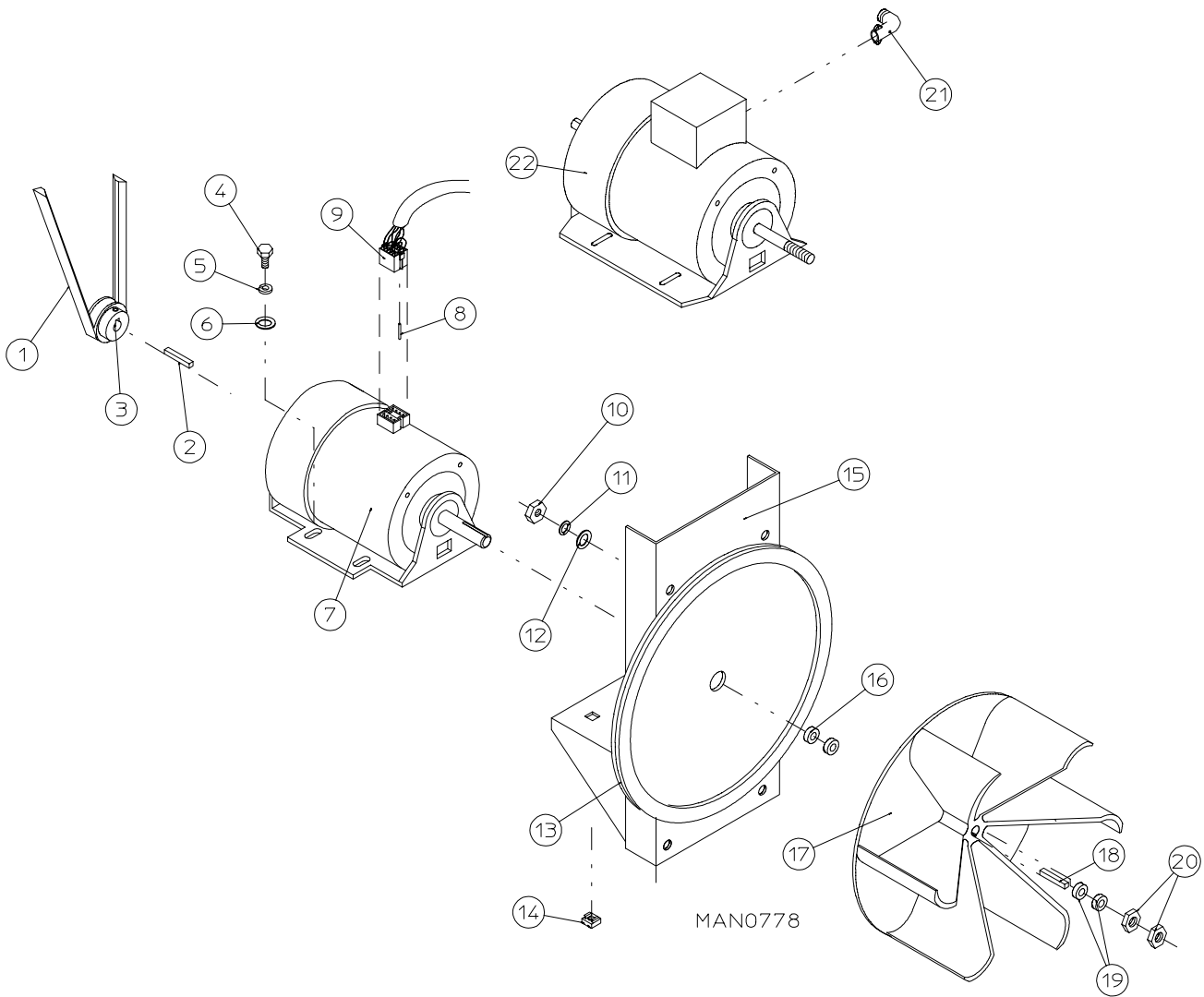
<u>Illus. No.</u>	<u>Part No.</u>	<u>Qty.</u>	<u>Description</u>
1	880203	1	1-3/8" Flange Bearing with Nylock Set Screw
2	153005	4	3/8" Lock Washer
3	152005	4	3/8-16 Hex Nut
4	150508	2	3/8-16 x 3/4" Hex Head Machine Bolt
5	153005	2	3/8" Lock Washer
6	152005	2	3/8-16 Hex Nut
7	150600	2	3/8-16 x 1/2" Hex Head Machine Bolt
8*	153004	2	3/8" Flat Washer
9	153005	2	3/8" Lock Washer
10	152005	2	3/8-16 Hex Nut
11	150501	4	5/16-18 x 3/4" Hex Head Machine Bolt
12	153002	4	5/16" Lock Washer
13	153001	4	5/16" Flat Washer
14	150621	2	5/16-18 x 1-1/2" Hex Head Machine Bolt
15	152004	2	5/16-18 Hex Nut
16	801101	1	1-3/8" Bearing Box Assembly Complete (includes illus. nos. 4 through 20) For models mfd. without Rotational Sensor
	801103	1	1-3/8" Bearing Box and Support Assembly ONLY (includes illus. nos. 4, 5, 6, 16, and 17)
	801105	1	1-3/8" Bearing Box ONLY
17	801104	1	1-3/8" Pillow Block Bearing Support ONLY
18	880202	1	1-3/8" Pillow Block Bearing ONLY
19	152004	2	5/16-18 Hex Nut
20	150610	2	5/16-18 x 1-1/2" Allen Set Screw
21	101100	1	18" Pulley
22	154301	2	#5/16-18 x 5/16" Allen Set Screw
23	100713	1	1/4" x 1/4" x 7/8" Key
24	100111	1	5L650 V-Belt (to idler assembly)

* Some models require a quantity of 4.



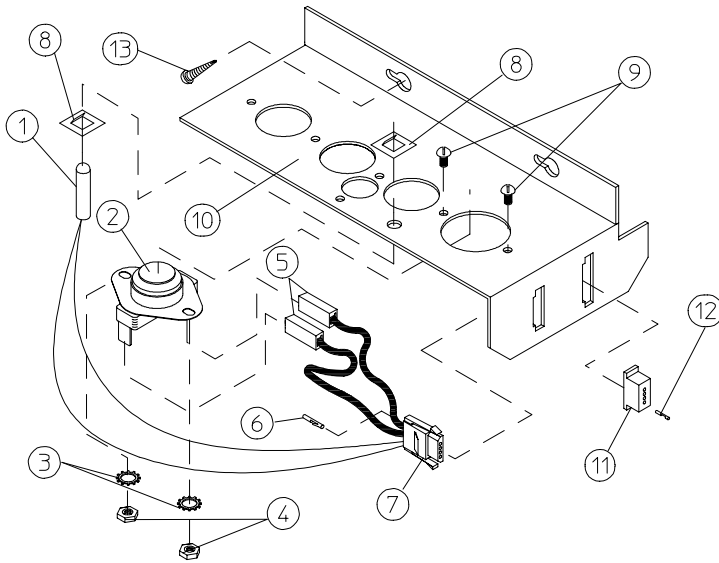
<u>Illus. No.</u>	<u>Part No.</u>	<u>Qty.</u>	<u>Description</u>
1	100111	1	5L650 V-Belt (basket/tumbler to idler)
2	101129	1	9" x 2-1/2" Compound Pulley ONLY
3	100105	1	4L520 V-Belt (idler to motor)
4	154301	2	#5/16-18 x 5/16" Allen Set Screw
5	100705	1	3/16" x 3/16" x 1-3/8" Key
6	301850	1	5/8" x 3/4" Idler Shaft ONLY
7	150529	3	#1/4-20 x 2-1/4" Carriage Bolt
8	100214	2	5/8" Flange Bearing ONLY
9	153007	3	1/4" Lock Nut
10	152002	3	#1/4-20 Hex Nut
11	801008	1	Idler Bearing Assembly Complete (includes illus. nos. 6 through 23)
12	150613	1	#5/16-18 x 4" Hex Head Machine Bolt
13	150617	2	#3/8-16 x 1" Hex Head Machine Bolt
14	153005	2	3/8" Lock Washer
15	153004	2	3/8" Flat Washer
16	152020	1	#5/16-18 Standard Square Nut
17	152004	1	#5/16-18 Hex Nut
18	152005	1	#3/8-16 Hex Nut
19	153005	1	3/8" Lock Washer
20	150617	1	#3/8-16 x 1" Hex Head Machine Bolt
21	301851	1	Idler Bracket Adjustment Plate
22	801009	1	Idler Square Washer

22 AD-285 Totally Enclosed, Fan-Cooled (T.E.F.C.) Motor Mount Assembly



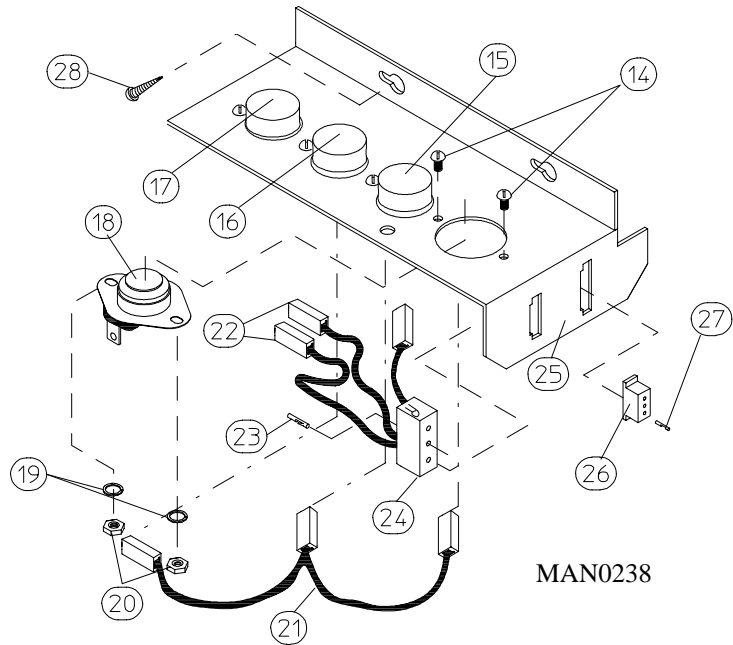
<u>Illus. No.</u>	<u>Part No.</u>	<u>Qty.</u>	<u>Description</u>
1	100105	1	4L520 "V" Belt (to idler assembly)
2	100701	1	3/16" x 3/16" x 1" Key (for use on 3 ϕ Models ONLY)
3	101131	1	1/2" x 2-1/4" Motor Pulley (for use on 1 ϕ 60 Hz Motors ONLY)
	101133	1	5/8" x 2-1/4" Motor Pulley (for use on 3 ϕ 60 Hz Motors ONLY)
	101130	1	5/8" x 2-1/2" Motor Pulley (for use on 1 ϕ /3 ϕ 50 Hz Motors ONLY)
4	150501	4	#5/16-18 x 3/4" Hex Head Machine Bolt
5	153002	4	5/16" Lock Washer
6	153001	4	5/16" Flat Washer
7	100065*	1	1/2 HP 100-230v 1 ϕ 50/60Hz T.E.F.C. Plug-Type Motor
	100066	1	1/2HP 240v 1 ϕ 50Hz T.E.F.C. Plug-Type Motor (for models mfd. as of August 28,1992)
8	122701	8	Socket Terminal ONLY
	122801	1	Pin/Socket Extraction Tool
9	137030	1	8-Pin Housing Connector
10	152004	4	#5/16-18 Hex Nut
11	153002	4	5/16" Lock Washer
12	153001	4	5/16" Flat Washer
13	117600	4	Noise Suppressor Tape (sold in feet)
14	154000	4	#5/16-18 Tinnerman Nut
15	800909	1	1/2 HP Motor Mount Only (56Z Frame)
	803966*	1	1/2 HP 115-230v 1 ϕ 50/60Hz T.E.F.C. Motor Mount Assembly Complete with Plug Motor (includes illus. nos. 3 through 7 and 13 through 20)
	803965*	1	1/2 HP 208/230/380/460v 3 ϕ 60Hz T.E.F.C. Motor Mount Assembly Complete (includes illus. nos. 2 through 7 and 13 through 20)
	803929	1	1/2 HP 240v 50Hz 1 ϕ T.E.F.C. Motor Mount Assembly Complete with Plug Motor (includes illus. nos. 3 through 7 and 13 through 20) For models manufactured as of August 28, 1992
	803792*	1	1/2 HP 208/230/380/460v 3 ϕ 50Hz T.E.F.C. Motor Mount Assembly Complete (includes illus. nos. 2 through 6 and 13 through 22)
	803924	1	1/2 HP 240v 50Hz 1 ϕ T.E.F.C. Motor Mount Assembly Complete (includes illus. nos. 3 through 6 and 13 through 22) For models manufactured prior to August 28, 1992
16	153050	2	1/2" S.A.E. Flat Washer
17	100604	1	12-1/2" Impellor (fan/blower) with 1/2" Bore
18	100702	1	1/8" x 1/8" x 1-1/2" Key
19	153050	2	1/2" S.A.E. Flat Washer
20	152006	2	#1/2-20 Left Hand Jam Nut
21	120200	1	3/8" x 90 $^{\circ}$ Connector
22	100007*	1	1/2 HP 208/230/380/460v 3 ϕ 50/60Hz T.E.F.C. Motor (56Z Frame)
	100035	1	1/2 HP 240v 50Hz 1 ϕ T.E.F.C. Motor (56Z Frame) For models manufactured prior to August 28, 1992

* Specify voltage when ordering.



Non-Computer
Sensor
Bracket
Assembly

Microprocessor
Sensor
Bracket
Assembly



MAN0238

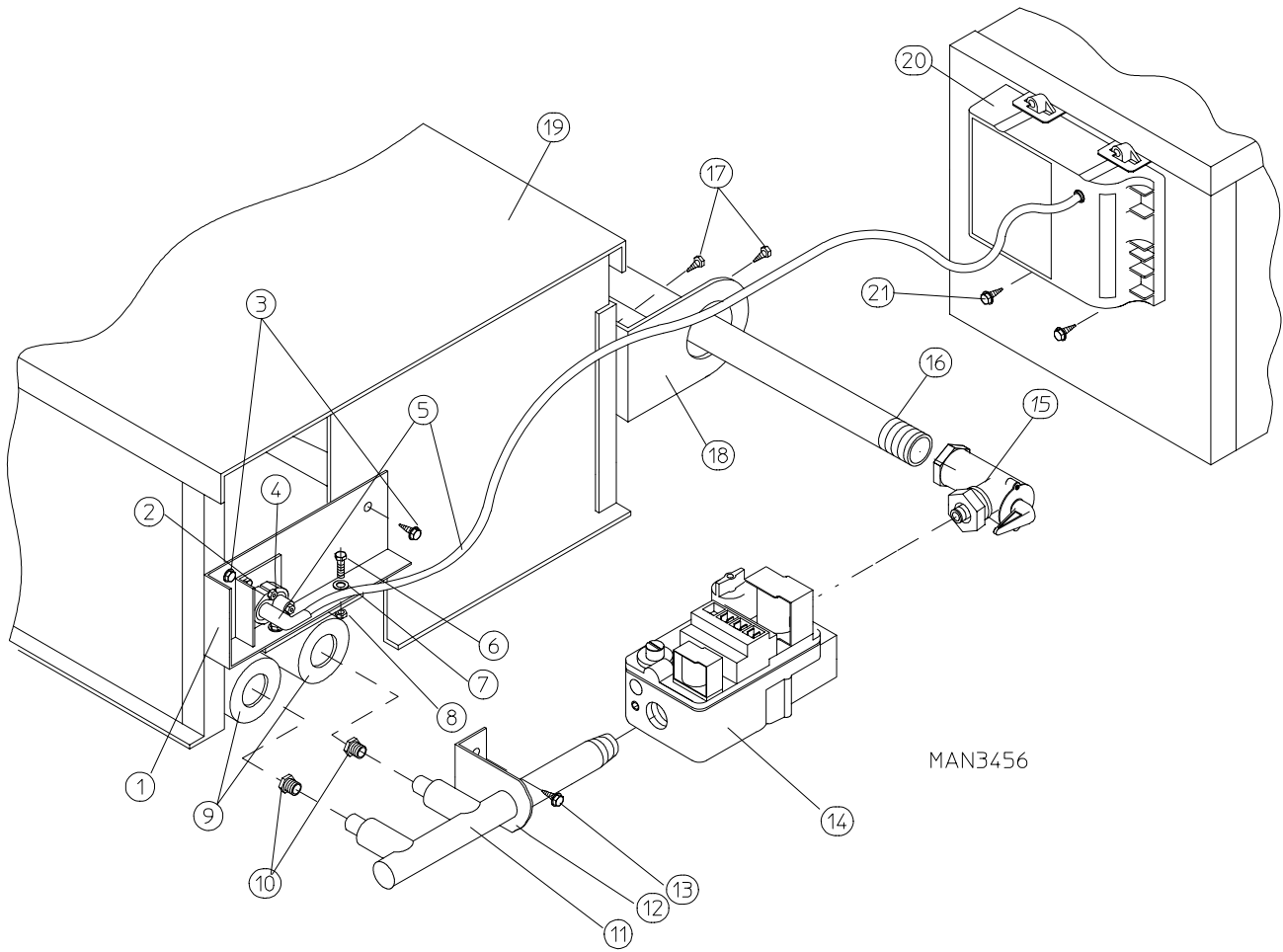
Illus. No.	Part No.	Qty.	Description
1	880251	1	1/4" Temperature Sensor Probe Assembly (includes illus. nos. 1, and 5 through 8)
2	130103	1	225° Large Automatic Thermostat
3	153010	2	#6 Star Washer
4	152000	2	#6-32 Hex Nut
5	121028	2	Insulated Terminal ONLY
6	122701	4	Socket Terminal ONLY
7	122605	1	4-Pin Socket ONLY
8	154007	2	1/4" Tinnerman Push-on Fastener
9	150005	2	#6-32 x 1/4" Round Head Machine Screw
10	801425	1	Microprocessor Sensor Bracket Assembly Complete (includes illus. nos. 1 through 10)
	305007	1	Universal Sensor Bracket ONLY
11	122604	1	4-Pin Connector ONLY
12	122700	4	Pin Terminal ONLY

<u>Illus. No.</u>	<u>Part No.</u>	<u>Qty.</u>	<u>Description</u>
13	150301	2	#8-18 X 7/16" Phillips Pan Head TEK Screw
14	150000	*	#6-32 x 1/4" Slotted Round Head Machine Screw
15	130111	1	130° Large Thermostat (for models mfd. as of August 1, 1993)
	130100	1	150° Large Thermostat (for models mfd. prior to August 1, 1993)
16	130100	1	150° Large Thermostat (for models mfd. as of August 1, 1993)
	130103	1	225° Large Automatic Thermostat (for models mfd. prior to August 1, 1993)
17	130103	1	225° Large Automatic Reset Thermostat (for models mfd. as of August 1, 1993)
18	130106	1	170° Large Thermostat (for models mfd. as of April 1, 1994)
	130101	1	180° Large Thermostat (for models mfd. prior to April 1, 1994)
19	153010	*	#6 Star Washer
20	152000	*	#6-32 Hex Nut
21	840065	1	Sensor Jumper (4) (for models mfd. as of August 1, 1993)
	840063	1	Sensor Jumper (3) ONLY (for models mfd. prior to August 1, 1993)
22	121028	**	Insulated Terminal ONLY
23	122701	***	Socket Terminal ONLY
24	122605	1	4-Pin Socket Connector ONLY (for models mfd. as of August 1, 1993)
	122609	1	3-Pin Socket Connector ONLY (for models mfd. prior to August 1, 1993)
	831702	1	Sensor (3) Bracket Harness Assembly (includes illus. nos. 22, 23, and 24) For models mfd. prior to August 1, 1993
	840062	1	Sensor (4) Bracket Harness Assembly (includes illus. nos. 22, 23, and 24) For models mfd. as of August 1, 1993
25	801405	1	Non-Computer Sensor (3) Bracket Assembly Complete <i>includes thermostats</i> (includes illus. nos. 14, 15, 16, and 18 through 25) For models mfd. prior to August 1, 1993
	801418	1	Non-Computer Sensor (4) Bracket Assembly Complete <i>includes thermostats</i> (includes illus. nos. 14 through 25) (for models mfd. as of August 1, 1993)
	305007	1	Universal Sensor Bracket ONLY
26	122604	1	4-Pin Connector ONLY (for models mfd. as of August 1, 1993)
	122608	1	3-Pin Connector ONLY (for models mfd. prior to August 1, 1993)
27	122700	***	Pin Terminal ONLY
	122801	1	Pin/Socket Extraction Tool
28	150301	2	#8-18 x 7/16" Phillips Pan Head TEK Screw

* Quantity is 4 or 5.

** Quantity is 6 or 8.

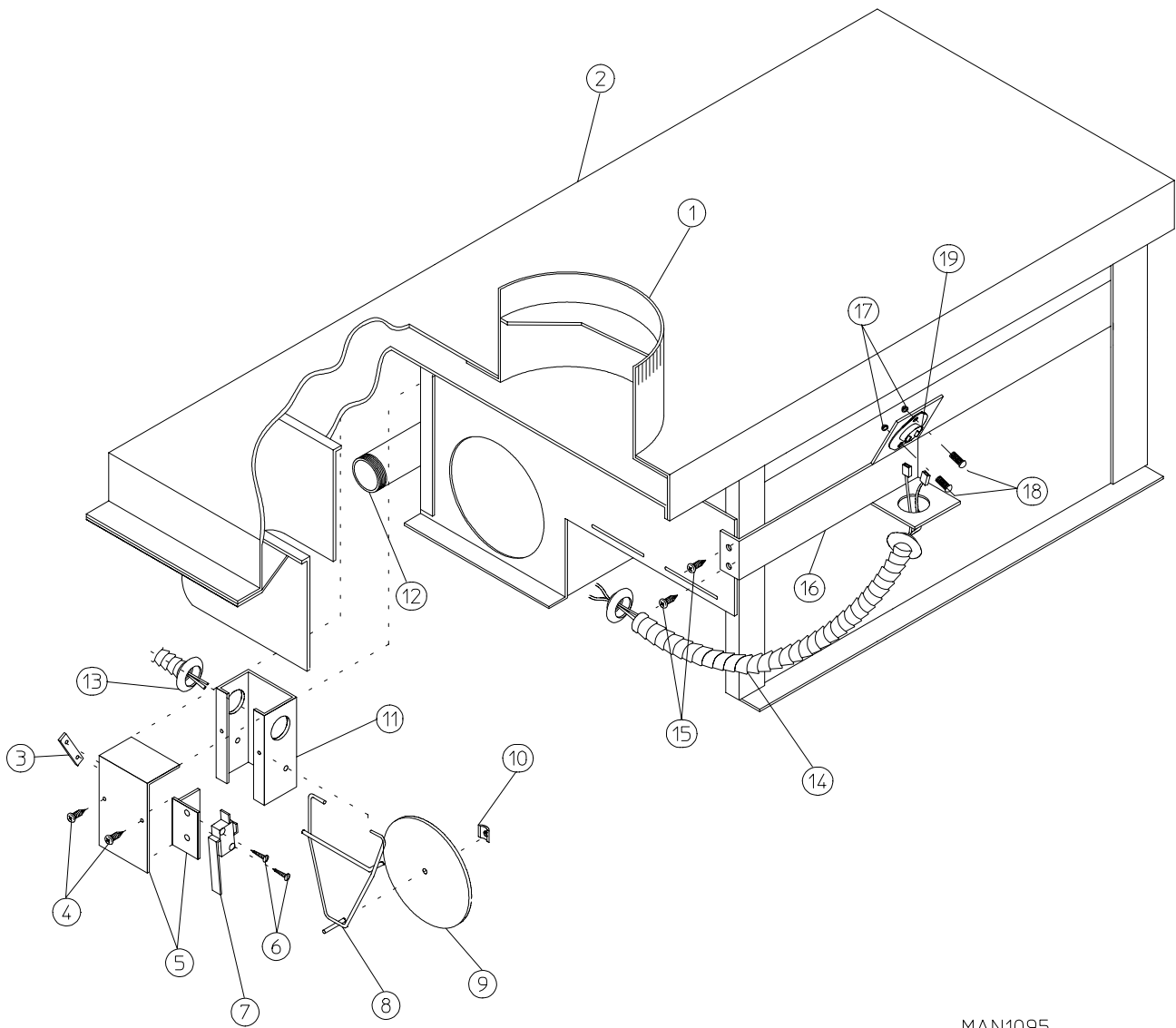
*** Quantity is 3 or 4.



<u>Illus. No.</u>	<u>Part No.</u>	<u>Qty.</u>	<u>Description</u>
1	318030	1	DSI Burner Shield (2-Tube)
2	150300	2	#10 x 1/2" Hex Washer TEK Screw
3	150415	2	#10-16 x 1/2" Phillips Round Head Crimptite Screw
4	128915	1	DSI Ignitor/Flame Probe Assembly
	880134	1	Ignitor/Flame Probe Kit Assembly (includes HV [high voltage] wire and connector)
5	880330	1	HV Wire and Connector Assembly
6	150103	2	#8-32 x 1/2" Pan Head Machine Screw
7	153000	2	#8 Steel Burr
8	151001	2	#8-32 Pal Nut
9	141105	2	Large Tube Burner ONLY
10*	140855	2	#33 Burner Orifice (natural gas) ONLY
	140801	2	#51 Burner Orifice (liquid propane) ONLY
11	141230	1	1/2" DSI Manifold (2-Port)
12	318700	1	Pipe Bracket (bent)
13	150300	2	#10 x 1/2" Hex Washer TEK Screw
14	128927	1	1/2" 24 VAC Redundant Gas Valve (natural gas)
	140411	1	1/2" Valve Conversion Kit (liquid propane)
	880960	1	1/2" DSI Gas Valve/L.P. Kit Combination
15	881367	1	1/2" Union Shut Off with Tail Piece
16	142809	1	1/2" x 29-1/8" pipe
17	150415	4	#10-16 x 1/2" Phillips Round Head Crimptite Screw
18	318700	1	Pipe Bracket (bent)
19**	850862	1	ADG-285 DSI Burner Box and Bonnet ONLY
	809637	1	ADG-285 DSI (natural gas) Burner Assembly Complete Less Orifices (includes illus. nos. 1 through 9 and 11 through 20)
	809636	1	ADG-285 DSI (liquid propane) Burner Assembly Complete Less Orifices (includes illus. nos. 1 through 9 and 11 through 20)
20	880815	1	ADC DSI Module ONLY
21	150299	4	#10 x 1" Hex Washer TEK Screw
---	874054*	1	ADG-285 DSI/HR (liquid propane) Conversion Kit (includes orifices)

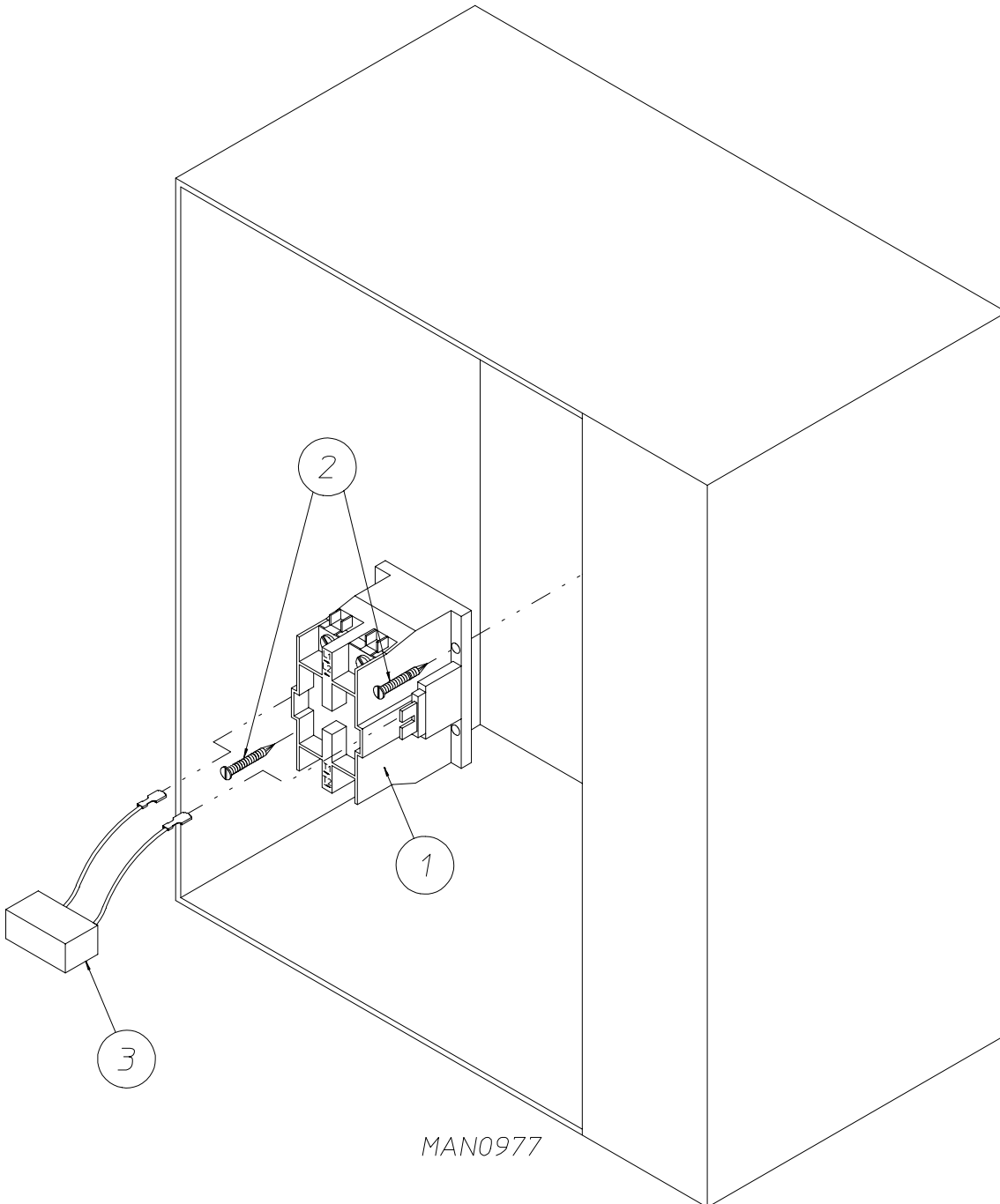
* Consult factory for elevations over 2,000 feet.

** Burner orifices **are not** included and **must be** ordered separately.

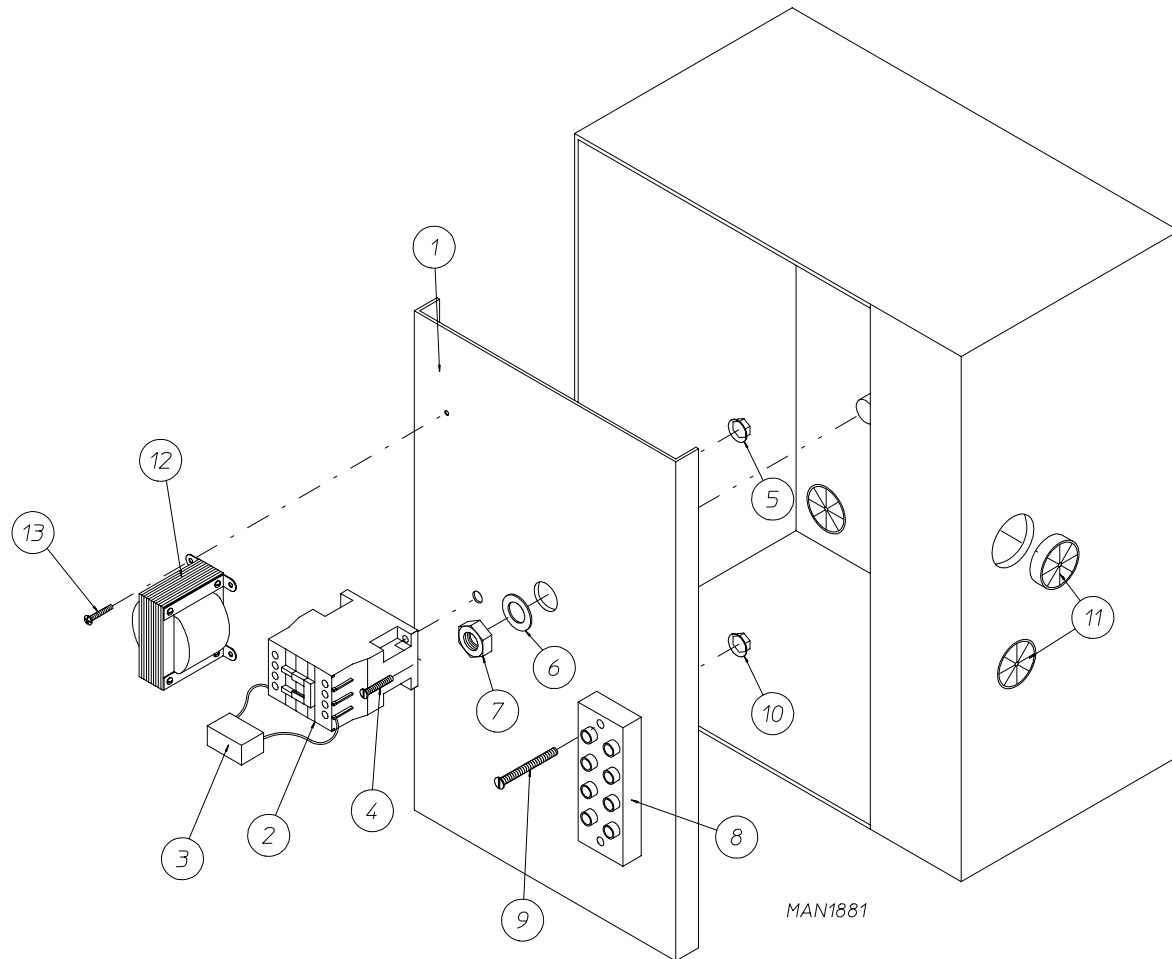


MAN1095

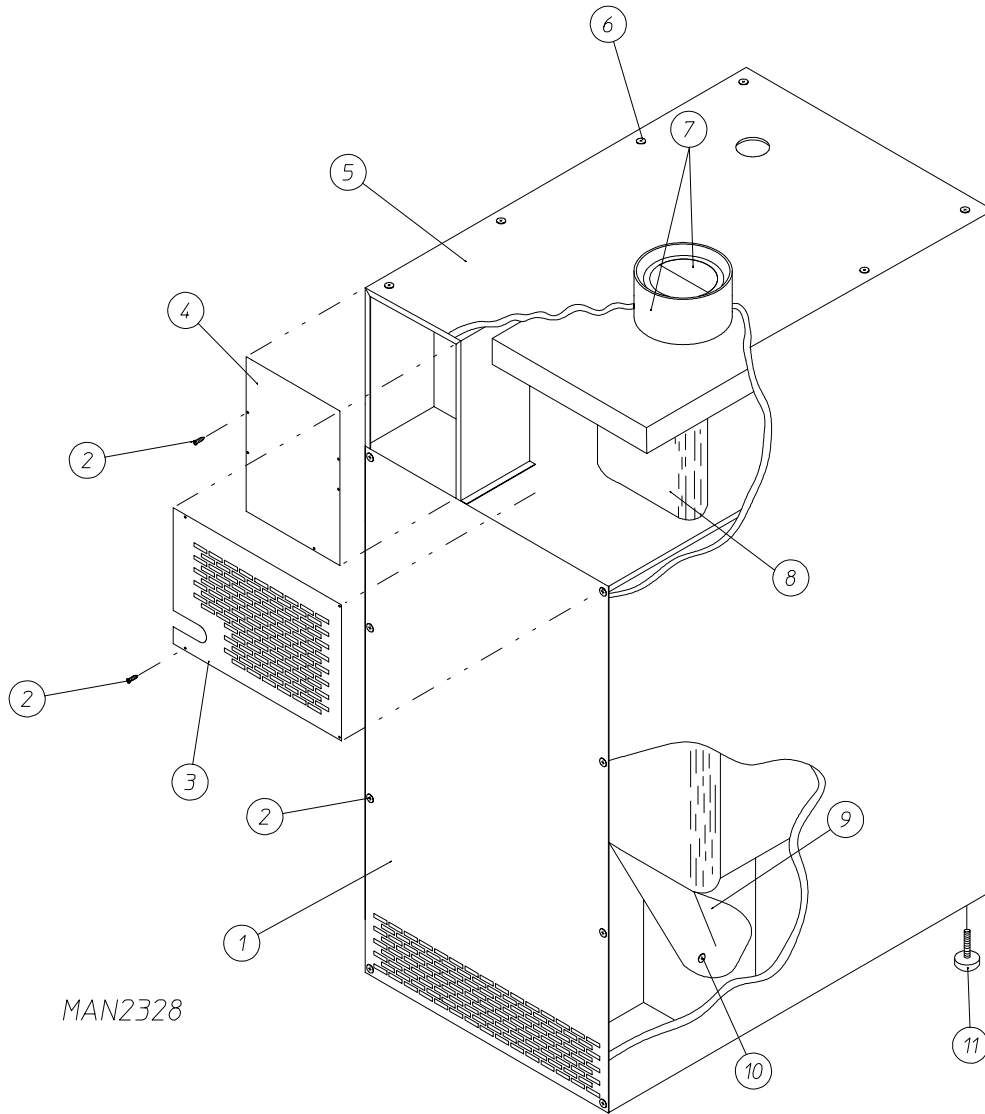
<u>Illus. No.</u>	<u>Part No.</u>	<u>Qty.</u>	<u>Description</u>
1	880502	1	Heat Reclaimer (6") Damper Assembly
2	850862	1	ADG-285 DSI Heat Reclaimer Burner Box and Bonnet ONLY
3	154004	1	Twin Speed Nut
4	150415	2	#10-16 x 1/2" Phillips Round Head Crimptite Screw
5	802799	1	Sail Switch Box Cover and Bracket ONLY
6	150303	2	#4 x 3/4" Pan Head "A" Machine Screw
7	122200	1	Sail Switch ONLY
8	105500	1	Sail Switch Actuator Rod
9	319202	1	Sail Switch Damper (flat)
10	154002	1	1/8" Push-On Fastener
11	802801	1	Sail Switch Box Assembly Complete (includes illus. nos. 3 through 11)
	802800	1	Sail Switch Box With Cover and Bracket ONLY
12	142809	1	1/2" x 29-1/8" Pipe
13	840055	1	ADG-285 Sail Switch Harness
14	830116	1	ADG-285 Hi-Limit Harness
15	150415	2	#10-16 x 1/2" Phillips Round Head Crimptite Screw
16	319704	1	Hi-Limit Mounting Bracket ONLY
17	151000	2	#6-32 Pal Nut
18	150001	2	#6-32 x 1/2" Round Head Machine Scre
19	130401	1	330° Hi-Limit



<u>Illus. No.</u>	<u>Part No.</u>	<u>Qty.</u>	<u>Description</u>
1	132451	1	2-Pole Contactor - 24 VAC
2	150299	2	#10 x 1" Hex Head TEK Screw
3	824828	1	RC Network with Connectors (for Microprocessor Models ONLY)
--	322809	1	Back Electrical Box Cover ... Not Illustrated
--	150301	4	#8-18 x 7/16" Phillips Round Head TEK Screw ... Not Illustrated



<u>Illus. No.</u>	<u>Part No.</u>	<u>Qty.</u>	<u>Description</u>
1	322812	1	Back Electrical Box Component Plate
2	132430	1	Impellor (Fan/Blower) Contactor - 24 VAC (208/230/240v 50/60Hz)
	132432	1	Impellor (Fan/Blower) Contactor Replacement Coil - 24 VAC (208/230/240v 50/60Hz)
3	824828	1	RC Network with Filter (for Microprocessor Models ONLY)
4	150103	2	#8-32 x 3/4" Phillips Round Head Machine Screw
5	151001	2	#8-32 Pal Nut
6	153002	1	5/16" Lock Washer
7	152004	1	5/16-18 Hex Nut
8	120701	1	4-Position Terminal Block
9	150008	2	#6-32 x 1-1/4" Slotted Round Head Machine Screw
10	151000	2	#6-32 Pal Nut
11	121300	3	Open/Close Bushing
12	-----	1	Step Down Transformer Transformer (refer to ADG-285 Step Down Transformer Usage Listing on page 34)
13	150300	2	#10 x 1/2" Hex Washer TEK Screw
--	322809	1	Back Electrical Box Cover ... Not Illustrated
--	150301	4	#8-18 x 7/16" Phillips Pan Head TEK Screw ... Not Illustrated



Illus. No.	Part No.	Qty.	Description
1	330608	1	AD-285 "Plain" Bottom Back Guard (for models mfd. as of August 16, 1995)
	330636	1	AD-285 "Lettered" Bottom Back Guard (for models mfd. prior to August 16, 1995)
2	150301	16	#8-18 x 7/16" Phillips Pan Head TEK Screw
3	330614	1	AD-285 Top Back Guard ONLY
4	322809	1	Back Electrical Box Cover
5	330619	1	AD-285 Outer Top Guard ONLY
6	150301	8	#8-18 x 7/16" Phillips Pan Head TEK Screw
7	880502	1	Heat Reclaimer (6") Damper Assembly
8	143517	1	42" Long x 7" Oval Duct
9	143515	1	6" Round x 7" Oval - 90° Boot
10	150300	2	#10 x 1/2" Hex Washer TEK Screw
11	103500	4	Leveling Leg
---	117505	4	Aluminum Duct Tape (sold in feet)

NOTE: Coin Acceptors listed include Optical Switch (ADC Part No. 137056)

Single Coin*

ADC Part No.	Nation	Description
125100	U.S. and Canada	25¢ Optic Coin Acceptor
125127	Canada	\$ Canadian Optic Coin Acceptor
125101	United Kingdom	10 New Pence Optic Coin Acceptor
125114	United Kingdom	20 New Pence Optic Coin Acceptor
125115	United Kingdom	1 Pound Optic Coin Acceptor
125106	France	1 French Franc Optic Coin Acceptor
125120	France	2 French Franc Optic Coin Acceptor
125124	France	5 French Franc Optic Coin Acceptor
125109	Denmark	1 Danish Krone Optic Coin Acceptor
125125	Netherlands	25¢ Guilder Optic Coin Acceptor
125108	Australia	10¢ Australian Optic Coin Acceptor
125107	Australia	20¢ Australian Optic Coin Acceptor
125130	Australia	\$1 Australian Optic Coin Acceptor
125123	New Zealand	50¢ New Zealand Optic Coin Acceptor
125104	Japan	100 Yen Optic Coin Acceptor
125103	---	.882 Token Optic Coin Acceptor
125121	---	.800 Token Optic Coin Acceptor
125129	---	Muller Token Optic Coin Acceptor
125132	Singapore	50¢ Singapore Optic Coin Acceptor
125133	Hong Kong	\$1 Hong Kong Optic Coin Acceptor

Dual Coin*

125116	U.S. and Canada	10¢ / 25¢ Dual Optic Coin Acceptor
125128	Canada	25¢ / \$1 Dual Optic Coin Acceptor
125112	United Kindom	10 / 20 Pence Dual Optic Coin Acceptor
125110	United Kingdom	10 / 50 Pence Dual Optic Coin Acceptor
125111	United Kingdom	20 / 50 Pence Dual Optic Coin Acceptor
125113	United Kingdom	1 Pound / 20 Pence Dual Optic Coin Acceptor
125122	France	2 / 5 Franc Dual Optic Coin Acceptor
125117	Denmark	1 / 5 Danish Krone Dual Optic Coin Acceptor
125131	Denmark	5 / 10 Danish Krone Dual Optic Coin Acceptor
125126	Netherlands	25¢ / \$1 Guilder Dual Optic Coin Acceptor
125118	Singapore	20¢ / 50¢ Singapore Dual Optic Coin Acceptor
125105	Japan	50 / 100 Yen Dual Optic Coin Acceptor

* Consult Factory for Coin Acceptors Not Listed

ADG-285	Voltage	Wire Service	Step Down Transformer Part Number
	208/240	3 or 4	-----
	380	3	132059
	380	4	132059
	416	3	132062
	416	4	132062
	460/480	3	132053
	460/480	4	132053
	575	3	132050

NOTE: Step Down Transformer used on models mfd. for 380 volts or higher.

<u>Part No.</u>	<u>Description</u>
112027	“Water Washed Fabrics” Label
112040	“Lint Compartment” Label
112041	“Caution-Exhausted” Label
112533	“Phase 5 Coin Program Location Summary” Label
112534	“Phase 5 OPL Program Location Summary” Label
120100	3/8” Straight (BX) Connector
120300	3/8” x 45° (BX) Connector
120400	3/8” Red Jacket (BX) Insulator
120500	3/8” Jiffy Clip (BX Retainer Clip)
120600	3/8” Greenfield (BX)
120707	Terminal Strip (2-position)
120708	Terminal Strip (3-position)
120800	1/4” In-Line Connector
120802	Red Butt Connector
120902	#74B Wire Nut
120903	Crimp-on Wire Nut
121014	1/4” Insulated (female) Terminal
121026	Tab Receptacle Combination
121499	4” Harness Tie
121500	7” Harness Tie
121503	Harness Tie Mounting Clip
112804	Manometer (Hydro Gauge) for measuring Gas Pressure
404500	Almond Brush-In-Cap Bottle Touch-Up Paint
404502	White-Brush-In-Cap Bottle Touch-Up
404506	Beige Brush-In-Cap Bottle Touch-Up Paint
404507	Cornflower Blue Brush-In-Cap Bottle Touch-Up Paint
880200	Electrical Terminal (assortment) Kit

ADC 450112 **1-** 10/16/92-150 **2*** 03/18/93-150 **3*** 03/21/94-100
4- 04/17/95-100 **5*** 11/02/95-100 **6*** 07/02/97-200

