



AD-120ES Parts Manual

24 VAC Phase 5

(for models mfd. as of July 1995)

American Dryer Corporation
88 Currant Road
Fall River, MA 02720-4781
Telephone: (508) 678-9000 / Fax: (508) 678-9447
e-mail: techsupport@amdry.com

Retain This Manual In A Safe Place For Future Reference

American Dryer Corporation products embody advanced concepts in engineering, design, and safety. If this product is properly maintained, it will provide many years of safe, efficient, and trouble-free operation.

ONLY qualified technicians should service this equipment.

OBSERVE ALL SAFETY PRECAUTIONS displayed on the equipment or specified in the installation/operator's manual included with the dryer.

The following “**FOR YOUR SAFETY**” caution **must be** posted near the dryer in a prominent location.

FOR YOUR SAFETY

Do not store or use gasoline or other flammable vapors or liquids in the vicinity of this or any other appliance.

POUR VOTRE SÉCURITÉ

Ne pas entreposer ni utiliser d'essence ni d'autres vapeurs ou liquides inflammables dans le voisinage de cet appareil ou de tout autre appareil.

We have tried to make this manual as complete as possible and hope you will find it useful. **ADC** reserves the right to make changes from time to time, without notice or obligation, in prices, specifications, colors, and material, and to change or discontinue models.

Important

For your convenience, log the following information:

DATE OF PURCHASE _____ MODEL NO. **AD-120ES**

DISTRIBUTORS NAME _____

Serial Number(s) _____

Replacement parts can be obtained from your distributor or the **ADC** factory. When ordering replacement parts from the factory, you can FAX your order to **ADC** at (508) 678-9447 or telephone your orders directly to the **ADC** Parts Department at (508) 678-9000. Please specify the dryer **model number** and **serial number** in addition to the **description** and **part number**, so that your order is processed accurately and promptly.

The illustrations on the following pages may not depict your particular dryer exactly. The illustrations are a composite of the various dryer models. Be sure to check the descriptions of the parts thoroughly before ordering.

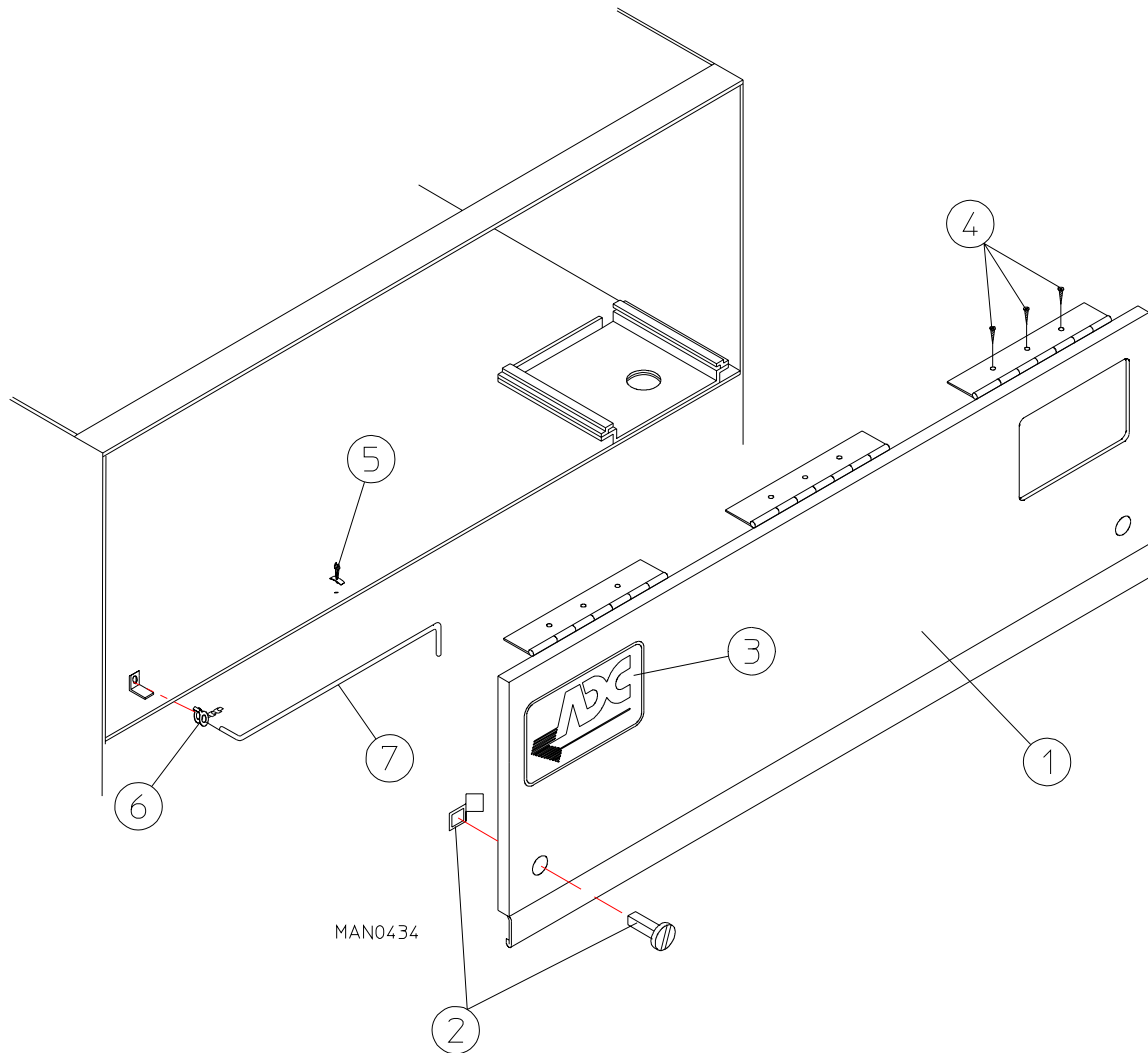
“IMPORTANT NOTE TO PURCHASER”

Information must be obtained from your local gas supplier on the instructions to be followed if the user smells gas. These instructions must be posted in a prominent location near the dryer.

Table of Contents

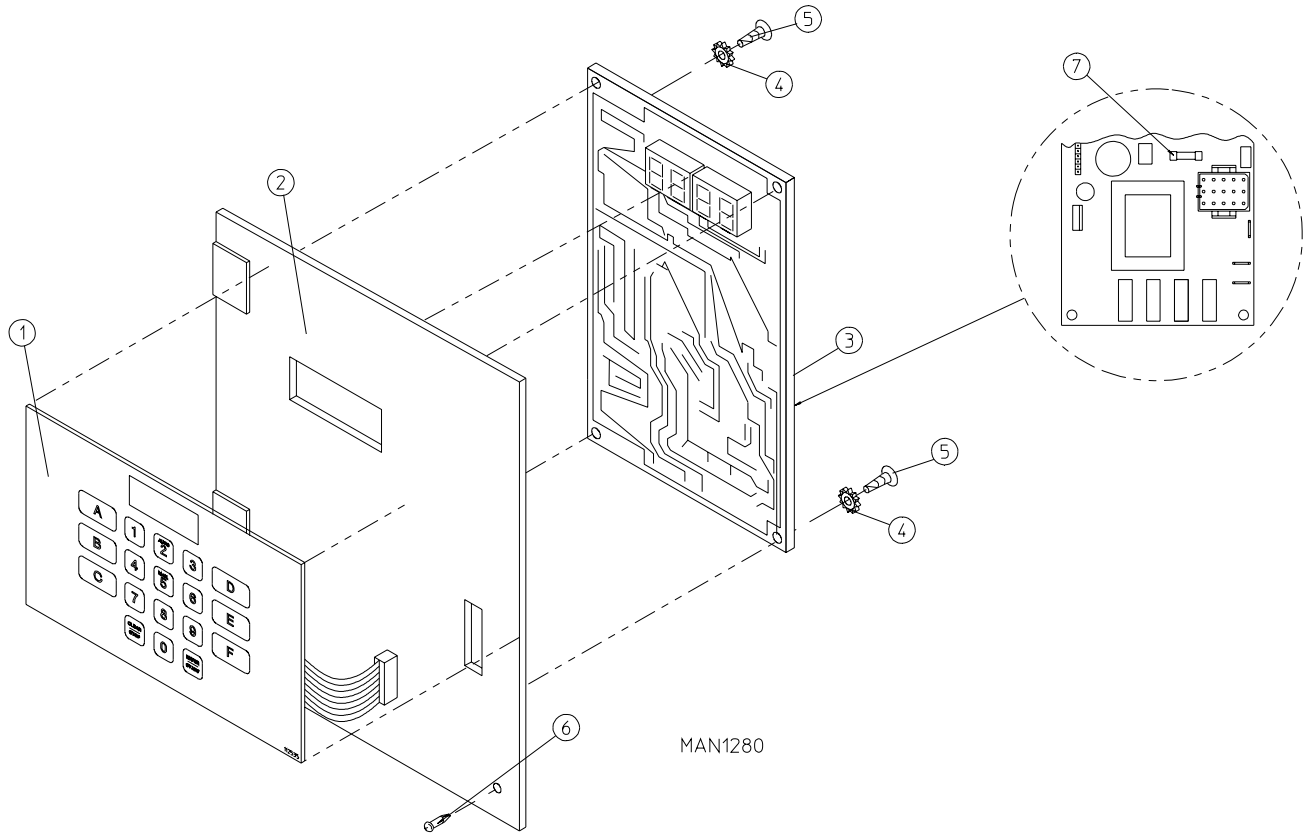
Control Door Assembly	3
Microprocessor Control Panel Assembly	4
Microprocessor Control Box Assembly	5
Dual Timer Control Panel Assembly	6, 7
Dual Timer Control Box Assembly	8, 9
Front Panel/Main Door Assemblies	10, 11
Main Door Switch Assembly	12
Lint Drawer/Lint Drawer Switch Box Assemblies.....	13
Drop Lint Door Assembly	14
Microprocessor (Computer) Temperature Sensor Bracket Assembly	15
Dual Timer Temperature Sensor Bracket Assembly	16, 17
Basket (Tumbler)/Support Assemblies	18, 19
Tumbler Bearing Mount Assembly	20, 21
Idler Bearing Mount Assembly	22, 23
Tumbler (Drive) Motor Mount Assembly	24, 25
Impellor/Fan Assembly	26, 27
Blower Motor Mount Assembly for Gas Models ONLY	28, 29
Blower Motor Mount Assembly for Electric Models ONLY	31, 32
Blower Motor Mount Assembly for Steam Models ONLY	33, 34
Direct Spark Ignition (DSI) Burner Assembly for Gas Models ONLY	34, 35

Direct Spark Ignition (DSI) Module Mount Assembly for Gas Models ONLY	36
Sail Switch Assembly	37
Electric Oven Assembly for Gas Models ONLY	38, 39
Electric Oven Relay Box Assembly 208-240 VAC - 3ϕ - 50/60 Hz	40
Electric Oven Relay Box Assembly 380-416/480 VAC - 3ϕ - 50/60 Hz	41
Steam Damper Assembly for Steam Models ONLY	42, 43
Microprocessor Reversing Contactor Mounting Panel Assembly	44
Dual Timer Reversing Contactor Mounting Panel Assembly	45
Extended Back Guard Assembly	46
Step Down Transformer Application Listing	47
Electric Oven Component Application Listing for Electric Models ONLY	48
Electric Oven Power Distribution 72 Kw - 208-240 VAC - 3ϕ - 50/60 Hz	49
Electric Oven Power Distribution 72 Kw - 380-416/480 VAC - 3ϕ - 50/60 Hz	50
Electric Oven Power Distribution 80 Kw - 208-240 VAC - 3ϕ - 50/60 Hz	51
Electric Oven Power Distribution 80 Kw - 380-416/480 VAC - 3ϕ - 50/60 Hz	52
Electric Oven Wiring 72/80 Kw - 208-240 VAC - 3ϕ - 50/60 Hz	53
Electric Oven Wiring 72/80 Kw - 380-416/480 - 3ϕ - 50/60 Hz	54
Additional Parts Available	55



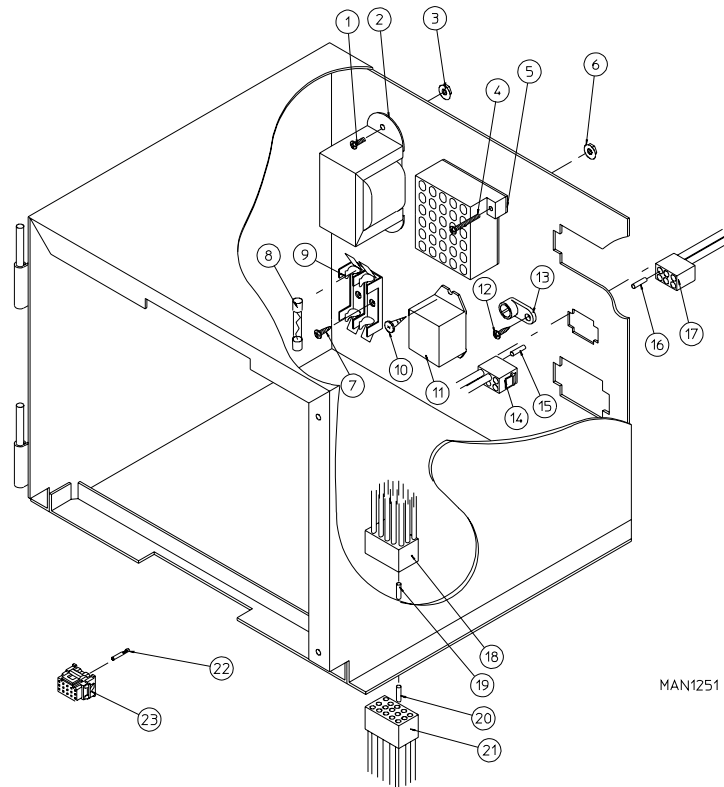
Illus. No.	Part No.	Qty	Description
1	820004*	1	Control Door Assembly ONLY (for Gas Models and Electric Models Only)
	820003	1	Stainless Steel Control Door Assembly ONLY (for Gas Models and Electric Models Only)
	820006*	1	Short Control Door ONLY (for Steam Models Only)
	820009	1	Stainless Steel Control Door Assembly ONLY (for Steam Models Only)
2	160005	2	Spring Turn Latch (2-piece)
3	112360	1	ADC Logo ONLY
	870011	1	Double Tape Kit
4	150413	9	#10-16 x 1/2" Torx Crimptite Screw
5	102600	1	Control Door Support Rod Catch
6	102601	1	Control Door Retainer Clip
7	102505	1	Control Door Support Rod

* Specify color when ordering.



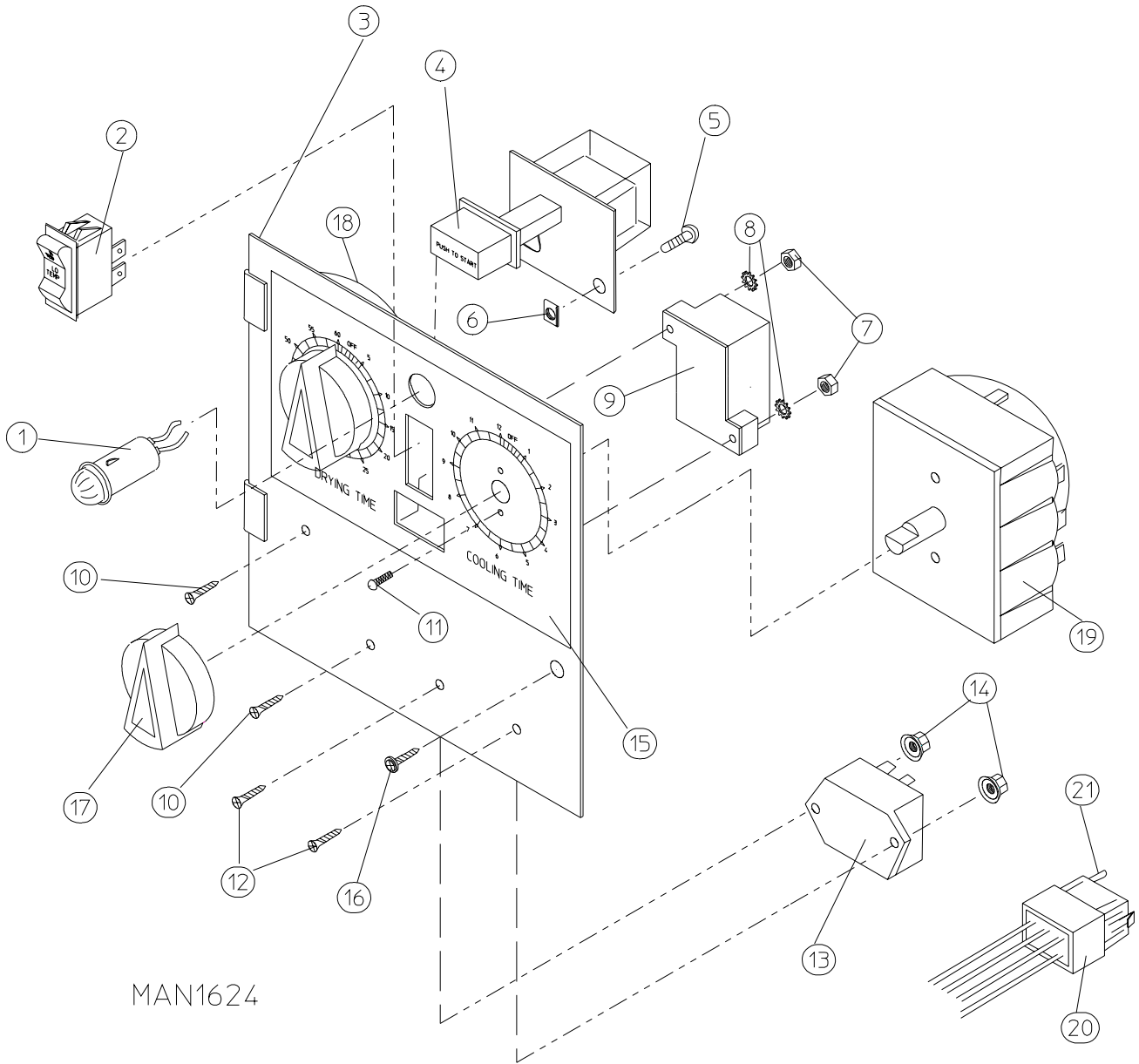
Illus. No.	Part No.	Qty	Description
1	112535	1	OPL English Keyboard Label Assembly
	112276	1	OPL Stick-on Labels (English Only) ... Not Illustrated
	112275	1	OPL Stick-on Labels (Spanish, Italian, and Hebrew) ...Not Illustrated
	112277	1	3-Language OPL Stick-on Labels (English, Spanish, and Hebrew) ... Not Illustrated
	112278	1	5-Language OPL Stick-on Labels (Italian, Dutch, French, German, and Chinese) ... Not Illustrated
2	880836	1	Microprocessor (computer) Control Panel ONLY
	801260	1	Microprocessor (computer) Control Panel Only with Battery Bracket
	801215	1	Microprocessor (computer) Control Panel Assembly Complete (includes illus. nos. 1 through 5 and 7)
	801214	1	Microprocessor Control Panel Assembly Complete with Battery Option (includes illus. nos. 1 through 5 and 7)
3	137231	1	Phase 5 OPL Reversing Microprocessor Controller (computer) ONLY
	824998	1	Phase 5 Battery Clip ONLY
4	153010	2	#6 Star Washer
5	150005	2	#6-32 x 3/4" Phillips Round Head Machine Screw
6	150413	1	#10-16 x 1/2" Torx CrimpTite Screw
7	136048	1	1/8-Amp (Slo Blo) Fuse ONLY

IMPORTANT: Check label on computer chip to verify correct part number for microprocessor (computer).



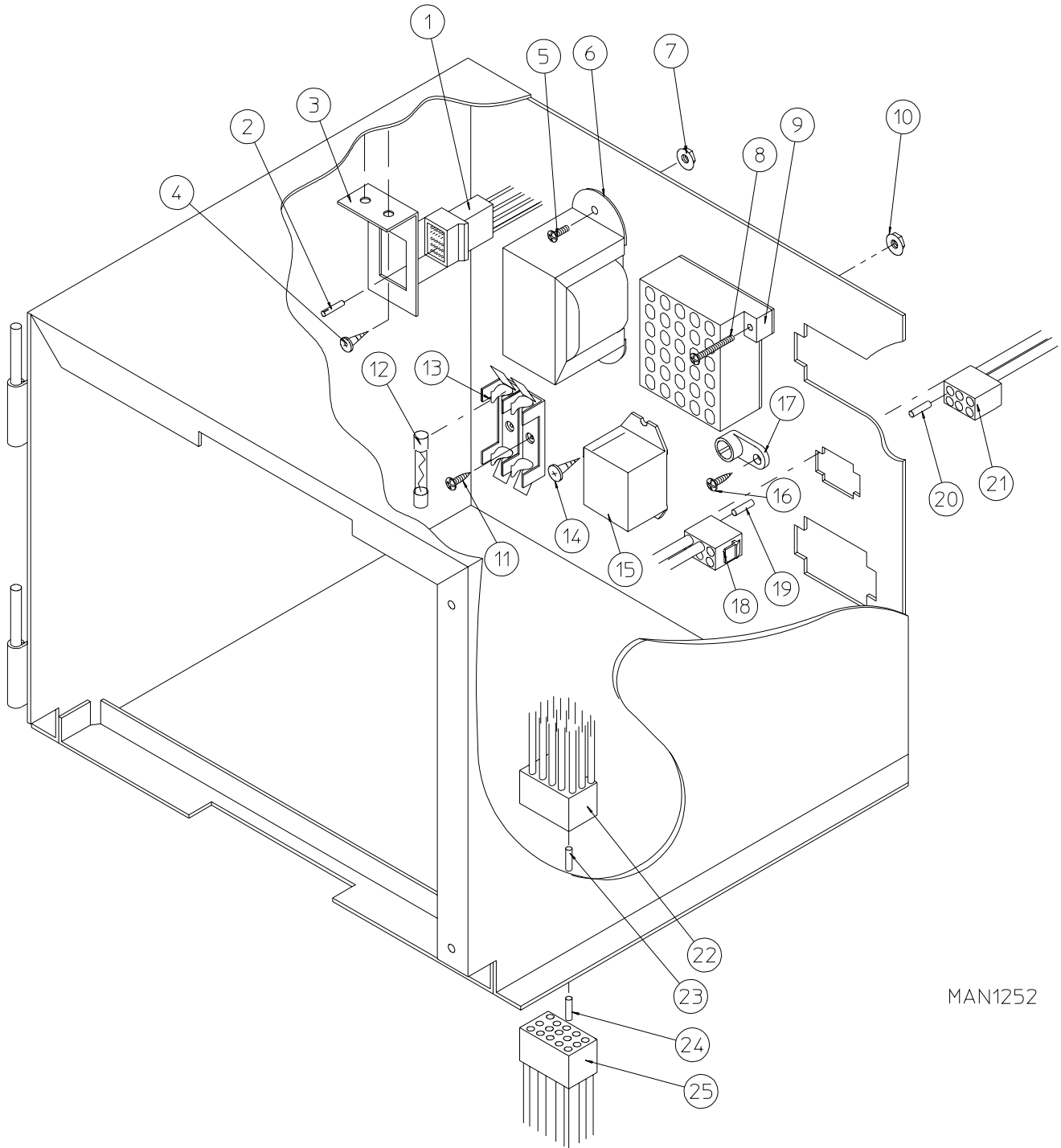
Illus. No.	Part No.	Qty	Description
1	150100	2	#8-32 x 1/2" Round Head Machine Screw
2	141403	1	24 VAC Transformer - 50/60 Hz (for Gas and Steam Models Only)
3	151001	2	#8-23 Pal Nut
4	150002	2	#6-32 x 1" Round Head Machine Screw
5	120715	1	30-Position Terminal Block
6	151000	2	#6-32 Pal Nut
7	150102	2 or 3	#8 x 3/8" Phillips Round Head TEK Screw
8	136057	2	1/2 Amp (Slo Blo) Fuse ONLY
	182453	2 or 3	6-Amp (Fast Acting) Fuse (for Electric Models Only)
9	136008	2 or 3	Fuse Block/Strip ONLY
10	150413	2	#10-16 x 1/2" Torx Crimptite Screw
11	131932	1	24 VAC Relay (for Electric Models Only)
12	150413	1	#10-16 x 1/2" Torx Crimptite Screw
13	121010	1	L-70 Ground Lug
14	122631	1	6-Pin Connector ONLY
15	122705	*	Socket Terminal ONLY
16	122704	*	Pin Terminal ONLY
17	122630	1	6-Pin Connector ONLY
18	122625	1	15-Pin Connector ONLY
	137025	1	15-Position Strain Relief ... Not Illustrated
19	122704	12	Pin Terminal ONLY
20	122705	12	Socket Terminal ONLY
21	122626	1	15-Pin Socket Connector ONLY
22	122706	11	Microprocessor Socket ONLY
23	122641	1	15-Pin Microprocessor Connector ONLY
---	122800	1	Microprocessor (female) Pin Extraction Tool
---	122801	1	Pin/Socket Extraction Tool

* As required (either 2 or 3).



MAN1624

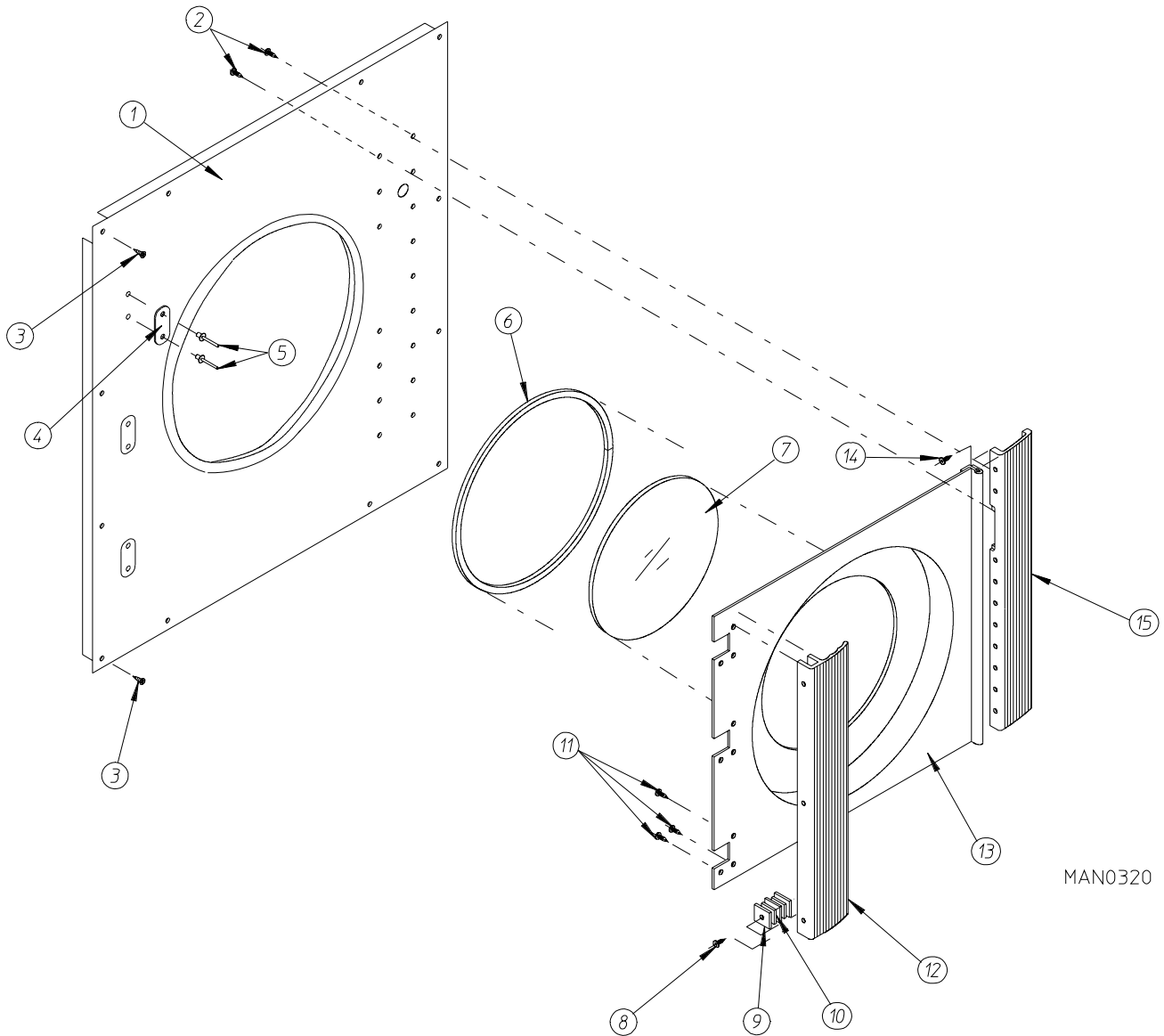
Illus. No.	Part No.	Qty	Description
1	123005	1	Red Indicator Light - 24 VAC
2	122400	1	Rocker Heat Selector Switch
3	880838	1	Dual Timer Control Panel Assembly Complete - 24 VAC (includes illus. nos. 1 through 15 and 17 through 21)
	880837	1	Dual Timer Control Panel ONLY
4	131917	1	Push to Start Relay - 24 VAC
5	150207	2	#10-24 x 1/2" Phillips Round Head Machine Screw
6	154001	2	#10-24 Speed Nut
7	152000	2	#6-32 Hex Nut
8	153010	2	#6 Star Washer
9	120730	1	30-Position Terminal Block
10	153565	2	#6-32 x 1" Clinch Stud
11	150110	4	#8-32 x 1/4" Phillips Round Head Machine Screw
12	153560	2	#6-32 x 1/2" Clinch Stud
13	131931	1	Dual Timer Relay - 24 VAC
14	151000	1	#10-16 x 1/2" Pal Nut
15	112050	1	Dual Timer Label ONLY
16	150413	1	#10-16 x 1/2" Torx Crimptite Screw
17	124103	2	Arrow Timer Knob
18	124025	1	60-Minute Timer - 24 VAC
19	124030	1	15-Minute Timer - 24 VAC
20	122602	1	9-Pin Connector ONLY
21	122700	7	Pin Terminal ONLY
---	122801	1	Pin/Socket Extraction Tool



MAN1252

Illus. No.	Part No.	Qty.	Description
1	122603	1	9-Pin Socket Connector
2	122701	7	Socket Terminal Only
	122801	1	Pin/Socket Extraction Tool
3	315010	1	9-Pin Connector Bracket
4	150300	2	#10 x 1/2" Hex Washer TEK Screw
5	150100	2	# 8-32 x 1/2" Phillips Round Head Machine Screw
6	141403	1	24 VAC Transformer - 50/60 Hz (for Gas Models and Steam Models Only)
7	151001	2	#8-23 Pal Nut
8	150002	2	#6-32 x 1" Phillips Round Head Machine Screw
9	120715	1	30-Position Terminal Block
10	151000	2	#6-32 Pal Nut
11	150102	2 or 3	#8 x 3/8" Phillips Round Head TEK Screw
12	136057	2	1/2-Amp (Slo Blo) Fuse ONLY
	182453	1	6-Amp (Fast Acting) Fuse (for Electric Models Only)
13	136008	2 or 3	Fuse Block/Strip ONLY
14	150413	2	#10-16 x 1/2" Torx CrimpTite Screw
15	131932	1	24 VAC Relay (for Electric Models Only)
16	150413	1	#10-16 x 1/2" Torx CrimpTite Screw
17	121010	1	L-70 Ground Lug
18	122631	1	6-Pin Connector ONLY
19	122705	*	Socket Terminal ONLY
20	122704	*	Pin Terminal ONLY
21	122630	1	6-Pin Connector ONLY
	137025	1	6/15 Position Strain Relief ... Not Illustrated
22	122625	1	15-Pin Connector ONLY
23	122704	12	Pin Terminal ONLY
24	122705	12	Socket Terminal ONLY
25	122626	1	15-Pin Socket Connector ONLY
---	122801	1	Pin/Socket Extraction Tool

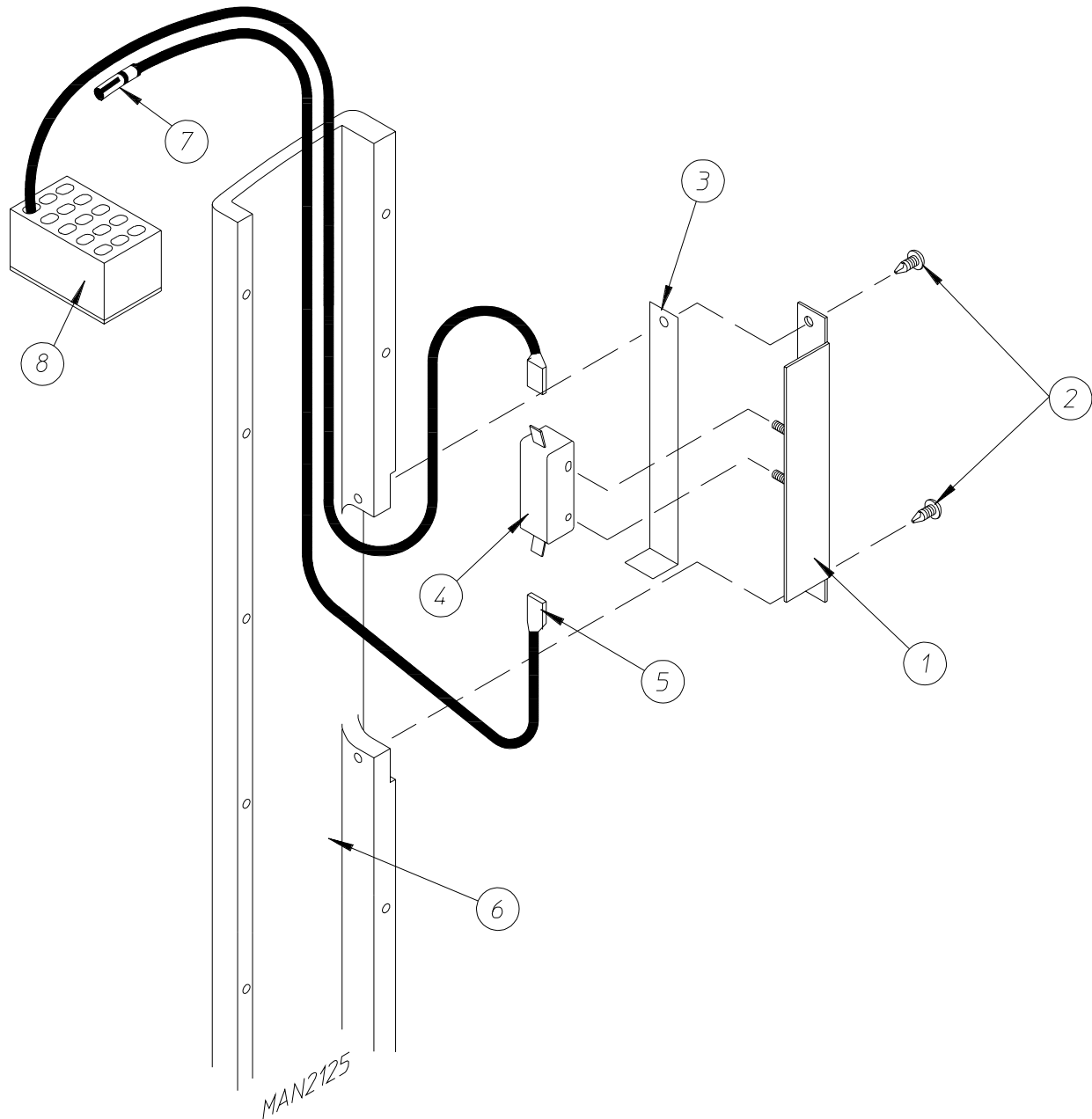
* As required (either 2 or 3).



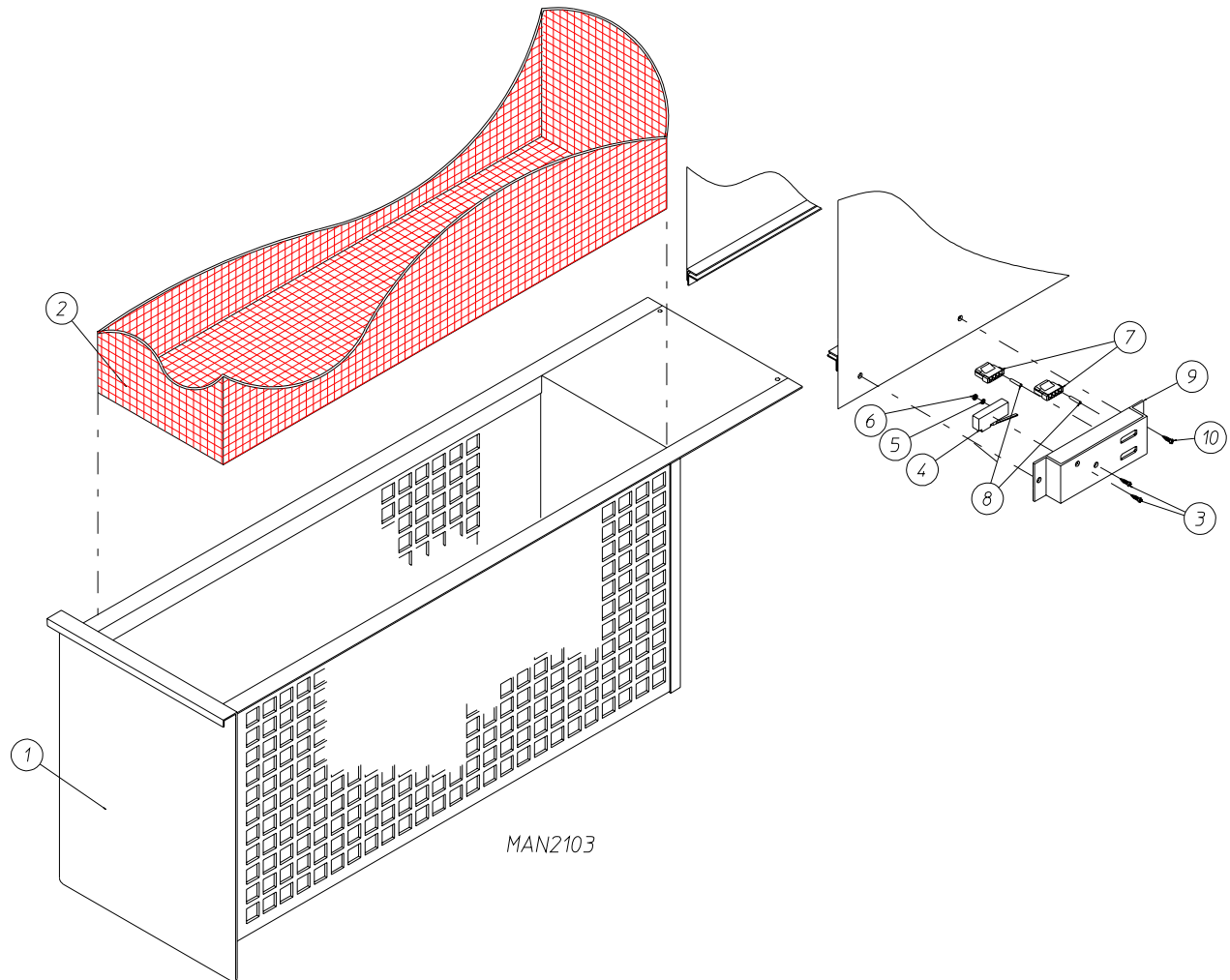
MAN0320

Illus. No.	Part No.	Qty.	Description
1	820012*	1	Right Hand Front Panel Assembly (includes illus. nos. 1, 4 and 5)
	820014	1	Stainless Steel Right Hand Front Panel Assembly (includes illus. nos. 1, 4, and 5)
2	150413	15	#10-16 x 1/2" Torx Crimptite Screw
3	150412	12	#10-16 x 3/4" Phillips Round Head Crimptite Screw
4	170340	3	3-1/2" Stainless Steel Striker Pad
5	154200	6	5/32" Pop Rivet
6	102308	1	Door Gasket ONLY (94" length)
7	102210	1	20-7/16" Door Glass ONLY
	170730	1	Glass Adhesive (10.3 oz. cartridge)
8	150401	3	#10-24 x 1-1/4" Phillips Taptite Screw
9	306801	9	Magnet Keeper ONLY
10	102102	6	1" x 3/4" x .197" Main Door Magnet ONLY
11	150430	9	#10-16 x 1/2" Phillips Pan Head Self Tapping Screw
12	180150	1	35" Granite Main Door Handle ONLY
13	800127*	1	Main Door Assembly Complete with Cross Gray Handle (includes illus. nos. 6 through 13)
	800128	1	Stainless Steel Main Door Assembly Complete with Cross Gray Handle (includes illus. nos. 6 through 13)
	800122*	1	Main Door Assembly with Glass and Gasket ONLY (includes illus. nos. 6, 7, and 13)
	800123	1	Stainless Steel Main Door Assembly with Glass and Gasket ONLY (includes illus. nos. 6, 7, and 13)
14	150430	10	#10 x 1/2" Phillips Pan Head Machine Screw
15	180155	1	35" Cross Gray Main Door Hinge Block ONLY

* Specify color when ordering.

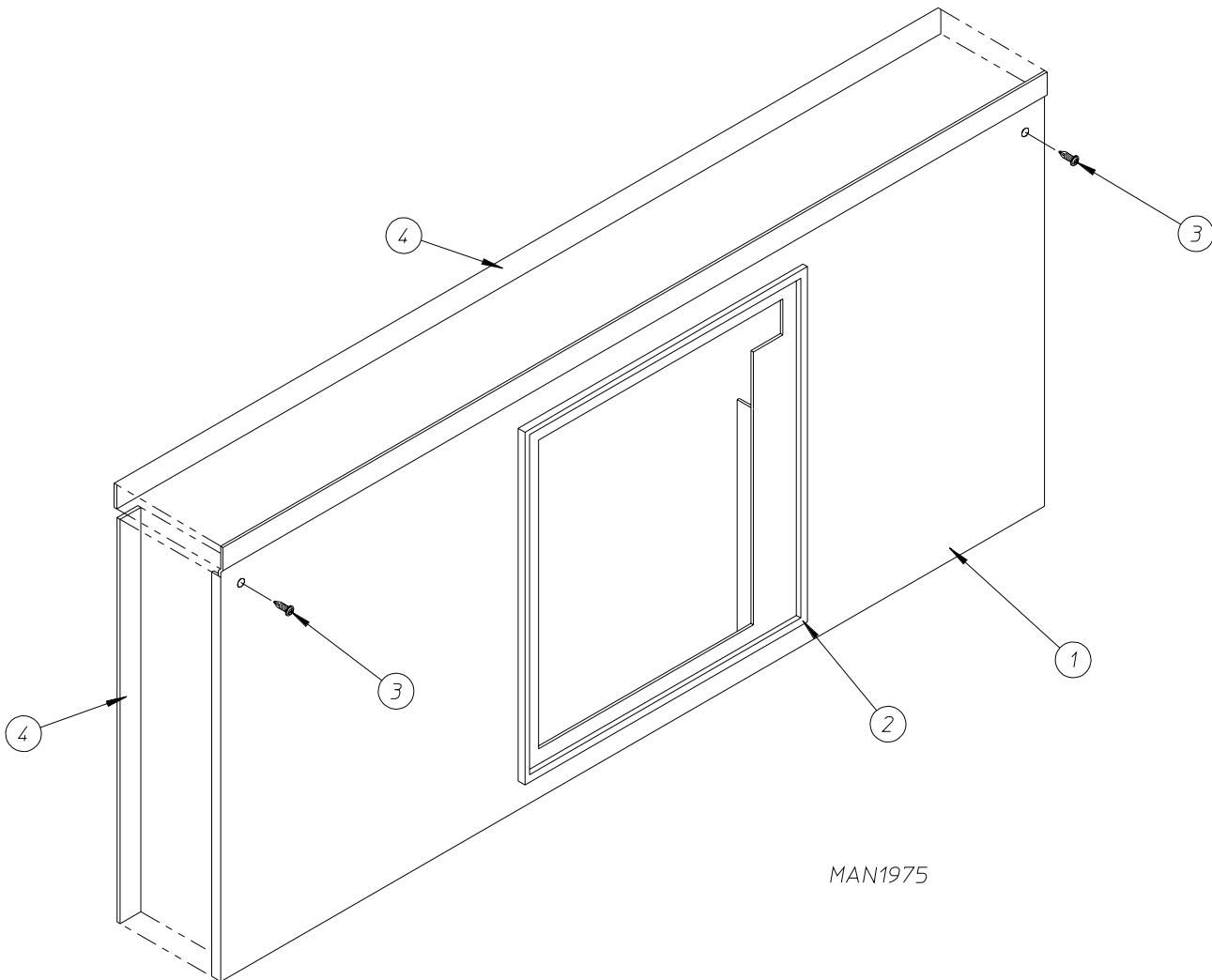


Illus. No.	Part No.	Qty.	Description
1	821098	1	Main Door Switch Assembly Complete (includes illus. nos. 1 through 4 and 6)
	821097	1	Main Door Switch Bracket Assembly ONLY
	102405	1	Main Door Switch Actuator ONLY
2	150413	2	#10-16 x 1/2" Torx Crimptite Screw
3	102405	1	Main Door Switch Actuator
4	137005	1	Main Door Switch ONLY
5	121028	2	1/4" x .032 Insulated Terminal ONLY
6	180155	1	35" Cross Gray Door Hinge Block ONLY
7	122705	2	Socket Mate to Split Pin
8	122626	1	15-Pin Cap Housing ONLY (M/L)



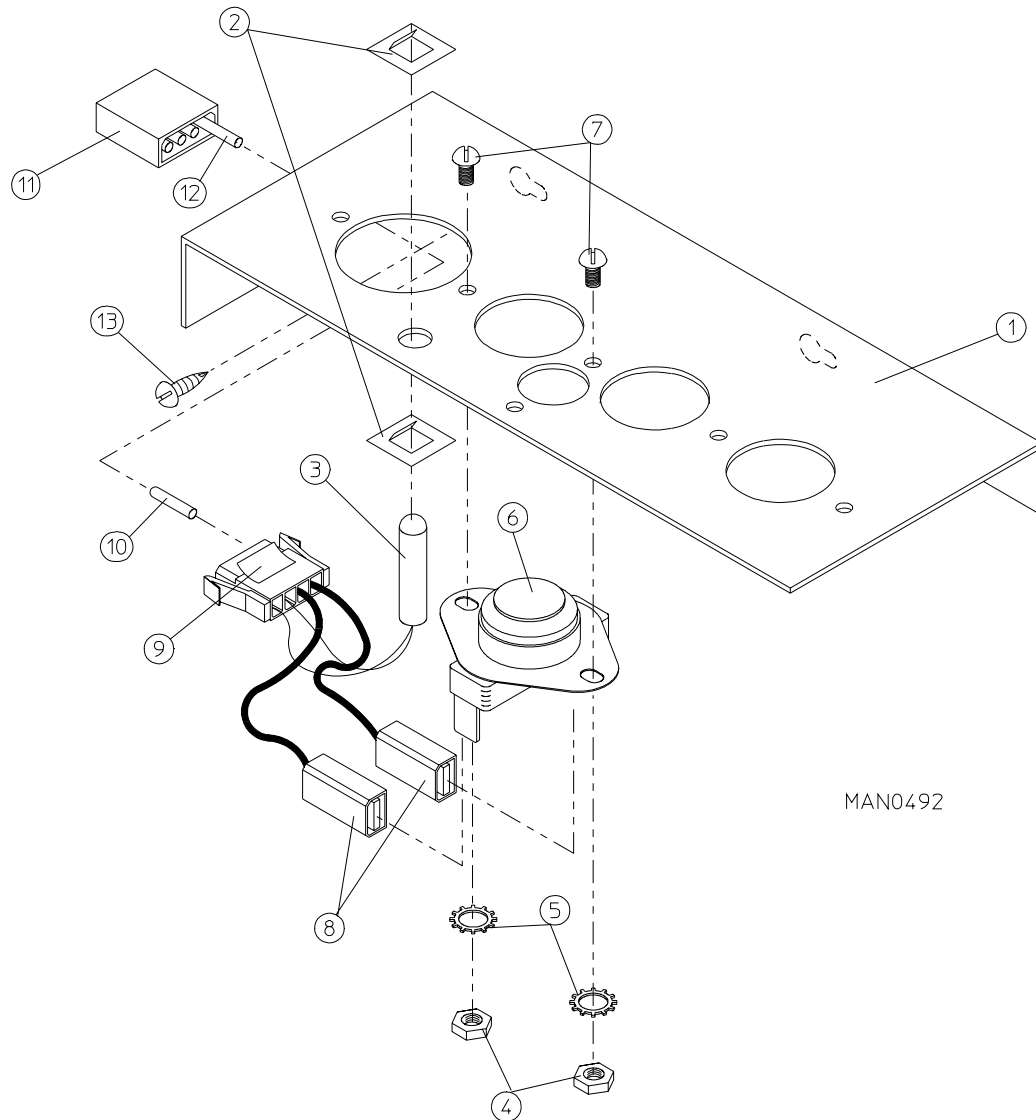
Illus. No.	Part No.	Qty.	Description
1	881141*	1	Lint Drawer Assembly with Safety Switch Actuator Complete
	881173	1	Stainless Steel Lint Drawer Assembly with Safety Switch Actuator
2	820017	1	Lint Screen Assembly ONLY
3	153562	2	#6-32 x 3/4" Clinch Stud
4	136992	1	Lint Drawer Switch ONLY
5	153010	2	#6 Star Washer
6	152000	2	#6-32 Hex Nut
7	122605	2	4-Pin Socket Connector ONLY
8	122701	4	Socket Terminal ONLY
	122801	1	Pin/Extraction Tool
9	821119	1	Lint Drawer Switch Assembly Complete (includes illus. nos. 3 and 9)
	821116	1	Lint Drawer Switch Mounting Bracket Assembly ONLY (includes illus. nos. 3 and 9)
10	150413	2	#10-16 x 1/2" Torx Crimpite Screw

* Specify color when ordering.

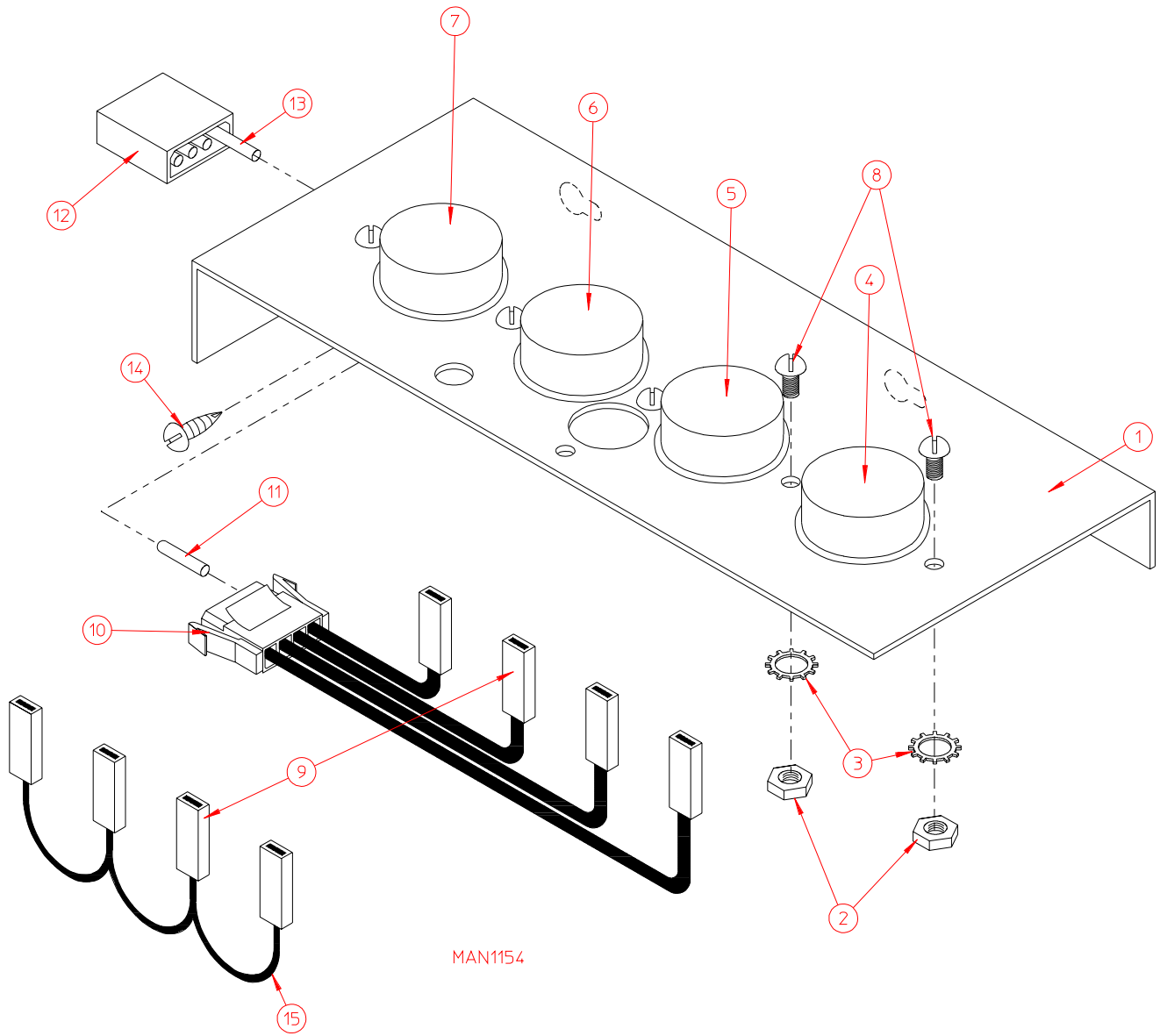


Illus. No.	Part No.	Qty.	Description
1	820015*	1	Drop Lint Drawer Assembly (includes illus. nos. 1, 2, and 4)
	820021	1	Stainless Steel Drop Lint Assembly
2	117602	5	Gasket (sold by the foot)
3	150413	5	#10-16 x 1/2" Torx Crimptite Screw
4	117604	8	Neo. Sponge Tape (sold by the foot)

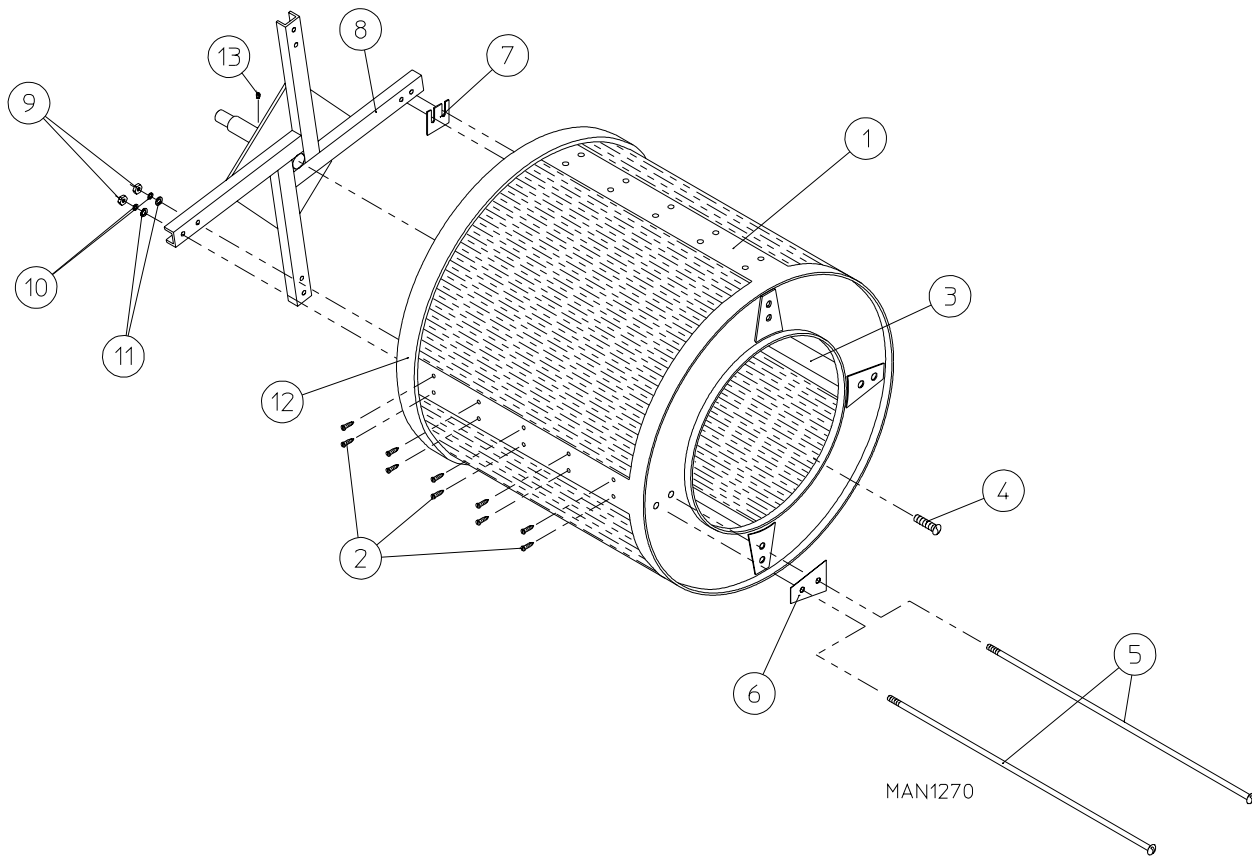
* Specify color when ordering.



Illus. No.	Part No.	Qty.	Description
1	820022	1	Microprocessor (computer) Temperature Sensor Bracket Assembly Complete (includes illus. nos. 1 through 10)
	331295	1	Temperature Sensor Bracket ONLY
2	154007	2	1/4" Tinnerman Push-on Fastener
3	880251	1	1/4" Temperature Sensor Probe Assembly (includes illus. nos. 2, 3, 8, 9, and 10)
4	152000	2	#6-32 Hex Nut
5	153010	2	#6 Star Washer
6	130112	1	225° Large Automatic Reset Thermostat ONLY
7	150000	2	#6-32 x 1/4" Round Head Machine Screw
8	121028	2	Insulated Terminal
9	122605	1	4-Pin Socket Connector ONLY
10	122701	4	Socket Terminal ONLY
11	122604	1	4-Pin Connector ONLY
12	122700	4	Pin Terminal ONLY
	122801	1	Pin/Socket Extraction Tool
13	150301	2	#8-18 x 7/16" Phillips Pan Head TEK Screw



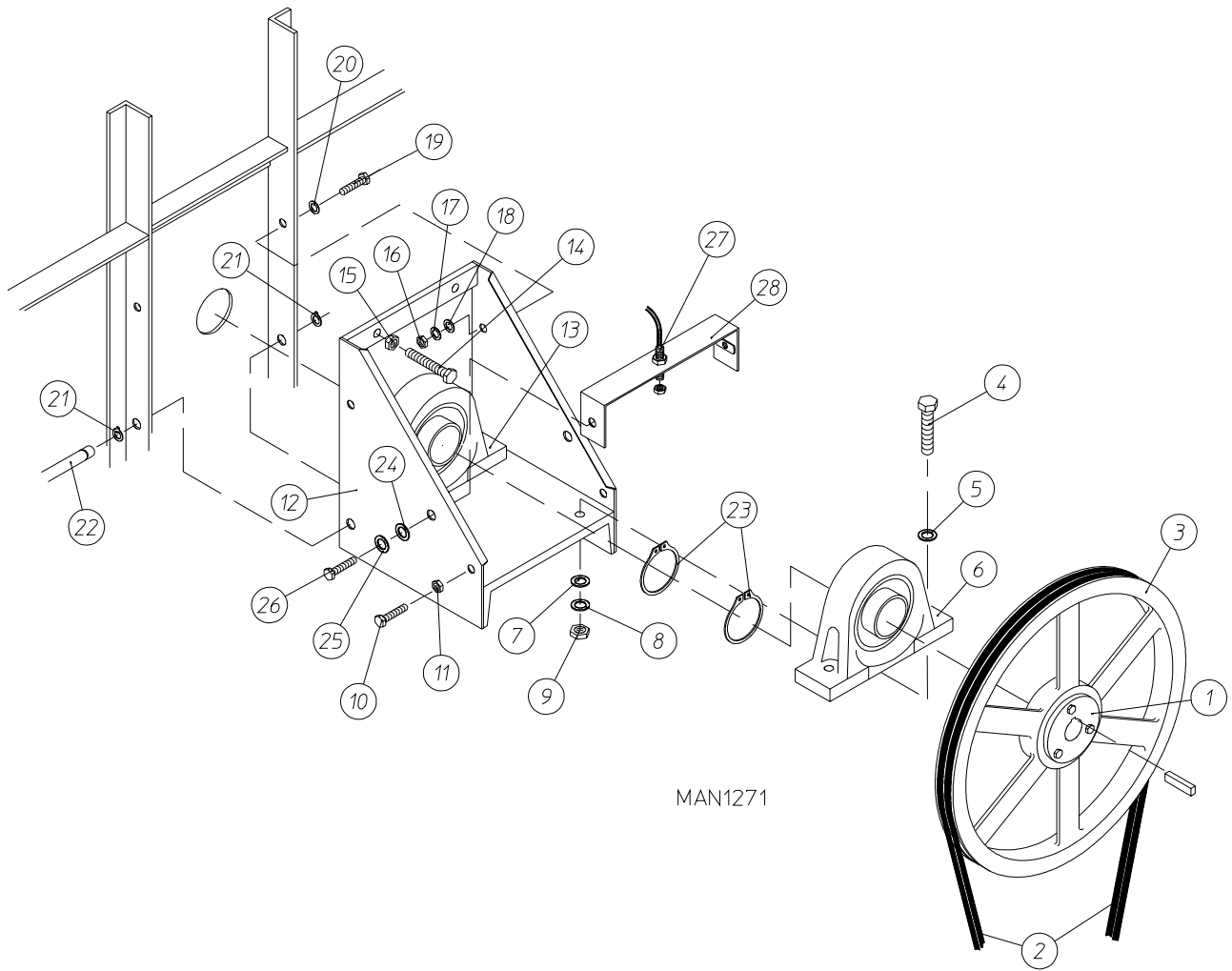
Illus. No.	Part No.	Qty.	Description
1	801404	1	Dual Timer Sensor Bracket Assembly Complete (includes illus. nos. 1 through 11 and 15)
	331295	1	Sensor Bracket ONLY
2	152000	5	#6-32 Hex Nut
3	153010	5	#6 Star Washer
4	130112	1	225° Large Thermostat ONLY
5	130107	1	160° Large Thermostat ONLY
6	130109	1	140° Large Thermostat ONLY
7	130101	1	180° Large Thermostat ONLY
8	150001	5	#6-32 x 1/2" Phillips Round Head Machine Screw
9	121028	8	Insulated Terminal
10	122605	1	4-Pin Socket (female) Connector ONLY
	840062	1	Sensor (4) Bracket Harness Assembly (includes illus. nos. 9, 10, and 11)
11	122701	4	Socket Terminal ONLY
12	122604	1	4-Pin Connector ONLY
13	122700	4	Pin Terminal ONLY
	122801	1	Pin/Extraction Tool
14	150301	2	#8-18 x 7/16" Phillips Pan Head TEK Screw
15	840065	1	Sensor Jumper (4) ONLY



Illus. No.	Part No.	Qty.	Description
1	820110*	1	Basket (Tumbler) ONLY without Felt Collar
	820111*	1	Stainless Steel Basket (Tumbler) ONLY without Felt Collar
	820020	1	Basket (Tumbler) and Support Assembly Complete (includes illus. nos. 1 through 12)
	820052	1	Basket (Tumbler) and Support Assembly Complete <i>with</i> Rotational Sensor Option (includes illus. nos. 1 through 12)
	820030	1	Stainless Steel Basket (Tumbler) and Support Assembly Complete (includes illus. nos. 1 through 12)
	820029	1	Stainless Steel Basket and Support Assembly Complete <i>with</i> Rotational Sensor Option (includes illus. nos. 1 through 12)
2	150413	40	#10-16 x 1/2" Torx Crimptite Screw
3	331105	4	Basket (Tumbler) Rib ONLY
	331106	4	Stainless Steel (Tumbler) Basket Rib ONLY
4	150500	1	5/16-18 x 3/4" Socket Button Head Screw
5	100910	8	1/2-13 x 44" Tie Rod
6	301700	4	Basket (Tumbler) Reinforcing Plate ONLY
7	301701	**	Basket (Tumbler) Shim ONLY
8	820115	1	Basket (Tumbler) Support ONLY
	820116	1	Basket (Tumbler) Support ONLY <i>with</i> Rotational Sensor Option
9	152011	8	1/2-13 Hex Nut
10	153026	8	1/2" Lock Washer
11	153011	8	9/16" Flat Washer
12	116006	1	Felt Collar ONLY
	401010	1	#847 Adhesive for Felt Collar (5 oz. Tube)
13	821002	1	Rotational Magnet Holder Assembly (for Microprocessor Models <i>with</i> Optional Rotational Sensor)

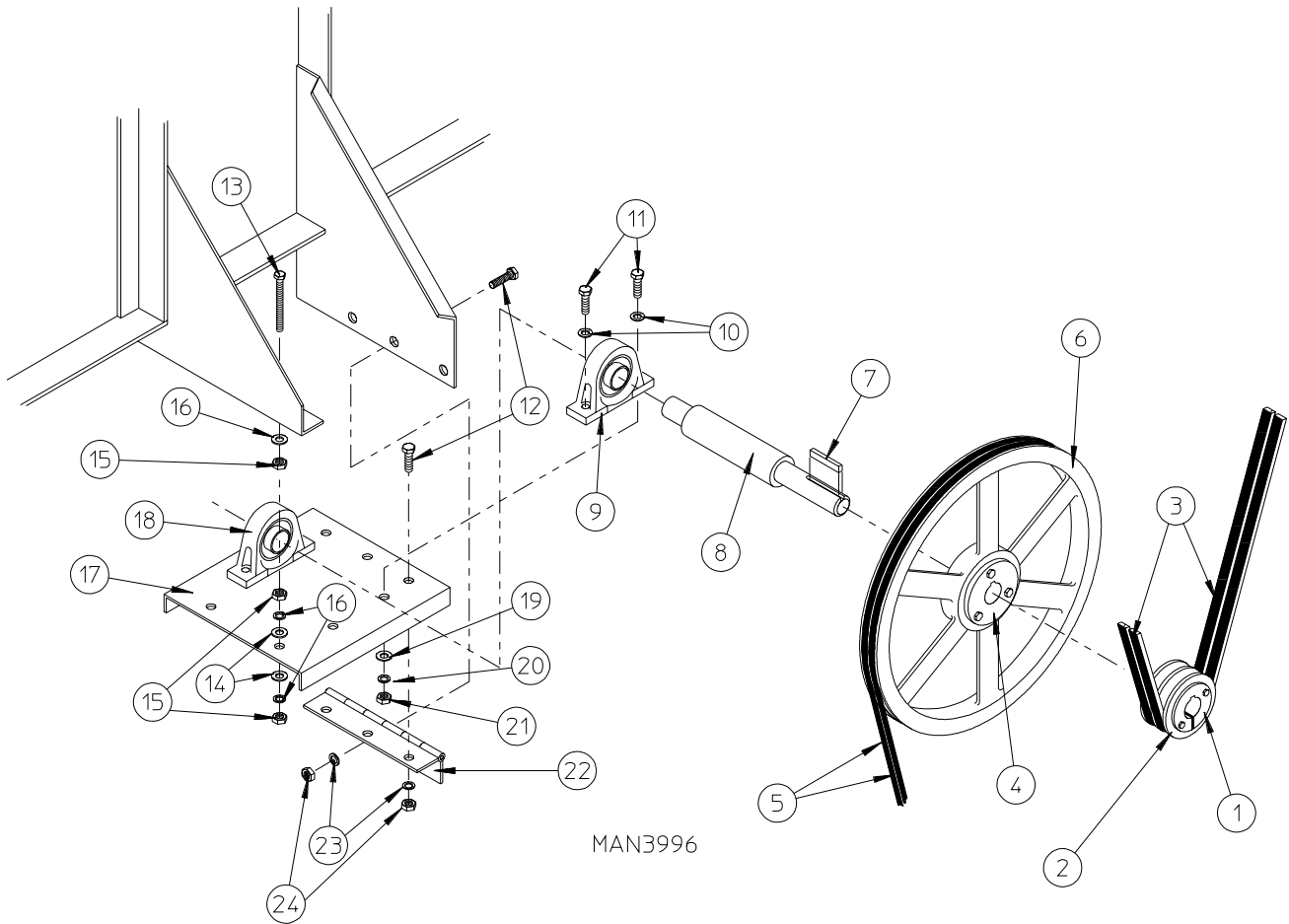
* Felt collar *is not included* and **must be** ordered separately.

** As required.



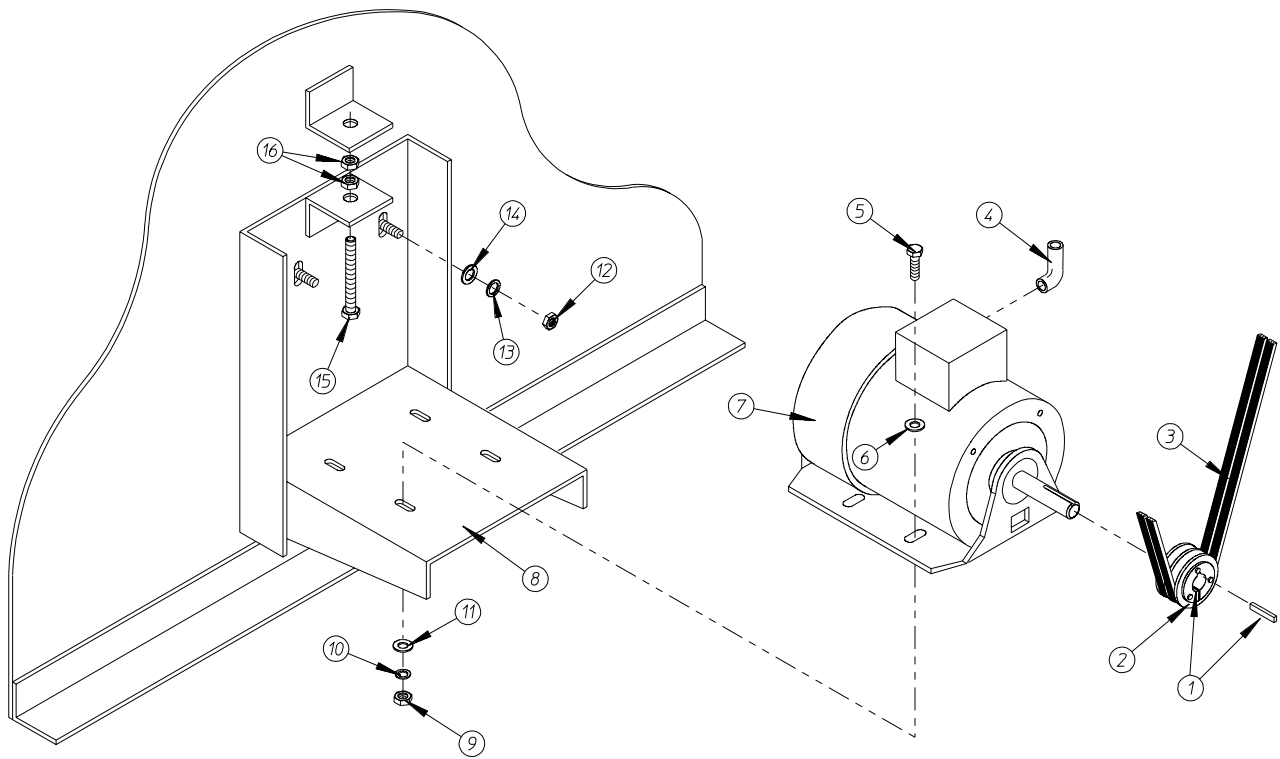
Illus. No.	Part No.	Qty.	Description
1	101137	1	2-1/4" SFX Bushing
2*	100135	2	AP-74 V-Belt
3	101136	1	20" Basket (Tumbler) Pulley
4	150602	4	5/8-11 x 3" Hex Head Machine Bolt
5	153016	4	5/8" Flat Washer
6	880204	1	2-1/4" Pillow Block Bearing ONLY
7	153016	4	5/8" Flat Washer
8	153015	4	5/8" Lock Washer
9	152010	4	5/8-11 Hex Nut
10	150600	2	3/8-16 x 1-1/2" Hex Head Machine Bolt
11	152005	2	3/8-16 Hex Nut
12	801102	1	Tumbler Bearing Mount Assembly (includes illus. nos. 4 through 13)
13	880204	1	2-1/4" Pillow Block Bearing ONLY
14	150603	2	1/2-13 x 3" Square Head Machine Bolt
15	152011	2	1/2-13 Hex Nut
16	152005	2	3/8-16 Hex Nut
17	153005	2	3/8" Lock Washer
18	153004	4	3/8" Flat Washer
19	150600	2	3/8-16 x 1-1/2" Hex Head Machine Bolt
20	153004	2	3/8" Flat Washer
21	100801	2	5/8" Retaining Ring
22	301810	1	5/8" Hinge Pin
23	100811	2	2-1/4" Retaining Ring
24	153018	2	1/4" Flat Washer
25	153007	2	1/4" Lock Washer
26	150512	2	1/4-20 x 1/2" Hex Head Machine Bolt
27	824807	1	Rotational Sensor Assembly
28	880841	1	Rotational Sensor Mounting Bracket

* Replace in matched sets (both belts).



Illus. No.	Part No.	Qty.	Description
1	101110	1	1" Bushing
2	101113	1	2A3.0 Pulley
3*	100135	1	AP-74 V-Belt
4	101107	1	1" SK Bushing
5*	100170	1	3V-710 V-Belt
6	101112	1	19" Idler Pulley
7	100715	1	1/4" x 1/4" x 4-5/8" Key
8	301852	1	1" Idler Shaft ONLY
9	880205	1	1" Pillow Block Bearing ONLY
10	153004	4	3/8" Flat Washer
11	150600	4	3/8-16 x 1 1/2" Hex Head Machine Bolt
12	150512	6	1/4-20 x 1/2" Hex Head Machine Bolt
13	150509	2	5/16-18 x 3" Hex head Machine Bolt
14	153001	4	5/16" Flat Washer
15	152004	6	5/16" Hex Nut
16	153002	8	5/16" Lock Washer
17	801001	1	Idler Bearing Mount Assembly Complete (includes illus. nos. 8 through 11 and 17 through 25)
	311401	1	Idler Bearing Mount ONLY
18	880205	1	1" Pillow Block Bearing ONLY
19	153004	4	3/8" Flat Washer
20	153005	4	3/8" Lock Washer
21	152005	4	3/8-16 Hex Nut
22	103005	1	Idler Adjustment Hinge ONLY
23	153007	6	1/4" Lock Washer
24	152002	6	1/4-20 Hex Nut

* Replace in matched sets (both belts).



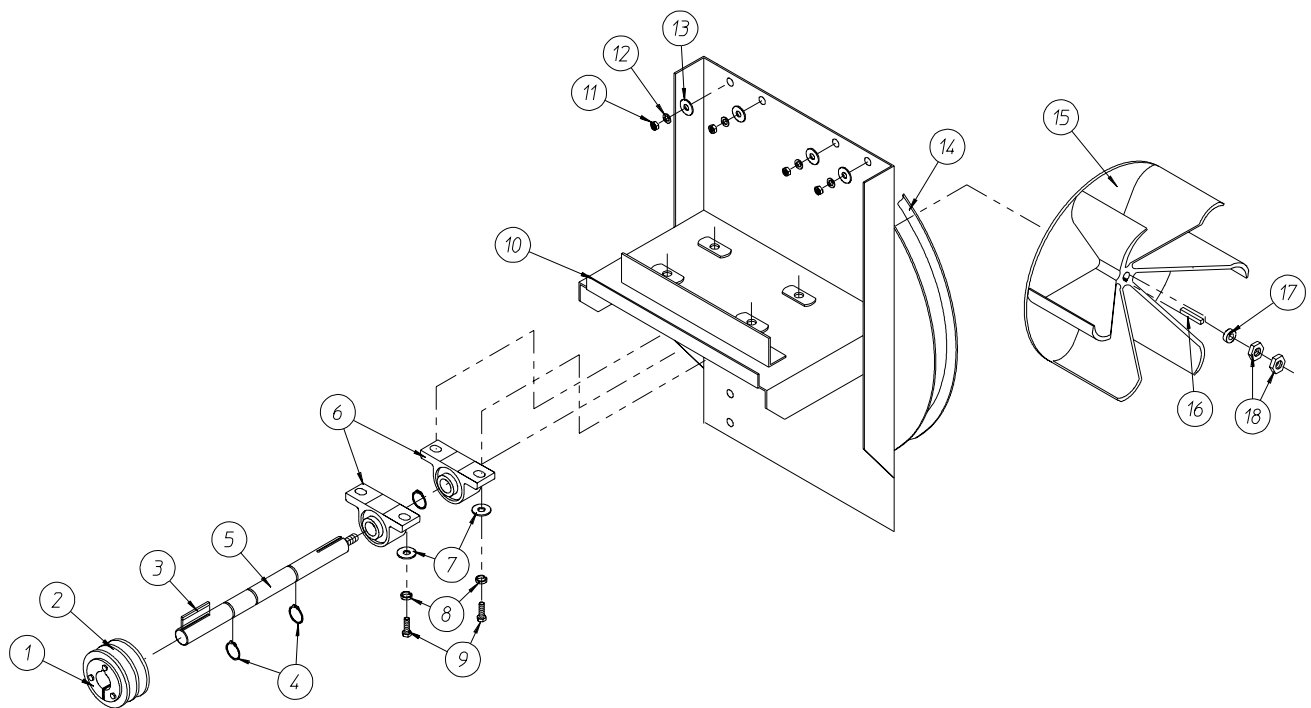
MAN0329

Illus. No.	Part No.	Qty.	Description
1	101121	1	5/8" SK Bushing
2	101114	1	2.65" Pulley (for 60 Hz Models Only)
	101120	1	3.15" Pulley (for 50 Hz Models Only)
3*	100170	1	3V-710 V-Belt
4	120200	1	3/8" x 90° Connector
5	150501	4	5/16-18 x 3/4" Hex Head Machine Bolt
6	153001	4	5/16" Flat Washer
7	100029	1	3/4 HP 208/230/460v 3ø 50/60 Hz and 380v 3ø 50 Hz T.E.F.C. Motor (56Z Frame)
	100084	1	3/4 HP 380v 3ø 60 Hz T.E.F.C. Motor (56Z Frame)
8	800952	1	Basket (Tumbler) Motor Mount ONLY (56Z Frame)
	800953**	1	3/4 HP 208/230/460v 3ø 60 Hz Basket Motor Mount Assembly Complete (includes illus. nos. 1, 2, 4 through 11, 15, and 16)
	800955**	1	3/4 HP 208/230/380/460v 3ø 50 Hz Motor Mount Assembly Complete (includes illus. nos. 1, 2, 4 through 11, 15, and 16)
	800956**	1	3/4 HP 380v 3ø 60 Hz Basket Motor Mount Assembly Complete (includes illus. nos. 1, 2, 4 through 11, 15, and 16)
9	152004	4	5/16-18 Hex Nut
10	153002	4	5/16" Lock Washer
11	153001	4	5/16" Flat Washer
12	152004	4	5/16-18 Hex Nut
13	153002	4	5/16" Lock Washer
14	153001	4	5/16" Flat Washer
15	150619	1	3/8-16 x 3" Hex Head Machine Bolt
16	152005	2	3/8-16 Hex Nut

* Replace in matched sets (both belts).

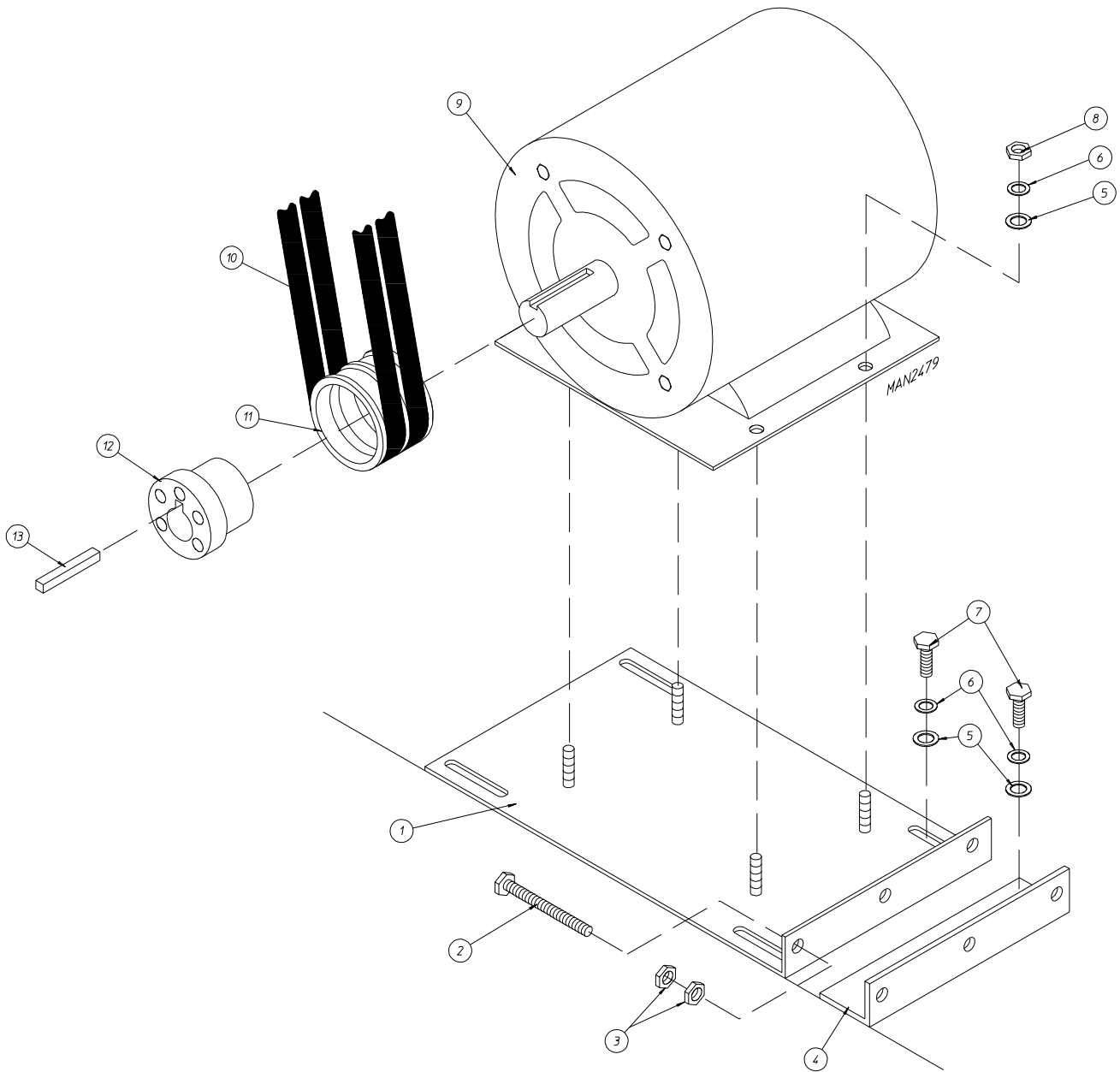
** Specify voltage when ordering.

IMPORTANT: For voltages higher than 460 VAC, contact the factory for correct part number of motor mount assembly.



MAN2931

Illus. No.	Part No.	Qty.	Description
1	101194	1	SDS x 1-3/8" Bushing (for 60 Hz Models Only)
	101152	1	SH x 1-3/8" Bushing (for 50 Hz Models Only)
2	101147	1	2B x 4.8 Pulley (for 60 Hz Models Only)
	101148	1	2B x 4.0 Pulley (for 50 Hz Models Only)
3	100706	1	5/16" x 5/16" x 1-3/8" Key
4	100811	2	Retaining Ring
5	317400	1	Impellor (Fan/Blower) Shaft
6	880879	2	1-3/8" Pillow Block Bearing with Set Screws and Grease Fitting
	154326	4	5/16 x 3/8" Allen Set Screw ONLY
	170512	2	1/4-28 N.P.T. Grease Fitting ONLY
7	153004	4	3/8" Flat Washer
8	153005	4	3/8" Lock Washer
9	150601	4	3/8-16 x 2" Hex Head Machine Bolt
10	813002	1	Impellor (Fan/Blower) Shaft Mount ONLY
	813023	1	Impellor (Fan/Blower) Assembly Complete (includes illus. nos. 1 through 9 and 13 through 17) For 60 Hz Models ONLY
	813024	1	Impellor (Fan/Blower) Assembly Complete (includes illus. nos. 1 through 9 and 13 through 17) For 50 Hz Models ONLY
11	152005	8	3/8-16 Hex Nut
12	153005	8	3/8" Lock Washer
13	153004	8	3/8" Flat Washer
14	117604	4	Neo. Sponge Tape (sold by the foot)
15	100603	1	16" Impellor (Fan/Blower) with 3/4" Bore
16	100714	1	3/16" x 3/16" x 1 7/8" Key
17	153065	1	1/2" x 1-1/2" Flat Washer (for models mfd. as of May 19, 1998)
	153050	1	1/2" x 1-1/16" Flat Washer (for models mfd. prior to May 19, 1998)
18	152006	2	1/2-20 Left Hand Jam Nut

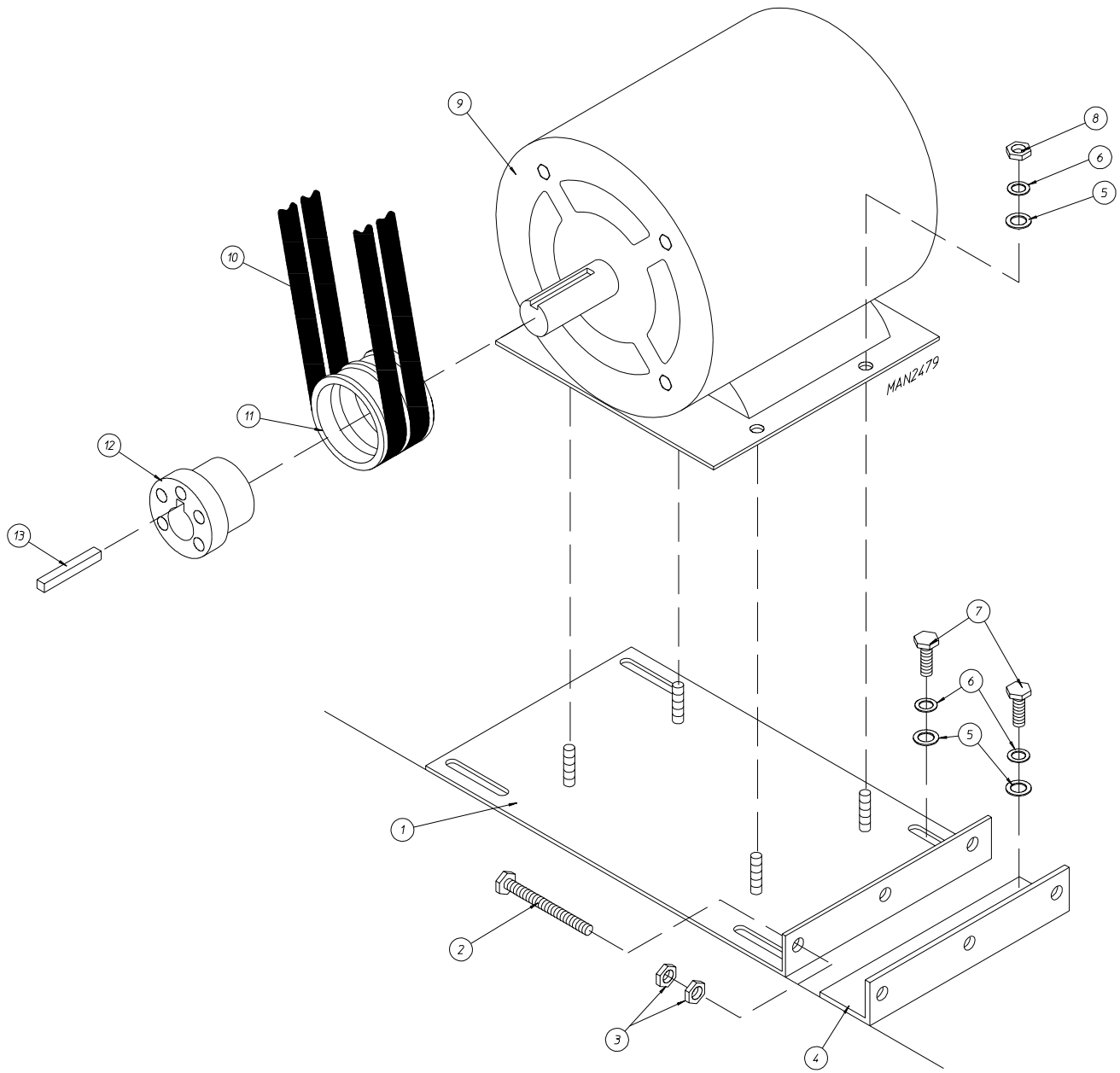


for Gas Models ONLY

Illus. No.	Part No.	Qty.	Description
1	802253	1	Adjustable Plate Assembly (for models mfd.as of July 20, 1998)
	802229	1	Adjustable Plate Assembly (for models mfd. prior to July 20, 1998)
	813025	1	Blower Motor Mount Assembly Complete (includes illus. nos. 1 through 13) <i>For 208-230/460 volt - 60 Hz and 380/460 volt - 50 Hz models ONLY</i>
	813049	1	Blower Motor Mount Assembly Complete (includes illus. nos. 1 through 13) <i>(for 380 volt/60 Hz models Only)</i>
2	152034	2	3/8-16 x 3-1/2" Hex Head Bolt
3	152005	4	3/8-16 Hex Nut
4	802232	1	Adjustable Angle Assembly
5	153001	11	5/16" Flat Washer
6	153002	11	5/16" Lock Washer
7	150501	7	5/16-18 x 3/4" Hex Head Machine Bolt
8	152004	4	5/16-18 Hex Nut
9	882078	1	3 HP Blower Motor with Adjusting Plate <i>(for 208-230/460 volt - 60 Hz and 380/460 volt - 50 Hz models Only)</i>
	100043	1	3 HP Blower Motor <i>(for 208-230/460 volt - 60 Hz and 380-416 volt - 50 Hz models Only)</i> For models mfd. as of January 7, 1999
	100081	1	3 HP Blower Motor <i>(for 380 volt/60 Hz models Only)</i> For models mfd. prior to January 7, 1999
10*	100169	1	5L-350 V-Belt
11	101135	1	2B x 5.4 Motor Pulley
12	101138	1	SDS x 1-1/8" Bore Bushing
13	100706	1	5/16" x 5/16" x 1-3/8" Key

* Replace in matched sets (both belts)..

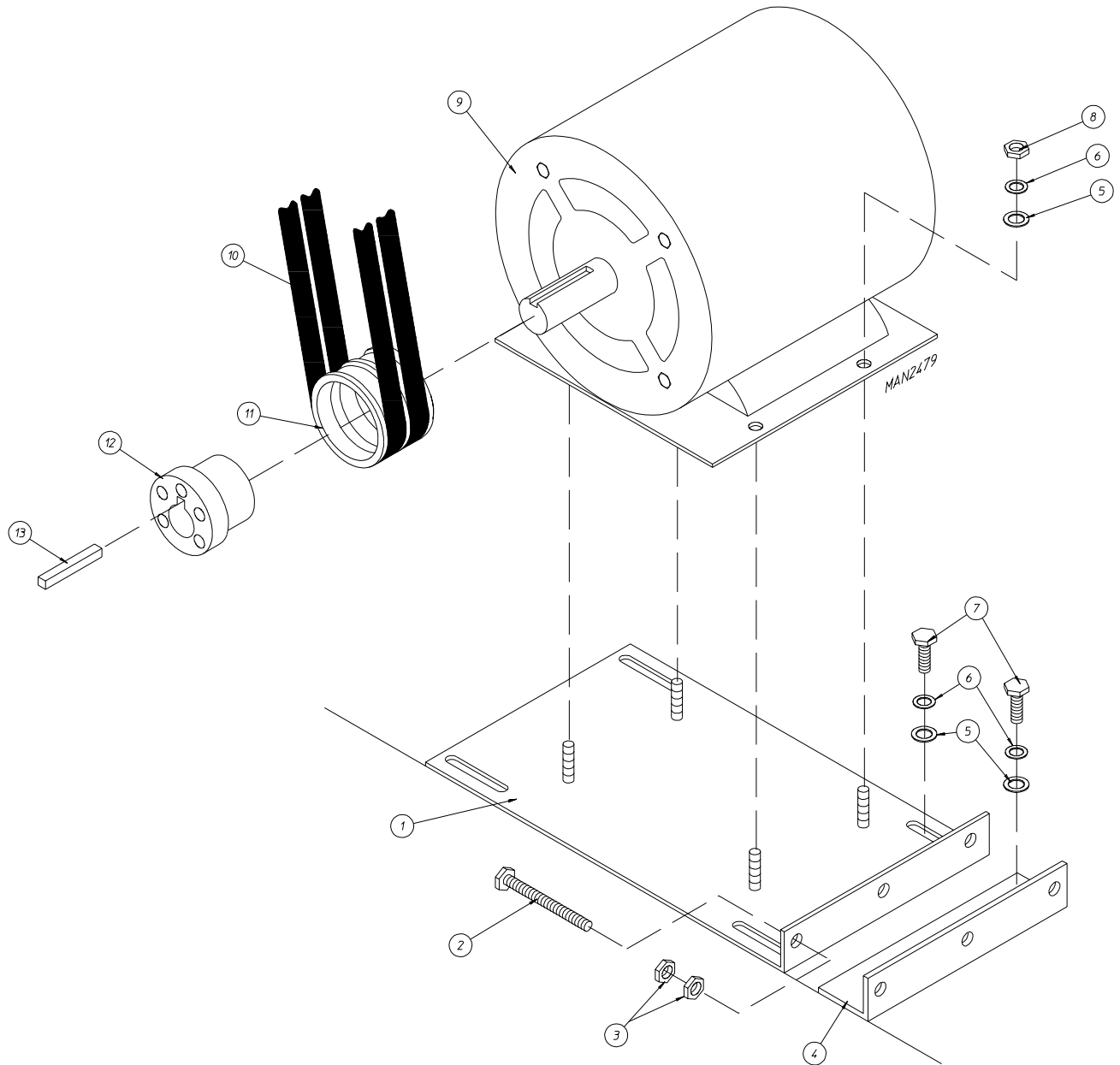
for Electric Models ONLY



for Electric Models ONLY

Illus. No.	Part No.	Qty.	Description
1	802253	1	Adjustable Plate Assembly (for models mfd.as of July 20, 1998)
	802229	1	Adjustable Plate Assembly (for models mfd. prior to July 20, 1998)
	813028	1	60 Kw Electric Blower Motor Mount Assembly Complete (includes illus. nos. 1 through 13) <i>For 208-230/460 volt - 60 Hz and 380/460 volt - 50 Hz models ONLY</i>
	813052	1	60 Kw Electric Blower Motor Mount Assembly Complete (includes illus. nos. 1 through 13) <i>For 380 volt/60 Hz ONLY</i>
	813025	1	72 Kw Electric Blower Motor Mount Assembly Complete (includes illus. nos. 1 through 13) <i>For 208-230/460 volt - 60 Hz and 380/460 volt - 50 Hz models ONLY</i>
	813049	1	72 Kw Electric Blower Motor Mount Assembly Complete (includes illus. nos. 1 through 13) <i>For 380 volt/60 Hz models ONLY</i>
	813070	1	80 Kw Electric Blower Motor Mount Assembly Complete (includes illus. nos. 1 through 13) <i>For 208-230/460 volt - 60 Hz and 380-416 volt - 50 Hz models ONLY</i> (for models mfd. as of November 2, 1998)
	813027	1	80 Kw Electric Blower Motor Mount Assembly Complete (includes illus. nos. 1 through 13) <i>For 208-230/460 volt - 60 Hz and 380/460 volt - 50 Hz models ONLY</i> (for models mfd. prior to November 2, 1998)
	813051	1	80 Kw Electric Blower Motor Mount Assembly Complete (includes illus. nos. 1 through 13) <i>(for 380 volt/60 Hz models Only)</i>
2	152034	2	3/8-16 x 3-1/2" Hex Head Machine Bolt
3	152005	4	3/8-16 Hex Nut
4	802232	1	Adjustable Angle Assembly
5	153001	11	5/16" Flat Washer
6	153002	11	5/16" Lock Washer
7	150501	7	5/16-18 x 3/4" Hex Head Machine Bolt
8	152004	4	5/16-18 Hex Nut
9	882078	1	3 HP Blower Motor with Adjusting Plate <i>(for 208-230/460 volt - 60 Hz and 380/460 volt - 50 Hz models Only)</i>
	100043	1	3 HP Blower Motor <i>(for 208-230/460 volt - 60 Hz and 380-416 volt - 50 Hz models Only)</i> For models mfd. as of January 7, 1999
	100081	1	3 HP Blower Motor <i>(for 380 volt/60 Hz models Only)</i> For models mfd. prior to January 7, 1999
10*	100156	1	5L-330 V-Belt <i>(for 60 Kw Electric Oven models Only)</i>
	100169	1	5L-350 V-Belt <i>(for 72 Kw Electric Oven models Only)</i>
	100168	1	5L-360 V-Belt <i>(for 80 Kw Electric Oven models Only)</i>
11	101147	1	2B x 4.8 Motor Bushing <i>(for 60 Kw Electric Oven models Only)</i>
	101135	1	2B x 5.4 Motor Bushing <i>(for 72 Kw Electric Oven models Only)</i>
	101185	1	2B x 6.2 Motor Bushing <i>(for 80 Kw Electric Oven models Only)</i>
12	101138	1	SDS x 1-1/8" Bore Bushing
13	100706	1	5/16" x 5/16" x 1-3/8" Key

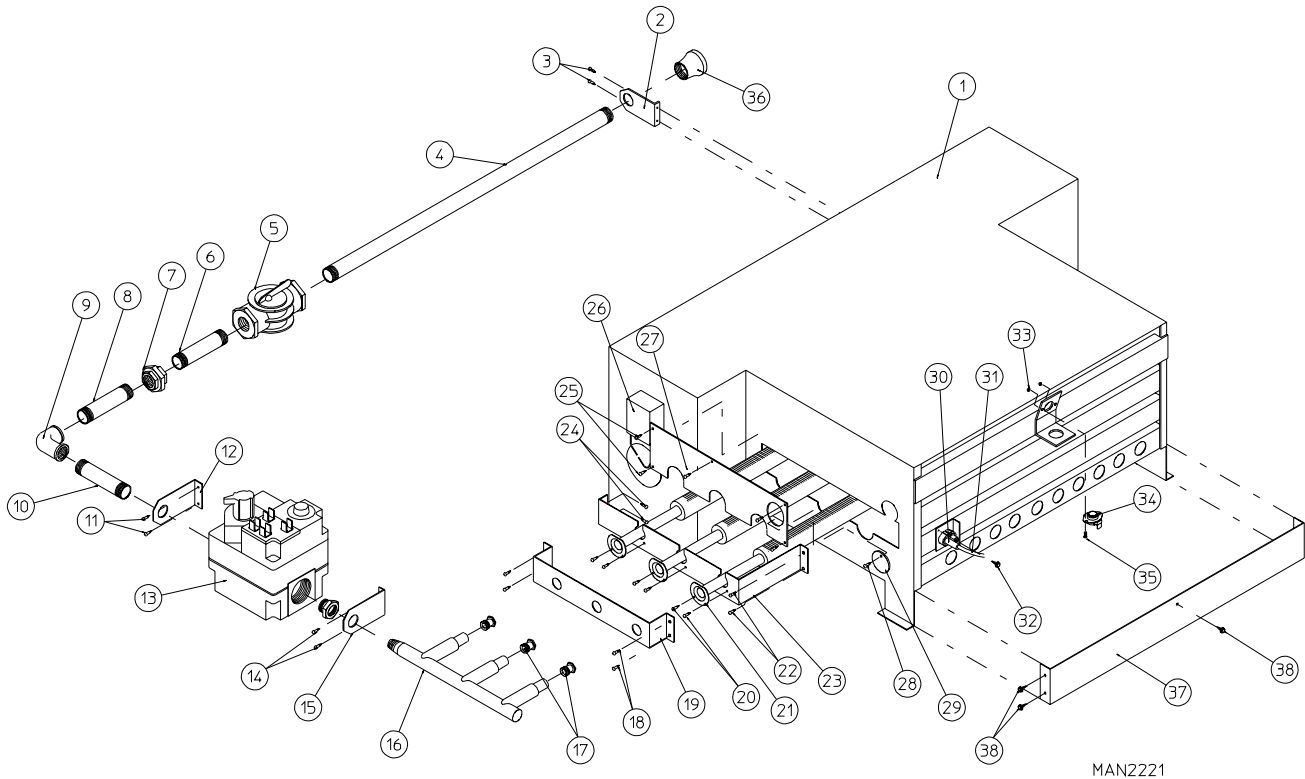
* Replace in matched sets (both belts).



for Steam Models ONLY

Illus. No.	Part No.	Qty.	Description
1	802253	1	Adjustable Plate Assembly (for models mfd.as of July 20, 1998)
	802229	1	Adjustable Plate Assembly (for models mfd. prior to July 20, 1998)
	813069	1	Blower Motor Mount Assembly Complete (includes illus. nos. 1 through 13) <i>For 380-416 volt/50 Hz models ONLY</i> (for models mfd. as of November 2, 1998)
	813026	1	Blower Motor Mount Assembly Complete (includes illus. nos. 1 through 13) <i>For 208-230/460 volt - 60 Hz and 380/460 volt - 50 Hz models ONLY</i> (for models mfd. as of November 2, 1998)
	813069	1	Blower Motor Mount Assembly Complete (includes illus. nos. 1 through 13) <i>For 380-416 volt/50 Hz models ONLY</i> (for models mfd. as of January 7, 1999)
	813050	1	Blower Motor Mount Assembly Complete (includes illus. nos. 1 through 13) <i>For 380 volt/60 Hz models ONLY</i> (for models mfd. prior to January 7, 1999)
2	152034	2	3/8-16 x 3-1/2" Hex Head Bolt
3	152005	4	3/8-16 Hex Nut
4	802232	1	Adjustable Angle Assembly
5	153001	11	5/16" Flat Washer
6	153002	11	5/16" Lock Washer
7	150501	7	5/16-18 x 3/4" Hex Head Machine Bolt
8	152004	4	5/16-18 Hex Nut
9	882078	1	3 HP Blower Motor with Adjusting Plate <i>(for 208-230/460volt - 60 Hz and 380/460 volt - 50 Hz models Only)</i>
	100043	1	3 HP Blower Motor <i>(for 208-230/460 volt - 60 Hz and 380-416 volt - 50 Hz models Only)</i> For models mfd. as of January 7, 1999
	100081	1	3 HP Blower Motor <i>(for 380 volt/60 Hz models Only)</i> For models mfd. prior to January 7, 1999
10*	100168	1	5L-360 V-Belt
11	101185	1	2B x 6.2 Motor Bushing
12	101138	1	SDS x 1-1/8" Bore Bushing
13	100706	1	5/16" x 5/16" x 1-3/8" Key

* Replace in matched sets (both belts).



MAN2221

Illus. No.	Part No.	Qty.	Description
1	880874*	1	DSI Natural Gas Burner Assembly Complete Less Orifices (includes illus. nos. 1 through 16 and 18 through 36)
	880875*	1	DSI L.P. Gas Burner Assembly Complete Less Orifices (includes illus. nos. 1 through 16 and 18 through 38)
	820201	1	Burner Box ONLY
2	331291	1	Pipe Bracket
3	150413	2	#10-16 x 1/2" Torx Crimptite Screw
4	142813	1	3/4" x 32-1/2" Pipe
5	141300	1	3/4" Union Shut-off
6	142701	1	3/4" Closed Nipple
7	142601	1	3/4" Union
8	142710	1	3/4" x 4" Nipple
9	142504	1	3/4" x 90° Elbow
10	142734	1	3/4" x 5 1/2" Nipple
11	150413	2	#10-16 x 1/2" Torx Crimptite Screw
12	331291	1	Gas Valve Pipe Bracket

for Gas Models ONLY

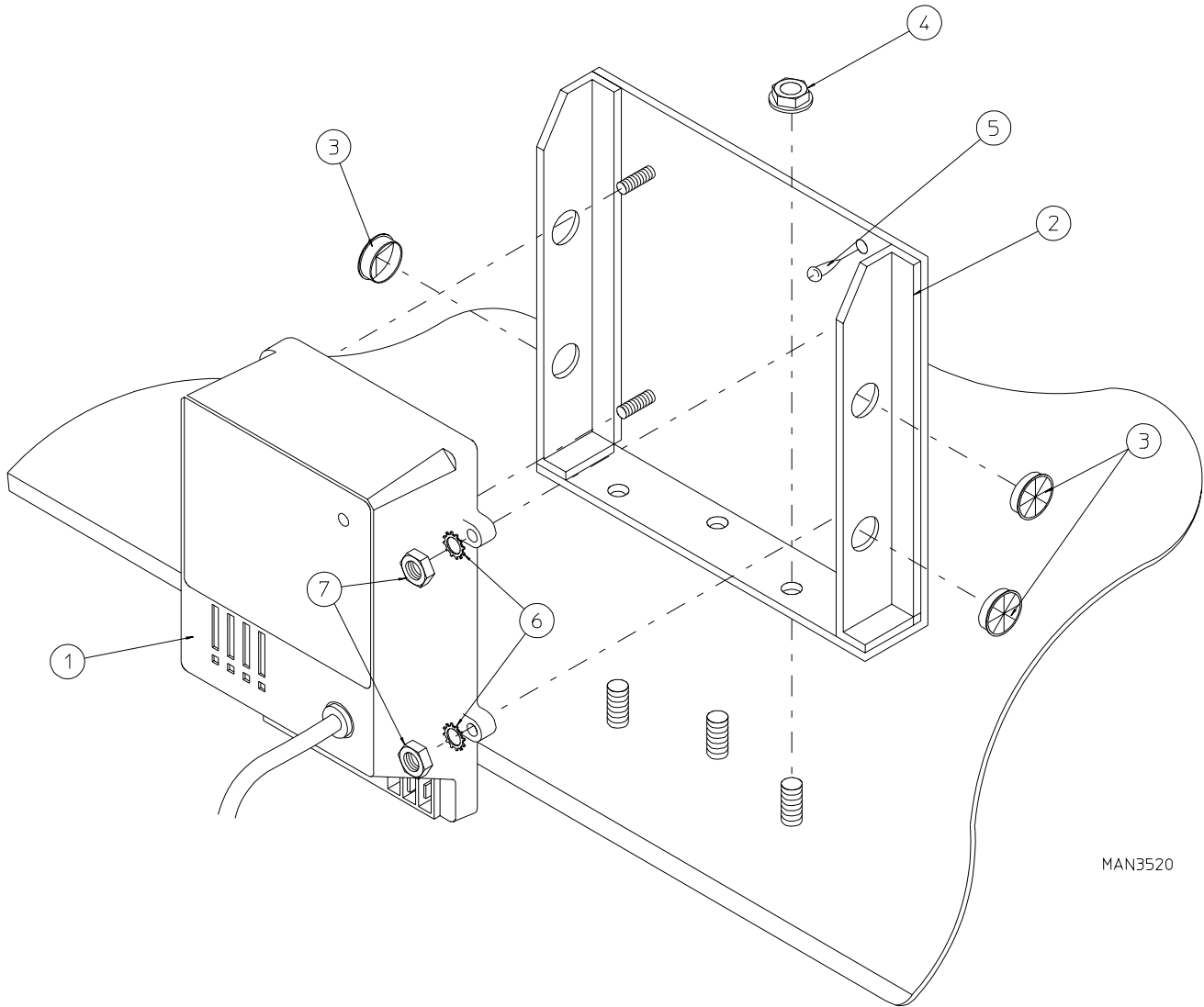
Illus. No.	Part No.	Qty.	Description
13	140026	1	3/4" DSI 24 VAC Redundant (natural gas) Gas Valve (3/4" to 1/2" Reducing Bushing included with Gas Valve)
	140411	-	24 VAC Gas Valve L.P. (liquid propane) Conversion Kit
14	150413	2	#10-16 x 1/2" Torx Crimptite Screw
15	331291	1	ADG-120ES Gas Valve Pipe Bracket
16	141208	1	3-Port Manifold
17**	140832	3	#4 Burner Orifice (natural gas) ONLY
	140819	3	#30 Burner Orifice (liquid propane gas) ONLY
18	150413	4	#10-16 x 1/2" Torx Crimptite Screw
19	331288	1	Manifold Support ONLY
20	150413	6	#10-16 x 1/2" Torx Crimptite Screw
21	141110	3	Burner Tube ONLY
22	150413	2	#10-16 x 1/2" Torx Crimptite Screw
23	331287	1	Burner Tube Support ONLY
24	150413	2	#10-16 x 1/2" Torx Crimptite Screw
25	150413	6	#10-16 x 1/2" Torx Crimptite Screw
26	-----	1	Sail Switch (refer to Sail Switch Assembly on page 37)
27	331289	1	Burner Box Cover Plate ONLY
28	150413	1	#10-16 x 1/2" Phillips Round Head Screw
29	331290	1	Ignitor/Flame-Probe Sight Hole Disc ONLY
30	880325	1	Ignitor HV Wire / Connector ONLY (includes high voltage [HV] wire and connector)
	305410	1	DSI Ignitor Gap Feeler Gauge ... Not Illustrated
31	880330	1	DSI Ignitor HV Wire/Connector ONLY
32	150413	2	#10-16 x 1/2" Phillips Round Head Screw
33	151000	2	#6-32 Pal Nut
34	130201****	1	330° Hi-Limit Small Man/Reset Thermostat ONLY (for models mfd. as of May 26, 1998)
	130401	1	330° Hi-Limit Thermostat ONLY (for models mfd. prior to May 26, 1998)
35	150001	2	#6-32 x 1/2" Round Head Machine Screw
36	142924	1	1" to 3/4" Reducing Coupling
37***	332256	1	L.P. Burner Baffle ONLY
38***	150413	5	#10-16 x 1/2" Torx Crimptite Screw
---	880886**	1	ADG-120ES (with 3/4" White-Rodgers Gas Valve) DSI L.P. Conversion Kit

* Orifices **are not included** and **must be** ordered separately.

** Consult factory for elevations over 2,000 feet.

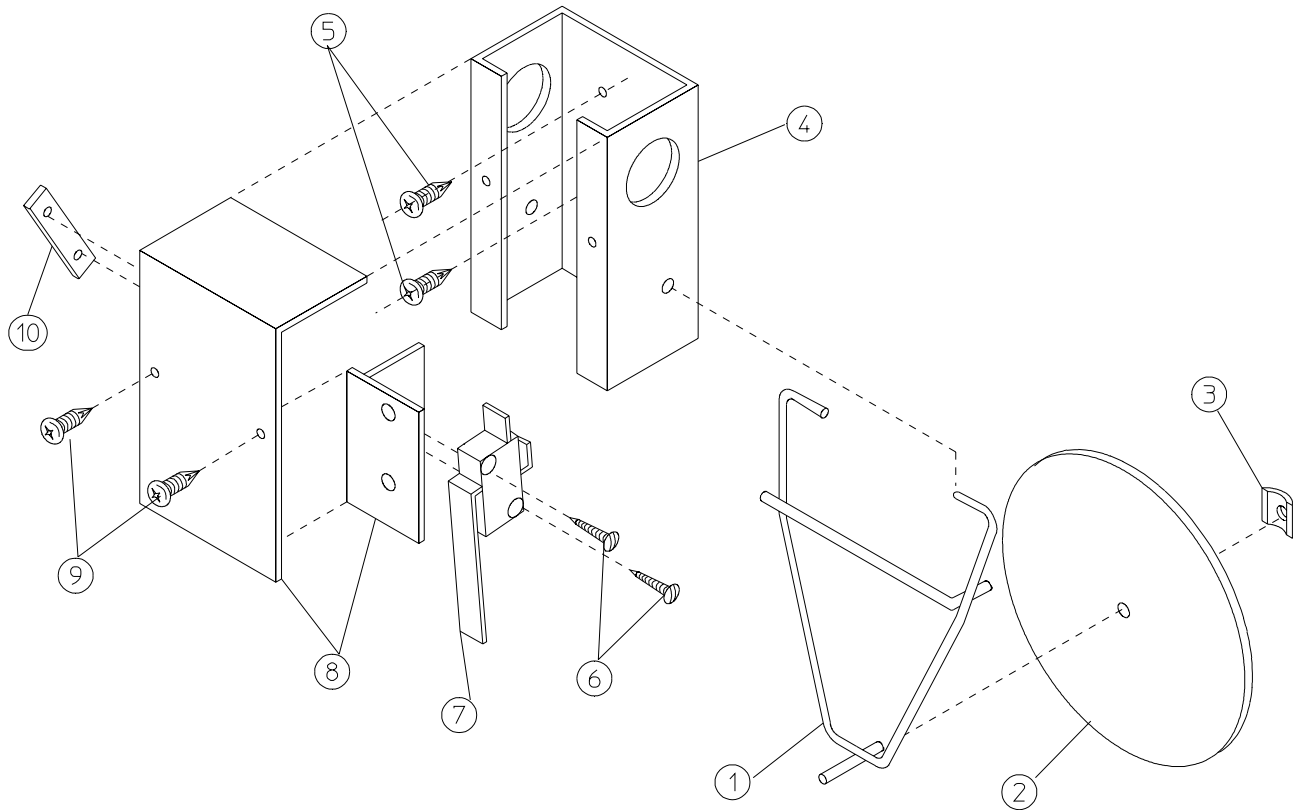
*** For L.P. gas models *ONLY*.

**** **ADC** Part No.130201 (330° Hi-Limit Small Man/Reset Thermostat) **can** and **should be** used in place of **ADC** Part No.132401 (330° Hi-Limit Thermostat).



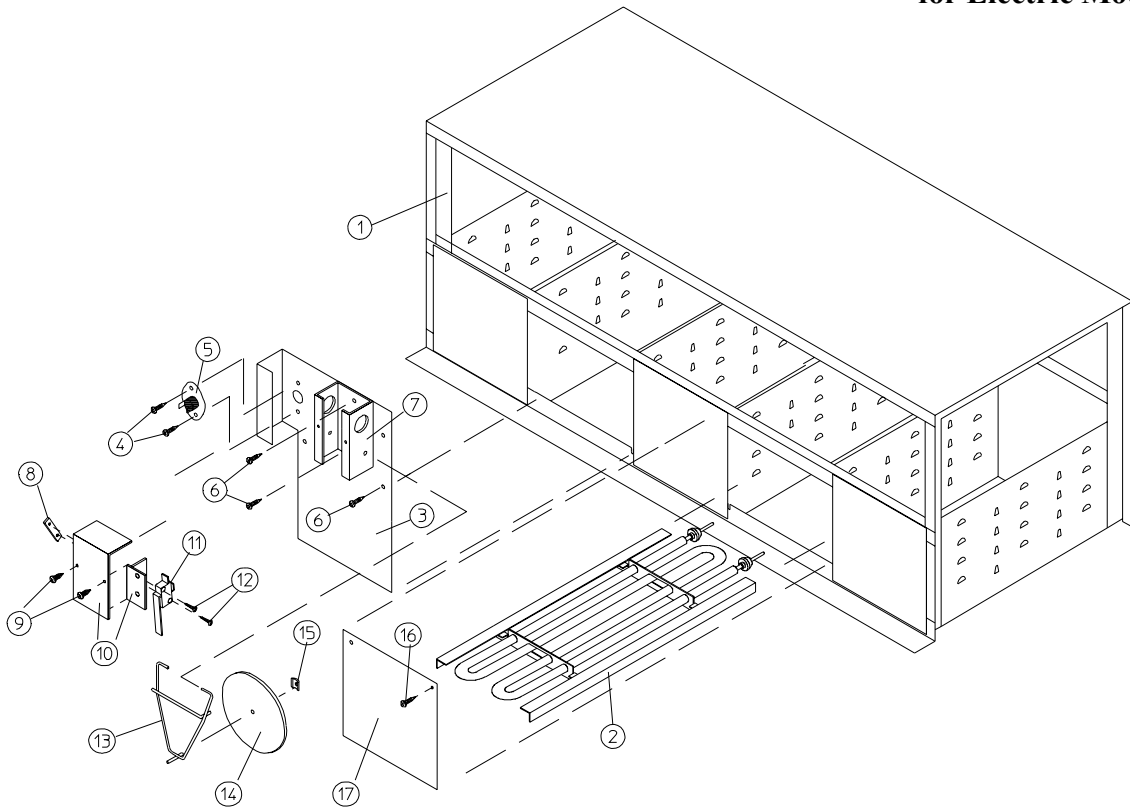
MAN3520

Illus. No.	Part No.	Qty.	Description
1	880815	1	ADC DSI Module ONLY - 50/60 HZ
2	820100	1	DSI Module Mount Assembly ONLY
3	121400	3	Universal Bushing
4	152014	3	1/3-20 Free Spin Wash Nut
5	150301	1	#8-18 x 7/16" Phillips Pan Head TEK Screw
6	153010	4	#6 Star Washer
7	152000	4	#6-32 Hex Nut

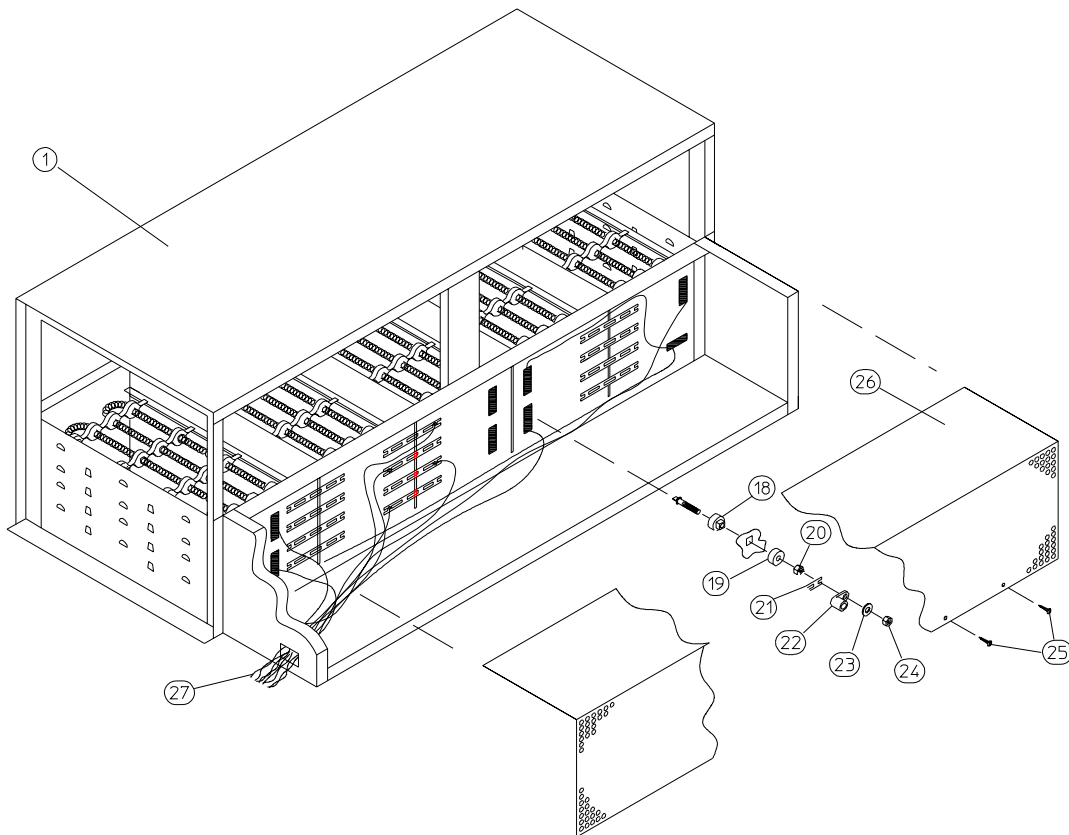


MAN0440

Illus. No.	Part No.	Qty.	Description
1	105500	1	Sail Switch Actuator Rod
2	319202	1	Sail Switch Damper (Flat)
3	154002	1	1/8" Push-on Fastener
4	802800	1	Sail Switch Box Cover and Bracket ONLY
	802801	1	Sail Switch Box Assembly Complete (includes illus. nos. 1 through 4 and 6 through 10)
5	150300	2	#10 x 1/2" Hex Washer TEK Screw
6	150303	2	#4 x 3/4" Pan Head "A" Machine Screw
7	122200	1	Sail Switch ONLY
8	802799	1	Sail Switch Box Cover and Bracket ONLY
9	150413	2	#10-16 x 1/2" Torx Crimpite Screw
10	154004	1	Twin Speed Nut



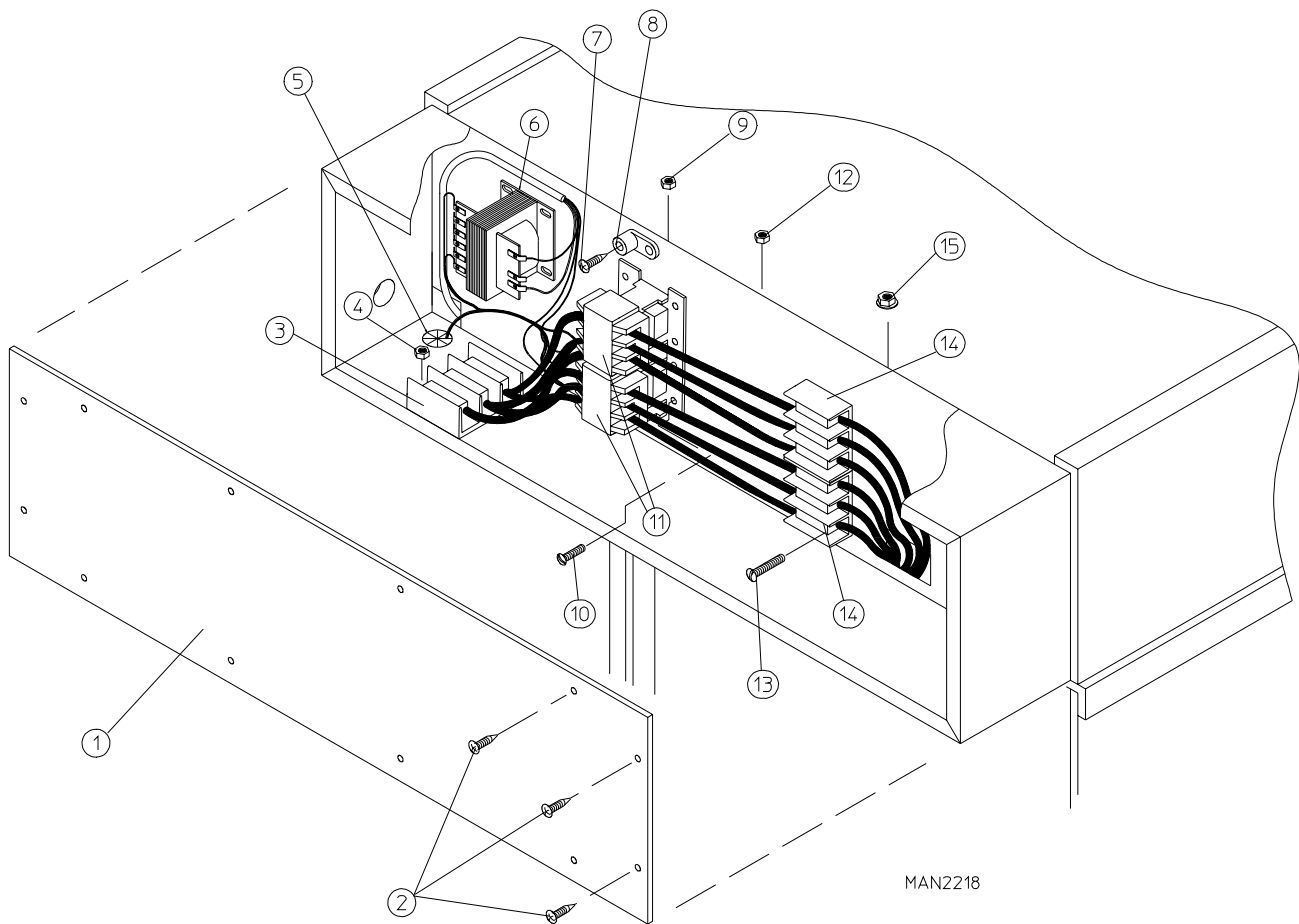
MAN1638



for Electric Models ONLY

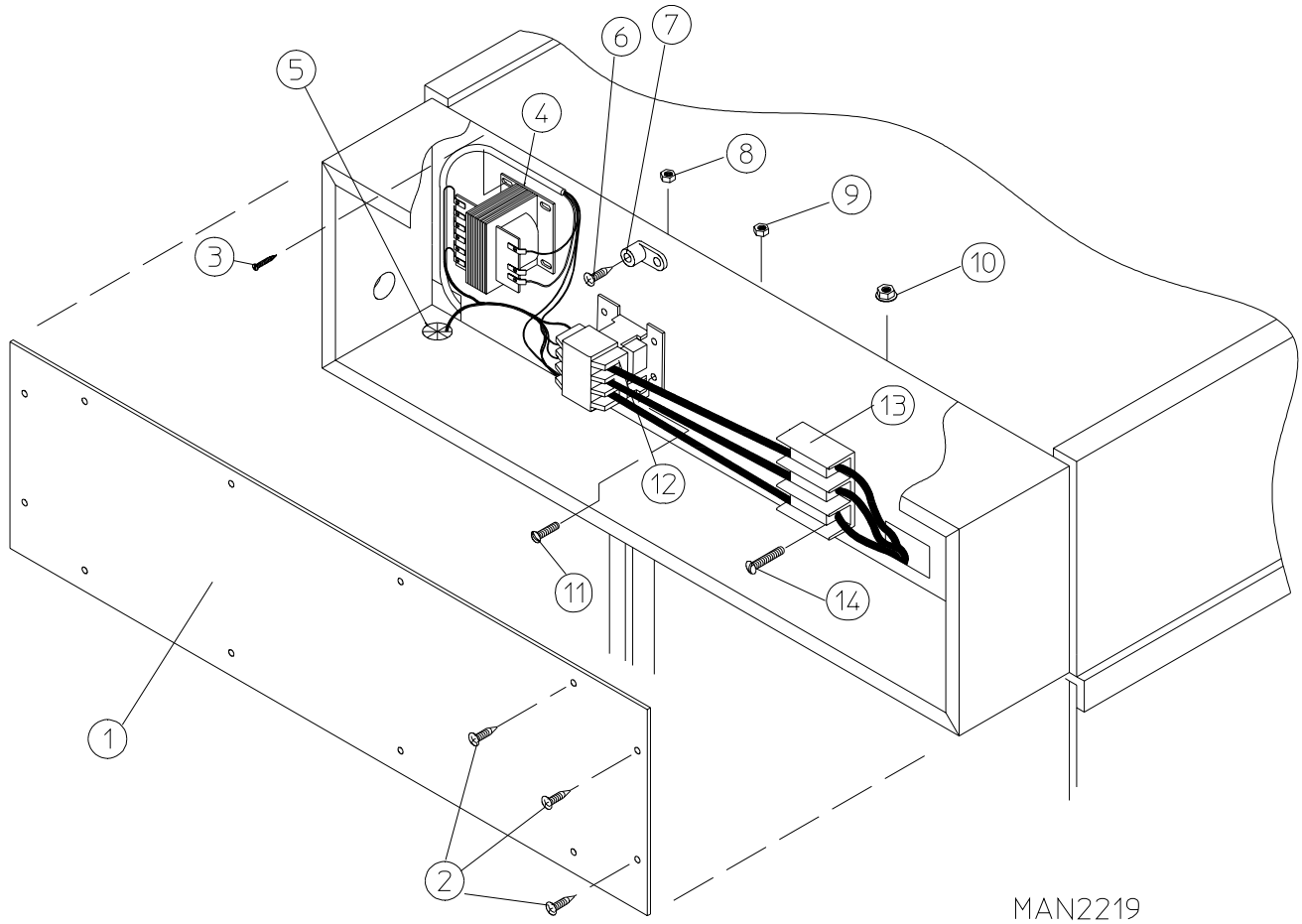
Illus. No.	Part No.	Qty.	Description
1	803015	1	Electric Oven Box ONLY (for models mfd. as of December 8, 1997)
	803002	1	Electric Oven Box ONLY (for models mfd. prior to December 8, 1997)
	-----*	1	Electric Oven Assembly Complete
2	-----*	18	Electric Element
3	802802	1	Safety Control Bracket ONLY
4	150301	2	#8-18 x 7/16" Phillips Pan Head TEK Screw
5	130400	1	290° Hi-Limit ONLY
6	150413	4	#10-16 x 1/2" Torx Crimptite Screw
7	802800	1	Sail Switch Box with Cover and Bracket ONLY
	802801	1	Sail Switch Box Assembly Complete (includes illus. nos. 7 through 15)
8	154004	1	Twin Speed Nut
9	150413	2	#10-16 x 1/2" Torx Crimptite Screw
10	802799	1	Sail Switch Box with Cover and Bracket ONLY
11	122200	1	Sail Switch ONLY
12	150303	2	#4 x 3/4" Pan Head "A" Machine Screw
13	105500	1	Sail Switch Actuator Rod
14	319202	1	Sail Switch Damper (flat)
15	154002	1	1/8" Push-On Fastener
16	150413	8	#10-16 x 1/2" Torx Crimptite Screw
17	803101	4	Element Cover ONLY
18	120081	36	Internal Ceramic Insulator
19	120080	36	External Ceramic Insulator
20	152008	36	#10-32 Hex Nut
21	121011*	---	Bus Bar (sold by the foot)
22	121010*	---	Terminal Lug
23	153009	36	#10 Star Washer
24	152008	36	#10-32 Hex Nut
25	150413	14	#10-16 x 1/2" Torx Crimptite Screw
26	320823	1	Electric Wire Burner Cover ONLY (for models mfd. as of December 8, 1997)
	321400	1	Electric Wire Burner Cover ONLY (for models mfd. prior to December 8, 1997)
27	-----*	-	Oven Wire (sold by the foot)

* Refer to **Electric Oven Component Application Charts** on page 48.



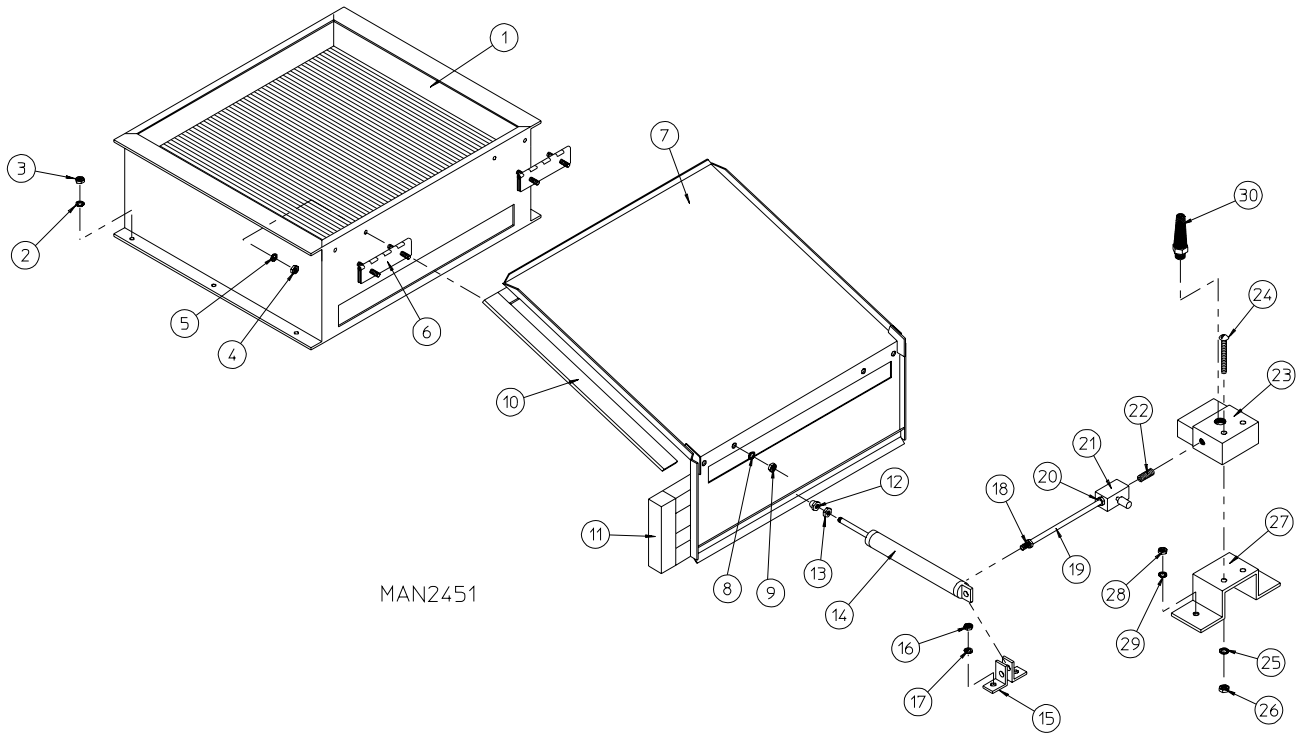
Illus. No.	Part No.	Qty.	Description
1	320902	1	ADE-120ES Electric Oven Relay Box Cover
2	150301	12	#8-18 x 7/16" Phillips Pan Head TEK Screw
3	120710	1	Power Distribution Block
4	151001	2	#8-32 Pal Nut
5	121400	2	Universal Bushing
6	132004	1	Transformer (for ALL Microprocessor [computer] Models and Timer Models)
7	150108	3	#8-32 x 1/2" Pan Head Machine Screw
8	121010	1	L-70 Terminal Lug
9	151001	1	#8-32 Pal Nut
10	150108	1	#8-32 x 1/2" Pan Head Machine Screw
11	131385	2	TSPT 112-Amp - 24 VAC Relay
12	151001	3	#8-32 Pal Nut
13	150521	2	1/4-20 x 2" Carriage Bolt
14	120706	1	Power Distribution Block
15	152014	2	1/4-20 Free Spin Wash Nut

380-416/480 VAC - 3Ø - 50/60 Hz



MAN2219

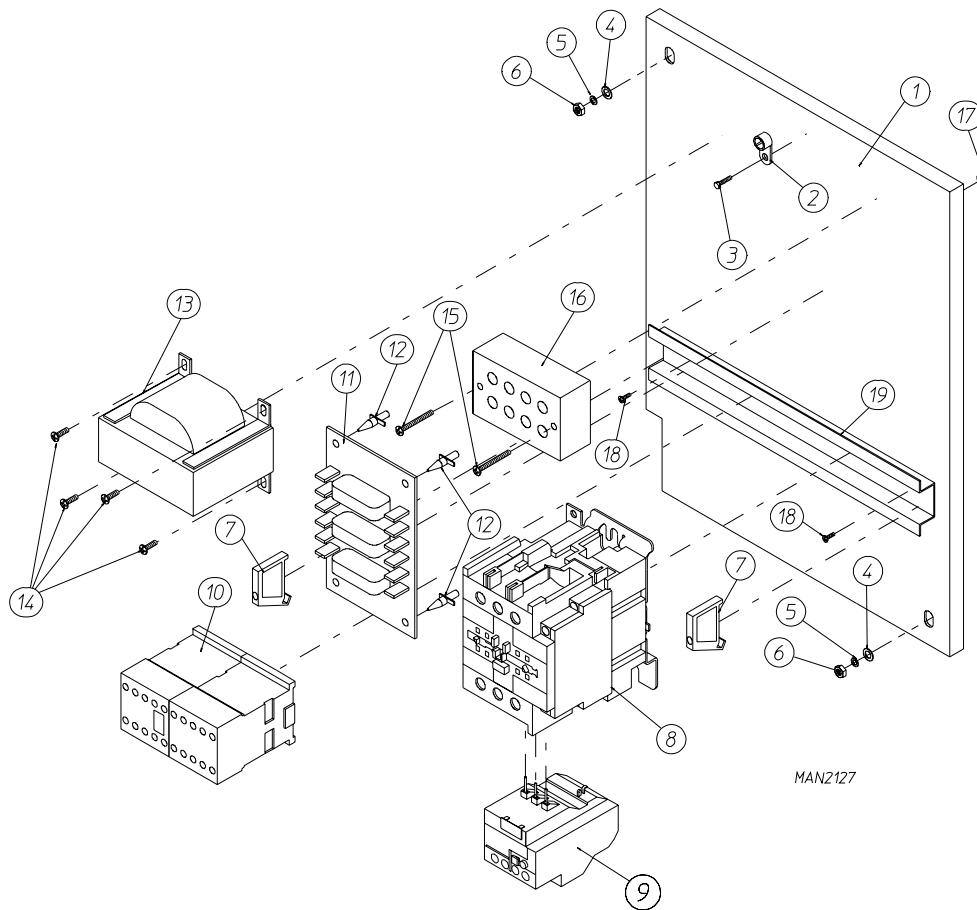
Illus. No.	Part No.	Qty.	Description
1	320902	1	ADE-120ES Electric Oven Relay Box Cover
2	150301	12	#8-18 x 7/16" Phillips Pan Head TEK Screw
3	150300	3	#10 x 1/2" Hex Washer TEK Screw
4	132004	1	Transformer (for ALL Electric Models - 380 VAC thru 480 VAC)
5	121400	2	Universal Bushing
6	150108	3	#8-32 x 1/2" Pan Head Machine Screw
7	121010	1	L-70 Terminal Lug
8	151001	1	#8-32 Pal Nut
9	151001	3	#8-32 Pal Nut
10	152014	2	1/4-20 Free Spin Wash Nut
11	150108	1	#8-32 x 1/2" Pan Head Machine Screw
12	131385	1	TSPT 112-Amp - 24 VAC Relay
13	120706	1	Power Distribution Block
14	150501	2	1/4-20 x 2" Carriage Bolt



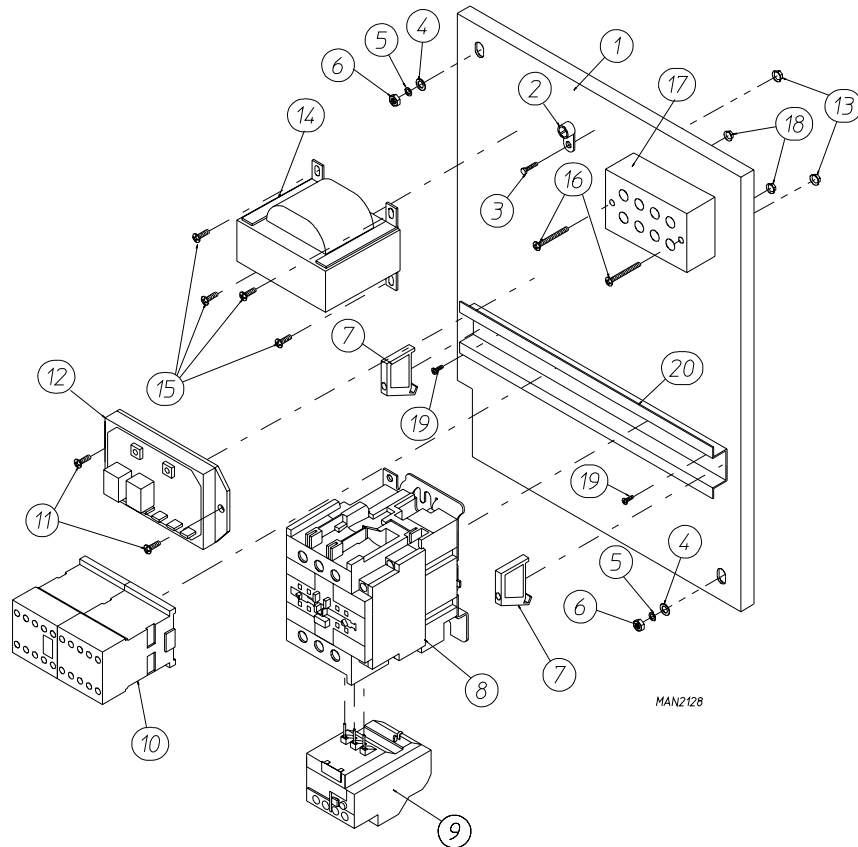
MAN2451

for Steam Models ONLY

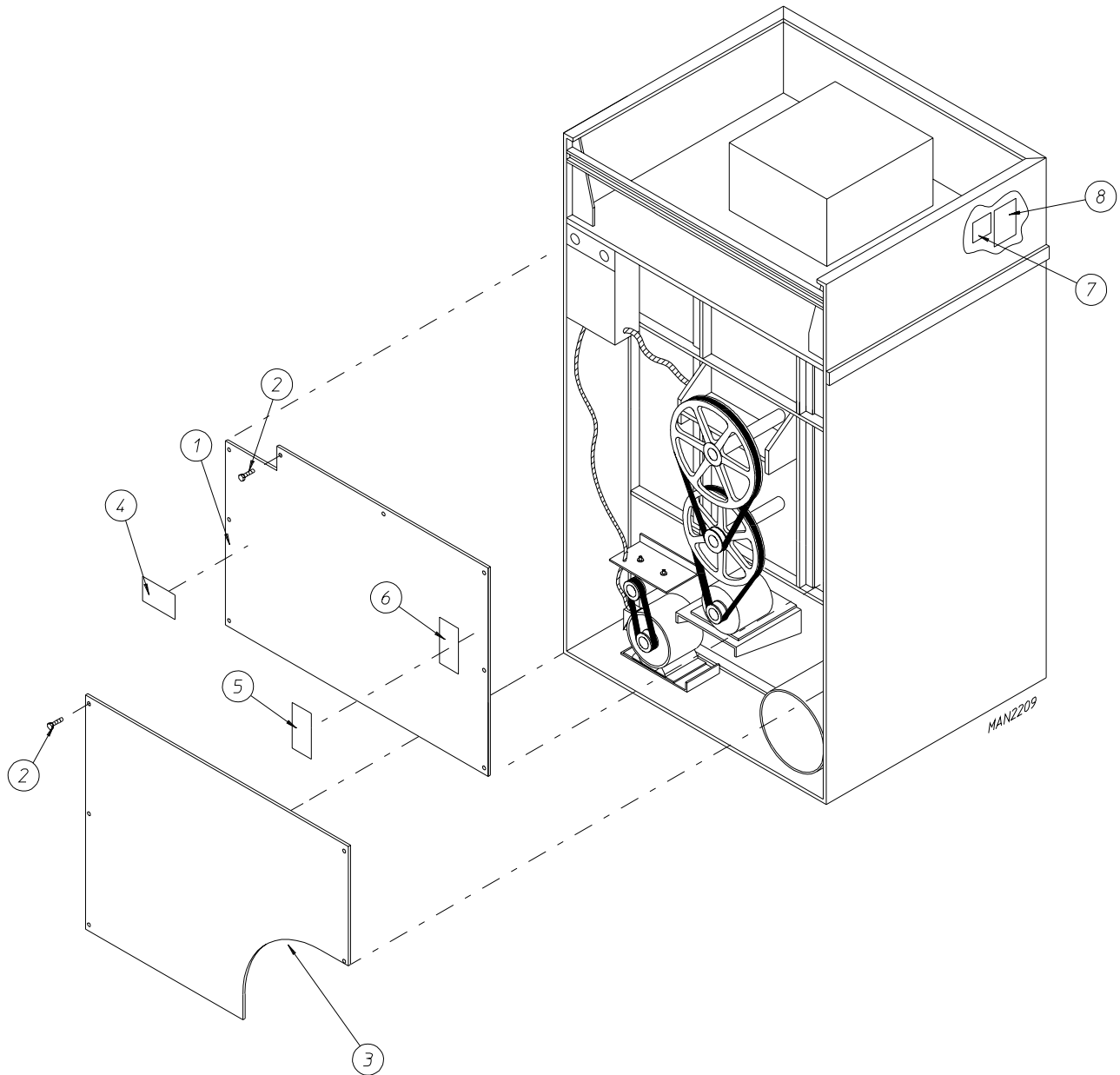
Illus. No.	Part No.	Qty.	Description
1	165012	1	Steam Coil Assembly
	165019	1	Steel Steam Coil Assembly (Optional)
2	153002	6	5/16" Lock Washer
3	152004	6	5/16-18 Hex Nut
4	152002	4	1/4-20 Hex Nut
5	153007	4	1/4" Lock Washer
6	820321	2	Steam Damper Hinge Assembly
7	820320	1	Steam Damper Assembly (includes illus. nos. 7, 10, and 11)
8	153007	4	1/4" Lock Washer
9	152002	4	1/4-20 Hex Nut
10	115995	84	Steam Damper Gasket (sold by the inch)
11	102350	1	Steam Damper Foam (68-1/2" length)
12	151007	1	7/16-20 Stainless Steel Acorn Nut
13	100499	1	1-1/2" Bore x 3" Stroke Piston
14	100500	1	Piston Support Bracket
15	152002	4	1/4-20 Hex Nut
16	153007	4	1/4" Lock Washer
17	100472	1	1/4" x 1/8" Connector
18	143110	1	1/4" Tubing (sold in feet)
19	100472	1	1/4" x 1/8" Connector
20	100496	1	1/8" Needle Valve
21	143238	1	1/8" Close Nipple
22	100498	1	3-Way Micro Valve - 24 VAC
23	150002	2	#6-32 x 1" Slotted Machine Screw
24	153010	2	#6 Star Washer
25	152000	2	#6-32 Hex Nut
26	330987	1	Micro Valve Support Bracket
27	152002	2	1/4-20 Hex Nut
28	153007	2	1/4" Lock Washer
29	100520	1	1/8" NPT Silencer (muffler)




Illus. No.	Part No.	Qty.	Description
1	332346	1	Contactor/Relay Mounting Panel ONLY
2	121010	1	L-70 Ground Lug
3	150108	1	#8-32 x 1/2" Pan Head Machine Screw
4	153001	2	5/16" Flat Washer
5	153002	2	5/16" Lock Washer
6	152004	2	5/16-18 Hex Nut
7	120765	2	End Stop /Bracket
8	132445	1	3 HP Impellor (Fan/Blower) Contactor
9	132467	1	208 Volt Blower Overload (for 208/230/240 Volt models Only)
	132468	1	380 Volt Blower Overload (for 380/460/480/575/600 Volt models Only)
10	132431	1	Reversing (Impellor/Blower/Fan) Contactor - 24 VAC
	132432	1	Contactor Replacement Coil - 24 VAC
11	137060	1	Arc Suppressor Board (3)
12	137013	4	Nylon Standoff
13	-----	1	Step Down Transformer (refer to Step Down Transformer Application Listing on page 47)
14	150300	4	#10 x 1/2" Hex Washer TEK Screw
15	150008	2	#6-32 x 1-1/4" Slotted Round Head Machine Screw
16	120701	1	4-Position Power Distribution Block
17	151000	2	#6-32 Pal Nut
18	150413	2	#10-16 x 1/2" Torx Crimpite Screw
19	120768	9	Din Mounting Rail (sold by the inch)



Illus. No.	Part No.	Qty.	Description
1	332346	1	ADE-120ES Contactor/Relay Mounting Panel ONLY
2	121010	1	L-70 Ground Lug
3	150108	1	#8-32 x 1/2" Phillips Pan Head Machine Screw
4	153001	2	5/16" Flat Washer
5	153002	2	5/16" Lock Washer
6	152004	2	5/16-18 Hex Nut
7	120765	2	End Stop /Bracket
8	132445	1	3 HP Impellor (Fan/Blower) Contactor
9	132467	1	208 Volt Blower Overload (for 208/230/240 Volt models Only)
	132468	1	380 Volt Blower Overload (for 380/460/480/575/600 Volt models Only)
10	132431	1	Reversing (Impellor/Fan/Blower) Contactor - 24 VAC
	132432	1	Contactor Replacement Coil - 24 VAC
11	150108	2	#8-32 x 1/2" Phillips Pan Head Machine Screw
12	132198	1	Reversing Timer ONLY (50/60 Hz) - 24 VAC
13	151001	2	#8-32 Pal Nut
14	-----	1	Step Down Transformer (refer to Step Down Transformer Application Listing on page 47)
15	150300	4	#10 x 1/2" Hex Washer TEK Screw
16	150008	2	#6-32 x 1-1/4" Slotted Round Head Machine Screw
17	120701	1	4-Position Power Distribution Block
18	151000	2	#6-32 Pal Nut
19	150413	2	#10-16 x 1/2" Torx CrimpTite Screw
20	120768	9	Din Mounting Rail (sold by the inch)



Illus. No.	Part No.	Qty.	Description
1	813029	1	Top Back Guard
2	150301	12	#8-18 x 7/16" Phillips Pan Head TEK Screw
3	354000	1	Gas and Electric Lower Back Guard
	354003	1	Steam Lower Back Guard
4	112017	1	ADC Name and Address Label
5	112229	1	Installation Instructions Label
6	112519	1	Routine Maintenance Label
7	-----	1	Dryer Data Label
8	112534	1	Phase 5 OPL Program Location Label (for Microprocessor Models Only)

STEP DOWN TRANSFORMER APPLICATION LISTING (Reversing Relay Box)				
HEAT	VOLTAGE	WIRE SERVICE	TRANSFORMER PART NUMBER	
			<i>MICROPROCESSOR MODELS</i>	<i>TIMER MODELS</i>
GAS  STEAM	380	3 or 4	132059	132059
	416	3 or 4	132062	132062
	440	3 or 4	132056	132056
	460 / 480	3 or 4	132053	132053
	575	3	132050	132050
ELECTRIC	380	3 or 4	132059	N/R
	416	3 or 4	132062	N/R
	460 / 480	3 or 4	132053	N/R
	575	3	N/A	N/A

N/A = Not available.

N/R = Not required.

for Electric Models ONLY

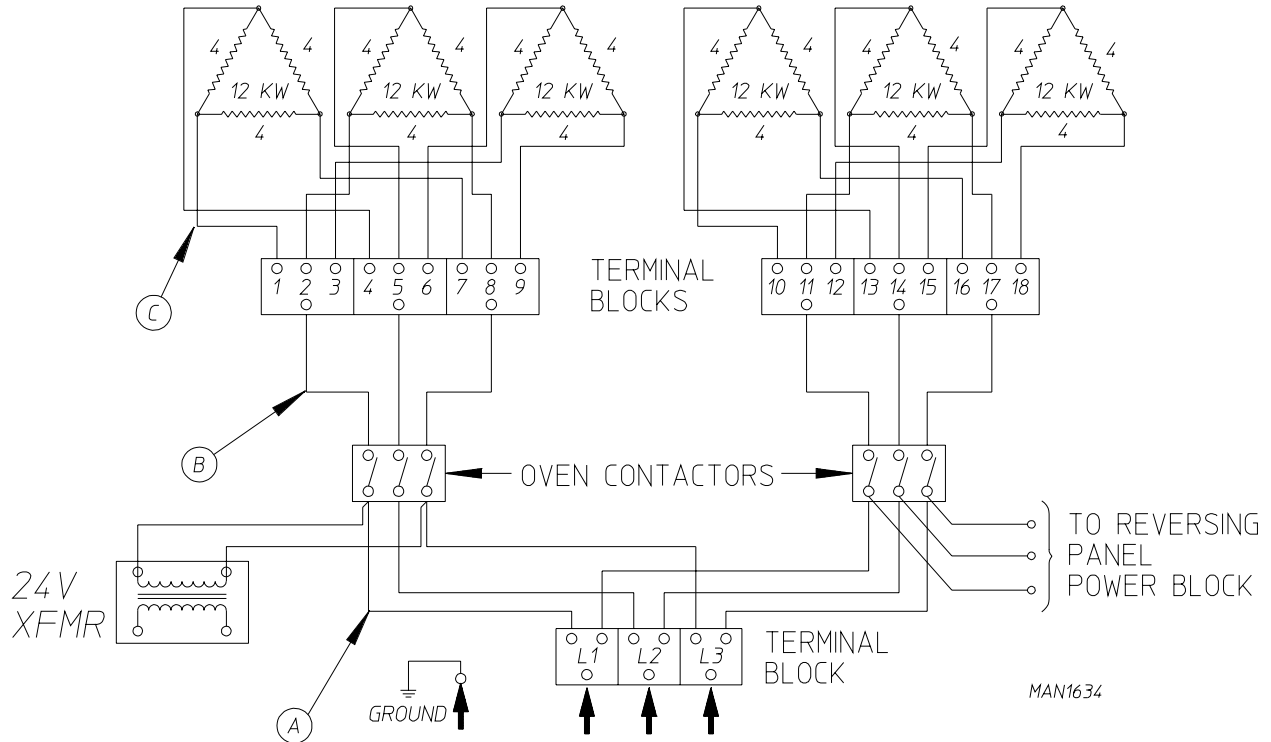
72 Kw Oven	VOLTS	208		230		380		416		480		
	PHASE	3ø		3ø		3ø		3ø		3ø		
	WIRE	3		3		3 or 4		3 or 4		3 or 4		
	OVEN ASSY. PART NO.	815816		815817		815820		815821		815822		
	ELEMENTS	QTY.	18		18		18		18		18	
		SIZE	4 Kw		4 Kw		4 Kw		4 Kw		4 Kw	
		PART NO.	120008		120009		120044		120008		120009	
	OVEN WIRE	QTY*	6'	25'	6'	25'	3'	8'	3'	25'	3'	25'
		SIZE	#2	#8	#2	#8	#2	#8	#2	#8	#2	#8
		PART NO.	133302	133100	133302	133100	133302	133100	133302	133100	133302	133100
	TERMINAL LUG	QTY.	13	6	13	6	9	1	9	1	9	1
		PART NO.	121010	121012	121010	121012	121010	121012	121010	121012	121010	121012
BUS BAR PART NO. 121011*	2'		2'		3'		3'		3'			

80 Kw Oven	VOLTS	208		230		380		416		480		
	PHASE	3ø		3ø		3ø		3ø		3ø		
	WIRE	3		3		3 or 4		3 or 4		3 or 4		
	OVEN ASSY. PART NO.	815823		815824		815810		815826		815827		
	ELEMENTS	QTY.	18		18		18		18		18	
		SIZE	4.5 Kw		4.5 Kw		4.5 Kw		4.5 Kw		4.5 Kw	
		PART NO.	120047		120048		120022		120047		120048	
	OVEN WIRE	QTY*	6'	25'	6'	25'	3'	25'	3'	25'	3'	25'
		SIZE	#2	#8	#2	#8	#1	#8	#1	#8	#2	#8
		PART NO.	133302	133100	133302	133100	133301	133100	133301	133100	133302	133100
	TERMINAL LUG	QTY.	18		18		10	1	18	1	18	1
		PART NO.	121010		121010		121010	121012	121010	121012	121010	121012
BUS BAR PART NO. 121011*	8'		8'		11'		11'		11'			

* Sold by the foot.

72 Kw - 208-240 VAC - 3ø - 50/60 Hz

ADE-120 (72KW) ELECTRIC OVEN POWER DISTRIBUTION
(72 Kw - 208-240 VAC - 3ø - 50/60 Hz)

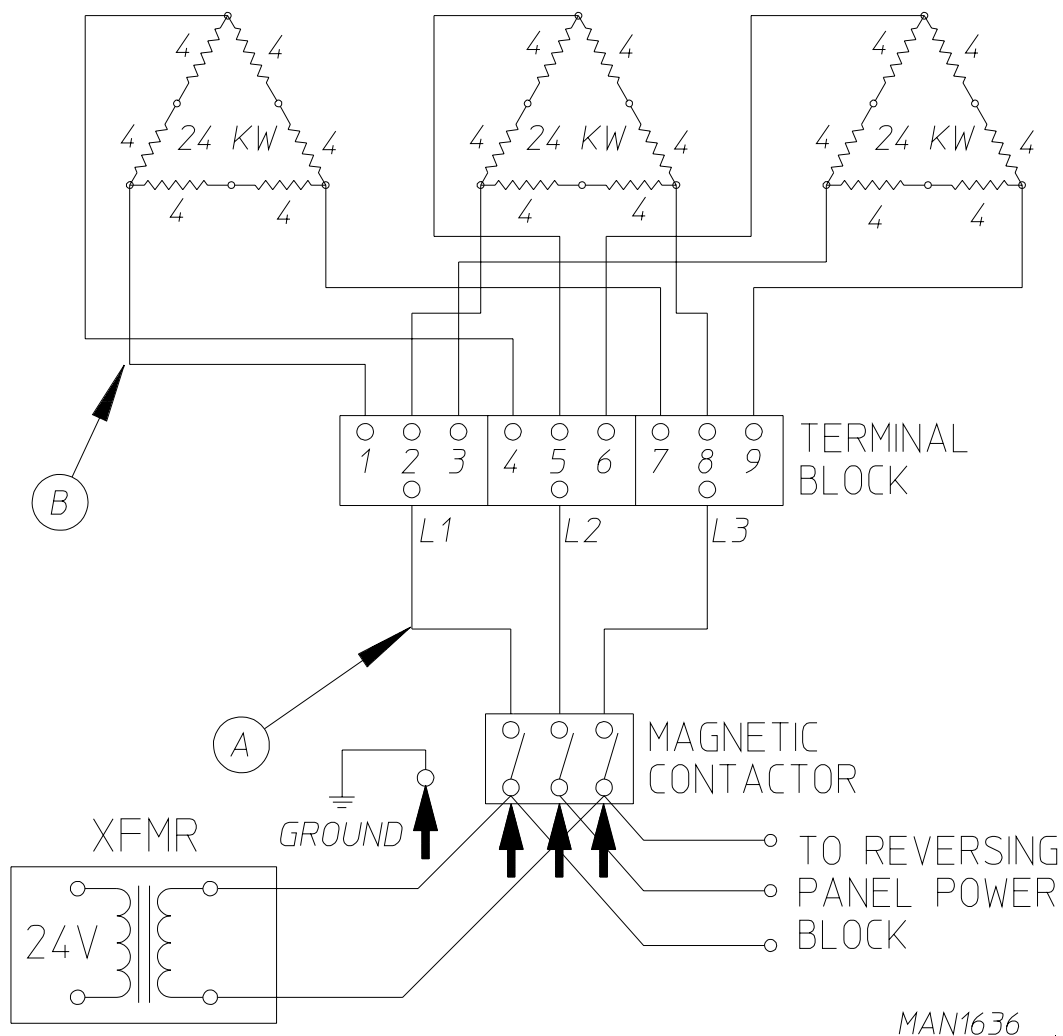


ELECTRIC SERVICE	QTY. ELEMENTS	ELEMENT PART NUMBER	OVEN AMPS	WIRE SIZE			CONTACTOR	24 VAC STEP DOWN TRANSFORMER
				A	B	C		
208v 3ø 3, 4w	18	120008	200	2	2	8	131385	132004
240v 3ø 3, 4w	18	120009	174	2	2	8	131385	132004

72 Kw - 380-416/480 VAC - 3ø - 50/60 Hz

ADE-120 (72KW) ELECTRIC OVEN POWER DISTRIBUTION

(72 Kw - 380-416/480 VAC - 3ø - 50/60 Hz)

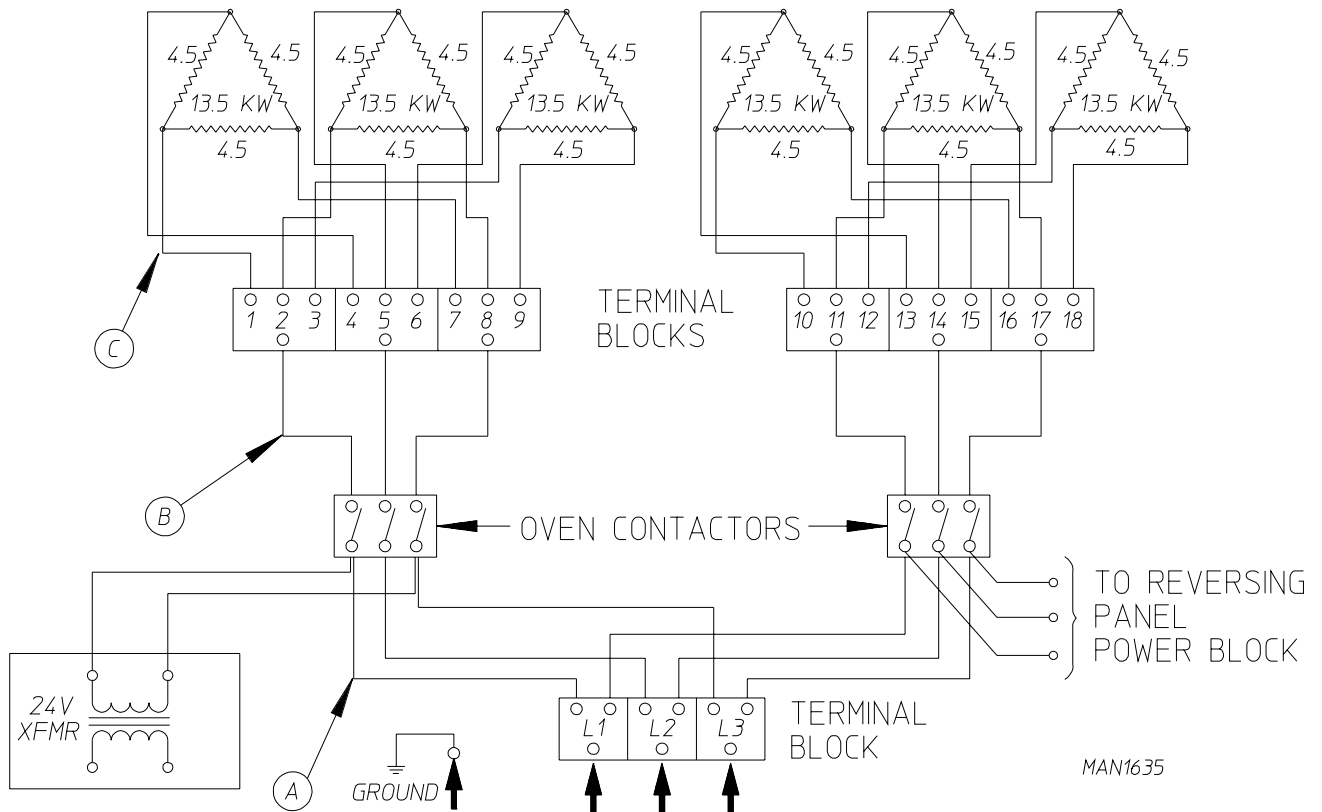


ELECTRIC SERVICE	QTY. ELEMENTS	ELEMENT PART NUMBER	OVEN AMPS	WIRE SIZE		CONTACTOR	24 VAC STEP DOWN TRANSFORMER
				A	B		
308v 3ø 3, 4w	18	1200044	110	2	8	131385	132004
416v 3ø 3, 4w	18	120008	100	2	8	131385	132004
480v 3ø 3, 4w	18	120009	87	2	8	131385	132004

80 Kw - 208-240 VAC - 3Ø - 50/60 Hz

ADE-120 (80KW) ELECTRIC OVEN POWER DISTRIBUTION

(80 Kw - 208-240 VAC - 3Ø - 50/60 Hz)

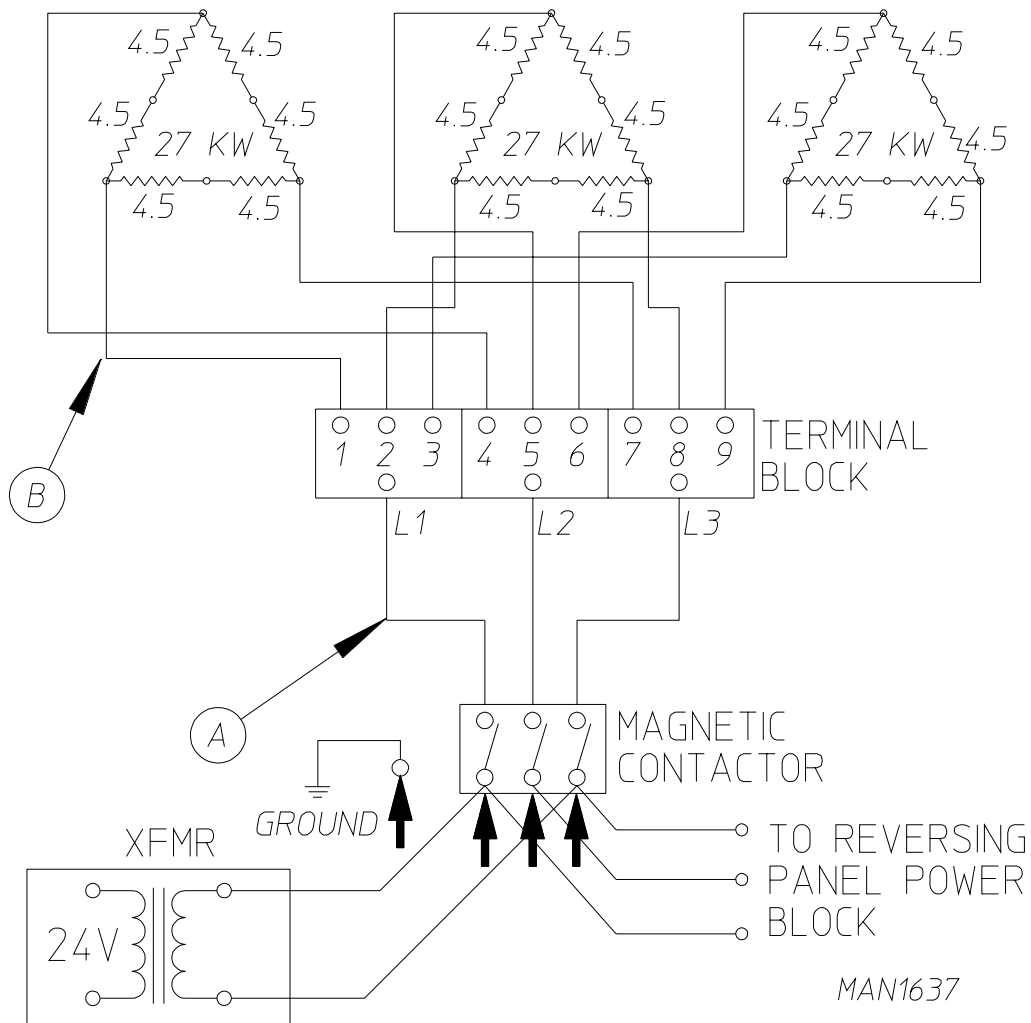


ELECTRIC SERVICE	QTY. ELEMENTS	ELEMENT PART NUMBER	OVEN AMPS	WIRE SIZE			CONTACTOR	24 VAC STEP DOWN TRANSFORMER
				A	B	C		
208v 3Ø 3, 4w	18	1200047	222	2	2	8	131385	132004
240v 3Ø 3, 4w	18	120048	193	2	2	8	131385	132004

80 Kw - 380-416/480 VAC - 3ø - 50/60 Hz

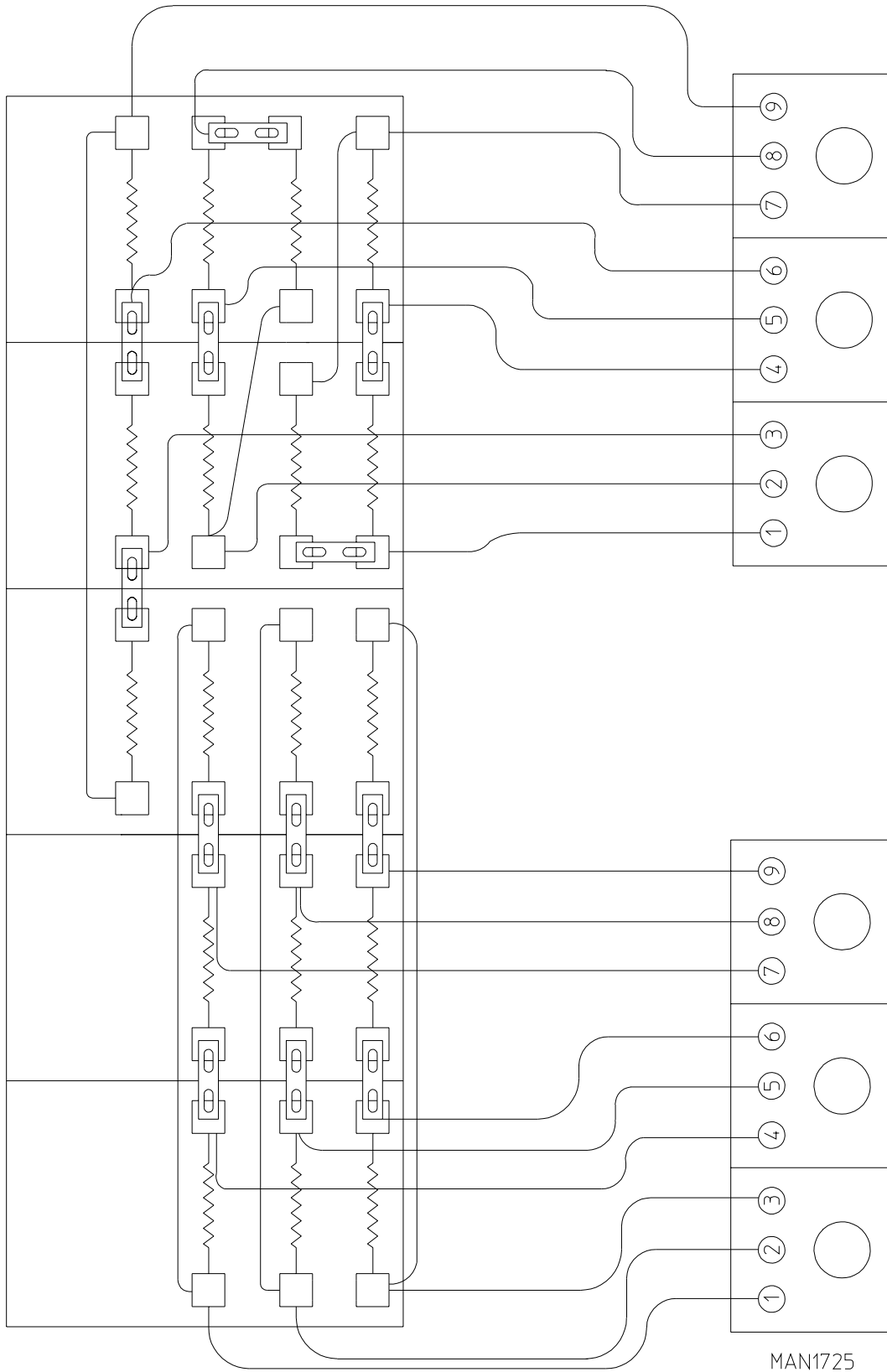
ADE-120 (80KW) ELECTRIC OVEN POWER DISTRIBUTION

(80 Kw - 380-416/480 VAC - 3ø - 50/60 Hz)

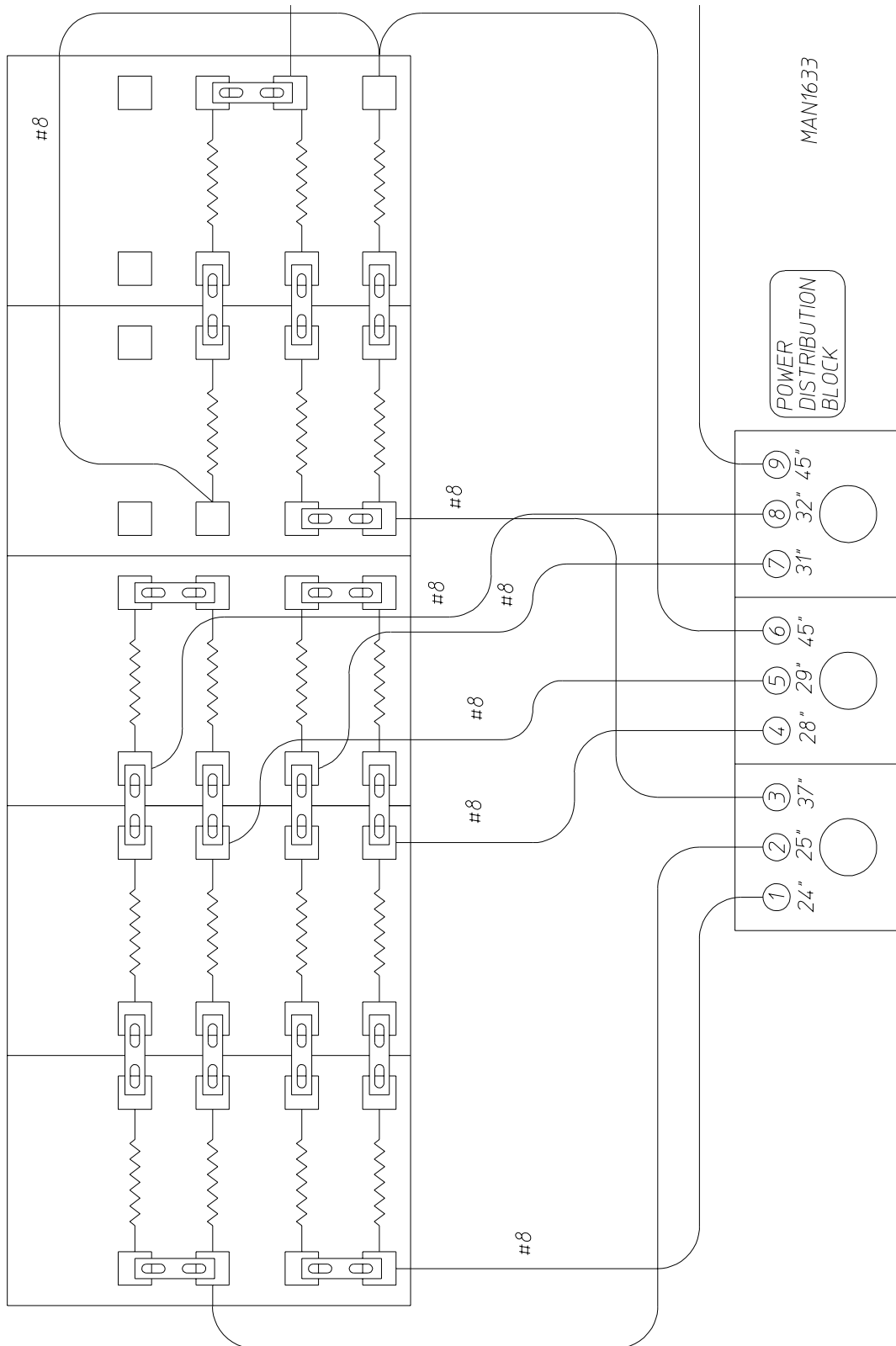


Electric Service	Qty. Elements	Element Part Number	Oven Amps	Wire Size		Contactor	24 VAC Step Down Transformer
				A	B		
308v 3ø 3, 4w	18	120022	122	1	8	131385	132004
416v 3ø 3, 4w	18	120047	111	1	8	131385	132004
480v 3ø 3, 4w	18	120048	96.3	2	8	131385	132004

72/80 Kw - 208-240 VAC - 3 ϕ - 50/60 Hz



72/80 Kw - 380-416/480 VAC - 3 ϕ - 50/60 Hz



Part No.	Description
112280	"Clean Lint Screen" Label
114001	"CAUTION-Exhausted/Lint Screen" Label
114006	"WARNING - Fire Hazards" Label
120100	3/8" Straight (BX) Connector
120300	3/8" x 45° (BX) Connector
120400	3/8" Red Jacket (BX) Insulator
120500	3/8" Jiffy Clip (BX Retainer Clip)
120600	3/8" Greenfield (BX)
120800	1/4" In-Line Connector
120802	Red Butt Connector
120902	#74B Wire Nut
120903	Crimp-on Wire Nut
121014	1/4" Insulated (female) Terminal
121026	Tab Receptacle Combination
121499	4" Harness Tie
121500	7" Harness Tie
122503	Harness Tie Mounting Clip
122804	Manometer (water column test gauge)
121507	Snap Wire Tie Screw Mount
880200	Electrical Terminal (assortment) Kit

ADC 450160 1- 12/02/95-100 2- 08/22/96-100 3* 04/24/97-100
4- 08/05/98-50 5* 04/27/99-50

