



AD-15 /AD-25 PartsManual
24 VAC Phase 5
1992 thru 1997

American Dryer Corporation
88 Currant Road
Fall River, MA 02720-4781
Telephone: (508) 678-9010 / Fax: (508) 678-9447
E-mail: service@amdry.com

Retain This Manual In A Safe Place For Future Reference

American Dryer Corporation products embody advanced concepts in engineering, design, and safety. If this product is properly maintained, it will provide many years of safe, efficient, and trouble-free operation.

ONLY properly licensed technicians should service this equipment.

OBSERVE ALL SAFETY PRECAUTIONS displayed on the equipment or specified in the installation/operator's manual included with the dryer.

WARNING: UNDER NO CIRCUMSTANCES should the door switch or the heat circuit devices ever be disabled.

WARNING: The dryer must never be operated with any of the back guards, outer tops, or service panels removed. **PERSONAL INJURY or FIRE COULD RESULT.**

We have tried to make this manual as complete as possible and hope you will find it useful. ADC reserves the right to make changes from time to time, without notice or obligation, in prices, specifications, colors, and material, and to change or discontinue models.

Important

For your convenience, log the following information:

DATE OF PURCHASE _____ **MODEL NO.** _____

DISTRIBUTORS NAME _____

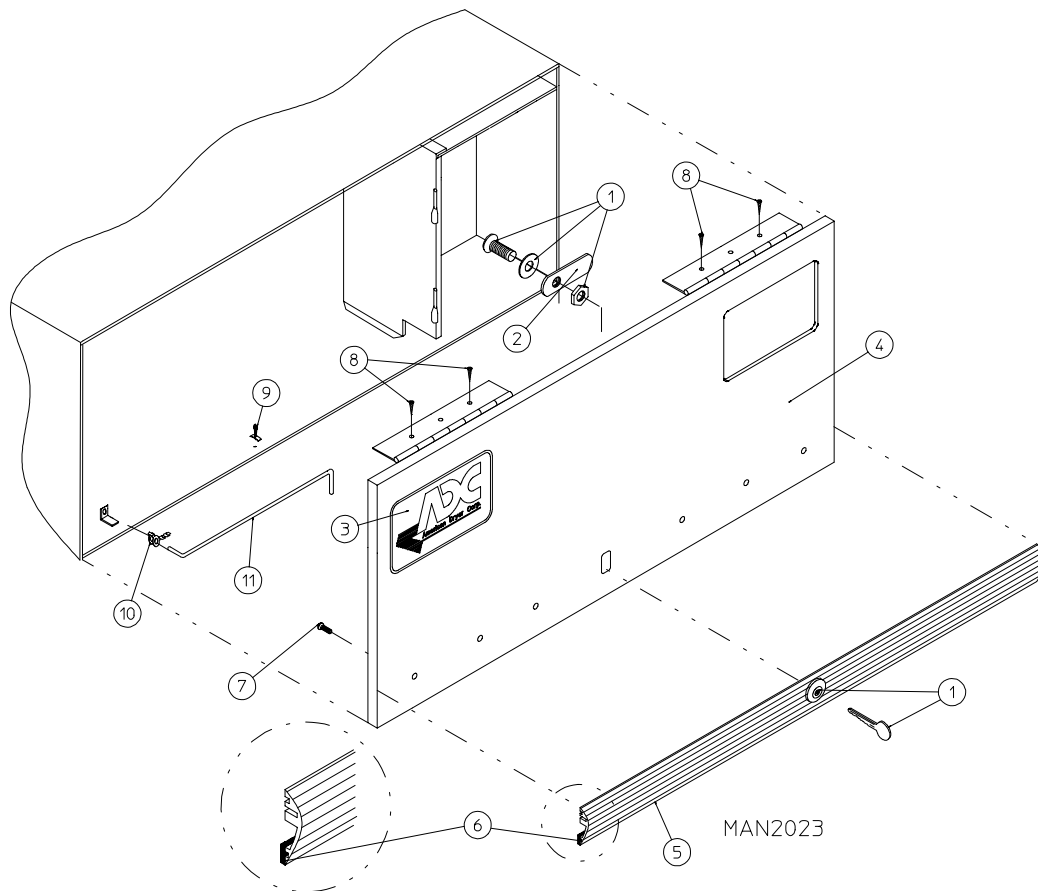
Serial Number(s) _____

Replacement parts can be obtained from your distributor or the ADC factory. When ordering replacement parts from the factory, you can FAX your order to ADC at (508) 678-9447 or telephone your orders directly to the ADC Parts Department at (508) 678-9010. Please specify the dryer model number and serial number in addition to the description and part number, so that your order is processed accurately and promptly. The illustrations on the following pages may not depict your particular dryer exactly. The illustrations are a composite of the various dryer models. Be sure to check the descriptions of the parts thoroughly before ordering.

INSTRUCTIONS TO BE FOLLOWED IN THE EVENT THE USER SMELLS GAS MUST BE POSTED IN A PROMINENT LOCATION. THE INSTRUCTIONS TO BE POSTED SHALL BE OBTAINED FROM THE LOCAL GAS SUPPLIER.

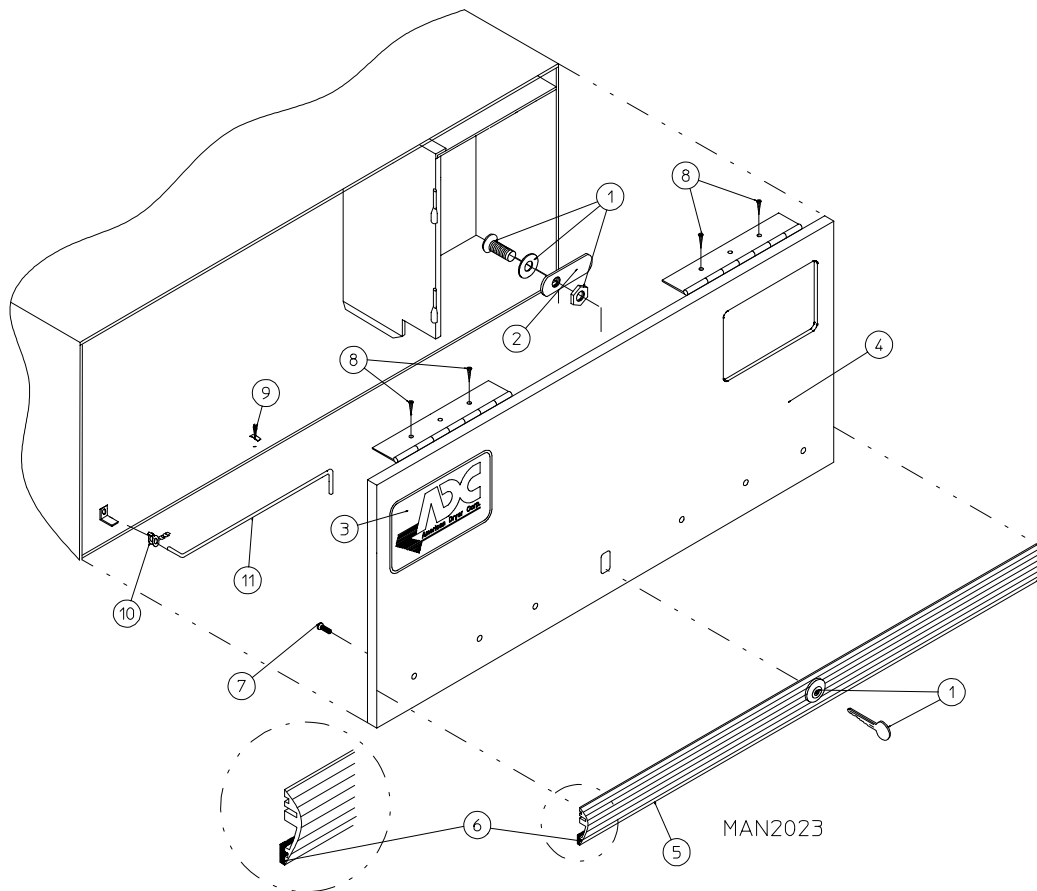
Table of Contents

AD-15 High Security Control Door Assembly	2
AD-25 High Security Control Door Assembly	3
Phase 5 OPL Microprocessor Control Panel Assembly	4
Phase 5 OPL Microprocessor Control Panel Assembly	5
Phase 5 Coin and OPL Microprocessor Control Box Assembly	6
AD-15/AD-25 Control Vault Assembly	7
Dual Timer Control Panel Assembly	8
Dual Timer Control Box Assembly	9
Non-Microprocessor Coin Meter Control Panel Assembly	10
Non-Microprocessor Coin Meter Control Box Assembly	11
Slide Meter Case Assembly for models mfd. as of January 13, 1995	12
Slide Meter Case Assembly for models mfd. prior to January 13, 1995	13
Main Door Assembly	14
Main Door Switch Assembly	15
AD-15 Front Panel Assembly	16
AD-25 Front Panel Assembly	17
AD-15 Basket (Tumbler) / Support Assembly	18
AD-25 Basket (Tumbler) / Support Assembly	19
AD-15 Drop Lint Door Assembly	20
AD-25 Drop Lint Door Assembly	21
AD-15/AD-25 Lint Trap Assembly	22
AD-15/AD-25 Tumbler Bearing Assembly	23
AD-15/AD-25 Idler Bearing Assembly	24, 25
AD-15 Totally Enclosed, Fan-Cooled (T.E.F.C.) Motor Mount Assembly	26, 27
AD-25 Totally Enclosed, Fan-Cooled (T.E.F.C.) Motor Mount Assembly	28, 29
Sensor Bracket Assemblies	30, 31
ADG-15/ADG-25 Direct Spark Ignition (DSI) Burner Assembly	32, 33
ADE-15/ADE-25 Electric Oven Assembly	34, 35
ADG-15/ADG-25 Sail Switch / Hi-Limit Assemblies	36, 37
Single Phase Motor, Electric Relay Panel Assembly	38
3-Phase Motor, Electric Relay Panel Assembly	39
Microprocessor Reversing Rear Control Box Assembly	40
Dual Timer Reversing Rear Control Box Assembly	41
Slide Meter Control Box Assembly for models mfd. as of January 13, 1995	42
Slide Meter Control Box Assembly for models mfd. prior to January 13, 1995	43
ADS-15 Steam Coil / Air Operated Steam Damper Assembly	44, 45
ADS-15 Steam Coil / Mechanical Steam Damper Assembly	46, 47
ADS-25 Steam Coil / Air Operated Steam Damper Assembly	48, 49
ADS-25 Steam Coil / Mechanical Steam Damper Assembly	50, 51
AD-15/AD-25 Outer Top/Back Guard Assembly	52
ADG-15/ADG-25 Heat Reclaimer Assembly	53
Microprocessor Coin Acceptors Listing	54
Coin Meter Replacement Parts	55
AD-15/AD-25 Step Down Transformer Usage Listing for Gas/Steam Dryers	56
ADE-15/ADE-25 Step Down Transformer Usage Listing for Electric Dryers	57
ADE-15/ADE-25 Electric Oven Component Application Charts	58
ADG-15/ADG-25 DSI Burner Assembly Specifications	59
Additional Parts Available	60



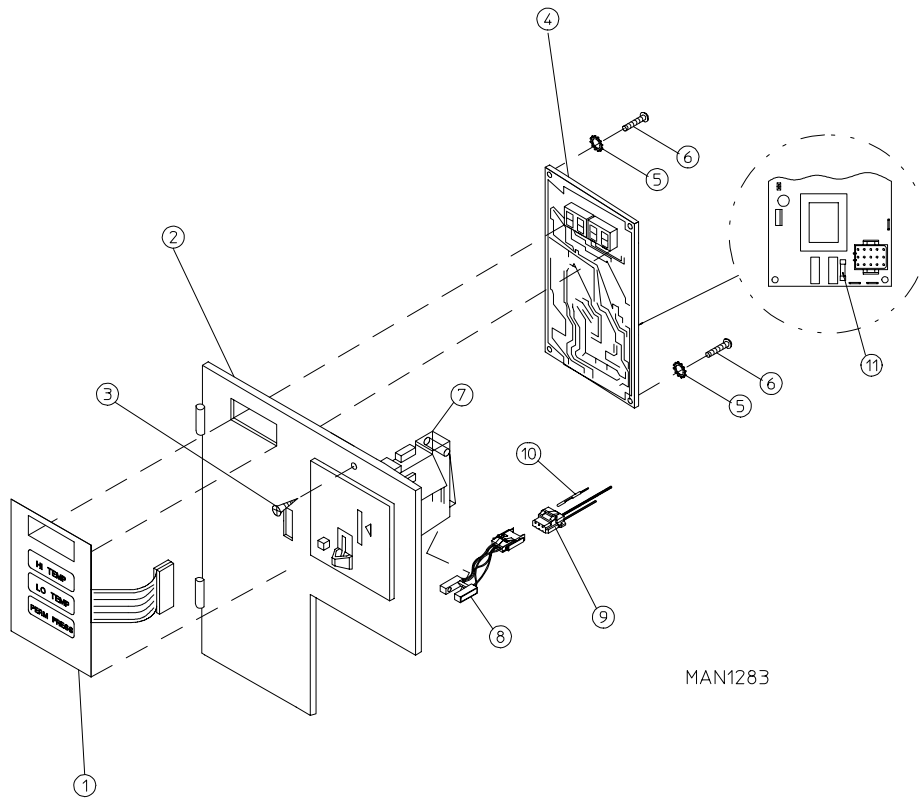
<u>Illus. No.</u>	<u>Part No.</u>	<u>Qty.</u>	<u>Description</u>
1	160015	1	High Security MK-100 Lock Assembly with Key (for Coin Models ONLY)
	160104	1	MK-100 Key ONLY
	160017	1	Special Dummy Lock ONLY (for Non-Coin Models ONLY)
2	160016	1	Lock Cam ONLY
3	881053	1	ADC Logo with Tape
	870011	1	Double Sided Tape Kit
4	800023*	1	AD-15 High Security Control Door Assembly (includes illus. nos. 4 through 7)
	800140	1	AD-15 High Security Stainless Steel Control Door Assembly Less Lock (includes illus. nos. 4 through 7)
5	180200	1	AD-15 Top Gray Trim Strip with Lock Hole
6	117603	3	Suppressor Tape/Gasket (sold in feet) For models mfd. as of February 6, 1995
	102307	3	Trim Bumper Gasket (sold in feet) For models mfd. prior to February 6, 1995
7	150201	5	#10-32 x 1/4" Phillips Round Head Machine Screw
8	150300	4	#10 x 1/2" Hex Washer TEK Screw
9	102600	1	Control Door Rod Support Catch
10	102601	1	Control Door Rod Retainer Clip
11	102502	1	Control Door Support Rod

* Specify color when ordering.



<u>Illus. No.</u>	<u>Part No.</u>	<u>Qty.</u>	<u>Description</u>
1	160015	1	High Security MK-100 Lock Assembly with Key (for Coin Models ONLY)
	160104	1	MK-100 Key ONLY
	160017	1	Special Dummy Lock ONLY (for Non-Coin Models ONLY)
2	160016	1	Lock Cam ONLY
3	881053	1	ADC Logo with Tape
	870011	1	Double Sided Tape Kit
4	800022*	1	AD-25 High Security Control Door Assembly (includes illus. nos. 4 through 7)
	800140	1	AD-25 High Security Stainless Steel Control Door Assembly Less Lock (includes illus. nos. 4 through 7)
5	180200	1	AD-25 Top Gray Trim Strip with Lock Hole
6	117603	3	Suppressor Tape/Gasket (sold in feet) For models mfd. as of February 6, 1995
	102307	3	Trim Bumper Gasket (sold in feet) For models mfd. prior to February 6, 1995
7	150201	5	#10-32 x 1/4" Phillips Round Head Machine Screw
8	150300	4	#10 x 1/2" Hex Washer TEK Screw
9	102600	1	Control Door Rod Support Catch
10	102601	1	Control Door Rod Retainer Clip
11	102502	1	Control Door Support Rod

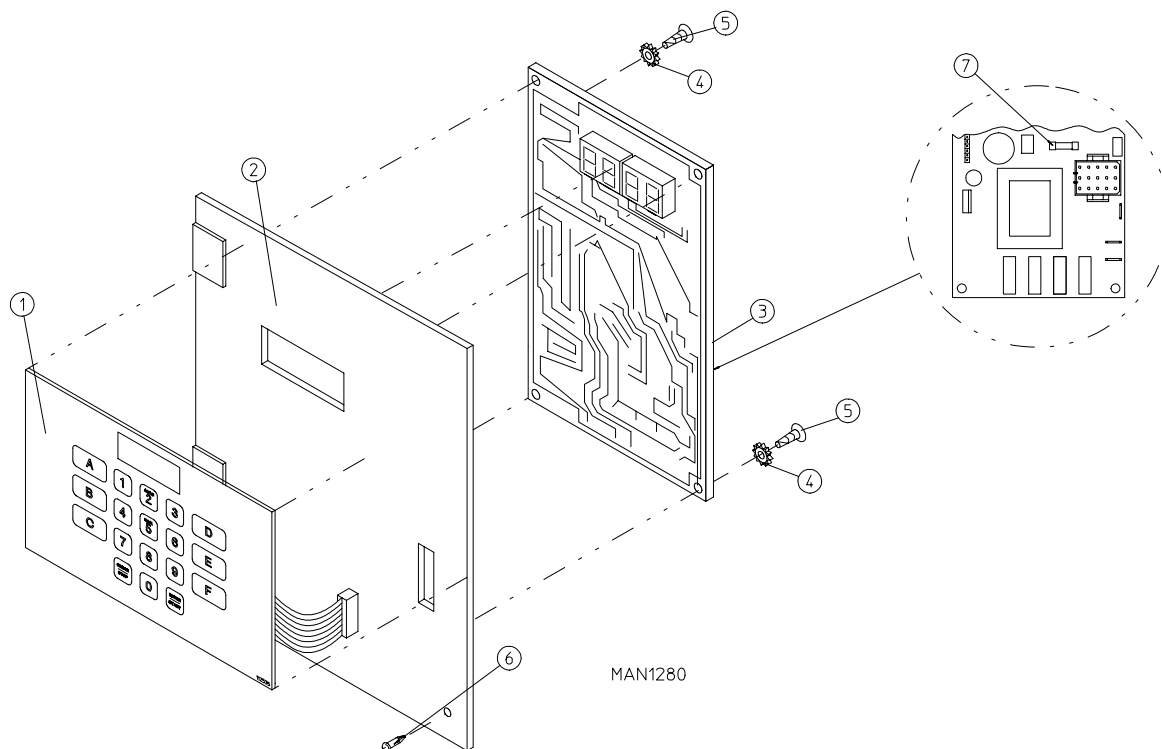
* Specify color when ordering.



<u>Illus. No.</u>	<u>Part No.</u>	<u>Qty.</u>	<u>Description</u>
1	112526	1	Coin Keyboard Label Assembly
2	801213	1	Phase 5 Coin Control Panel Assembly (includes illus. nos. 1, 2, 4, 5, 6, and 11)
	801229	1	Phase 5 Coin Control Panel Assembly ONLY with Battery Option (includes illus. nos. 1, 2, 4, 5, 6, and 11)
	801259	1	Coin Control Panel ONLY
	801258	1	Coin Control Panel with Battery Bracket
3	150415	1	#10-16 x 1/2" Phillips Round Head Crimptite Screw
4	137213	1	Phase 5 Coin Controller ONLY
	824998	1	Phase 5 Battery Clip
5	153010	2	#6 Star Washer
6	150005	2	#6-32 x 1/4" Phillips Round Head Machine Screw
7	-----	1	Microprocessor Coin Acceptor with Optical Switch (refer to Microprocessor Coin Acceptor Listing on page 54)
8	137056	1*	Optic Switch ONLY
9	137023	1*	Optic Switch Connector ONLY
10	137021	3*	Microprocessor Socket ONLY
	880772	1	Single Coin Optical Switch Harness
	824080	1	Dual Coin Optical Switch Harness
	122800	1	Microprocessor (female) Pin Extraction Tool
11	136048	1	1/8-Amp (Slo Blo) Fuse ONLY

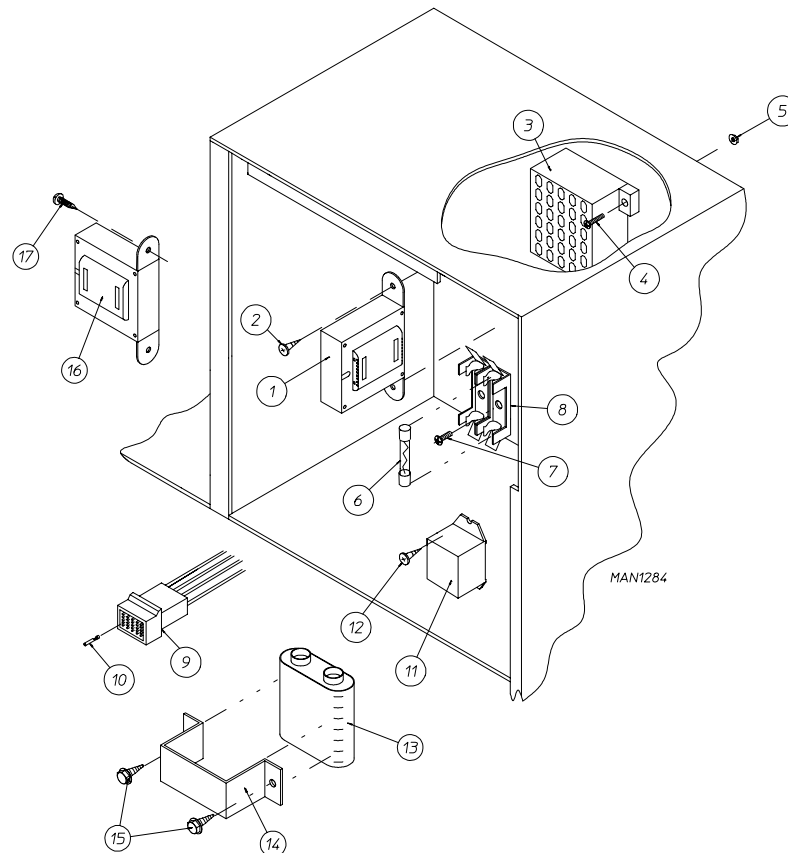
* For Dual Coin Models, double the quantity.

IMPORTANT: Check label on computer chip to verify correct part number for controller.



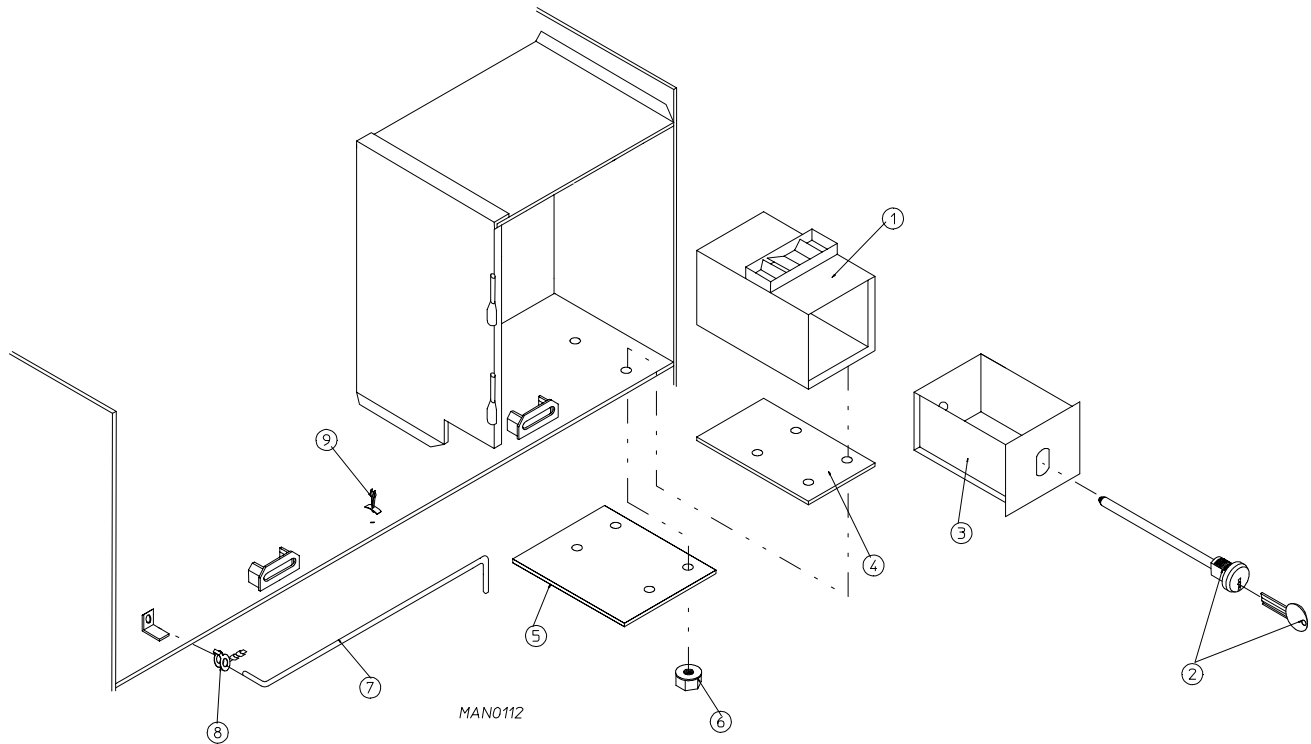
<u>Illus. No.</u>	<u>Part No.</u>	<u>Qty.</u>	<u>Description</u>
1	112535	1	OPL English Keyboard Label Assembly
	112276	1	OPL Stick-on Labels (English ONLY) ... Not Illustrated
	112275	1	OPL Stick-on Labels ... Not Illustrated (Spanish, Italian, and Hebrew)
	112277	1	3-Language OPL Stick-on Labels ... Not Illustrated (English, Spanish, and Hebrew)
	112278	1	5-Language OPL Stick-on Labels ... Not Illustrated (Italian, Dutch, French, German, and Chinese)
2	801255	1	Phase 5 Microprocessor Control Panel ONLY
	801256	1	Phase 5 Microprocessor Control Panel ONLY with Battery Bracket
	801206	1	Phase 5 OPL Non-Reversing Microprocessor Control Panel Assembly Complete (includes illus. nos. 1 through 6)
	801207	1	Phase 5 OPL Reversing Microprocessor Control Panel Assembly Complete (includes illus. nos. 1 through 6)
3	137222	1	Phase 5 OPL Non-Reversing Controller ONLY
	137231	1	Phase 5 OPL Reversing Controller ONLY
	824998	1	Phase 5 Battery Clip
4	153010	2	#6 Star Washer
5	150005	2	#6-32 x 1/4" Phillips Round Head Machine Screw
6	150415	1	#10-16 x 1/2" Phillips Round Head CrimpTite Screw (for models mfd. as of March 1, 1994)
	160005	1	Spring Turn Latch (2-piece) ... Not Illustrated (for models mfd. prior to March 1, 1994)
7	136048	1	1/8-Amp (Slo Blo) Fuse

IMPORTANT: Check label on computer chip to verify correct part number for controller.



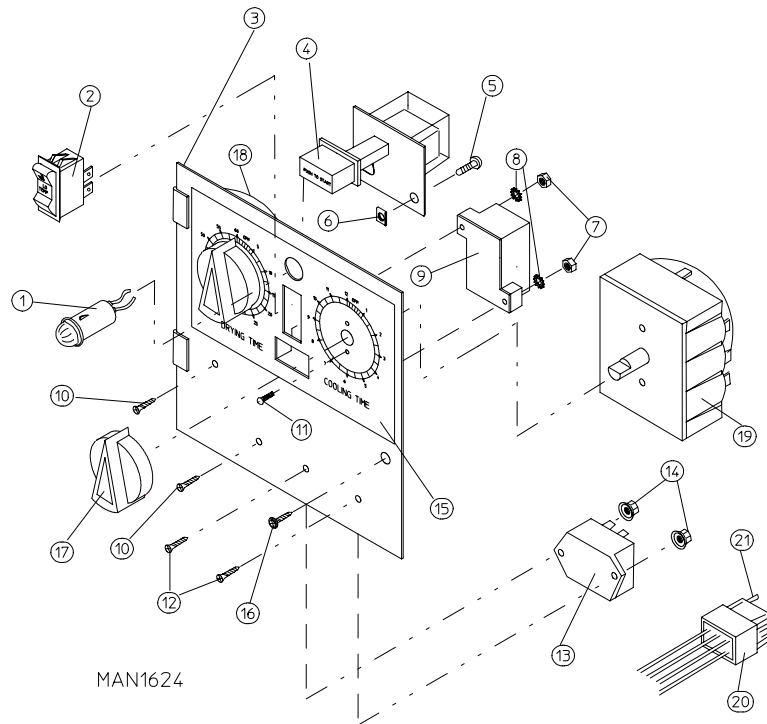
<u>Illus. No.</u>	<u>Part No.</u>	<u>Qty.</u>	<u>Description</u>
1	141403	1	24 VAC Transformer
2	150300	2	#10 x 1/2" Hex Washer TEK Screw
3	120715	1	30-Position Terminal Block
4	150002	2	#6-32 x 1" Phillips Round Head Screw
5	151000	2	#6-32 Pal Nut
6	136057	*	1/2-Amp (Slo Blo) Fuse
7	150301	*	#8-18 x 7/16" Self Drilling Screw
8	136008	*	Fuse Block/Strip ONLY
9	122641	1	15 Pin Microprocessor Connector
10	122706	*	Sockets ONLY
11	131931	1	Steam Valve Relay - 24 VAC (for Mechanical Steam Damper Models ONLY)
12	150415	2	#10-16 x 1/2" Phillips Round Head Crimptite Screw
13	137035	1	Motor Capacitor (for Mechanical Steam Damper Models ONLY)
14	323583	1	Capacitor Bracket (for Mechanical Steam Damper Models ONLY)
15	150300	2	#10 x 1/2" Hex Washer TEK Screw
16	132002	1	Transformer (for Mechanical Steam Damper Models 208 volts and higher)
17	150300	2	#10 x 1/2" Hex Washer TEK Screw

* As required.

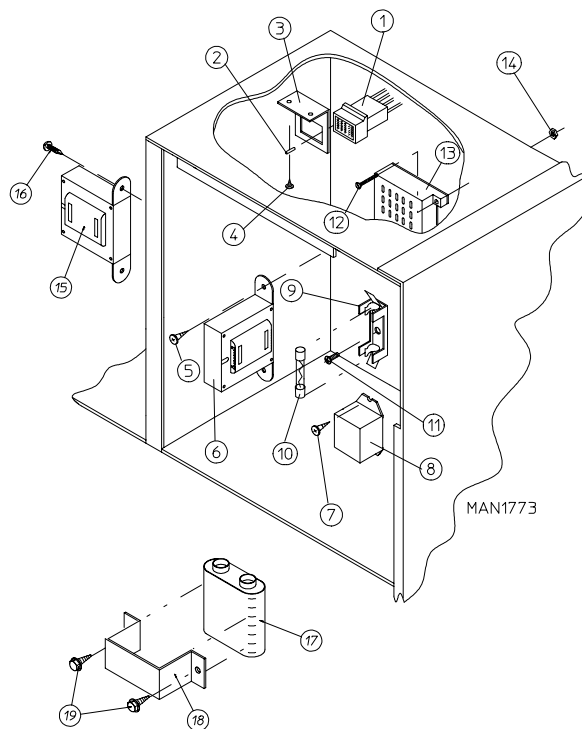


<u>Illus. No.</u>	<u>Part No.</u>	<u>Qty.</u>	<u>Description</u>
1	802112	1	Microprocessor Coin Vault Assembly Complete (includes illus. nos. 1 through 6)
	802117	1	Microprocessor Coin Vault ONLY
	802110	1	Non-Microprocessor Coin Vault Assembly Complete (includes illus. nos. 1 through 6)
	802115	1	Non-Microprocessor Coin Vault ONLY
2	160028	1	Cam for 1/4 Turn Lock ONLY
3	875061	1	1/4 Turn Lock with Key and Cam
	160105*	1	1/4 Turn Mer-Pel Key ONLY
4	802020	1	1/4 Turn Coin Box Assembly (includes illus. nos. 2 through 5)
	802019	1	1/4 Turn Coin Box ONLY without Face Plate
	125915	1	High Security (Greenwald) Coin Box Only with Key
5	802018	1	1/4 Turn Coin Box Face Plate ONLY
6	152014	4	1/4-20 Free Spin Wash Nut
7	102502	1	Control Door Support Rod
8	102601	1	Control Door Rod Retainer Clip
9	102600	1	Control Door Rod Catch

* Specify key number when ordering.



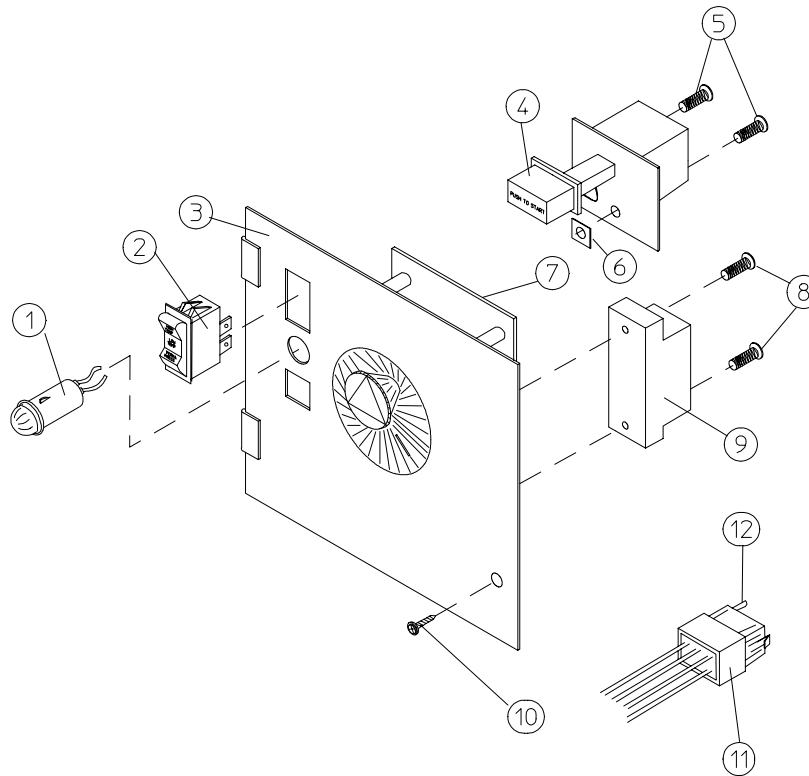
<u>Illus. No.</u>	<u>Part No.</u>	<u>Qty.</u>	<u>Description</u>
1	123005	1	Red Indicator Light - 24 VAC
2	122400	1	Rocker Heat Selector Switch
3	824015	1	Dual Timer Control Panel Assembly Complete - 24 VAC (includes illus. nos. 1 through 21)
	800051	1	Dual Timer Control Panel ONLY
4	131917	1	Push-to-Start Relay - 24 VAC
5	150207	2	#10-24 x 1/2" Round Head Machine Screw
6	154001	2	#10-24 Speed Nut
7	152000	2	#6-32 Hex Nut, 5/16" ATF
8	153010	2	#6 Star Washer
9	120713	1	18-Position Terminal Block
10	150002	2	#6-32 x 1" Phillips Round Head Machine Screw
11	150110	4	#8-32 x 1/4" Phillips Machine Screw
12	150001	2	#6-32 x 1/2" Phillips Round Head Machine Screw
13	131931	1	Dual Timer Relay - 24 VAC
14	151000	2	#6-32 Pal Nut
15	112050	1	Dual Timer Label ONLY
16	150415	1	#10-16 x 1/2" Phillips Round Head Crimptite Screw (for models mfd. as of March 1, 1994)
	160005	1	Spring Turn Latch (2-piece) ... Not Illustrated (for models mfd. prior to March 1, 1994)
17	124103	2	Arrow Timer Knob
18	124025	1	60 Minute Timer - 24 VAC
19	124030	1	15 Minute Timer - 24 VAC
20	122602	1	9-Pin Connector ONLY
21	122700	8	Pin Terminal ONLY
--	122801	1	Pin/Socket Extraction Tool



<u>Illus. No.</u>	<u>Part No.</u>	<u>Qty.</u>	<u>Description</u>
1	122603	1	9-Pin Socket Connector
2	122701	9	Socket Terminal ONLY
	122801	1	Pin/Socket Extraction Tool
3	315010	1	9-Pin Connector Bracket
4	150300	2	#10 x 1/2" Hex Washer TEK Screw
5	150300	2	#10 x 1/2" Hex Washer TEK Screw
6	-----	1	24 VAC Control Voltage Transformer (refer to Transformer Usage Listing for Gas/Steam Dryers on page 56) (refer to Transformer Usage Listing for Electric Dryers on page 57)
7	150415	2	#10-16 x 1/2" Phillips Round Head Crimptite Screw
8	131931	1	Steam Valve Relay (for Mechanical Steam Damper Models ONLY) - 24 VAC
9	136008	*	Fuse Block/Strip ONLY
10**	136057	*	1/2-Amp (Slo Blo) Fuse ONLY
11	150301	*	#8-18 x 7/16" Phillips Pan Head TEK Screw
12	150002	2	#6-32 x 1" Phillips Round Head Machine Screw
13	120715	1	30-Position Terminal Block
14	151000	2	#6-32 Pal Nut
15	132002	1	Transformer (for Mechanical Steam Damper 208 VAC and higher)
16	150300	2	#10 x 1/2" Hex Washer TEK Screw
17	137035	1	Motor Capacitor (for Mechanical Steam Damper Models ONLY)
18	323583	1	Capacitor Bracket (for Mechanical Steam Damper Models ONLY)
19	150300	2	#10 x 1/2" Hex Washer TEK Screw

* As required.

** Check fuse on dryer for verification.

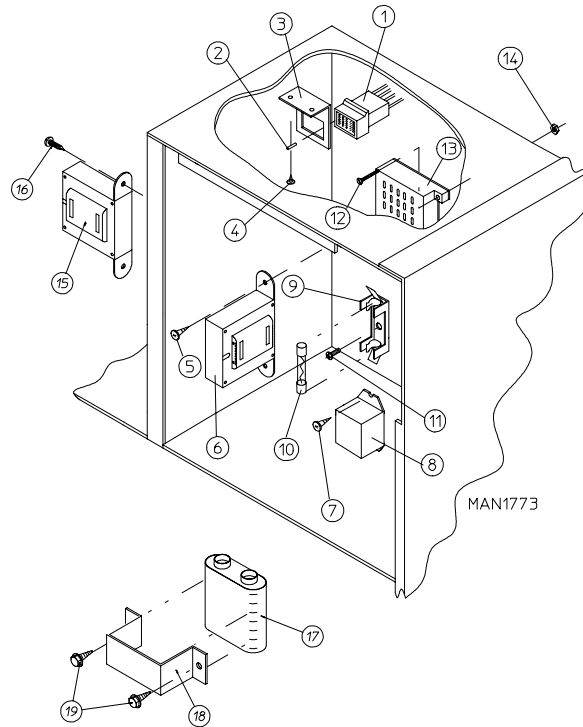


MAN1625

<u>Illus. No.</u>	<u>Part No.</u>	<u>Qty.</u>	<u>Description</u>
1	123005	1	Red Indicator Light - 24 VAC
2	122400	1	Rocker Heat Selector Switch
3	824020	1	Coin Meter Control Panel Assembly Complete - 24 VAC (includes illus. nos. 1 through 6 and 8 through 12)
	800054	1	Coin Meter Control Panel ONLY
4	131917	1	Push-to-Start Relay - 24 VAC
5	150207	2	#10-24 x 1/2" Round Head Machine Screw
6	154001	2	#10-24 Speed Nut
7*	125601	1	25¢ Coin Meter - 24 VAC (Specify Timing)
8	150303	2	#4 x 3/4" Pan Head "A" Screw
9	120712	1	12-Position Terminal Block
10	150415	1	#10-16 x 1/2" Phillips Round Head Crimptite Screw (for models mfd. as of March 3, 1994)
	160005	1	Spring Turn Latch (2-piece) For models mfd. as of March 3, 1994
11	122602	1	9-Pin Connector ONLY
12	122700	9	Pin Terminal ONLY
--	122801	1	Pin/Socket Extraction Tool

* Consult factory for coin meters not listed.

NOTE: For **Coin Meter Replacement Parts** refer to page 55.

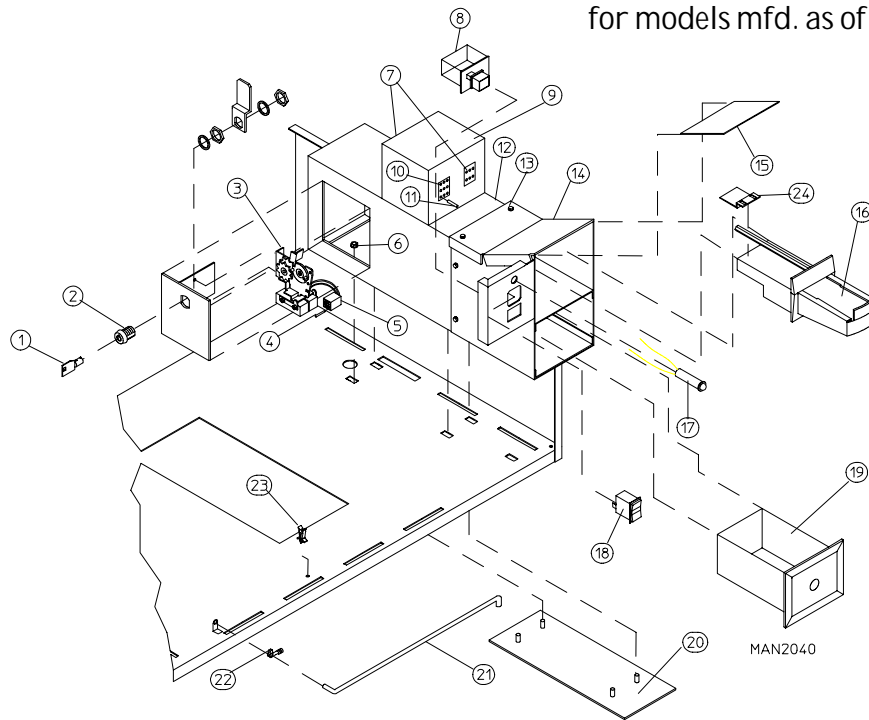


<u>Illus. No.</u>	<u>Part No.</u>	<u>Qty.</u>	<u>Description</u>
1	122603	1	9-Pin Socket Connector
2	122701	9	Socket Terminal ONLY
	122801	1	Pin/Socket Extraction Tool
3	315010	1	9-Pin Connector Bracket
4	150300	2	#10 x 1/2" Hex Washer TEK Screw
5	150300	2	#10 x 1/2" Hex Washer TEK Screw
6	-----	1	24 VAC Control Voltage Transformer (refer to Transformer Usage Listing for Gas/Steam Dryers on page 56) (refer to Transformer Usage Listing for Electric Dryers on page 57)
7	150415	2	#10-16 x 1/2" Phillips Round Head Crimptite Screw
8	131931	1	Steam Valve Relay (for Mechanical Steam Damper Models ONLY) - 24 VAC
9	136008	*	Fuse Block/Strip ONLY
10**	136057	*	1/2-Amp (Slo Blo) Fuse ONLY
11	150301	*	#8-18 x 7/16" Phillips Pan Head TEK Screw
12	150002	2	#6-32 x 1" Phillips Round Head Machine Screw
13	120715	1	30-Position Terminal Block
14	151000	2	#6-32 Pal Nut
15	132002	1	Transformer (for Mechanical Steam Damper 208 VAC and higher)
16	150300	2	#10 x 1/2" Hex Washer TEK Screw
17	137035	1	Motor Capacitor (for Mechanical Steam Damper Models ONLY)
18	323583	1	Capacitor Bracket (for Mechanical Steam Damper Models ONLY)
19	150300	2	#10 x 1/2" Hex Washer TEK Screw

* As required.

** Check fuse on dryer for verification.

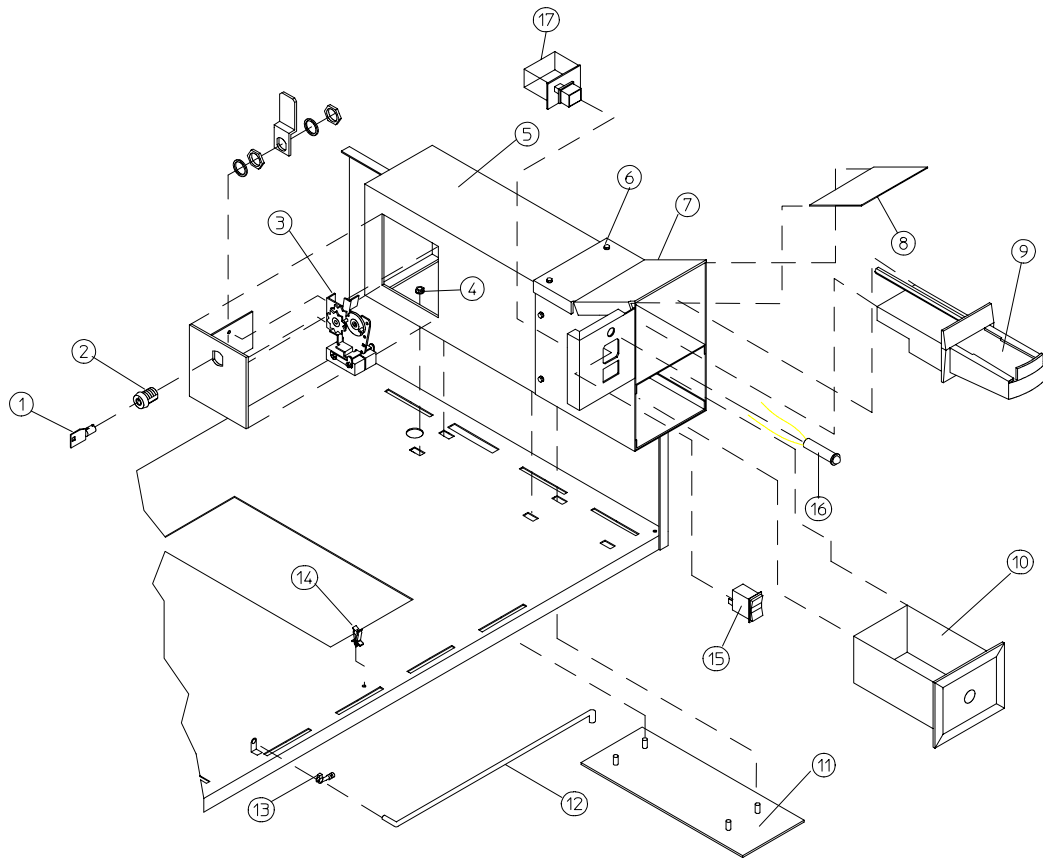
for models mfd. as of January 13, 1995



<u>Illus. No.</u>	<u>Part No.</u>	<u>Qty.</u>	<u>Description</u>
1*	160199	1	Key ONLY for Slide Meter Lock
2	160099	1	Lock / Key / Cam and Hardware
3	125908	1	Slide Meter Accumulator - 24 VAC
4	122643	9	Mate-N-Lock Pin ONLY
5	122642	1	9-Position Mini-Universal Socket
6	152014	4	#1/4-20 Free Spin Wash Nut
7	122631	2	6-Position Connector (Mate-N-Lock)
8	131917	1	Push-to Start Relay - 24 VAC
9	881100	1	Slide Meter Modular J-Box Assembly
10	122603	1	9-Position Connector (Mate-N-Lock)
11	122701	21	Socket Terminal ONLY
12	125900	1	Slide Meter Case ONLY with Door Less Lock
13	154203	6	1/4" Drive Rivet
14	801700	1	Slide Meter Extension ONLY with Mirror (includes illus. nos. 14 and 15)
15	315404	1	Stainless Steel Mirror ONLY)
16	-----	1	Typical Slide Meter Coin Chute (<i>Not Available from ADC</i>)
17	123005	1	Red Indicator Light - 24 VAC
18	122400	1	Rocker Heat Selector Switch
19	-----	1	Typical Slide Meter Coin Box (<i>Not Available from ADC</i>)
20	801701	1	Slide Meter Case Mounting Plate
21	102502	1	Control Door Support Rod
22	102601	1	Control Door Rod Retainer Clip
23	102600	1	Control Door Support Rod Catch
24	125903	1	Slide Meter Extension

* Specify key number when ordering.

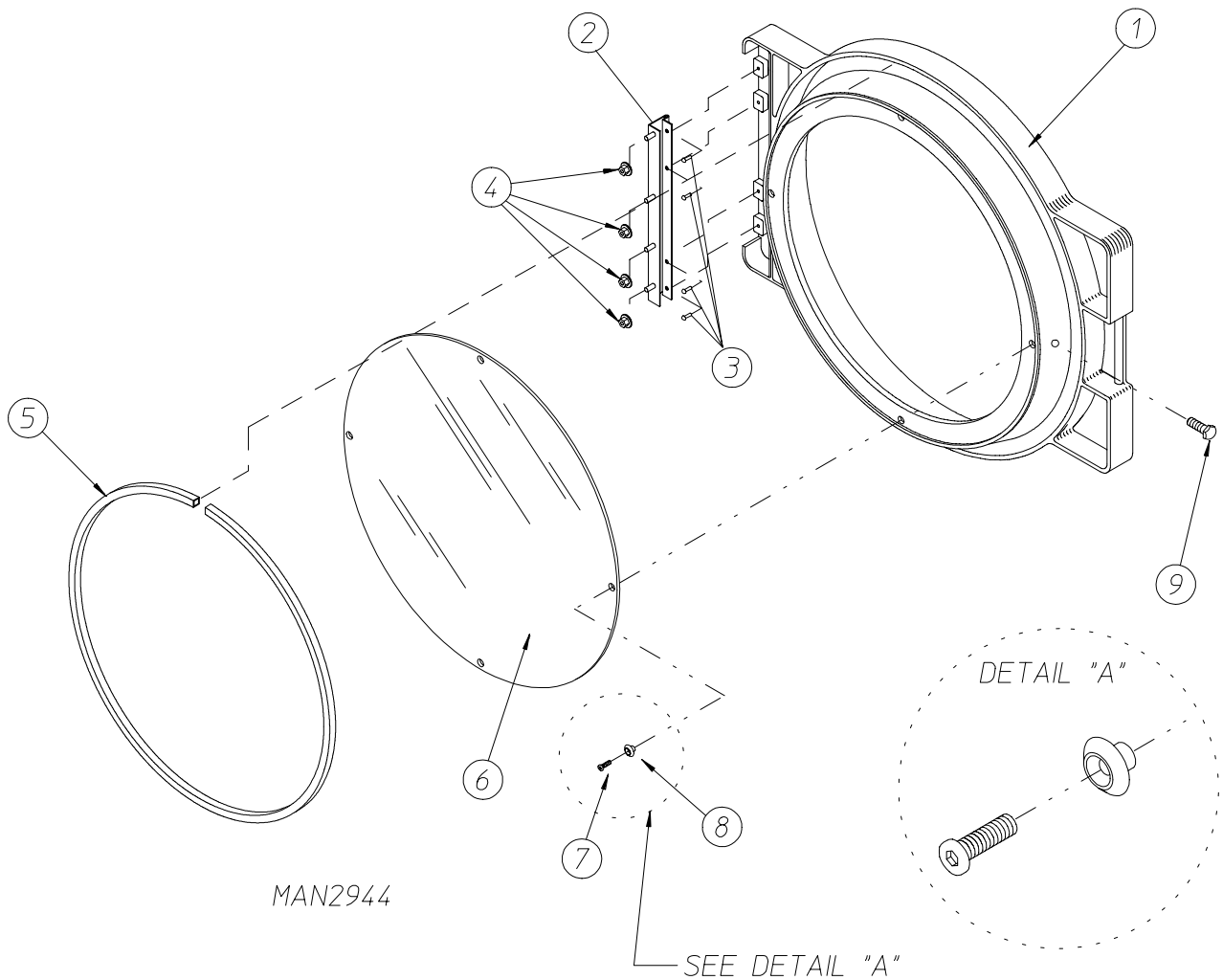
for models mfd. prior to January 13, 1995



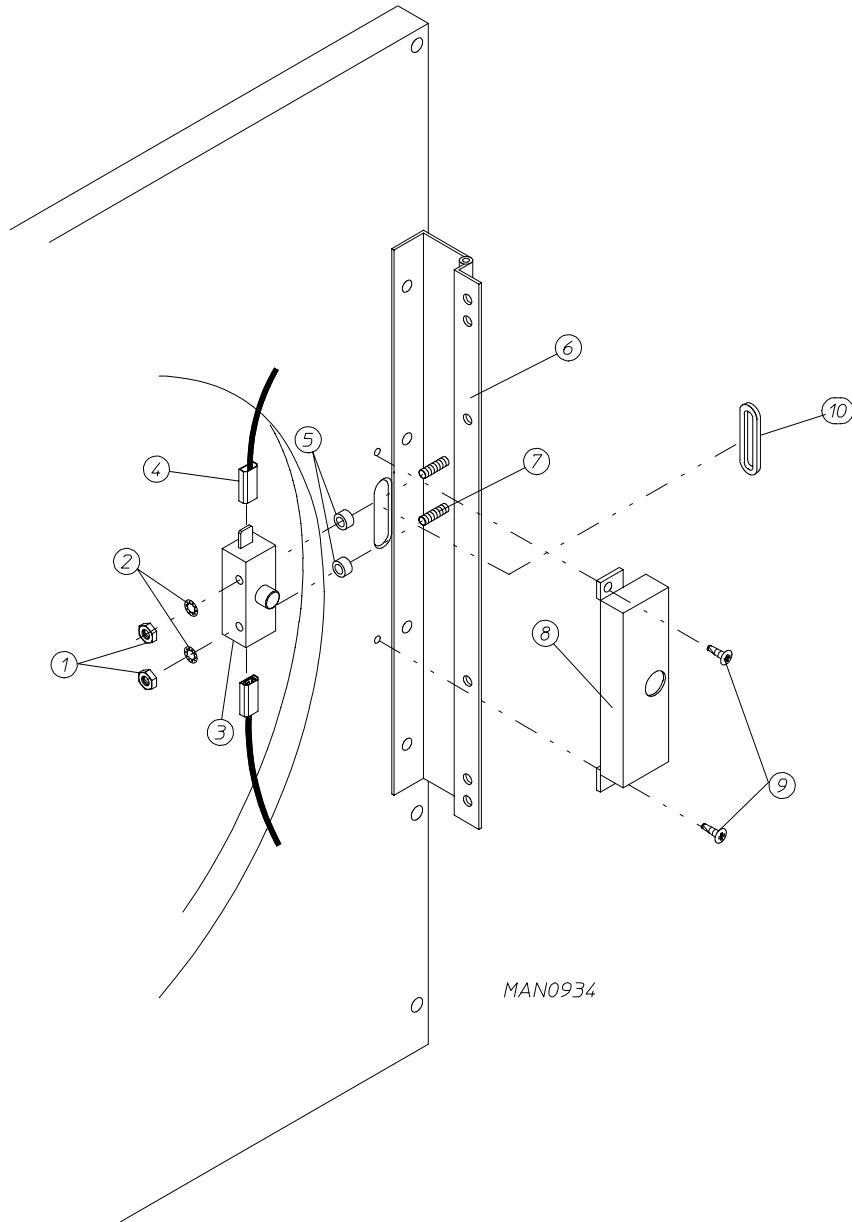
MAN0272

<u>Illus. No.</u>	<u>Part No.</u>	<u>Qty.</u>	<u>Description</u>
1*	160199	1	Key ONLY for Slide Meter Lock
2	160099	1	Lock / Key / Cam and Hardware
3	125908	1	Slide Meter Accumulator - 24 VAC
4	152014	4	#1/4-20 Free Spin Wash Nut
5	125900	1	Slide Meter Case ONLY with Door Less Lock
6	154203	6	1/4" Drive Rivet
7	801700	1	Slide Meter Extension ONLY with Mirror (includes illus. nos. 14 and 15)
8	315404	1	Stainless Steel Mirror ONLY
9	-----	1	Typical Slide Meter Coin Chute (<i>Not Available from ADC</i>)
10	-----	1	Typical Slide Meter Coin Box (<i>Not Available from ADC</i>)
11	801701	1	Slide Meter Case Mounting Plate
12	102502	1	Control Door Support Rod
13	102601	1	Control Door Rod Retainer Clip
14	102600	1	Control Door Support Rod Catch
15	122400	1	Rocker Heat Selector Switch
16	123005	1	Red Indicator Light - 24 VAC
17	131917	1	Push-to-Start Relay - 24 VAC

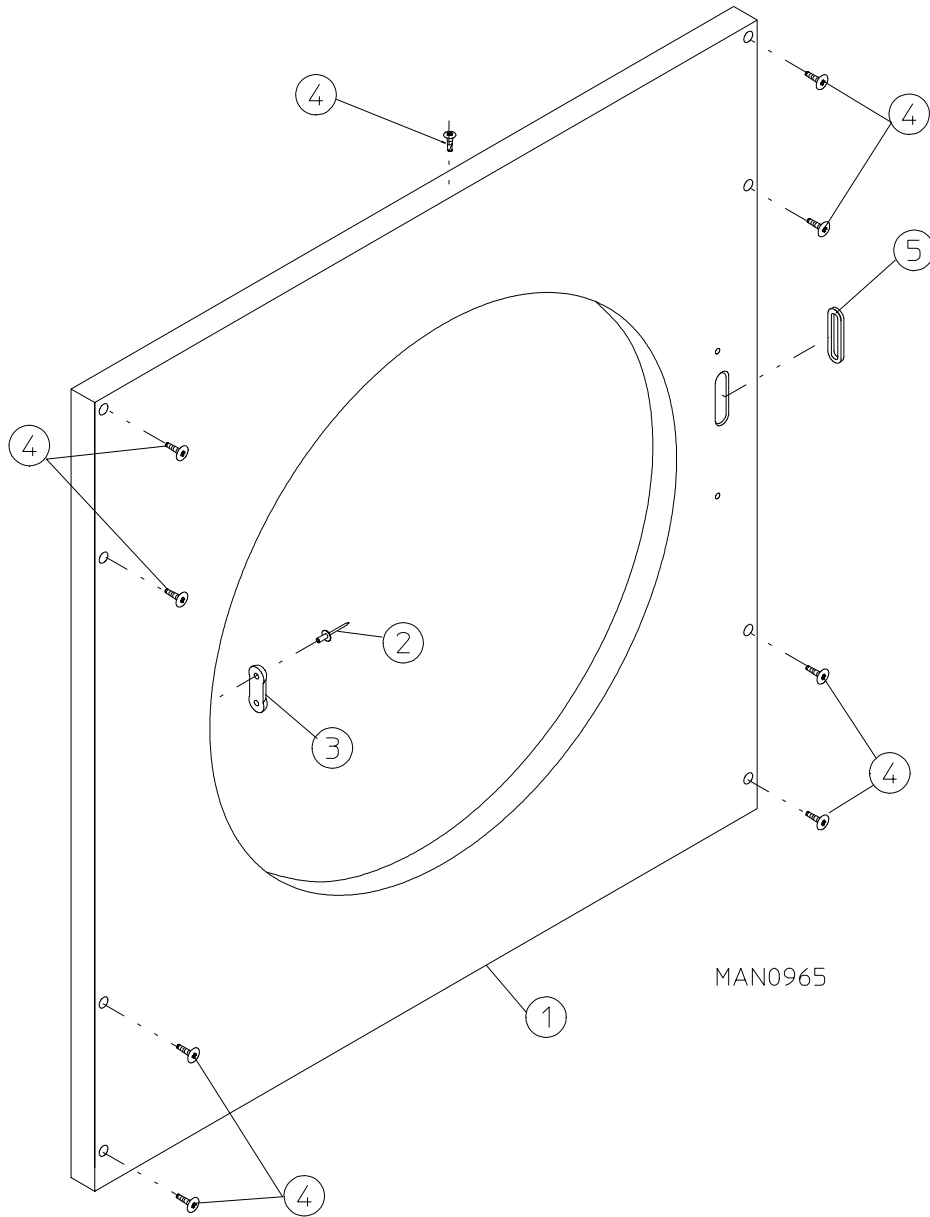
* Specify key number when ordering.



<u>Illus. No.</u>	<u>Part No.</u>	<u>Qty.</u>	<u>Description</u>
1	881421	1	Gray Plastic Main Door Assembly Complete with Mechanical Fasteners (includes illus. nos. 1 and 5 through 9)
2	800448	4	12-1/2" Stainless Steel Main Door Hinge Assembly
3	150410	4	#10-24 x 3/8" Phillips Pan Head Taptite Screw
4	152014	1	1/4-20 Free Spin Wash Nut
5	102353	1	Main Door Gasket
6	102212	1	20-7/16" Door Glass with (4) Holes
	170730	1	Main Door Glass Adhesive (10.3 oz. cartridge)
7	150448	4	1/2" Stainless Steel Flat Head Allen Screw
8	170319	4	Door Glass (Nylon) Spacer
9	150431	1	Main Door Latch Screw (#10 x 7/16" Dome Hex Head)

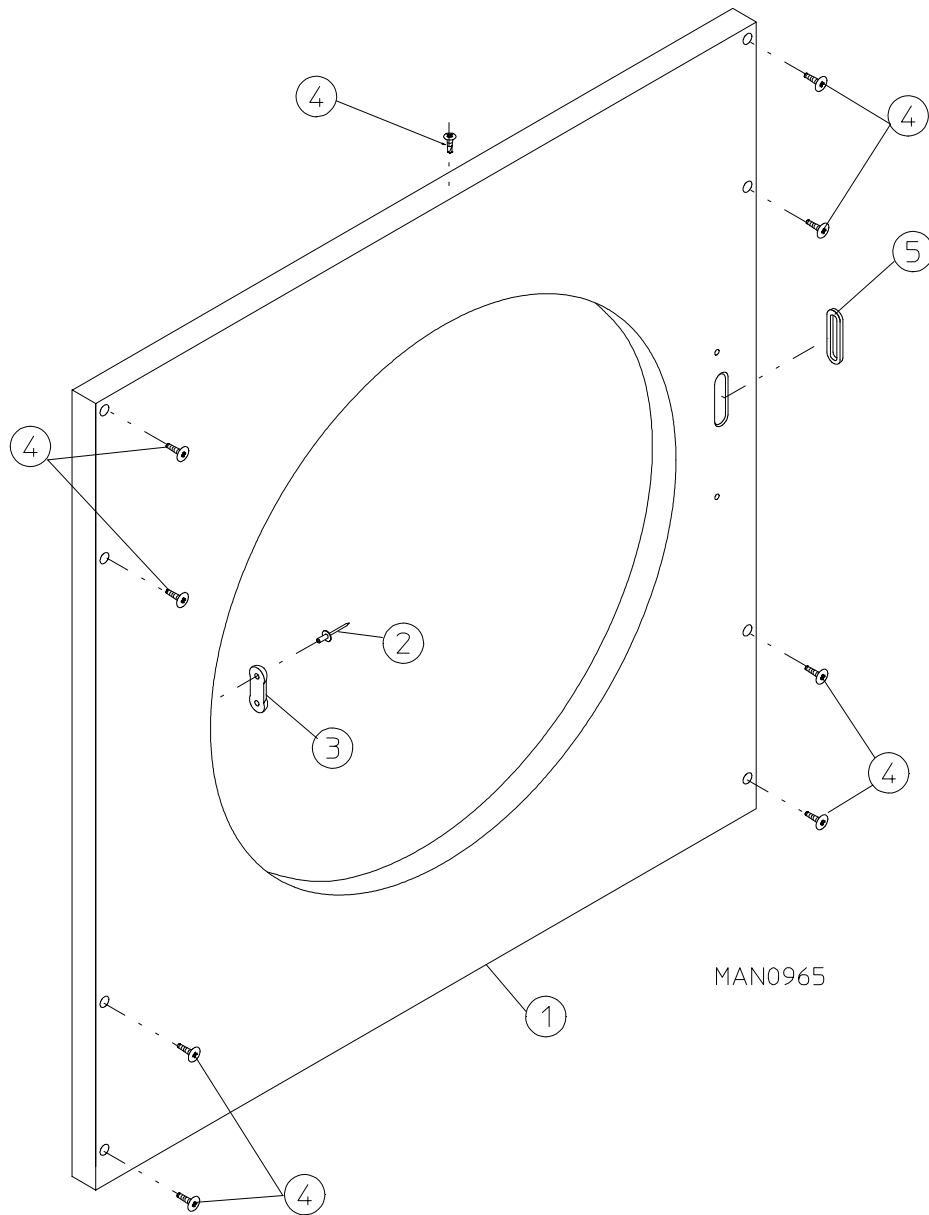


<u>Illus. No.</u>	<u>Part No.</u>	<u>Qty.</u>	<u>Description</u>
1	152013	2	#6-32 Hex Nut
2	153008	2	#6 Lock Washer
3	137005	1	Single Pole Door Switch
4	121028	2	Insulated Female Terminal
5	154281	2	3/8" Standard Nylon Spacers
6	800448	1	12-1/2" Stainless Steel Main Door Hinge Assembly (includes illus. nos. 6 and 7)
7	153565	2	#6-32 x 1" Self Clinching Stud
8	313218	1	Main Door Switch Housing
9	150201	2	#10-32 x 1/4" Phillips Pan Head Screw
10	121405	1	Rubber Grommet



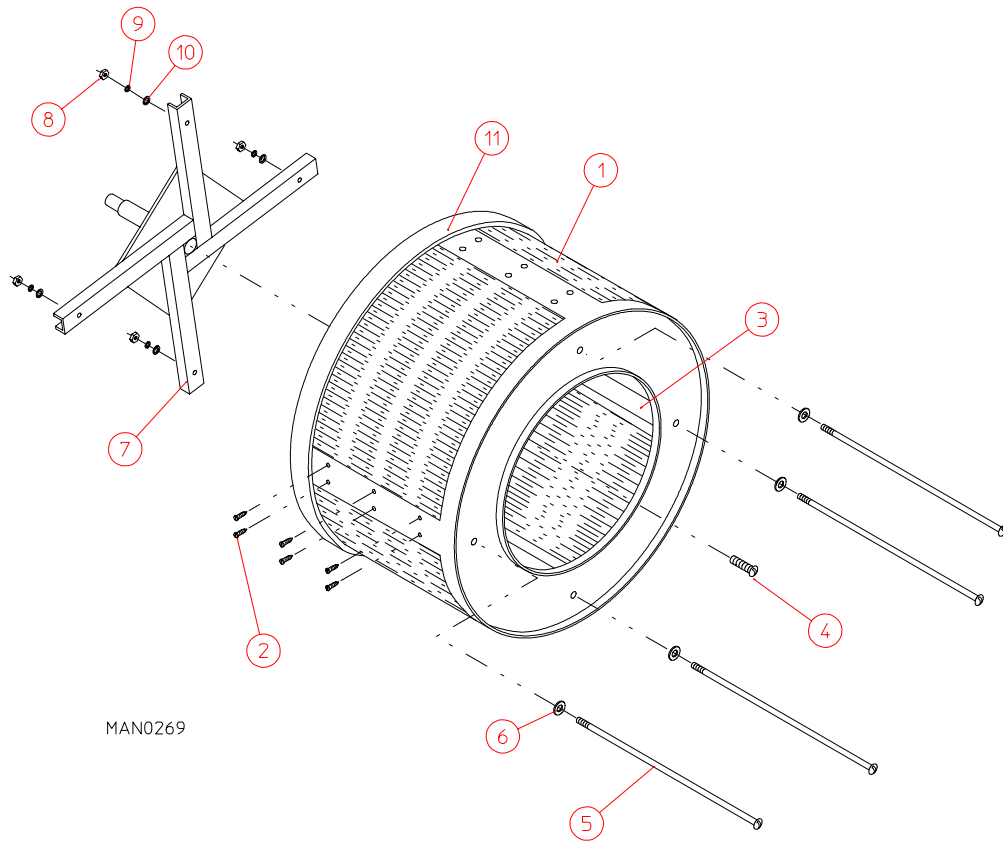
<u>Illus. No.</u>	<u>Part No.</u>	<u>Qty.</u>	<u>Description</u>
1	875300*	1	AD-15 R.H. Insulated Front Panel Assembly Complete (Latch-Type) (includes illus. nos. 1, 2, 3, and 6)
	875311	1	AD-15 Stainless Steel R.H. Insulated Front Panel Assembly Complete (Latch-Type) (includes illus. nos. 1, 2, 3, and 6)
2	154215	2	1/8" Pop Rivet
3	170330	1	Friction Door Latch
4	150300	1	#10 x 1/2" Hex Washer TEK Screw
5	150415	8	#10-16 x 1/2" Phillips Round Head Crimptite Screw
6	121405	1	Rubber Grommet

* Specify color when ordering.



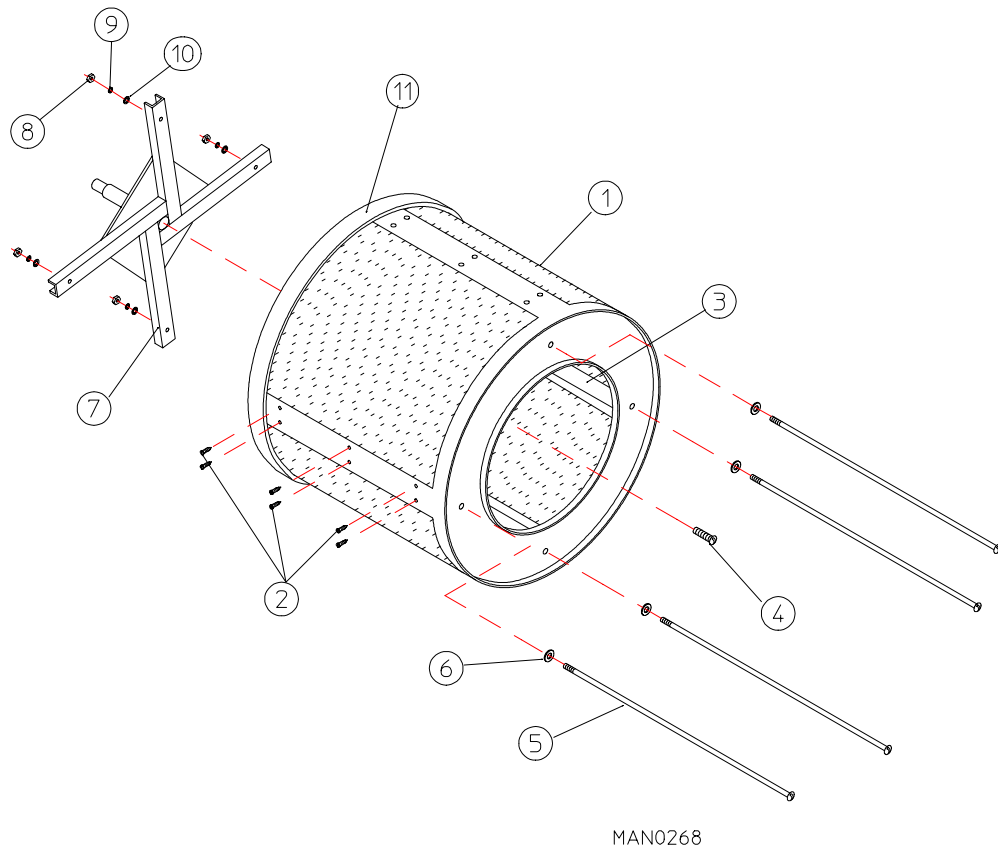
<u>Illus. No.</u>	<u>Part No.</u>	<u>Qty.</u>	<u>Description</u>
1	875301*	1	AD-25 R.H. Insulated Front Panel Assembly Complete (Latch-Type) (includes illus. nos. 1, 2, 3, and 6)
	875312	1	AD-25 Stainless Steel R.H. Insulated Front Panel Assembly Complete (Latch-Type) (includes illus. nos. 1, 2, 3, and 6)
2	154215	2	1/8" Pop Rivet
3	170330	1	Friction Door Latch
4	150300	1	#10 x 1/2" Hex Washer TEK Screw
5	150415	8	#10-16 x 1/2" Phillips Round Head Crimptite Screw
6	121405	1	Rubber Grommet

* Specify color when ordering.



<u>Illus. No.</u>	<u>Part No.</u>	<u>Qty.</u>	<u>Description</u>
1*	800700	1	AD-15 Galvanized Basket (Tumbler) ONLY (without felt collar)
	800850	1	AD-15 Stainless Steel Basket (Tumbler) ONLY (without felt collar)
	800812	1	AD-15 Galvanized Basket (Tumbler) and Support Assembly (includes illus. nos. 1 through 10)
	800860	1	AD-15 Stainless Steel Basket (Tumbler) and Support Assembly (includes illus. nos. 1 through 10)
2	150415	24	#10-16 x 1/2" Phillips Round Head Crimptite Screw
3	301307	4	AD-15 Galvanized Basket (Tumbler) Rib ONLY
	301407	4	AD-15 Galvanized Basket (Tumbler) Rib ONLY
4	150518	1	#5/16-18 x 3/8" Socket Button Head Screw
5	100902	4	#5/16-18 x 31" Tie Rod
6	153001	4	5/16" Flat Washer
7	800610	1	AD-15 Basket (Tumbler) Support ONLY
8	152004	4	#5/16-18 Hex Nut
9	153002	4	5/16" Lock Washer
10	153001	4	5/16" Flat Washer
11	116002	1	Felt Collar ONLY
--	401010	1	#847 Adhesive for Felt Collar (5.0 oz tube)

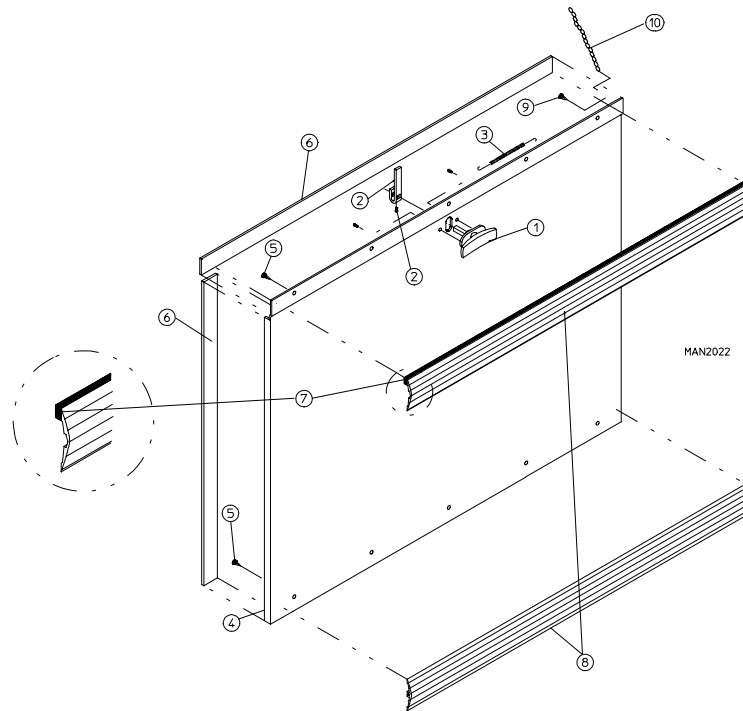
* Felt collar not included and must be ordered separately.



MAN0268

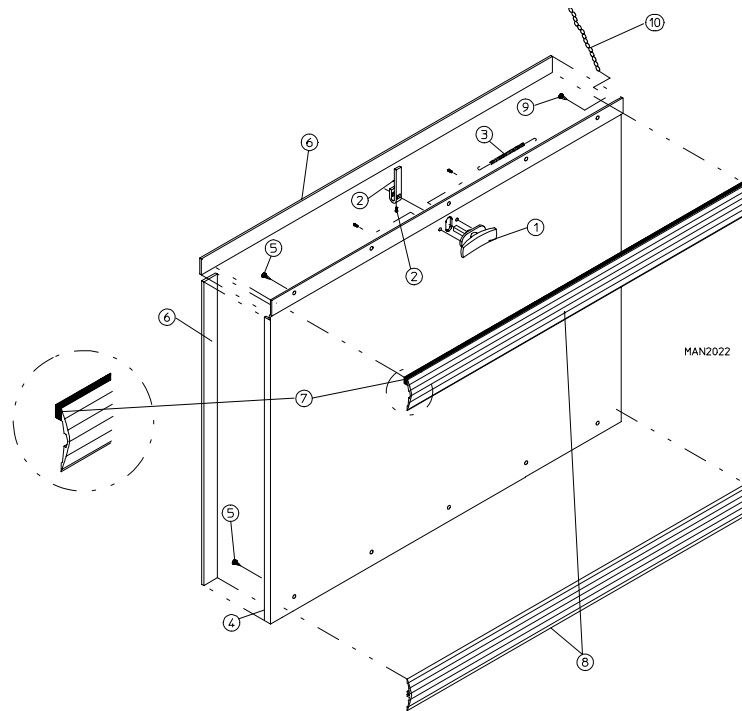
<u>Illus. No.</u>	<u>Part No.</u>	<u>Qty.</u>	<u>Description</u>
1*	800702	1	AD-25 Galvanized Basket (Tumbler) ONLY (without felt collar)
	800852	1	AD-25 Stainless Steel Basket (Tumbler) ONLY (without felt collar)
	800814	1	AD-25 Galvanized Basket (Tumbler) and Support Assembly (includes illus. nos. 1 through 10)
	800862	1	AD-25 Stainless Steel Basket (Tumbler) and Support Assembly (includes illus. nos. 1 through 10)
2	150415	24	#10-16 x 1/2" Phillips Round Head CrimpTite Screw
3	301305	4	AD-25 Galvanized Basket (Tumbler) Rib ONLY
	301405	4	AD-25 Galvanized Basket (Tumbler) Rib ONLY
4	150518	1	#5/16-18 x 3/8" Socket Button Head Screw
5	100902	4	#5/16-18 x 31" Tie Rod
6	153001	4	5/16" Flat Washer
7	800611	1	AD-25 Basket (Tumbler) Support ONLY
8	152004	4	#5/16-18 Hex Nut
9	153002	4	5/16" Lock Washer
10	153001	4	5/16" Flat Washer
11	116002	1	Felt Collar ONLY
--	401010	1	#847 Adhesive for Felt Collar (5.0 oz tube)

* Felt collar not included and must be ordered separately.



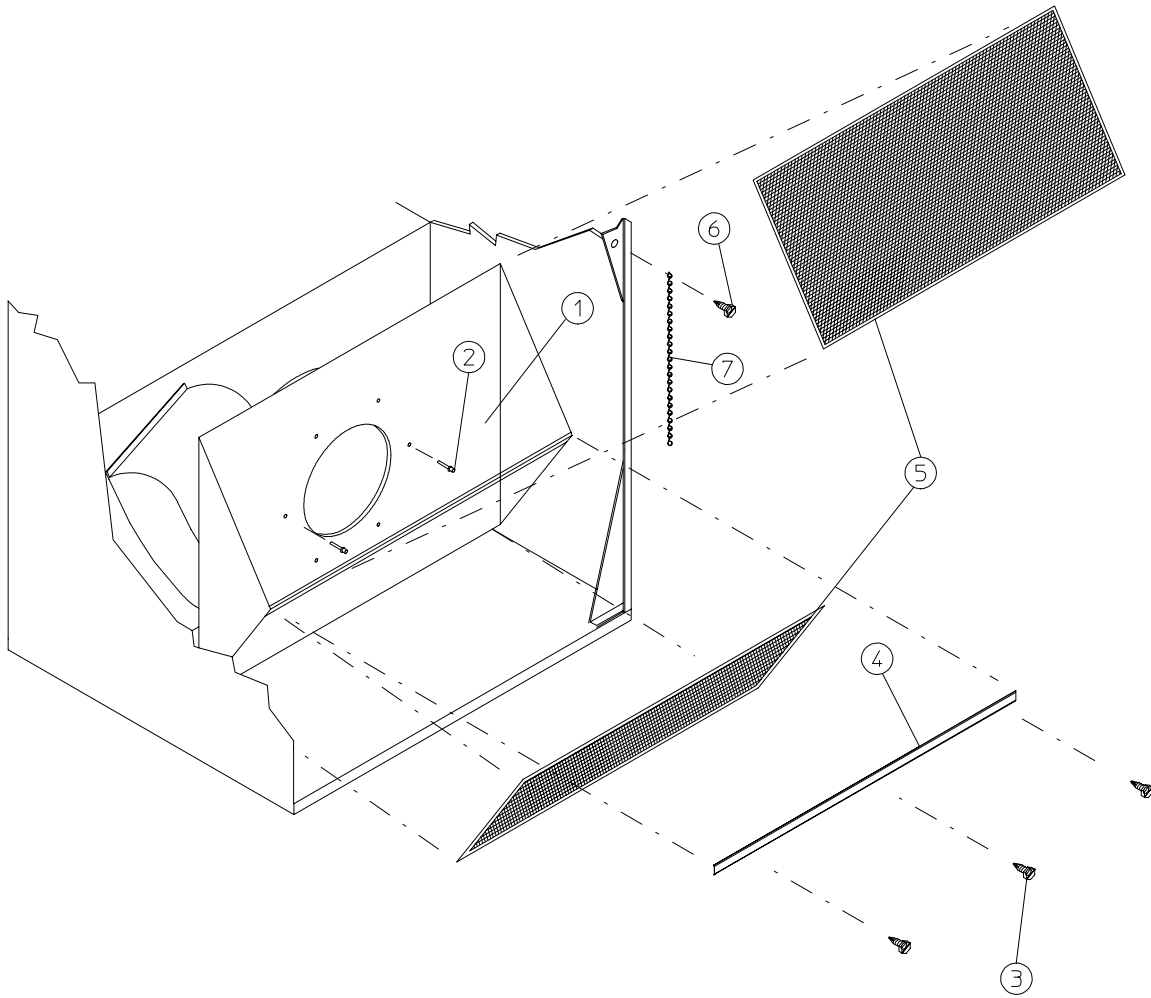
<u>Illus. No.</u>	<u>Part No.</u>	<u>Qty.</u>	<u>Description</u>
1	160001	1	Lock Assembly with Key (for Coin Models ONLY)
	160103	1	Key ONLY
	800150	1	Knob Latch Kit Assembly (for Non-Coin Models ONLY)
	160200	1	Knob Latch ONLY with Two (2) Screws (for Non-Coin Models ONLY)
	160003	1	Dummy Lock ONLY (for Non-Coin Models ONLY)
2	160104	1	MK-100 Key ONLY (<i>Master Key</i>)
	160008	1	Lock Cam For AD-100 Lock and Dummy Lock
	160009	1	Knob Latch Adjustable Cam (for Non-Coin Models ONLY)
3	150425	1	#12-24 x 3/8" R.H. Machine Screw (for Knob Latch Adjustable Cam)
3	157000	1	Drop Lint Door Spring
4	800215*	1	AD-15 Drop Lint Door Assembly (includes illus. nos. 4 through 8)
	800230*	1	AD-15 Insulated Drop Lint Door Assembly (includes illus. nos. 4 through 8)
	800239	1	AD-15 Stainless Steel Drop Lint Door Assembly
	5	150201	10
6	117600	7	Noise Suppressor Tape (sold in feet)
7	117603	3	Suppressor Tape/Gasket (sold in feet) For models mfd. as of February 8, 1995
	102307	3	Trim Bumper Gasket (sold in feet) For models mfd. prior to February 8, 1995
8	180210	2	AD-15 Trim/Kick Plate (31-1/8" Long)
9	150419	2	#6 x 1/2" Tamper Proof TEK Screw
	150418	1	Tamper Proof Screw Hand Driver
10	108120	1	Chain For Drop Lint Door

* Specify color when ordering.



<u>Illus. No.</u>	<u>Part No.</u>	<u>Qty.</u>	<u>Description</u>
1	160001	1	AD-100 Lock Assembly with Key (for Coin Models ONLY)
	160103	1	AD-100 Key ONLY
	800150	1	Knob Latch Kit Assembly (for Non-Coin Models ONLY)
	160200	1	Knob Latch ONLY with Two (2) Screws (for Non-Coin Models ONLY)
	160003	1	Dummy Lock ONLY (for Non-Coin Models ONLY)
2	160104	1	MK-100 Key ONLY (<i>Master Key</i>)
	160008	1	Lock Cam For AD-100 Lock and Dummy Lock
	160009	1	Knob Latch Adjustable Cam (for Non-Coin Models ONLY)
3	150425	1	#12-24 x 3/8" R.H. Machine Screw (for Knob Latch Adjustable Cam)
3	157000	1	Drop Lint Door Spring
4	800219*	1	AD-25 Drop Lint Door Assembly (includes illus. nos. 4 through 8)
	800232*	1	AD-25 Insulated Drop Lint Door Assembly (includes illus. nos. 4 through 8)
	800243	1	AD-25 Stainless Steel Drop Lint Door Assembly
	5	150201	10
6	117600	7	Noise Suppressor Tape (sold in feet)
7	117603	3	Suppressor Tape/Gasket (sold in feet) For models mfd. as of February 8, 1995
	102307	3	Trim Bumper Gasket (sold in feet) For models mfd. prior to February 8, 1995
8	180210	2	AD-25 Trim/Kick Plate (31-1/8" Long)
9	150419	2	#6 x 1/2" Tamper Proof TEK Screw
	150418	1	Tamper Proof Screw Hand Driver
10	108120	1	Chain For Drop Lint Door

* Specify color when ordering.

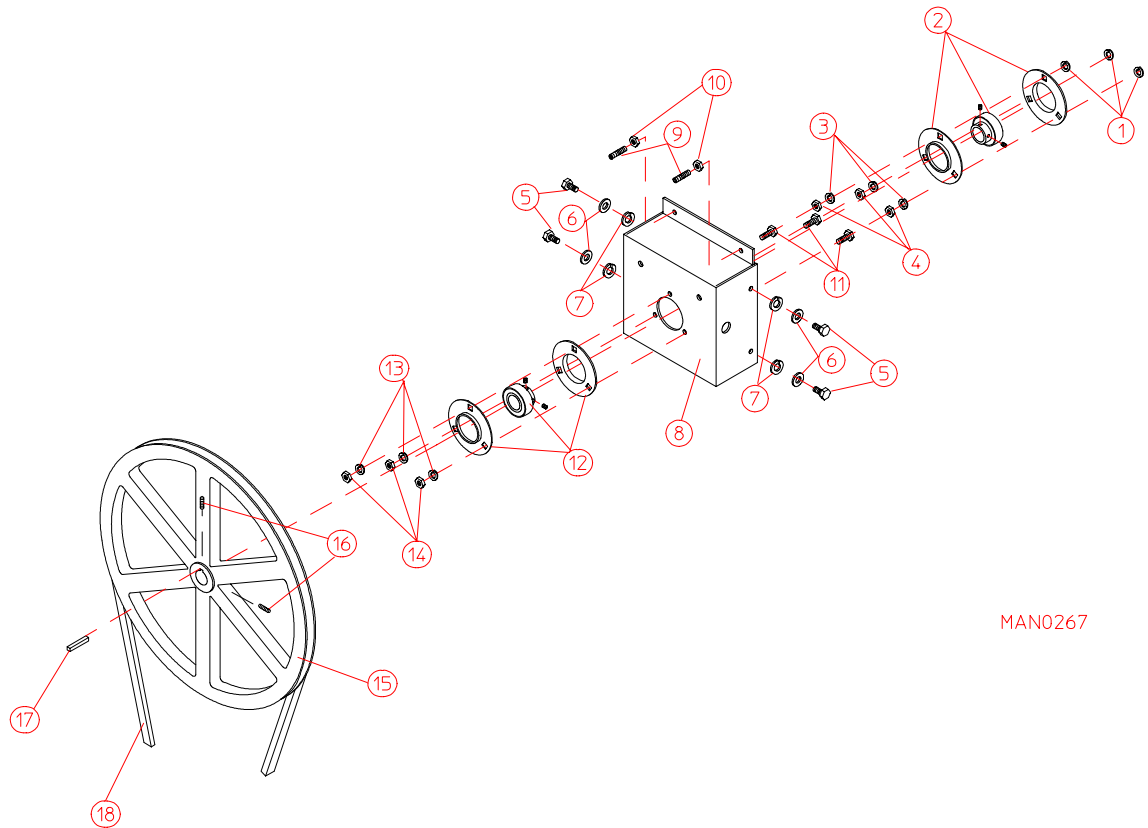


MAN0275

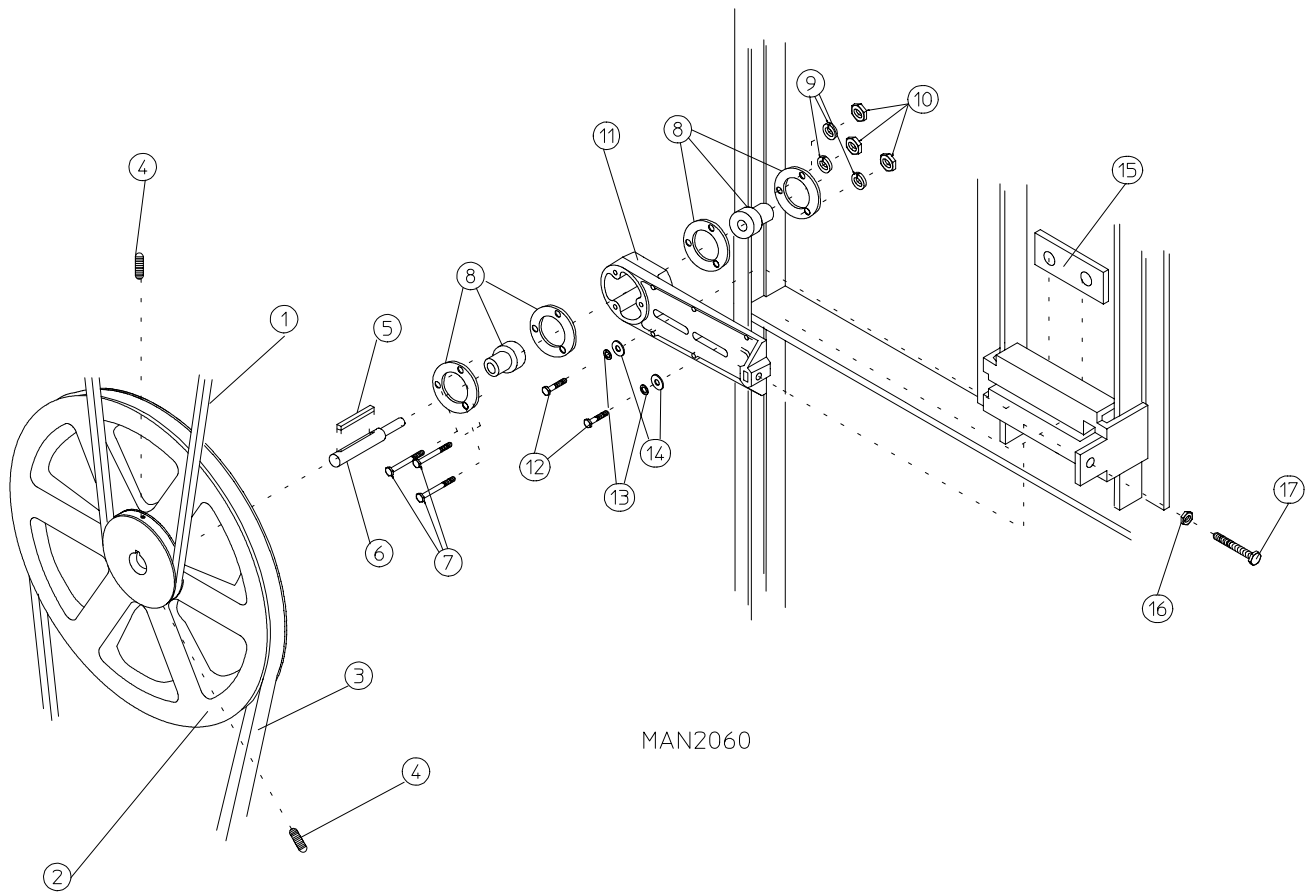
<u>Illus. No.</u>	<u>Part No.</u>	<u>Qty.</u>	<u>Description</u>
1	800425*	1	AD-15/AD-25 Choked Lint Trap Assembly Complete (includes illus. nos. 1, 3, 4, and 5)
	800426*	1	AD-15/AD-25 Choked Lint Trap ONLY
	800400**	1	AD-15/AD-25 Lint Trap Assembly Complete (includes illus. nos. 1, 3, 4, and 5)
	800403**	1	AD-15/AD-25 Lint Trap ONLY
2	154200	6	5/32" Pop Rivet
3	150300	3	#10 x 1/2" Hex Washer TEK Screw
4	304100	1	Lint Screen Holder ONLY
5	800500	2	AD-15/AD-25 Lint Screen ONLY
6	150419	2	#6 x 1/2" Tamper Proof TEK Screw
7	108120	1	Chain for Drop Lint Door
-	150418	1	Tamper Proof Screw Hand Driver

* For Gas Models ONLY.

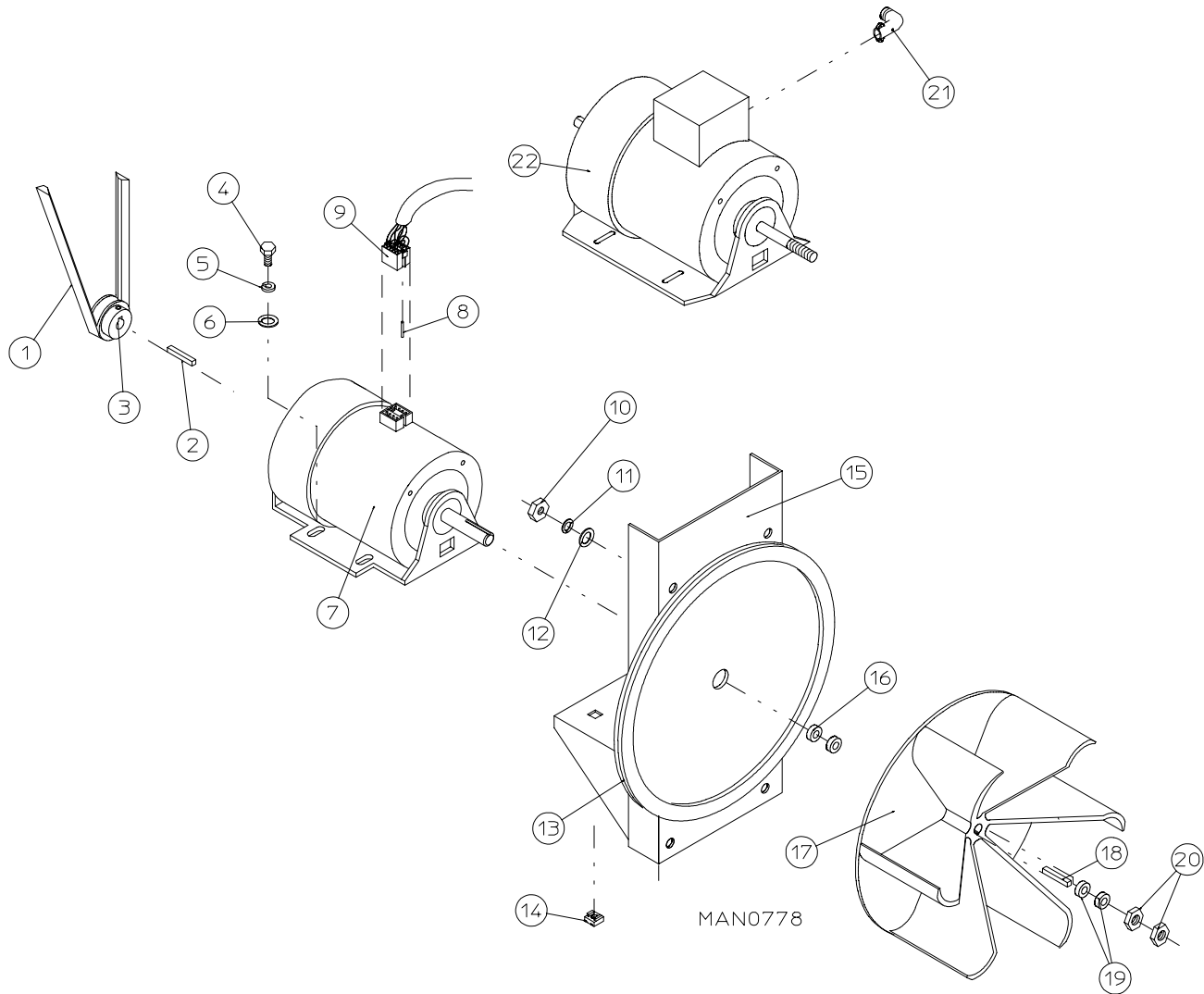
** For Electric Models and Steam Models ONLY.



<u>Illus. No.</u>	<u>Part No.</u>	<u>Qty.</u>	<u>Description</u>
1	153002	3	5/16" Lock Washer
2	100213	1	1-1/4" Flange Bearing ONLY
3	153002	3	5/16" Lock Washer
4	152004	3	#5/16-18 Hex Nut\
5	150501	4	#5/16-18 x 3/4" Hex Head Machine Bolt
6	153002	4	5/16" Lock Washer
7	153004	4	3/8" Flat Washer
8	801100	1	1" Bearing Box Assembly Complete (includes illus. nos. 8 through 14)
	801105	1	Bearing Box ONLY
9	150608	2	#5/16-18 x 1-1/4" Allen Set Screw
10	152004	2	#5/16-18 Hex Nut
11	150501	3	#5/16-18 x 3/4" Hex Head Machine Bolt
12	100201	1	1" Flange Bearing ONLY
13	153002	3	5/16" Lock Washer
14	152004	3	#5/16-18 Hex Nut
15	101100	1	18" Pulley ONLY
16	154301	2	#5/16-18 x 5/16" Set Screw
17	100713	1	1/4" x 1/4" x 7/8" Key
18	100108	1	5L680 "V" Belt (tumbler to idler) For AD-15 50/60 Hz For AD-25 60 Hz ONLY
	100107	1	5L670 "V" Belt (tumbler to idler) For AD-15 50 Hz ONLY



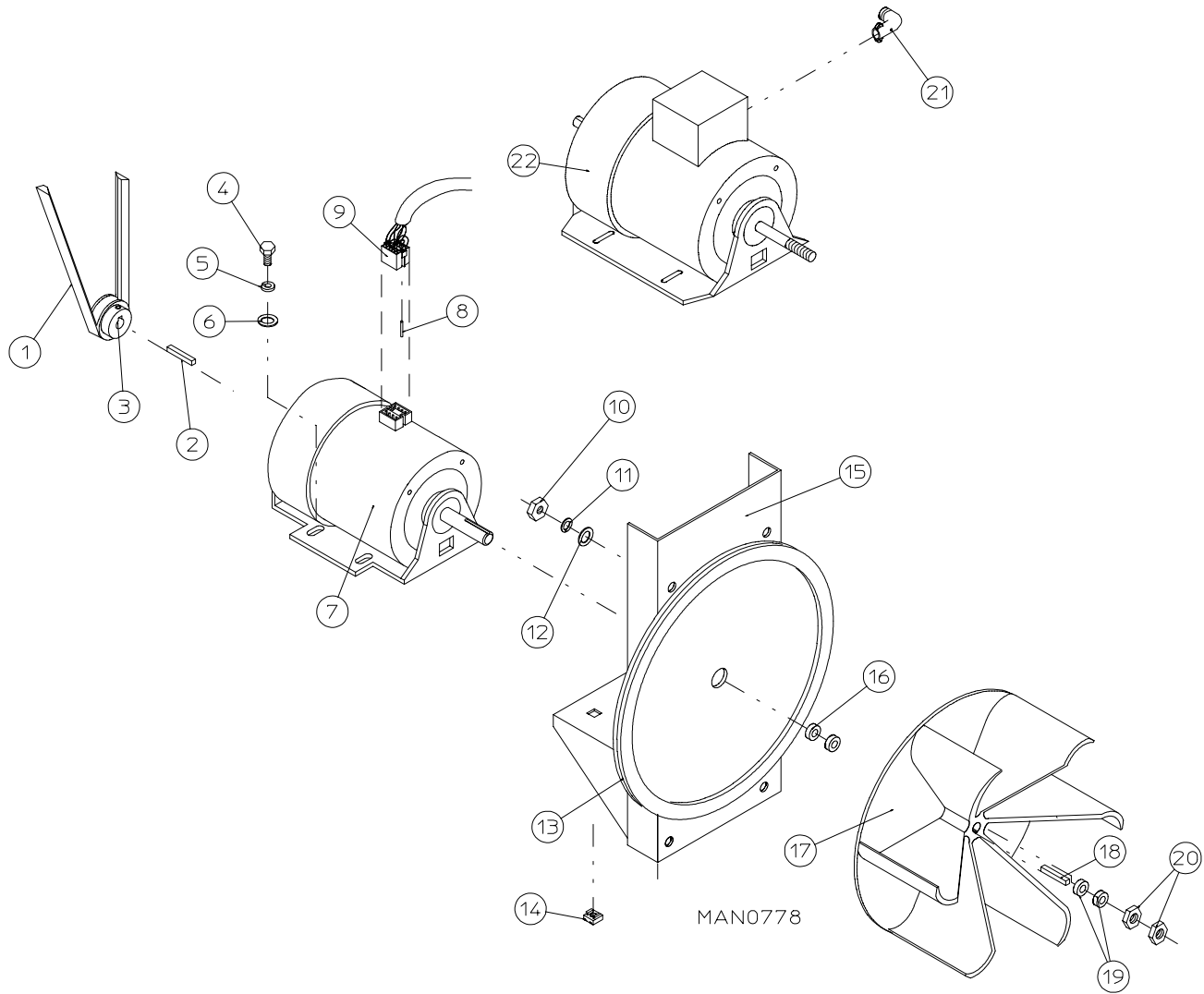
<u>Illus. No.</u>	<u>Part No.</u>	<u>Qty.</u>	<u>Description</u>
1	100108	1	5L680 "V" Belt (idler to basket/tumbler) For AD-15 50/60 Hz For AD-25 60 Hz ONLY
	100107	1	5L670 "V" Belt (basket/tumbler to idler) For AD-25 50 Hz ONLY
2	101129	1	9" x 2-1/2" Compound Pulley
3	100110	1	4L500 "V" Belt (idler to motor) For AD-15 50/60 Hz For AD-25 60 Hz ONLY
	100103	1	4L510 "V" Belt (idler to motor) For AD-25 50 Hz ONLY
4	154301	2	#5/16-18 x 1" Allen Set Screw
5	100705	1	3/16" x 3/16" x 1-3/8" Key
6	301850	1	5/8" x 3/4" Idler Shaft
7	150529	3	#1/4-20 x 2-1/4" Carriage Bolt
8	100214	2	5/8" Flange Bearing
9	153007	3	1/4" Lock Washer
10	152002	3	#1/4-20 Hex Nut
11	801007	1	Idler Bearing Assembly Complete (includes illus. nos. 6 through 17)
12	150617	2	#3/8-16 x 1" Hex Head Machine Bolt
13	153005	2	3/8" Lock Washer
14	153004	2	3/8" Flat Washer
15	801009	1	Idler Square Washer
16	152004	1	#5/16-18 Hex Nut
17	150509	1	#5/16-18 x 3" Hex Head Machine Bolt



Illus. No.	Part No.	Qty.	Description
1	100110	1	4L500 "V" Belt (to idler assembly)
2	100701	1	3/16" x 3/16" x 1" Key (for use on 3Ø models ONLY)
3	101104	1	1/2" x 2" Motor Pulley (for use on 1Ø - 60 Hz Motors ONLY)
	101132	1	5/8" x 2" Motor Pulley (for use on 3Ø - 60 Hz Motors ONLY)
	101133	1	5/8" x 2-1/4" Motor Pulley (for use on 1Ø/3Ø - 50 Hz Motors ONLY)
4	150501	4	5/16-18 x 3/4" Hex Head Machine Bolt
	153002	4	5/16" Lock Washer
	153001	4	5/16" Flat Washer
7	100065*	1	1/2HP 100-230v 50/60 Hz 1Ø T.E.F.C. Plug-Type Motor
	100066	1	1/2HP 240v 50 Hz 1Ø T.E.F.C. Plug-Type Motor (for models mfd. as of August 28, 1992)

<u>Illus. No.</u>	<u>Part No.</u>	<u>Qty.</u>	<u>Description</u>
8	122701	8	Socket Terminal ONLY
	122801	1	Pin/Socket Extraction Tool
9	137030	1	8-Pin Housing Connector
10	152004	4	5/16-18 Hex Nut
11	153002	4	5/16" Lock Washer
12	153001	4	5/16" Flat Washer
13	117600	4	Noise Suppressor Tape (sold in feet)
14	154000	4	5/16-18 Tinnerman Nut
15	800908	1	1/2HP Motor Mount ONLY (56Z Frame)
	803930*	1	1/2HP 115-230v 50/60Hz 1Ø T.E.F.C. Motor Mount Assembly Complete with Plug Motor (includes illus. nos. 3 through 7 and 13 through 20)
	880819	1	1/2HP 240v 50Hz 1Ø T.E.F.C. Motor Mount Assembly Complete with Plug Motor (includes illus. nos. 3 through 6 and 13 through 22) For models mfd. as of August 28, 1992
	803801*	1	1/2HP 208/230/380/460v 60Hz 3Ø T.E.F.C. Motor Mount Assembly Complete (includes illus. nos. 2 through 7 and 13 through 20)
	803800*	1	1/2HP 208/230/380/460v 50Hz 3Ø T.E.F.C. Motor Mount Assembly Complete (includes illus. nos. 2 through 6 and 13 through 22)
	803707	1	1/2HP 240v 50Hz 1Ø T.E.F.C. Motor Mount Assembly Complete (includes illus. nos. 3 through 6 and 13 through 22) For models mfd. prior to August 28, 1992
16	153050	2	1/2" S.A.E. Flat Washer
17	100604	1	12-1/2" Impellor with 1/2" Bore
18	100702	1	1/8" x 1/8" x 1-1/2" Key
19	153050	2	1/2" S.A.E. Flat Washer
20	152006	2	1/2-20 Left Hand Jam Nut
21	120200	1	3/8" 90° Connector
22	100007*	1	1/2HP 208/230/380/460v 50/60Hz 3Ø T.E.F.C. Motor (56Z Frame)
	100035	1	1/2HP 240v 50Hz 1Ø T.E.F.C. Motor (56Z Frame) For models mfd. prior to August 28, 1992

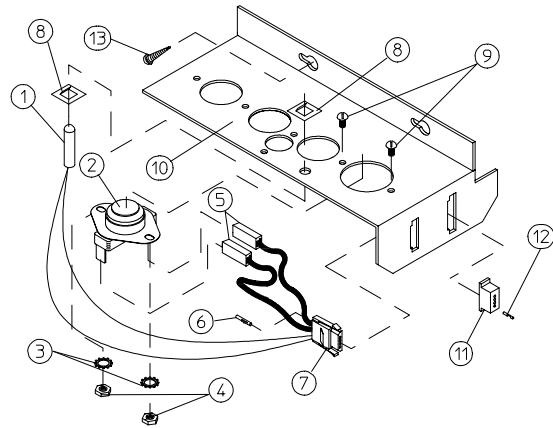
* Specify voltage when ordering.



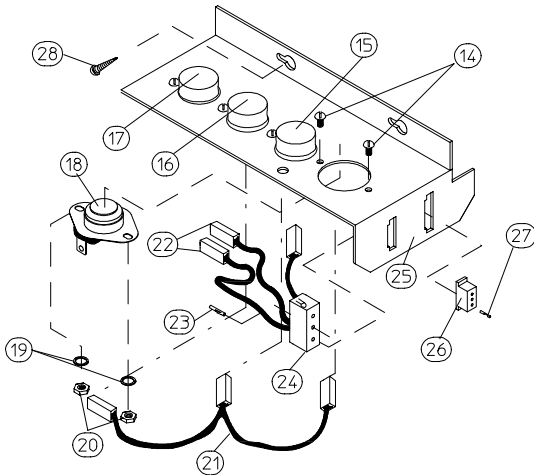
<u>Illus. No.</u>	<u>Part No.</u>	<u>Qty.</u>	<u>Description</u>
1	100110	1	4L500 "V" Belt (to idler assembly)
2	100701	1	3/16" x 3/16" x 1" Key (for use on 3Ø models ONLY)
3	101102	1	1/2" x 1-3/4" Motor Pulley (for use on 1Ø - 60 Hz Motors ONLY)
	101103	1	5/8" x 1-3/4" Motor Pulley (for use on 3Ø - 60 Hz Motors ONLY)
	101132	1	5/8" x 2" Motor Pulley (for use on 1Ø/3Ø - 50 Hz Motors ONLY)
4	150501	4	5/16-18 x 3/4" Hex Head Machine Bolt
5	153002	4	5/16" Lock Washer
6	153001	4	5/16" Flat Washer
7	100065*	1	1/2HP 100-230v 50/60 Hz 1Ø T.E.F.C. Plug-Type Motor
	100066	1	1/2HP 240v 50 Hz 1Ø T.E.F.C. Plug-Type Motor (for models mfd. as of August 28, 1992)

<u>Illus. No.</u>	<u>Part No.</u>	<u>Qty.</u>	<u>Description</u>
8	122701	8	Socket Terminal ONLY
	122801	1	Pin/Socket Extraction Tool
9	137030	1	8-Pin Housing Connector
10	152004	4	5/16-18 Hex Nut
11	153002	4	5/16" Lock Washer
12	153001	4	5/16" Flat Washer
13	117600	4	Noise Suppressor Tape (sold in feet)
14	154000	4	5/16-18 Tinnerman Nut
15	800910	1	1/2HP Motor Mount ONLY (56Z Frame)
	803935*	1	1/2HP 115-230v 50/60Hz 1Ø T.E.F.C. Motor Mount Assembly Complete with Plug Motor (includes illus. nos. 3 through 7 and 13 through 20)
	880820	1	1/2HP 240v 50Hz 1Ø T.E.F.C. Motor Mount Assembly Complete with Plug Motor (includes illus. nos. 3 through 6 and 13 through 22) For models mfd. as of August 28, 1992
	803807*	1	1/2HP 208/230/380/460v 60Hz 3Ø T.E.F.C. Motor Mount Assembly Complete (includes illus. nos. 2 through 7 and 13 through 20)
	803806*	1	1/2HP 208/230/380/460v 50Hz 3Ø T.E.F.C. Motor Mount Assembly Complete (includes illus. nos. 2 through 6 and 13 through 22)
	803755	1	1/2HP 240v 50Hz 1Ø T.E.F.C. Motor Mount Assembly Complete (includes illus. nos. 3 through 6 and 13 through 22) For models mfd. prior to August 28, 1992
16	153050	2	1/2" S.A.E. Flat Washer
17	100604	1	12-1/2" Impellor with 1/2" Bore
18	100702	1	1/8" x 1/8" x 1-1/2" Key
19	153050	2	1/2" S.A.E. Flat Washer
20	152006	2	1/2-20 Left Hand Jam Nut
21	120200	1	3/8" 90° Connector
22	100007*	1	1/2HP 208/230/380/460v 50/60Hz 3Ø T.E.F.C. Motor (56Z Frame)
	100035	1	1/2HP 240v 50Hz 1Ø T.E.F.C. Motor (56Z Frame) For models mfd. prior to August 28, 1992

* Specify voltage when ordering.



MICROPROCESSOR SENSOR BRACKET ASSEMBLY



NON-COMPUTER SENSOR BRACKET ASSEMBLY

MAN0238

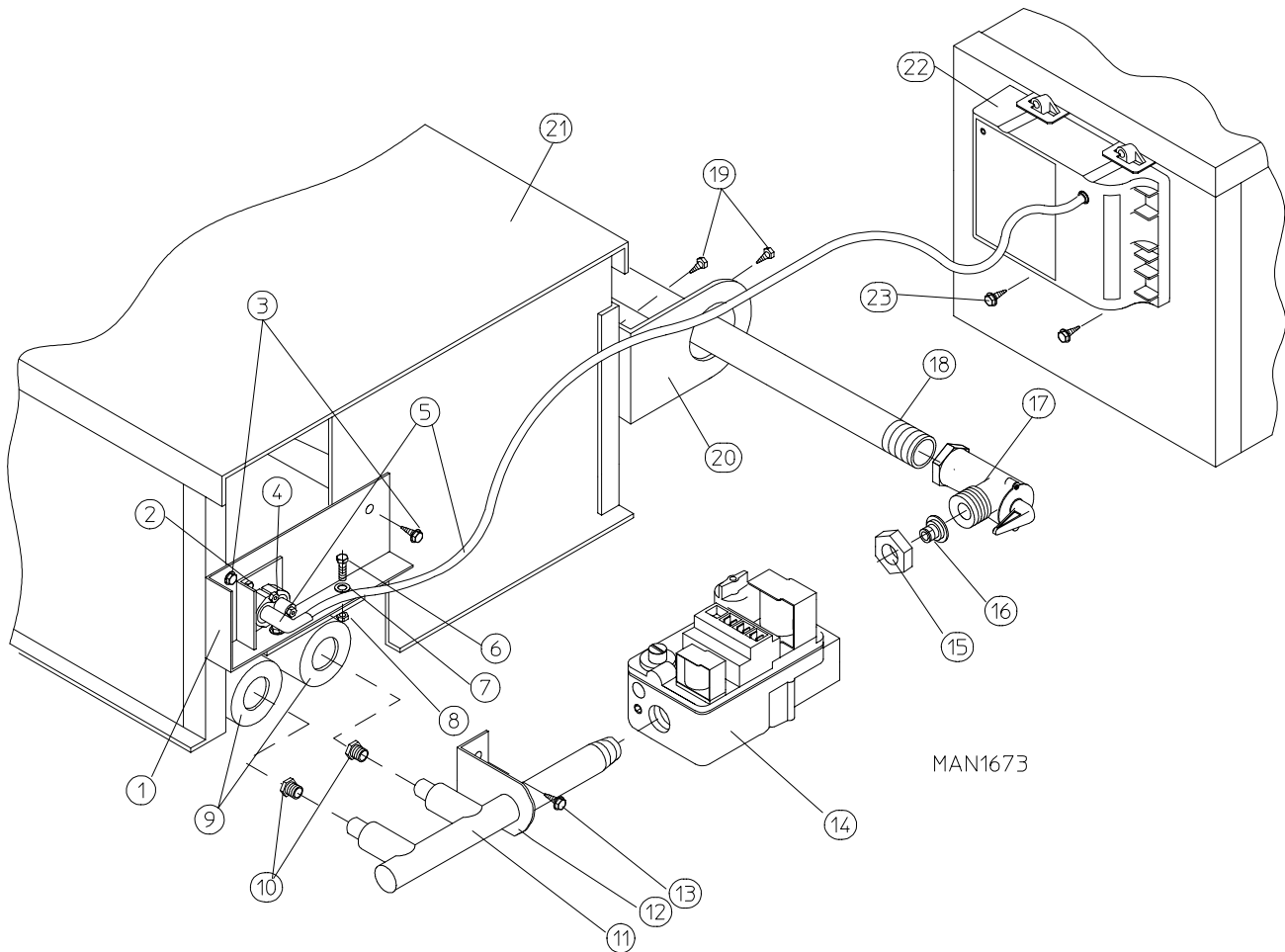
<u>Illus. No.</u>	<u>Part No.</u>	<u>Qty.</u>	<u>Description</u>
1	880251	1	1/4" Temperature Sensor Probe Assembly (includes illus. nos. 1 and 5 through 8)
2	130103	1	225° Large Automatic Reset Thermostat
3	153010	2	#6 Star Washer
4	152000	2	#6-32 Hex Nut
5	121028	2	Insulated Terminal ONLY
6	122701	4	Socket Terminal ONLY
7	122605	1	4-Pin Socket Connector ONLY
8	154007	2	1/4" Tinnerman Push-on Fastener
9	150005	2	#6-32 x 1/4" Round Head Machine Screw
10	801425	1	Microprocessor Sensor Bracket Assembly Complete (includes illus. nos. 1 through 10)
	305007	1	Universal Sensor Bracket ONLY
11	122604	1	4-Pin Connector ONLY
12	122700	4	Pin Terminal ONLY
13	150301	2	#8-18 x 7/16" Phillips Pan-Head TEK Screw
14	150000	*	#6-32 x 1/4" Slotted Round Head Machine Screw
15	130111	1	130° Large Thermostat (for ADC models mfd. as of August 1, 1993)
	130100	1	150° Large Thermostat (for ADC models mfd. prior to August 1, 1993)
	130109	1	140° Large Thermostat (for UniDryer® models ONLY)

<u>Illus. No.</u>	<u>Part No.</u>	<u>Qty.</u>	<u>Description</u>
16	130100	1	150° Large Thermostat (for ADC models mfd. as of August 1, 1993)
	130103	1	225° Large Automatic Reset Thermostat (for ADC models mfd. prior to August 1, 1993)
	130107	1	160° Large Thermostat (for UniDryer® models ONLY)
17	130103	1	225° Large Automatic Reset Thermostat (for ALL UniDryer® models and ADC models mfd. as of August 1, 1993)
18	130101	1	180° Large Thermostat
19	153010	*	#6 Star Washer
20	152000	*	#6-32 Hex Nut
21	840065	1	Sensor Jumper (4) ONLY (for ALL UniDryer® models and ADC models mfd. as of August 1, 1993)
	840063	1	Sensor Jumper (3) ONLY (for ADC models mfd. prior to August 1, 1993)
22	121028	*	Insulated Terminal ONLY
23	122701	*	Socket Terminal ONLY
24	122605	1	4-Pin Socket Connector ONLY (for ALL UniDryer® models and ADC models mfd. as of August 1, 1993)
	122609	1	3-Pin Socket Connector ONLY (for ADC models mfd. prior to August 1, 1993)
	831702	1	Sensor (3) Bracket Harness Assembly (includes illus. nos. 22, 23, and 24) (for ADC models mfd. prior to August 1, 1993)
	840062	1	Sensor (4) Bracket Harness Assembly (includes illus. nos. 22, 23, and 24) (for ALL UniDryer® models and ADC models mfd. as of August 1, 1993)
25	801405	1	Non-computer Sensor (3) Bracket Assembly Complete (includes thermostats) (includes illus. nos. 14, 15, 16, and 18 through 25) (for ADC models mfd. prior to August 1, 1993)
	801411	1	Non-computer Sensor (4) Bracket Assembly Complete (includes Thermostats) (includes illus. nos. 14 through 25) (for UniDryer® models)
	801418	1	Non-computer Sensor (4) Bracket Assembly Complete (includes Thermostats) (includes illus. nos. 14 through 25) (for ADC models mfd. as of August 1, 1993)
	305007	1	Universal Sensor Bracket ONLY
26	122604	1	4-Pin Connector ONLY (for ALL UniDryer® models and ADC models mfd. as of August 1, 1993)
	122608	1	3-Pin Connector ONLY (for ADC models mfd. prior to August 1, 1993)
27	122700	***	Pin Terminal ONLY
	122801	1	Pin/Socket Extraction Tool
28	150301	2	#8-18 x 7/16" Phillips Pan Head TEK Screw

* Quantity is 4 or 5.

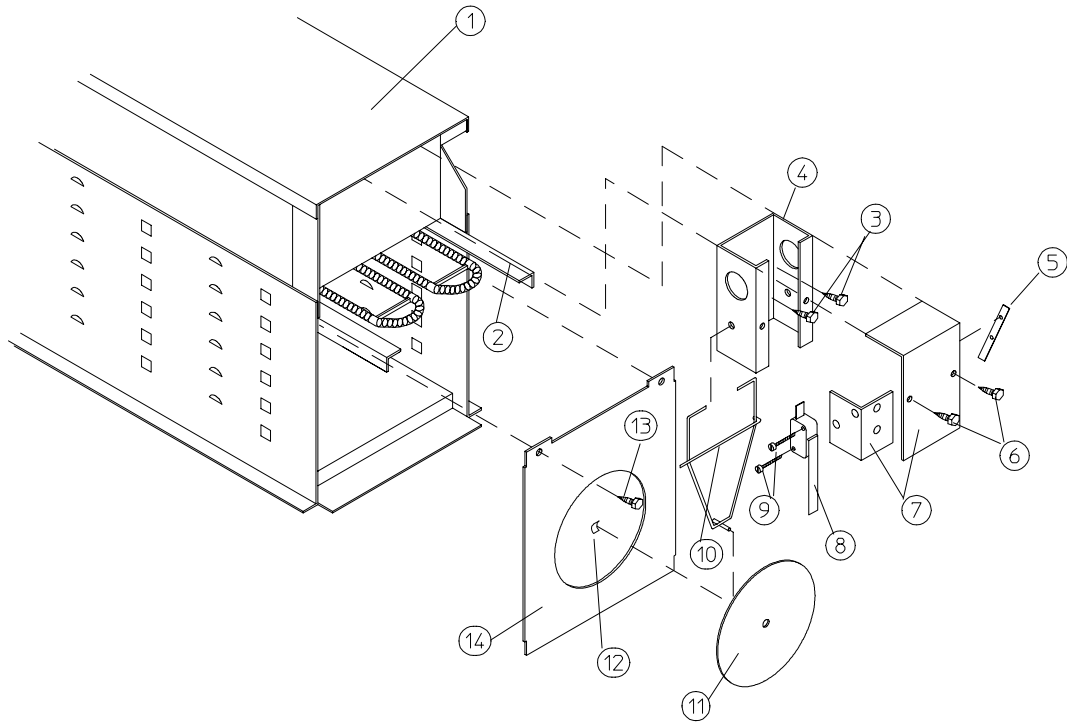
** Quantity is 6 or 8.

*** Quantity is 3 or 4.

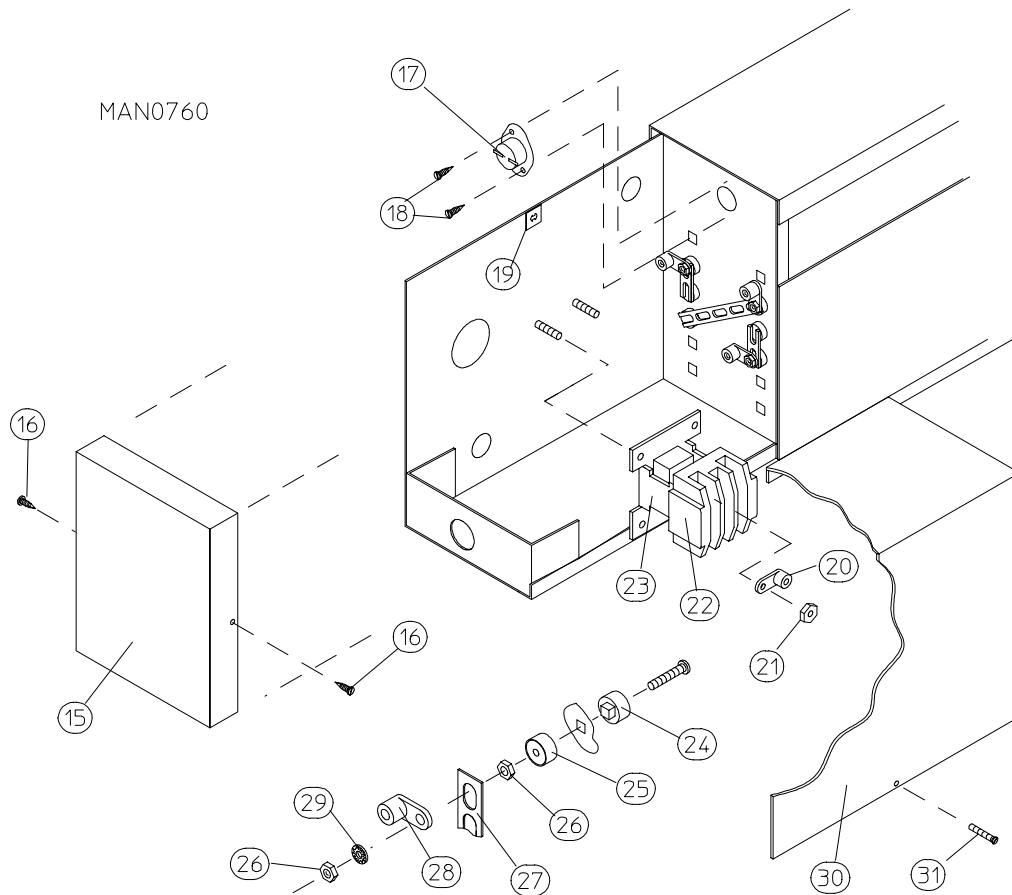


<u>Illus. No.</u>	<u>Part No.</u>	<u>Qty.</u>	<u>Description</u>
1	318030	1	DSI Burner Shield
2	150300	2	#10 x 1/2" Hex Washer TEK Screw
3	150415	2	#10-16 x 1/2" Phillips Round Head Crimptite
4	128915	1	DSI Ignitor/Flame Probe Assembly
	880134	1	Ignitor/Flame Probe Kit Assembly (includes illus. nos. 4 and 5)
5	880330	1	HV Wire and Connector Assembly
6	150103	2	#8-32 x 1/2" Pan Head Machine Screw
7	153000	2	#8 Steel Burr
8	151001	2	#8-32 Pal Nut
9	141104	2	Small Tube Burner ONLY
10	-----	2	Burner Orifice (refer to DSI Burner Orifice Listing on page 59)
11	141230	1	1/2" DSI Manifold (2-Port)
12	318700	1	Pipe Bracket (bent)
13	150300	2	#10 x 1/2" Hex Washer TEK Screw
14	128927	1	1/2" 24 VAC Redundant Gas Valve (natural gas)
	140411	1	1/2" Valve Conversion Kit (liquid propane)
	880960	1	1/2" DSI Gas Valve/L.P. Kit Combination
15	*	1	Tail Piece Collar ONLY (NOT AVAILABLE)
16	*	1	1/2" Union Tail Piece ONLY (NOT AVAILABLE)
17	881367	1	Union Shut-off Body Complete with Tail Piece and Collar (includes illus. nos. 15, 16, and 17)
18	142809	1	1/2" x 29-1/8" Pipe
19	150415	4	#10-16 x 1/2" Phillips Round Head Crimptite Screw
20	318700	2	Pipe Bracket (bent)
21	850851	1	Non-Heat Reclaimer Burner Box ONLY
	850861	1	Heat Reclaimer Burner Box ONLY
	-----	1	Burner Assembly Complete Less Orifices (refer to DSI Burner Assembly Specifications on page 59)
22	880815	1	ADC DSI Module ONLY
23	150299	4	#10 x 1" Hex Washer TEK Screw
---	-----	1	Conversion Kit (refer to DSI L.P. Conversion Kit Listing on page 59)
---	410001	1	1/2" Allen Wrench

* NOT AVAILABLE INDIVIDUALLY ... must be purchased as an assembly.



ELECTRIC OVEN (FRONT VIEW)

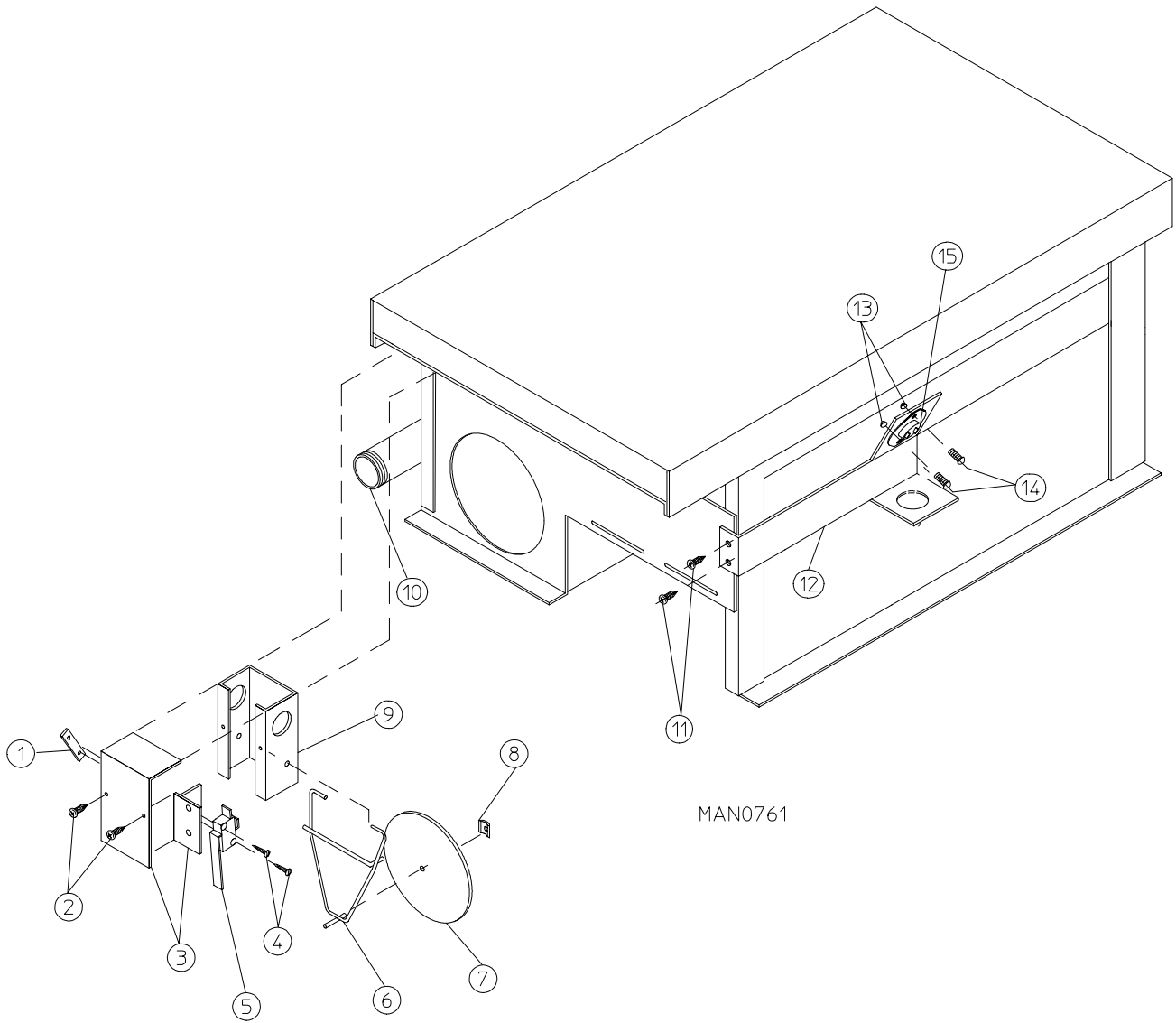


MAN0760

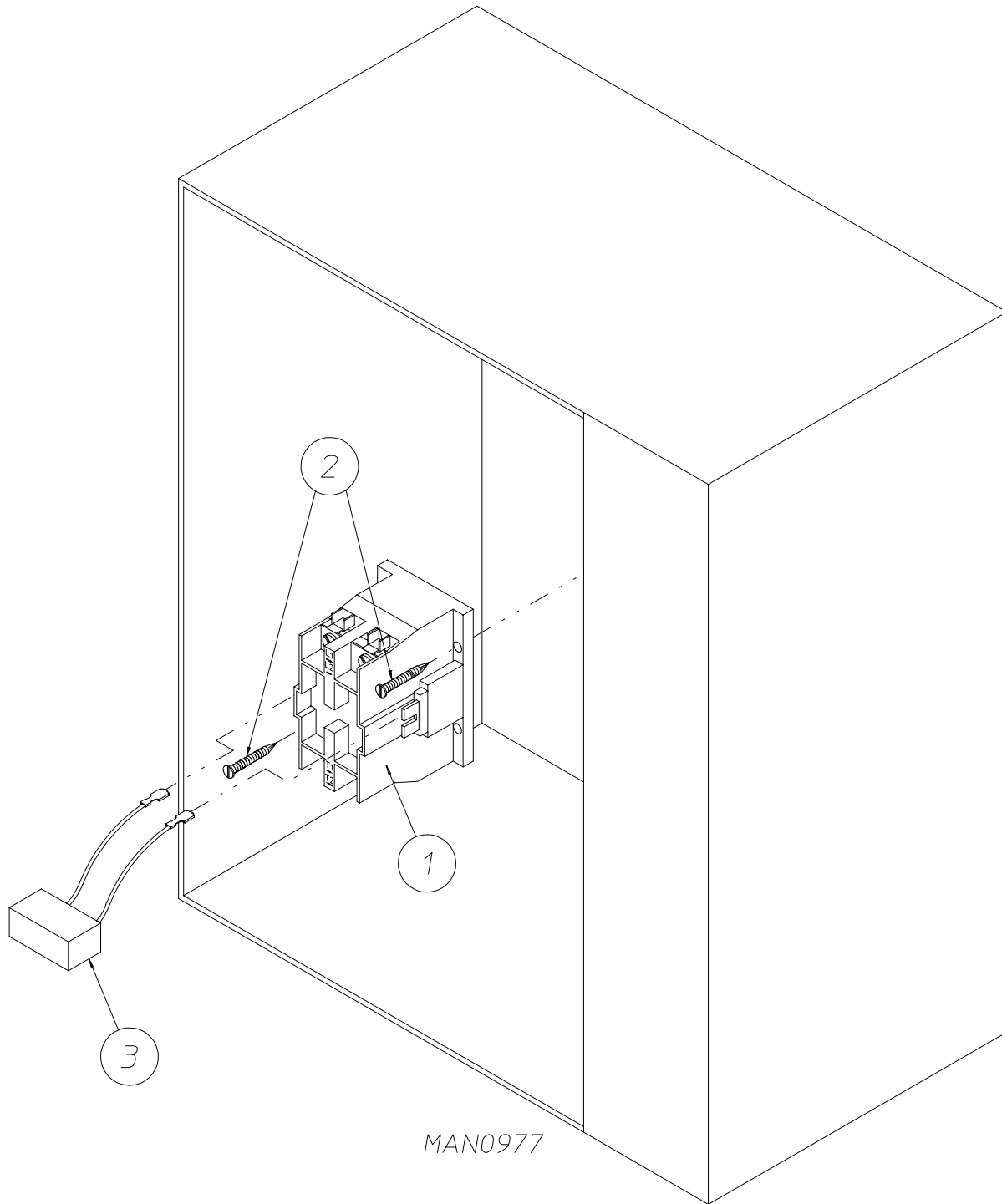
ELECTRIC OVEN (REAR VIEW)

<u>Illus. No.</u>	<u>Part No.</u>	<u>Qty.</u>	<u>Description</u>
1	803003*	1	Small Electric Oven Box ONLY
	-----*	1	Electric Oven Assembly Complete
2	-----*	-	Electric Element
3	150300	2	#10 x 1/2" Hex Washer TEK Screw
4	802800	1	Sail Switch Box with Bracket and Cover ONLY
	802801	1	Sail Switch Box Assembly Complete (includes illus. nos. 4 through 12)
5	154004	1	Twin Speed Nut
6	150415	2	#10-16 x 1/2" Phillips Round Head Crimptite Screw
7	802799	1	Sail Switch Box Cover ONLY
8	122200	1	Sail Switch ONLY
9	150303	2	#4 x 3/4" Pan Head "A" Machine Screw
10	105500	1	Sail Switch Actuator Rod
11	319202	1	Sail Switch Damper (flat)
12	154002	1	1/8" Push-on Fastener
13	150300	2	#10 x 1/2" Hex Washer TEK Screw
14	803100	1	Electric Oven Front Cover ONLY
15	302611	1	Large Relay Box Cover ONLY
16	150402	2	#10-24 x 5/8" Slotted Truss Head Machine Screw
17	130400	1	290° Hi-Limit
18	150300	2	#10 x 1/2" Hex Washer TEK Screw
19	154001	2	#10-24 Speed Nut
20	121010	1	L-70 Ground Lug
21	152014	3	1/4-20 Free Spin Wash Nut
22	-----*	1	Oven Relay
23	-----*	1	Oven Relay Replacement Coil
24	120081	-	Internal Ceramic Insulator (2 per element)
25	120080	-	External Ceramic Insulator (2 per element)
26	152008	-	#10-32 Hex Nut (4 per element)
27	121011*	-	Bus Bar
28	-----*	-	Terminal Lug
29	153009	-	#10 Star Washer (2 per element)
30	320607	1	Large Electric Oven Right Side Cover ONLY
31	150402	2	#10-24 x 5/8" Truss Head Machine Screw

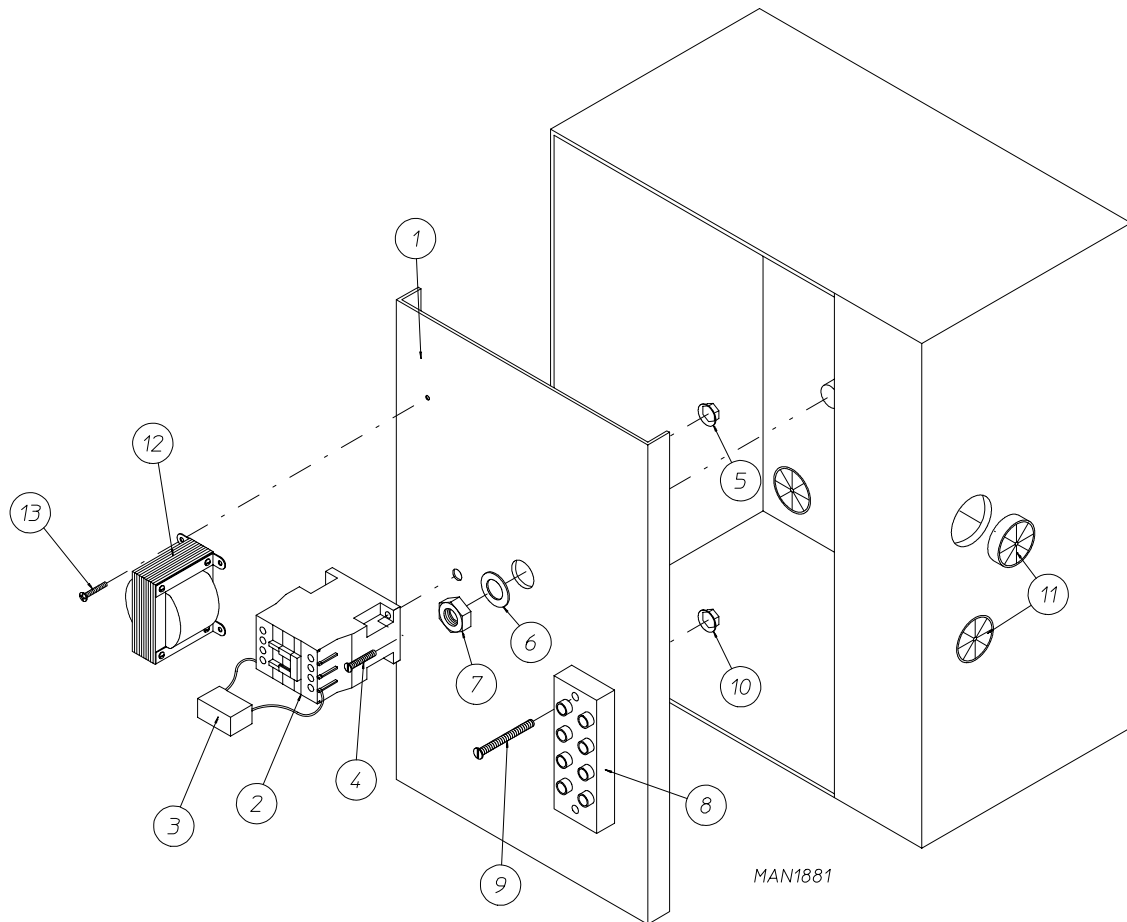
* Refer to **ADE-15/ADE-25 Electric Oven Component Application Chart** on **page 58**.



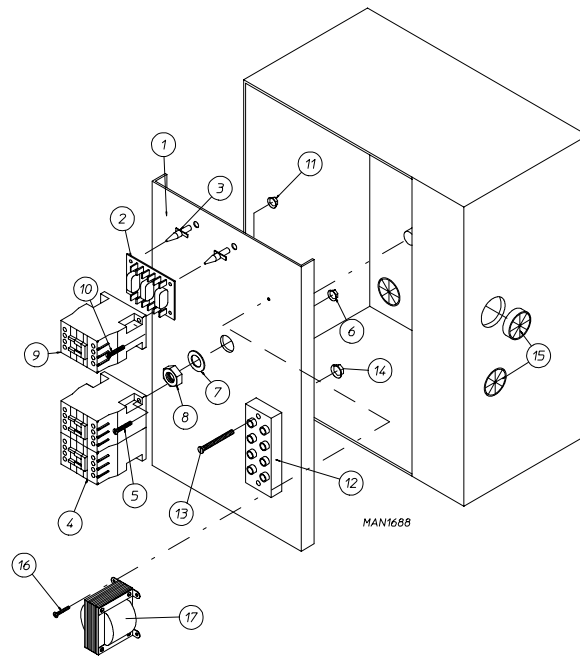
<u>Illus. No.</u>	<u>Part No.</u>	<u>Qty.</u>	<u>Description</u>
1	154004	1	Twin Speed Nut
2	150415	2	#10-16 x 1/2" Phillips Round Head Crimptite Screw
3	802799	1	Sail Switch Box Cover and Bracket ONLY
4	150303	2	#4 x 3/4" Pan Head "A" Machine Screw
5	122200	1	Sail Switch ONLY
6	105500	1	Sail Switch Actuator Rod
7	319202	1	Sail Switch Damper (flat)
8	154002	1	1/8" Push-on Fastener
9	802800	1	Sail Switch Box with Cover and Bracket ONLY
	802801	1	Sail Switch Assembly Complete (includes illus. nos. 1 through 8)
10	142809	1	1/2" x 29-1/8" Pipe
11	150415	2	#10-16 x 1/2" Phillips Round Head Screw
12	319704	1	Hi-Limit Mounting Bracket ONLY
13	151000	2	#6-32 Pal Nut
14	151001	2	#6-32 x 1/2" Round Head Machine Screw
15	130401	1	330° Hi-Limit ONLY



Illus. No.	Part No.	Qty.	Description
1	132451	1	2-Pole Contactor - 24 VAC
2	150299	2	#10 x 1" Hex Head TEK Screw
3	824828	1	RC Network with Connectors (for Microprocessor Models ONLY)
-	322809	1	Back Electrical Box Cover ... Not Illustrated
-	150301	4	#8-18 x 7/16" Phillips Round Head TEK Screw ... Not Illustrated

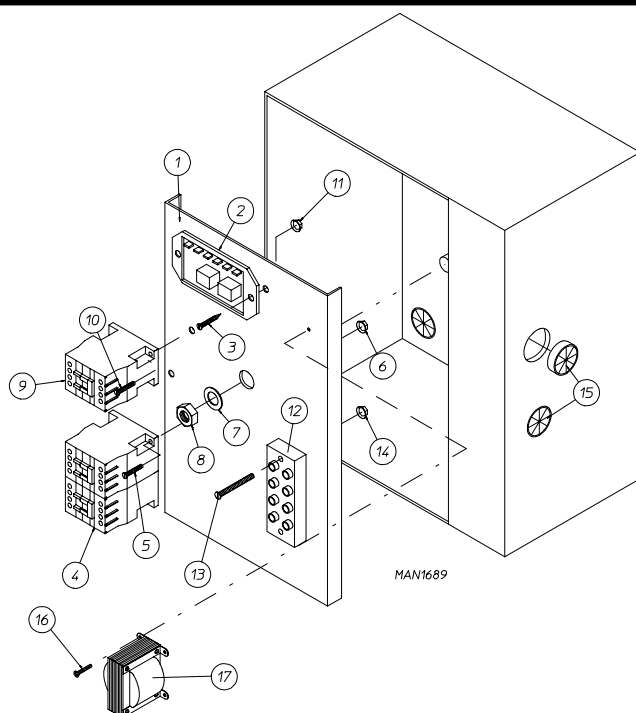


<u>Illus. No.</u>	<u>Part No.</u>	<u>Qty.</u>	<u>Description</u>
1	322812	1	Back Electrical Box Component Mounting Plate
2	132430	1	Impellor Contactor (208/230/240v, 50/60Hz) 24 VAC
	132432	1	Impellor Contactor Replacement Coil (208/230/240v, 50/60Hz) 24 VAC
3	137015	1	RC Filter (for Microprocessor Models ONLY)
4	150103	2	#8-32 x 3/4" Phillips Round Head Machine Screw
5	151001	2	#8-32 Pal Nut
6	153002	1	5/16" Lock Washer
7	152004	1	5/16-18 Hex Nut
8	120701	1	4-Position Terminal Block
9	150008	2	#6-32 x 1-1/4" Slotted Round Head Machine Screw
10	151000	2	#6-32 Pal Nut
11	121300	3	Open/Close Bushing
12	-----	1	24 VAC Transformer (refer to AD-15/AD-25 Step Down Transformer Usage Listing for Gas/Steam Dryers on page 56) (refer to ADE-15/ADE-25 Step Down Transformer Usage Listing for Electric Dryers on page 57)
13	150300	2	#10 X 1/2" Hex Washer TEK Screw
--	322809	1	Back Electrical Box Cover ... Not Illustrated
--	150301	4	#8-18 x 7/16" Phillips Round Head TEK Screw ... Not illustrated



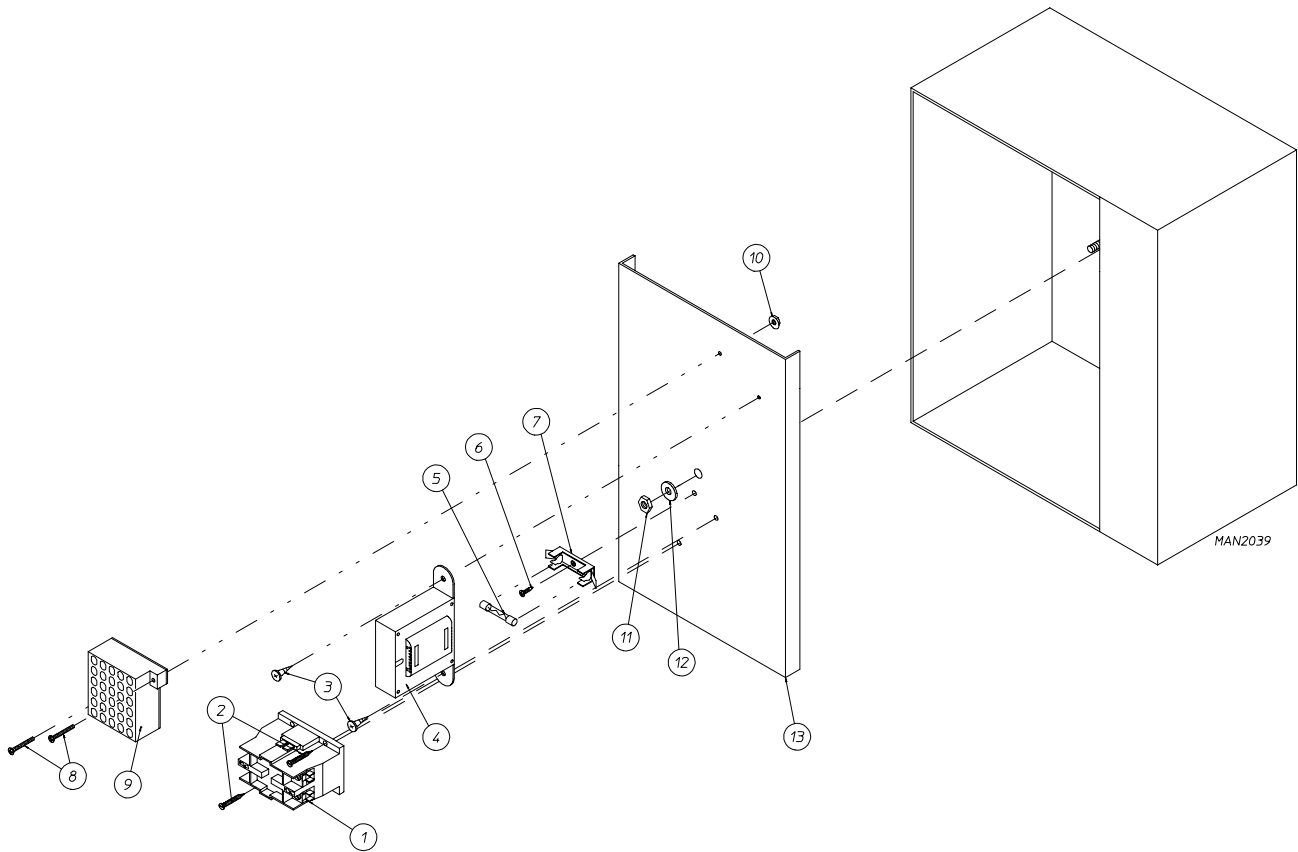
<u>Illus. Nb.</u>	<u>Part No.</u>	<u>Qty.</u>	<u>Description</u>
1	322812	1	Back Electrical Box Component Plate
2	137060	1	Arc Suppressor Board
3	137013	2	Nylon Standoff
4	132431	1	Reversing Contactor (208/230/240v, 50/60Hz) 24 Volt Coil
	132432	1	Reversing Contactor Replacement Coil (208/230/240v, 50/60Hz) 24 Volt Coil
5	150103	2	#8-32 x 3/4" Phillips Round Head Machine Screw
6	151001	2	#8-32 Pal Nut
7	153002	1	5/16" Split Lock Washer
8	152004	1	5/16-18 Hex Nut
9	132430	1	Impellor Contactor (208/230/240v, 50/60Hz) 24 Volt Coil
	132432	1	Impellor Contactor Replacement Coil (208/230/240v, 50/60Hz) 24 Volt Coil
10	150103	2	#8-32 x 3/4" Phillips Round Head Machine Screw
11	151001	2	#8-32 Pal Nut
12	120701	1	4-Position Terminal Block
13	150008	2	#6-32 x 1-1/4" Slotted Round Head Machine Screw
14	151000	2	#6-32 Pal Nut
15	121300	3	Open/Close Bushing
16	150300	2	#10 x 1/2" Hex Washer TEK Screw
17	-----	-	24 VAC Transformer (refer to AD-15/AD-25 Step Down Transformer Usage Listing for Gas/Steam Dryers on page 56) (refer to ADE-15/ADE-25 Step Down Transformer Usage Listing for Electric Dryers on page 57)
--	322809	1	Back Electrical Box Cover ... Not Illustrated
--	150301	4	#8-18 x 7/16" Phillips Pan Head TEK Screw ... Not Illustrated

* As required.



<u>Illus. No.</u>	<u>Part No.</u>	<u>Qty.</u>	<u>Description</u>
1	322812	1	Back Electrical Box Component Plate
2	132198	1	Reversing Timer - 24 VAC (50/60 Hz)
3	150301	2	#8-18 x 7/16" Phillips Round Head TEK Screw
4	132431	1	Reversing Contactor 24 VAC Coil (208/230/240v, 50/60Hz)
	132432	1	Reversing Contactor Replacement Coil - 24 VAC Coil (208/230/240v, 50/60Hz)
5	150103	2	#8-32 x 3/4" Phillips Round Head Machine Screw
6	151001	2	#8-32 Pal Nut
7	153002	1	5/16" Split Lock Washer
8	152004	1	5/16-18 Hex Nut
9	132430	1	1HP Contactor
	132432	1	Impellor Contactor Replacement Coil - 24 VAC Coil (208/230240v 50/60Hz)
10	150103	2	#8-32 x 3/4" Phillips Round Head Machine Screw
11	151001	2	#8-32 Pal Nut
12	120701	1	4-Position Terminal Block
13	150008	2	#6-32 x 1-1/4" Slotted Round Head Machine Screw
14	151000	2	#6-32 Pal Nut
15	121300	3	Open/Close Bushing
16	150300	2	#10 x 1/2" Hex Washer TEK Screw
17	-----	-	24 VAC Transformer (refer to AD-15/AD-25 Step Down Transformer Usage Listing for Gas/Steam Dryers on page 56) (refer to ADE-15/ADE-25 Step Down Transformer Usage Listing for Electric Dryers on page 57)
--	322809	1	Back Electrical Box Cover ... Not Illustrated
--	150301	4	#8-18 x 7/16" Phillips Pan Head TEK Screw ... Not Illustrated

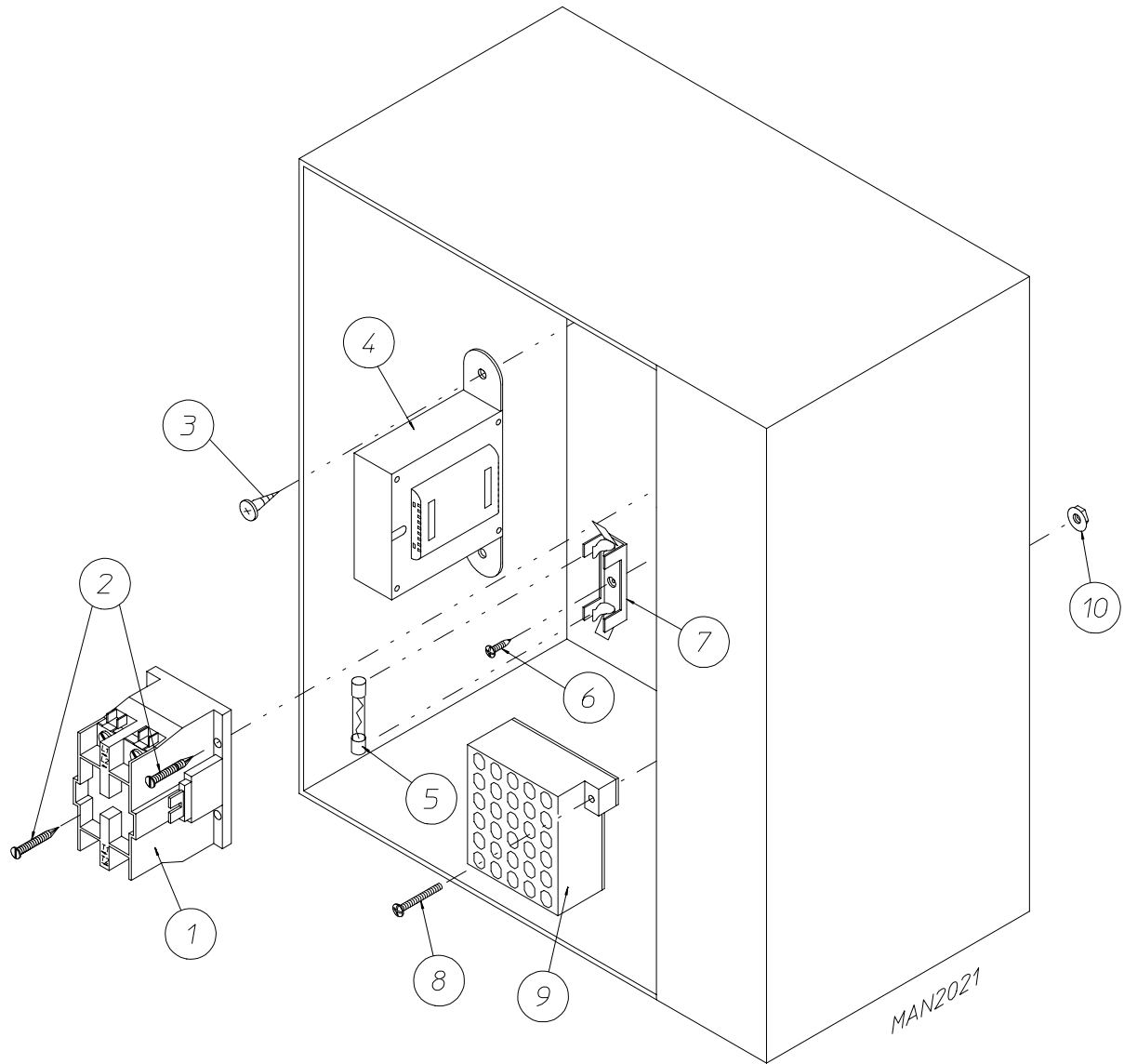
for models mfd. as of January 13, 1995



<u>Illus. No.</u>	<u>Part No.</u>	<u>Qty.</u>	<u>Description</u>
1	132451	1	2-Pole Contactor - 24 VAC
2	150299	2	#10 x 1" Hex Head Screw
3	150300	2	#10 x 1/2" Hex Head Washer TEK Screw
4	-----	-	24 VAC Transformer (refer to AD-15/AD-25 Step Down Transformer Usage Listing for Gas/Steam Dryers on page 56) (refer to ADE-15/ADE-25 Step Down Transformer Usage Listing for Electric Dryers on page 57)
5	136057	*	1/2-Amp (Slo Blo) Fuse ONLY
6	150301	*	#8-18 x 7/16" Phillips Pan Head TEK Screw
7	136008	*	Fuse Block/Strip ONLY
8	150002	2	#6-32 x 1" Round Head Machine Screw
9	120715	1	30-Position Terminal Block ONLY
10	151000	2	#6-32 Pal Nut
11	153002	1	#5/16-18 Lock Washer
12	152004	1	#5/16-18 Hex Nut
13	305520	1	Rear Contactor Plate ONLY
--	322809	1	Back Electrical Box Cover ... Not Illustrated
--	150301	4	#8-18 x 7/16" Phillips Pan Head TEK Screw ... Not Illustrated

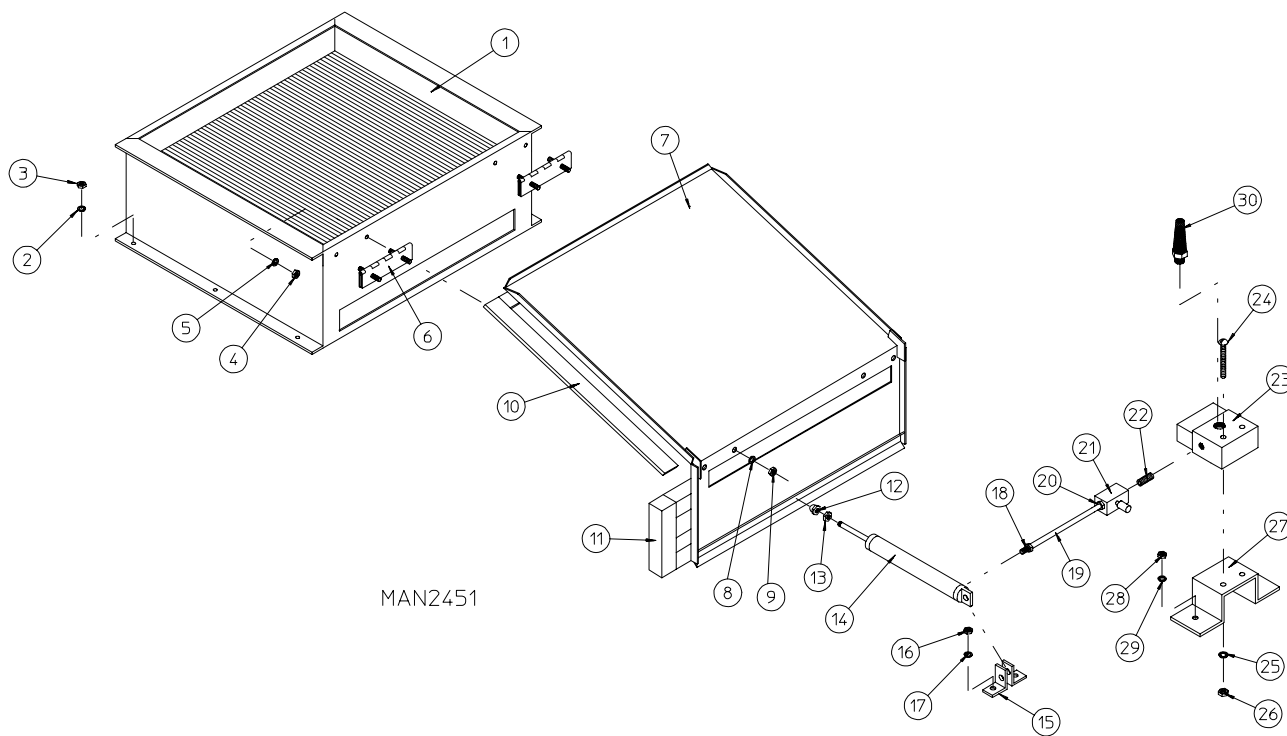
* As required.

for models mfd. prior to January 13, 1995

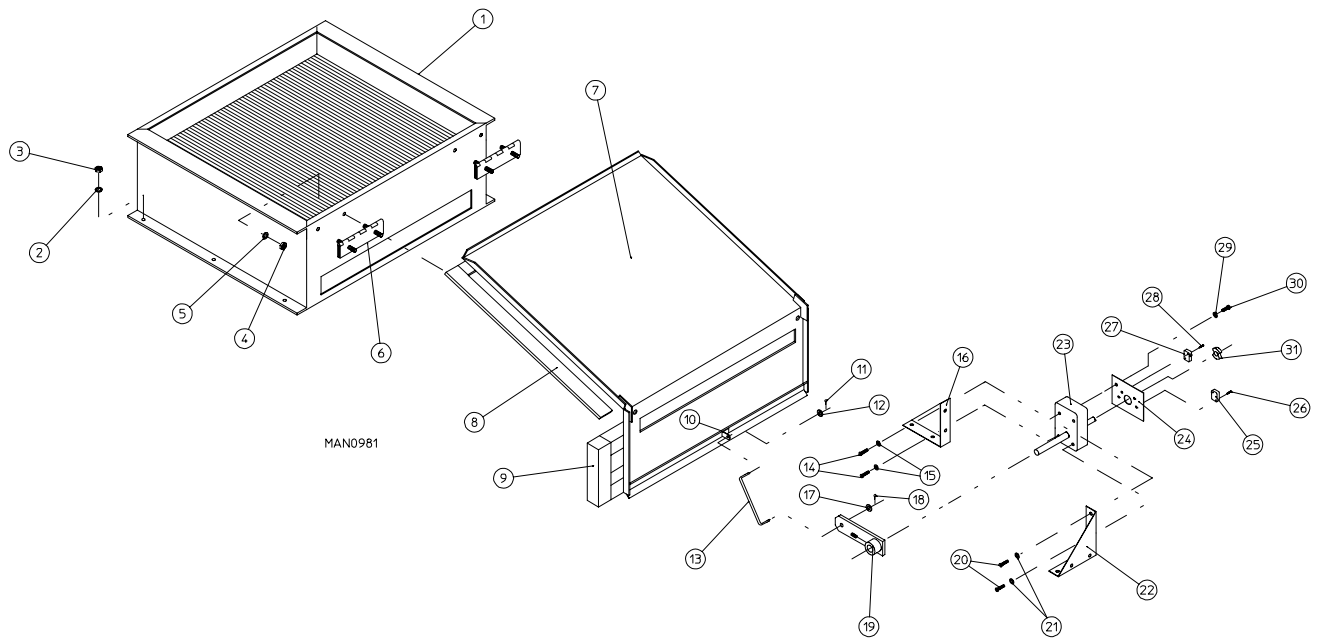


<u>Illus. No.</u>	<u>Part No.</u>	<u>Qty.</u>	<u>Description</u>
1	132451	1	2-Pole Contactor - 24 VAC
2	150299	2	#10 x 1" Hex Head Screw
3	150300	2	#10 x 1/2" Hex Head Washer TEK Screw
4	141403	1	24 VAC Transformer ONLY
5	136057	*	1/2-Amp (Slo Blo) Fuse ONLY
6	150301	*	#8-18 x 7/16" Phillips Pan Head TEK Screw
7	136008	*	Fuse Block/Strip ONLY
8	150002	2	#6-32 x 1" Round Head Machine Screw
9	120715	1	30-Position Terminal Block ONLY
10	151000	2	#6-32 Pal Nut
--	322809	1	Back Electrical Box Cover ... Not Illustrated
--	150301	4	#8-18 x 7/16" Phillips Pan Head TEK Screw ... Not Illustrated

* As required.

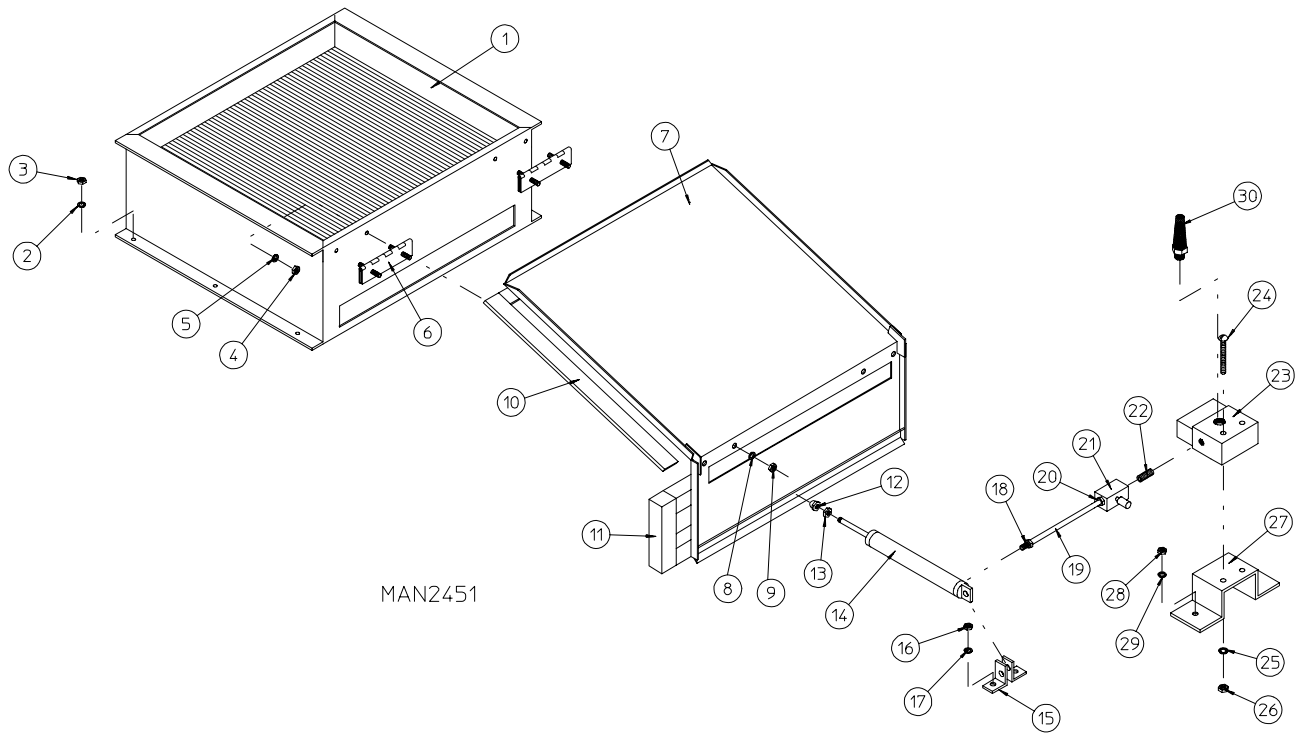


<u>Illus. No.</u>	<u>Part No.</u>	<u>Qty.</u>	<u>Description</u>
1	165013	1	AD-15 Steam Coil Assembly
2	153002	6	5/16" Lock Washer
3	152004	6	5/16-18 Hex Nut
4	152002	4	1/4-20 Hex Nut
5	153007	4	1/4" Lock Washer
6	820321	2	Steam Damper Hinge Assembly
7	803834	1	AD-15 Steam Damper Assembly (includes illus. nos. 7, 10, and 11)
8	153007	4	1/4" Lock Washer
9	152002	4	1/4-20 Hex Nut
10	115995	48	Steam Damper Gasket (sold by the inch)
11	102350	1	Steam Damper Foam (68-1/2" length)
12	151006	1	#5/16-24 Stainless Steel Acorn Nut
13	152051	1	#5/16-24 Right Hand Jam Nut
14	100495	1	11/16" Dia. x 3" Stroke Piston
15	323365	2	Left and Right Piston Support
16	152002	2	#1/4-20 Hex Nut
17	153007	2	1/4" Lock Washer
18	100472	1	1/4" Poly x 1/8" MPT Connector
19	143110	1	1/4" Poly Flow Tubing
20	100472	1	1/4" Poly x 1/8" MPT Connector
21	100496	1	1/8" Needle Valve
22	143238	1	1/8" Brass Close Nipple
23	100498	1	3-Way Micro Valve - 24 VAC
24	150002	2	#6-32 x 1" Machine Bolt
25	153010	2	#6 Star Washer
26	152000	2	#6-32 Hex Nut
27	330987	1	Micro Valve Support
28	152002	2	1/4-20 Hex Nut
29	153007	2	1/4" Lock Washer
30	100520	1	1/8" NPT Silencer (muffler) #N-25

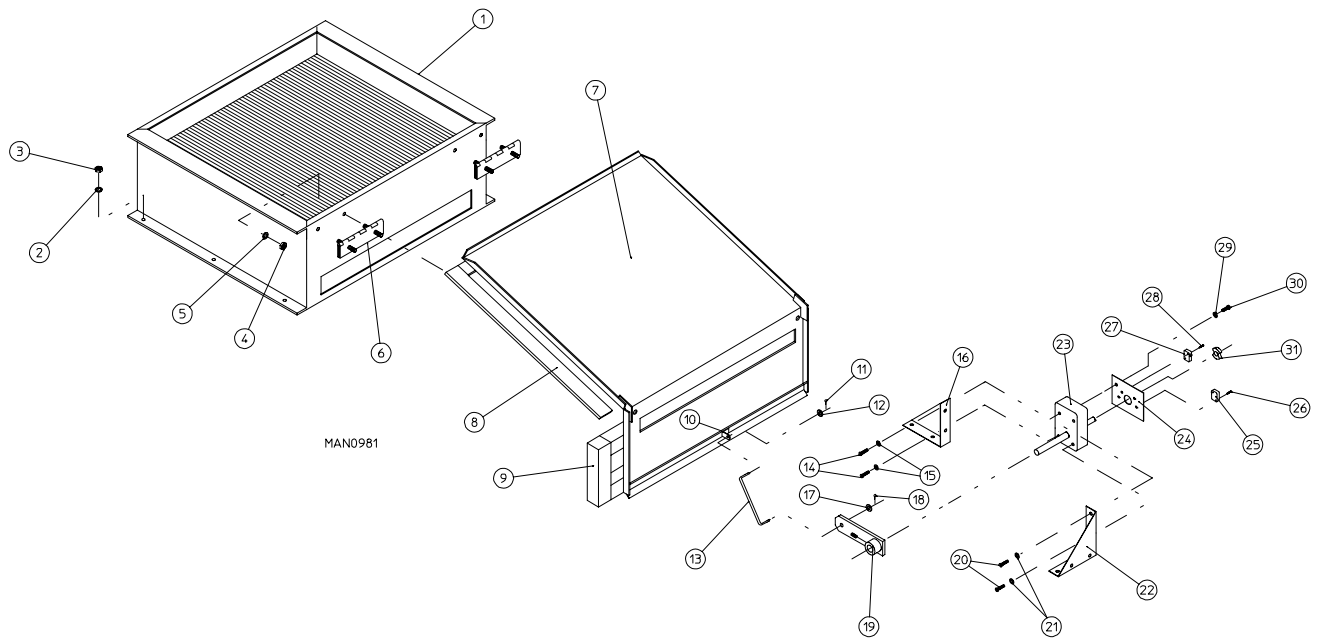


<u>Illus. No.</u>	<u>Part No.</u>	<u>Qty.</u>	<u>Description</u>
1	165013	1	AD-15 Steam Coil Assembly ONLY
2	153002	6	5/16" Lock Washer
3	152004	6	5/16-18 Hex Nut
4	152002	4	1/4-20 Hex Nut
5	153007	4	1/4" Lock Washer
6	820321	2	Steam Damper Hinge Assembly
7	880835	1	AD-15 Steam Damper Assembly (includes illus. nos. 7, 10, and 11)
8	115995	48	Steam Damper Gasket (sold by the inch)
9	102350	1	68-1/2" Long Steam Damper Foam
10	309300	1	Rod Bracket
11	154300	1	1/2" x 3/32" Cotter Pin
12	153002	1	#10 Steel Burr
13	104052	1	Mechanical Steam Damper Actuator Rod
14	150110	2	#8-32 x 1/4" Phillips Head Machine Screw
15	153012	2	#8 Star Washer
16	312315	1	Mechanical Steam Damper Motor Mount
17	153022	1	#10 Steel Burr
18	154300	1	1/2" x 3/32" Cotter Pin
19	850268	1	Mechanical Steam Damper Arm
20	150110	2	#8-32 x 1/4" Phillips Head Machine Screw
21	153012	2	#8 Star Washer
22	312315	1	Mechanical Steam Damper Motor Mount
23	104054	1	Mechanical Steam Damper Motor
24	100511	1	Mechanical Steam Damper Swtch Plate
25	122120	1	Mechanical Steam Damper Switch
26	150026	2	#4-40 x 5/8" Phillips Pan Head Machine Screw
27	122120	1	Mechanical Steam Damper Switch
28	150026	2	#4-40 x 5/8" Phillips Pan Head Machine Screw
29	153012	2	#8 Star Washer
30	150102	2	#8-32 x 3/8" Pan Head Machine Screw
31	-----*	1	Mechanical Steam Damper Motor Cam

* The Mechanical Steam Damper Motor Cam is part of the Mechanical Steam Damper Motor.

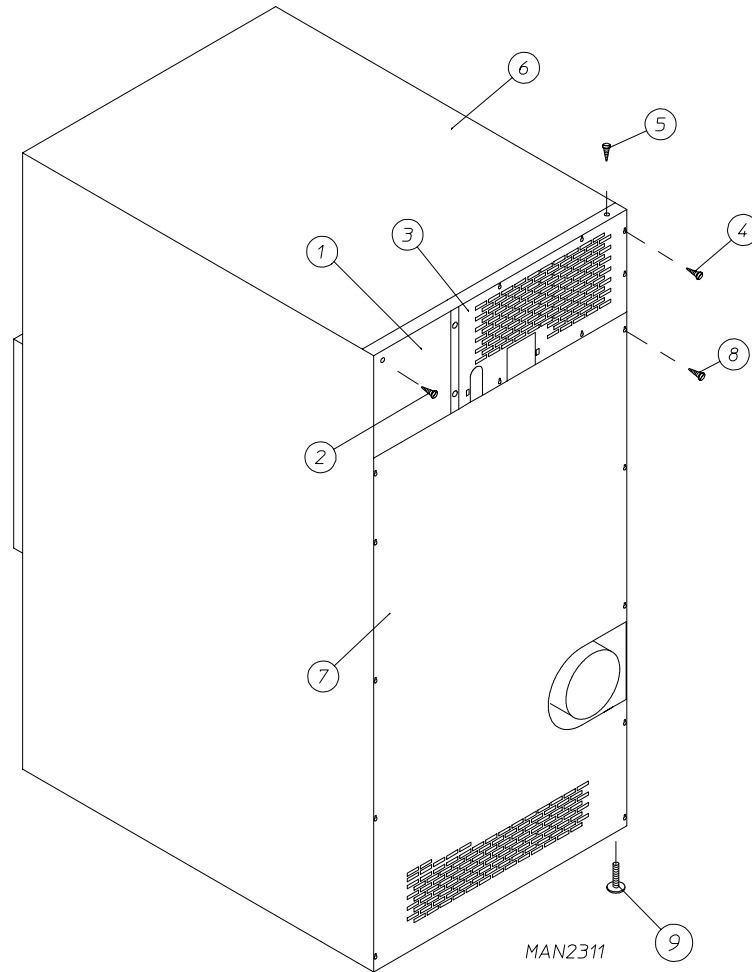


<u>Illus. No.</u>	<u>Part No.</u>	<u>Qty.</u>	<u>Description</u>
1	165013	1	AD-25 Steam Coil Assembly
2	153002	6	5/16" Lock Washer
3	152004	6	5/16-18 Hex Nut
4	152002	4	1/4-20 Hex Nut
5	153007	4	1/4" Lock Washer
6	820321	2	Steam Damper Hinge Assembly
7	803834	1	AD-25 Steam Damper Assembly (includes illus. nos. 7, 10, and 11)
8	153007	4	1/4" Lock Washer
9	152002	4	1/4-20 Hex Nut
10	115995	48	Steam Damper Gasket (sold by the inch)
11	102350	1	Steam Damper Foam (68-1/2" length)
12	151006	1	#5/16-24 Stainless Steel Acorn Nut
13	152051	1	#5/16-24 Right Hand Jam Nut
14	100495	1	11/16" Dia. x 3" Stroke Piston
15	323365	2	Left and Right Piston Support
16	152002	2	#1/4-20 Hex Nut
17	153007	2	1/4" Lock Washer
18	100472	1	1/4" Poly x 1/8" MPT Connector
19	143110	1	1/4" Poly Flow Tubing
20	100472	1	1/4" Poly x 1/8" MPT Connector
21	100496	1	1/8" Needle Valve
22	143238	1	1/8" Brass Close Nipple
23	100498	1	3-Way Micro Valve - 24 VAC
24	150002	2	#6-32 x 1" Machine Bolt
25	153010	2	#6 Star Washer
26	152000	2	#6-32 Hex Nut
27	330987	1	Micro Valve Support
28	152002	2	1/4-20 Hex Nut
29	153007	2	1/4" Lock Washer
30	100520	1	1/8" NPT Silencer (muffler) #N-25



<u>Illus. No.</u>	<u>Part No.</u>	<u>Qty.</u>	<u>Description</u>
1	165013	1	AD-25 Steam Coil Assembly ONLY
2	153002	6	5/16" Lock Washer
3	152004	6	5/16-18 Hex Nut
4	152002	4	1/4-20 Hex Nut
5	153007	4	1/4" Lock Washer
6	820321	2	Steam Damper Hinge Assembly
7	880835	1	AD-25 Steam Damper Assembly (includes illus. nos. 7, 10)
8	115995	48	Steam Damper Gasket (sold by the inch)
9	102350	1	68-1/2" Long Steam Damper Foam
10	309300	1	Rod Bracket
11	154300	1	1/2" x 3/32" Cotter Pin
12	153002	1	#10 Steel Burr
13	104052	1	Mechanical Steam Damper Actuator Rod
14	150110	2	#8-32 x 1/4" Phillips Head Machine Screw
15	153012	2	#8 Star Washer
16	312315	1	Mechanical Steam Damper Motor Mount
17	153022	1	#10 Steel Burr
18	154300	1	1/2" x 3/32" Cotter Pin
19	850268	1	Mechanical Steam Damper Arm
20	150110	2	#8-32 x 1/4" Phillips Head Machine Screw
21	153012	2	#8 Star Washer
22	312315	1	Mechanical Steam Damper Motor Mount
23	104054	1	Mechanical Steam Damper Motor
24	100511	1	Mechanical Steam Damper Swtch Plate
25	122120	1	Mechanical Steam Damper Switch
26	150026	2	#4-40 x 5/8" Phillips Pan Head Machine Screw
27	122120	1	Mechanical Steam Damper Switch
28	150026	2	#4-40 x 5/8" Phillips Pan Head Machine Screw
29	153012	2	#8 Star Washer
30	150102	2	#8-32 x 3/8" Pan Head Machine Screw
31	-----*	1	Mechanical Steam Damper Motor Cam

* The Mechanical Steam Damper Motor Cam is part of the Mechanical Steam Damper Motor.

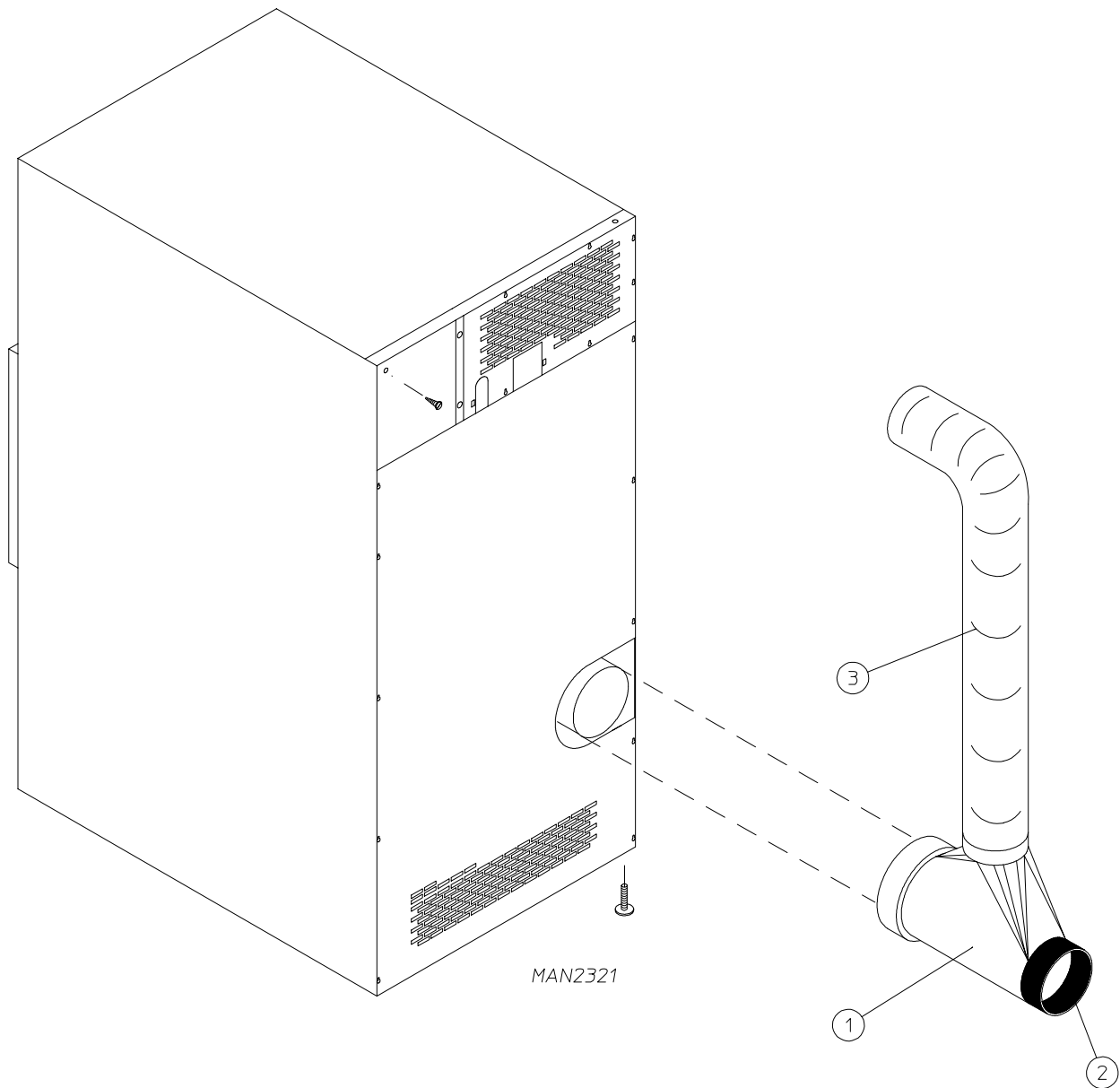


<u>Illus. No.</u>	<u>Part No.</u>	<u>Qty.</u>	<u>Description</u>
1	322809	1	Back Electrical Box Cover
2	150301	4	#8-18 x 7/16" Phillips Pan Head TEK Screw
3*	330076	1	AD-15 Top Back Guard
	330075	1	AD-25 Top Back Guard
4	150301	7	#8-18 x 7/16" Phillips Pan Head TEK Screw
5	150301	10	#8-18 x 7/16" Phillips Pan Head TEK Screw
6**	312532	1	AD-15 Outer Top
	312531	1	AD-25 Outer Top (for Gas Models ONLY)
7	330086***	1	AD-15 "Plain" Bottom Back Guard (for models mfd. prior to August 28, 1995)
	314512	1	AD-25 "Plain" Bottom Back Guard (for models mfd. as of August 10, 1995)
	314412	1	AD-25 "Lettered" Bottom Back Guard (for models mfd. prior to August 10, 1995)
8	150301	13	#8-18 x 7/16" Phillips Pan Head TEK Screw
9	103500	4	Leveling Leg

* There is no Top Back Guard on Gas Heat Reclaimer Models and Steam Models.

** There is no Outer Top on Gas Heat Reclaimer Models and Steam Models.

*** Prior to August 28, 1995, dryer was manufactured with "Lettered" Back Guard.



<u>Illus. No.</u>	<u>Part No.</u>	<u>Qty.</u>	<u>Description</u>
1*	143513	1	ADG-15DH 6" x 6" x 5" Tee
	143501	1	ADG-25DH 8" x 6" x 6" Tee
2	880502	1	6" Replacement Damper Assembly
3	143514	1	ADG-15DH 5" Flexible Duct
	143509	1	ADG-25DH 6" Flexible Duct
--	117505	2	Aluminum Duct Tape (sold in feet)

* Damper Assembly must be purchased separately.

NOTE: Coin Acceptors Listed Include Optical Switch (ADC Part No. 137056)

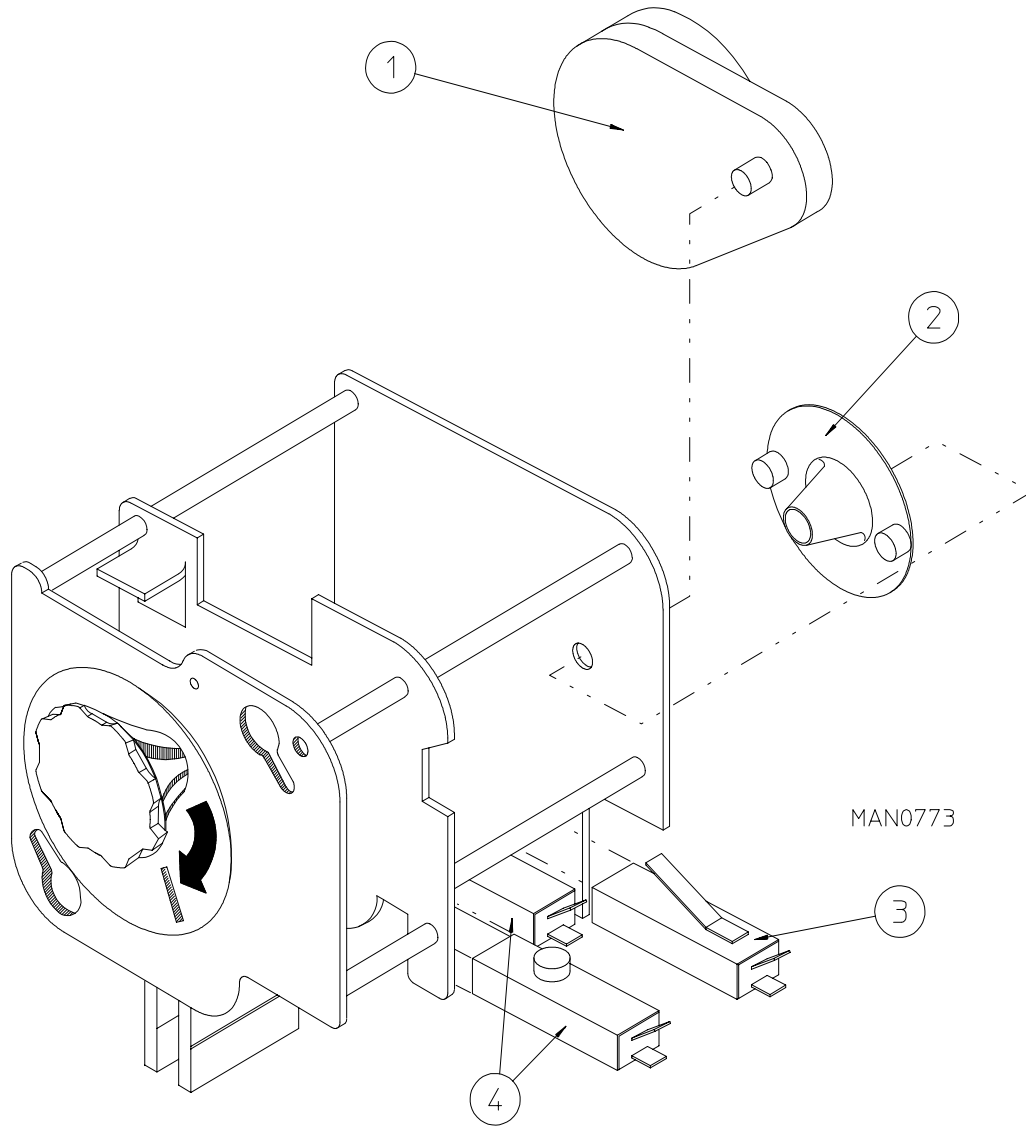
Single Coin*

ADC Part No.	Nation	Description
125100	U.S. and Canada	.25¢ Optic Coin Acceptor
125127	Canada	1.00 Canadian Optic Coin Acceptor
125101	United Kingdom	10 New Pence Optic Coin Acceptor
125114	United Kingdom	20 New Pence Optic Coin Acceptor
125115	United Kingdom	1 Pound Optic Coin Acceptor
125106	France	1 French Franc Optic Coin Acceptor
125120	France	2 French Franc Optic Coin Acceptor
125124	France	5 French Franc Optic Coin Acceptor
125109	Denmark	1 Danish Krone Optic Coin Acceptor
125125	Netherlands	.25¢ Guilder Optic Coin Acceptor
125108	Australia	.10¢ Australian Optic Coin Acceptor
125107	Australia	.20¢ Australian Optic Coin Acceptor
125130	Australia	1.00 Australian Optic Coin Acceptor
125123	New Zealand	.50¢ New Zealand Optic Coin Acceptor
125104	Japan	100 Yen Optic Coin Acceptor
125103	---	.882 Token Optic Coin Acceptor
125121	---	.800 Token Optic Coin Acceptor
125129	---	Muller Token Optic Coin Acceptor
125132	Singapore	.50¢ Singapore Optic Coin Acceptor
125133	Hong Kong	1.00 Hong Kong Optic Coin Acceptor

Dual Coin*

122116	U.S. and Canada	.10¢ / .25¢ Dual Optic Coin Acceptor
125128	Canada	.25¢ / 1.00 Dual Optic Coin Acceptor
125112	United Kingdom	10 / 20 Pence Dual Optic Coin Acceptor
125110	United Kingdom	10 / 50 Pence Dual Optic Coin Acceptor
125111	United Kingdom	20 / 50 Pence Dual Optic Coin Acceptor
125113	United Kingdom	1 Pound / 20 Pence Dual Optic Coin Acceptor
125122	France	2 / 5 Franc Dual Optic Coin Acceptor
125117	Denmark	1 / 5 Danish Krone Dual Optic Coin Acceptor
125131	Denmark	5 / 10 Danish Krone Dual Optic Coin Acceptor
125126	Netherlands	.25¢ / 1 Guilder Dual Optic Coin Acceptor
125118	Singapore	.20¢ / .50¢ Singapore Dual Optic Coin Acceptor
125105	Japan	50 / 100 Yen Dual Optic Coin Acceptor

* Consult Factory for Coin Acceptors Not Listed



<u>Illus. No.</u>	<u>Part No.</u>	<u>Qty.</u>	<u>Description</u>
1	125541	1	1/60 RPM 24 VAC / 60 Hz Meter Motor
	125540	1	1/30 RPM 24 VAC / 50 Hz Meter Motor
2	125500	1	2-Point Cam
	125501	1	3-Point Cam
	125502	1	4-Point Cam
	125503	1	5-Point Cam
	125504	1	6-Point Cam
	125506	1	8-Point Cam
	125507	1	9-Point Cam
	125508	1	10-Point Cam
	125510	1	12-Point Cam
	3	125515	1
4	125516	2	Meter Switch "A" or "C"

AD-15 and AD-25

Heat	Voltage	Wire Service	Step Down Transformer Part. No.	Control Volta Part No.
GAS / STEAM	208-240	3 or 4	-----	141403
	380	3	132059	141403
	380	4	132059	141403
	416	3	132062	141403
	416	4	132062	141403
	460/480	3	132053	141403
	460/480	4	132053	141403
	575	3	132050	141403

ADE-15	Kw	Volt	Phase	Wire	Step Down Transformer Part No.	Control Voltage Transformer Part No.
	30	208	3Ø	3 or 4	-----	132070
	30	230	3Ø	3	-----	132070
	30	416	3Ø	3 or 4	132062	141403
	30	460/480	3Ø	3 or 4	132053	141403
	25	380	3Ø	3 or 4	132059	141403
	24	208	3Ø	3 or 4	-----	132070
	24	230	3Ø	3	-----	132070
	24	416	3Ø	3 or 4	132062	141403
	24	460/480	3Ø	3 or 4	132053	141403
	20	208	1Ø	2	-----	132070
	20	230	1Ø	2	-----	132070
	20	380	3Ø	3 or 4	132059	141403
	15	208	3Ø	3 or 4	-----	141403
	15	230	3Ø	3	-----	141403

ADE-25	Kw	Volt	Phase	Wire	Step Down Transformer Part No.	Control Voltage Transformer Part No.
	30	208	3Ø	3 or 4	-----	132070
	30	230	3Ø	3	-----	132070
	30	416	3Ø	3 or 4	132062	141403
	30	460/480	3Ø	3 or 4	132053	141403
	25	380	3Ø	3 or 4	132059	141403
	24	208	3Ø	3 or 4	-----	132070
	24	230	3Ø	3	-----	132070
	24	416	3Ø	3 or 4	132062	141403
	24	460/480	3Ø	3 or 4	132053	141403
	20	208	1Ø	2	-----	132070
	20	230	1Ø	2	-----	132070
	20	380	3Ø	3 or 4	132059	141403

AD-15

Kw	Voltage	Phase	Wire	Oven Assembly*	Element			Oven Wire			Terminal Lug		Bus Bar P/N 12101	Oven Relay		Relay Coil Part No.
					Qty	Kw	Part No.	Qty	Size	Part No.	Qty	Part No.		Cat. No.	Part No.	
18	460/480	3Ø	3 or 4	824950	6	3	120007	4	#10	133300	6	121010	2	BEAJ	131350	131356
18	416	3Ø	3 or 4	824944	6	3	120006	4	#10	133300	6	121010	2	BEAJ	131350	131356
18	240	3Ø	3	824931	6	3	120007	3	#8	133100	4	121010	2	DPA43	131357	N/A
18	240	1Ø	2	824925	6	3	120007	2	#4	133300	2	121012	2	DPA63	131369	N/A
18	208	3Ø	3 or 4	824814	6	3	120006	3	#6	133200	4	121010	2	DEAJ	131365	131371
18	208	1Ø	2	824903	6	3	120006	2	#4	133300	2	121012	2	FEAJ	131375	131386
15	380	3Ø	3 or 4	824937	6	3	120006	4	#10	133000	6	121010	2	BEAJ	131350	131356
15	240	1Ø	2	824924	5	3	120007	2	#6	133200	3	121010	1	DPA63	131369	N/A
15	208	1Ø	2	824902	5	3	120006	2	#4	133300	2	121012	1	DPA63	131369	N/A
12	240	3Ø	3	824929	3	4	120009	3	#10	133000	4	121010	2	BEAJ	131350	131356
12	240	1Ø	2	824923	4	3	120007	2	#6	133200	3	121010	1	DEAJ	131365	131371
12	208	3Ø	3 or 4	824912	3	4	120008	3	#8	133100	4	121010	1	BEAJ	131350	131356
12	208	1Ø	2	824901	4	3	120006	2	#6	133200	3	121010	1	DEAJ	131365	131371
11	400	3Ø	4	881606	6	2	120004	5	#10	133000	4	121010	1	BFAJ	131351	131805

AD-25

Kw	Voltage	Phase	Wire	Oven Assembly*	Element			Oven Wire			Terminal Lug		Bus Bar P/N 12101	Oven Relay		Relay Coil Part No.
					Qty	Kw	Part No.	Qty	Size	Part No.	Qty	Part No.		Cat. No.	Part No.	
24	460/480	3Ø	3 or 4	824951	6	4	120009	4	#10	133000	6	121010	2	BEAJ	131350	131356
24	416	3Ø	3 or 4	824945	6	4	120008	4	#8	133100	6	121010	2	BEAJ	131350	131356
24	240	3Ø	3	824932	6	4	120009	3	#6	133200	3	121012	1	DEAJ	131365	131371
24	208	3Ø	3 or 4	824915	6	4	120008	3	#4	133300	4	121012	1	DPA63	131369	N/A
20	380	3Ø	3 or 4	824938	6	4	120008	4	#10	133000	6	121010	2	BEAJ	131350	131356
20	240	1Ø	2	824927	5	4	120009	2	#4	133300	2	121012	2	FEAJ	131375	131386
20	208	1Ø	2	824905	5	4	120008	2	#4	133300	2	121012	2	GEAJ	131385	131386
18	460/480	3Ø	3 or 4	824950	6	3	120007	4	#10	133000	6	121010	2	BEAJ	131350	131356
18	416	3Ø	3 or 4	824944	6	3	120006	4	#10	133000	6	121010	2	BEAJ	131350	131356
18	240	3Ø	3	824931	6	3	120007	3	#8	133100	4	121010	2	DPA43	131357	N/A
18	240	1Ø	2	824925	6	3	120007	2	#4	133300	2	121012	2	DPA63	131369	N/A
18	208	3Ø	3 or 4	824914	6	3	120006	3	#6	133200	4	121010	2	DEAJ	131365	131371
18	208	1Ø	2	824903	6	3	120006	2	#4	133300	2	121012	2	FEAJ	131375	131386
15	380	3Ø	3 or 4	824937	6	3	120006	4	#10	133000	6	121010	2	BEAJ	131350	131356

* Oven Assemblies do not include Oven Relay (contactor) and Harnesses. These items must be ordered separately. When ordering Oven Assembly Complete, specify 3 or 4 wire when applicable as well as if dryer has Microprocessor controls or Non-Microprocessor controls.

N/A = Not Available

DSI Burner Orifice Listing*

Model No.	Heat Reclaime	Qty.	Natural GAS		L.P. Gas	
			D.M.S.	Part No.	D.M.S.	Part No.
ADG-15D	No	2	#42	1408	#54	1408
ADG-15D	Yes	2	#43	1408	#54	1408
ADG-25D	No	2	#32	1408	#50	1408
ADG-25D	Yes	2	#34	1408	#51	1408

* Consult Factory For Elevations Over 2,000 Feet

DSI Burner Assembly Listing

Model No.	Btu/Hr Rating	Heat Reclaimer	Natural GAS Part No.	L.P. Gas Part No.
ADG-15D	50,000	No	809640	809641
ADG-15DH	47,000	Yes	809642	809643
ADG-25D	78,000	No	809640	809641
ADG-25DH	70,000	Yes	809638	809639

Notes: 1. Burner assemblies DO NOT include burner orifices. They must be ordered separately.
2. When ordering burner assemblies, specify model number and if computer or non-computer controls.

DSI L.P. Conversion Kit Listing*

Model No.	Kit Part No.
ADG-15D	874051
ADG-15DH	874051
ADG-25D	874052
ADG-25DH	874052

* Consult Factory For Elevations Over 2,000 Feet.

<u>Part No.</u>	<u>Description</u>
112027	“Water Washed Fabrics” Label
112039	“Black/White/Green Ground” Label
112040	“Lint Compartment” Label
112041	“Caution-Exhausted” Label
112531	“Phase 5 OPL Program Location Summary” Label
120100	3/8” Straight (BX) Connector
120200	3/8” x 90° (BX) Connector
120300	3/8” x 45° (BX) Connector
120400	3/8” Red Jacket (BX) Insulator
120500	3/8” Jiffy Clip (BX Retainer Clip)
120600	3/8” Greenfield (BX)
120707	Terminal Strip (2-position)
120708	Terminal Strip (3-position)
120800	1/4” In-Line Connector
120902	#74B Wire Nut
120903	Crimp-on Wire Nut
121006	#10 Insulated Ring Terminal
121014	1/4” Insulated (female) Terminal
121026	Tab Receptacle Combination
121499	4” Harness Tie
121500	7” Harness Tie
121503	Harness Tie Mounting Clip
112804	Manometer (Hydro Gauge) for measuring Gas Pressure
410001	1/2” Allen Wrench
880200	Electrical Terminal Kit

ADC 450104 **1-** 02/23/93-100 **2*** 04/20/93-100 **3*** 07/19/93-100
4- 01/05/94-100 **5*** 04/10/95-100 **6*** 02/08/96-100
7* 05/16/96-100 **8*** 06/17/97-100

Telephone: (508) 678-9010



Fax: (508) 678-9447